

---

**Honeywell**

# **PlantScape Controller Implementation**

## **Lesson 1**

### **Navigating Knowledge Builder**

---

1 - 3

---

#### **Notes**

##### **Introduction**

The purpose of this Lesson is to give you the information to be able to navigate Knowledge Builder. After you complete this Lesson you should be able to identify the procedures to navigate Knowledge Builder.

##### **Objectives**

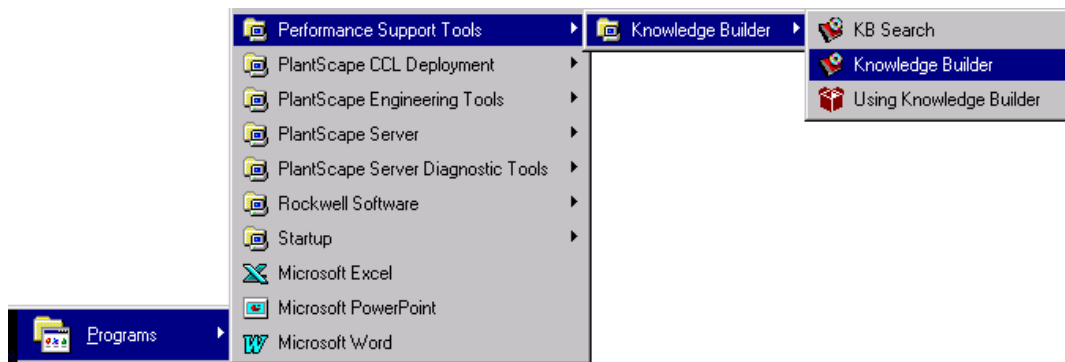
- ❶ Given a list of statements, correctly identify the methods of accessing Knowledge Builder
- ❷ Given a list of definitions, correctly identify the definitions of Knowledge Builder Guide, Reference Manual and Theory Manual

**Honeywell**

## **Starting Knowledge Builder**

### **From the Windows NT Taskbar**

- Click:
  - **Start**
    - **Programs**
      - **Performance Support Tools**
        - **Knowledge Builder**
          - **Knowledge Builder**



1 - 4

## **Notes**

### **Starting Up Knowledge Builder**

You can start up the PlantScape Knowledge Builder from Windows using

- Windows NT Taskbar menus

Additionally, once Control Builder and the Station application are running, you may access the Knowledge Builder from

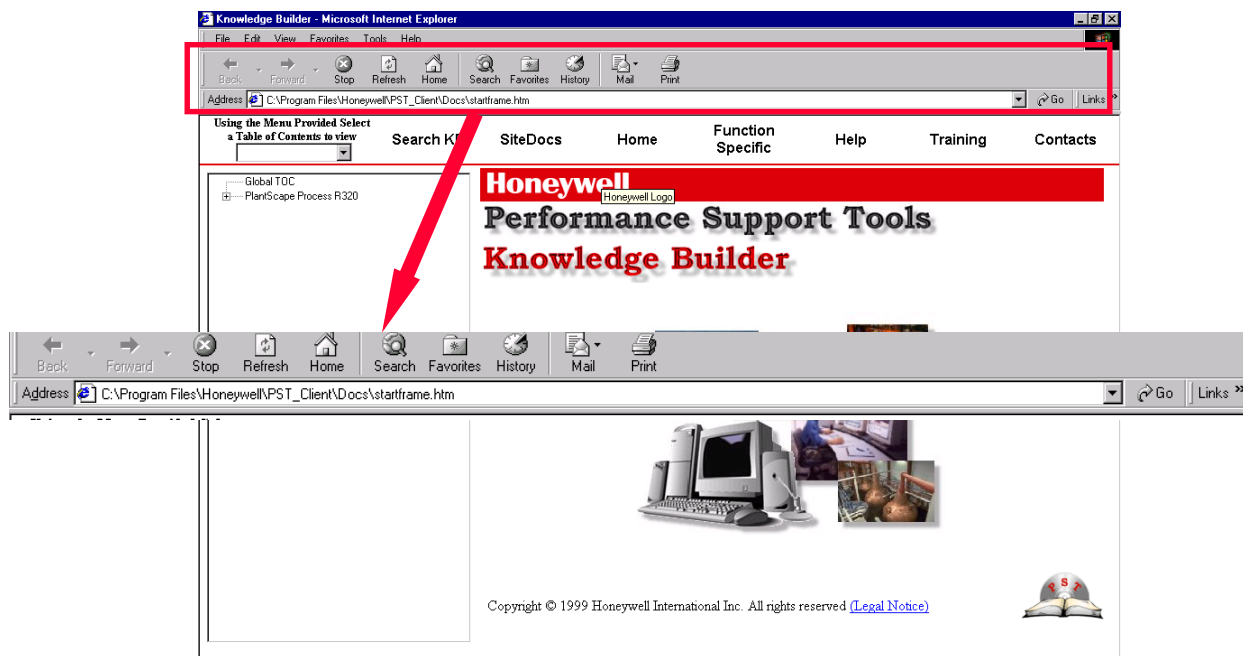
- the pull-down help menus (Help -> Knowledge Builder)
- online help displays via buttons (F1, Help) or hyper-text links (Control Builder only)

## Honeywell

### Using the Main Menu

#### ➤ Browser window

- unique to your browser and includes generic browser functions



1 - 5

### Notes

The Main Menu gives you a graphical easy-to-navigate interface for accessing PlantScape information. The Main Menu consists of two windows

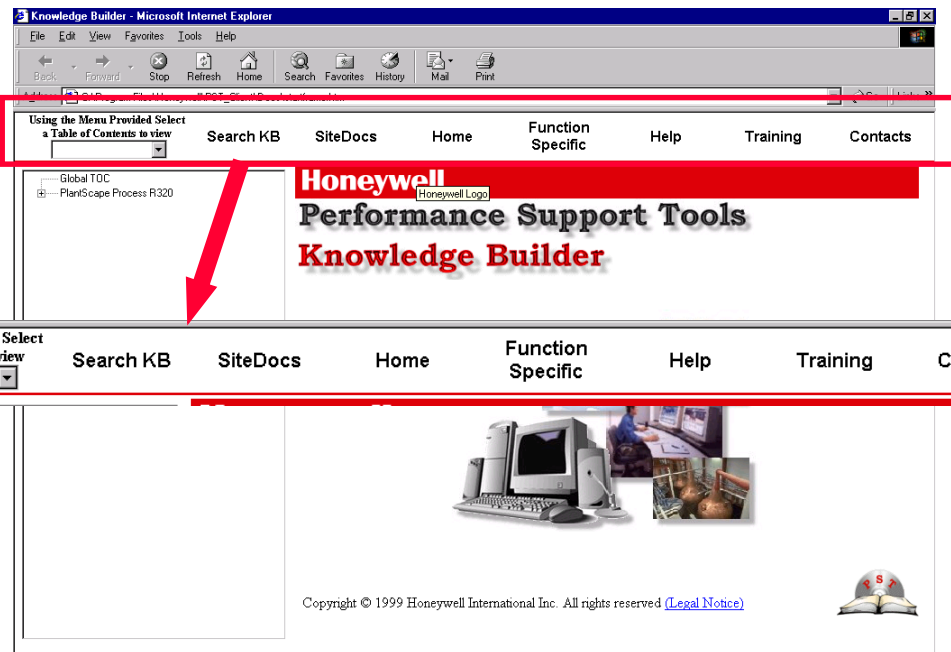
- Browser Window
- Standard Targets Window



## Using the Main Menu

### ➤ Standard Targets window

- always visible, this window provides access to KB specific navigation tools



1 - 6

## Notes



## Using the Standard Targets

### Standard Target

### Function

- Search KB** - opens the Knowledge Builder search function, which allows users to search for key words throughout the online documents and Site Docs.
- SiteDocs** - a purchasable feature of Knowledge Builder that allows users to access and view their own files through the Knowledge Builder browser. SiteDocs also allows for Administrative controls including the monitoring of Users' history. A limited version of SiteDocs is provided with Knowledge Builder for evaluation purposes.
- Home** - opens the main page of Knowledge Builder, giving the user access to the online documents grouped by job function, as well as access to the Feedback system.



1 - 7

## Notes

---

---

---

---

---

---

---

---

---

---



## Function

- takes you to the Function Block Home Page, which is designed to provide a single source for PlantScape Function Block configuration. This page provides the user with everything from Theory to Examples.

- opens the online documentation about Knowledge Builder's functions and features.

- provides access to Skill Builder as well as to online training components that may be ordered through Honeywell.

- lists the sales and service telephone numbers of regional Honeywell offices in the United States and Canada.

1 - 8

## Notes

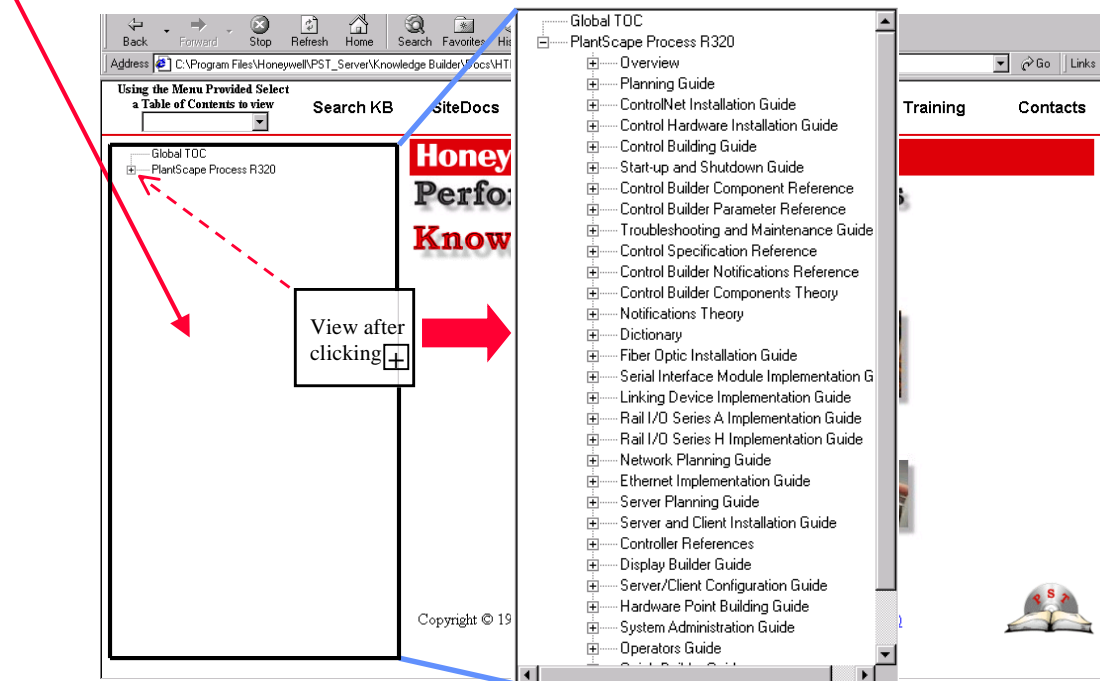
[illegible]



## KB Screen Layout

### ➤ Tree Window

- displays the documents to select from for information. Global Table of Contents is the default choice.



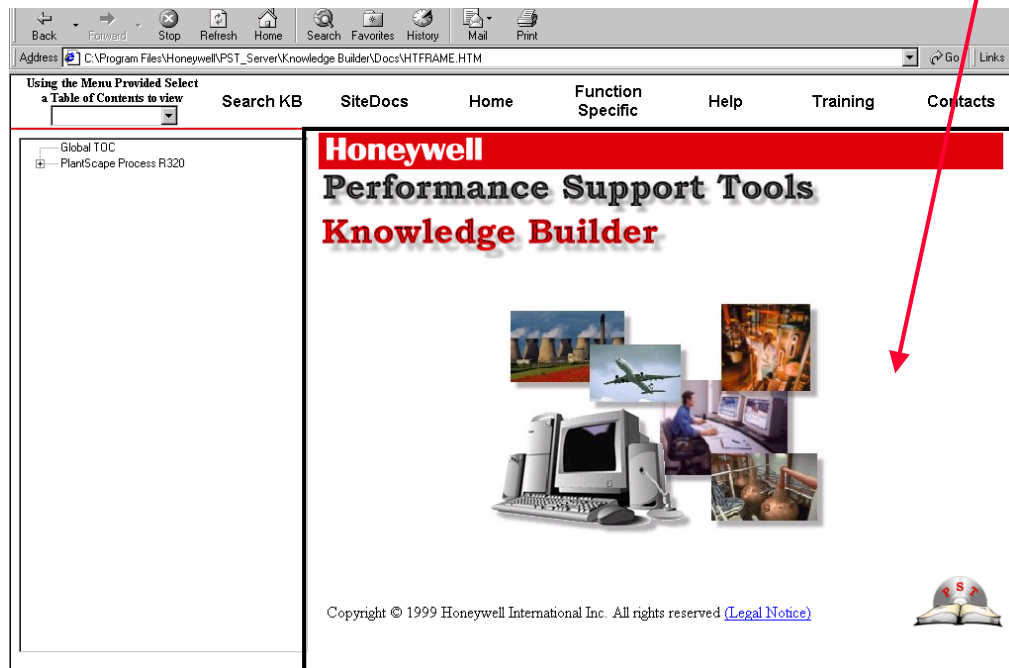
1 - 9

## Notes

## Honeywell

➤ **Information window**

- displays all Knowledge Builder information



1 - 10

## Notes

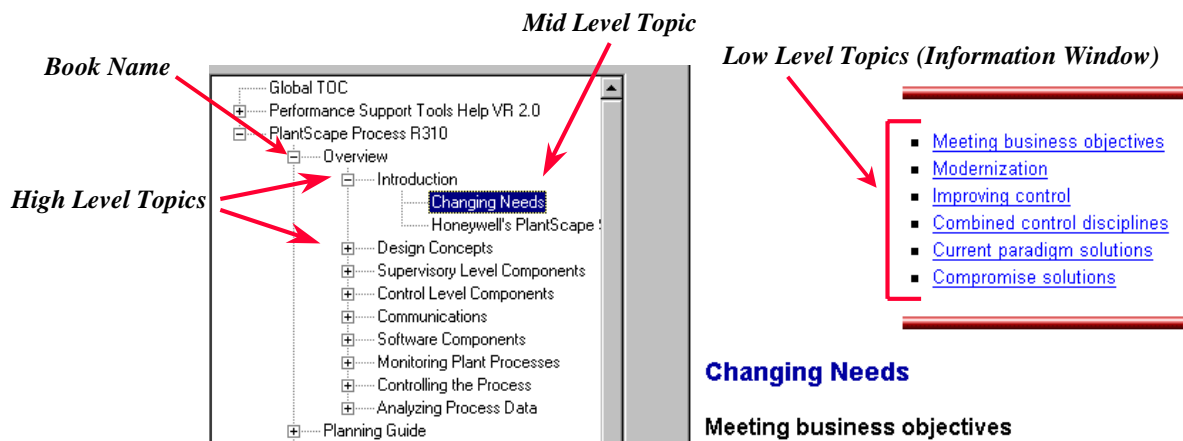




## Accessing Information

### ➤ Global Table of Contents

- The Global Table of Contents contains a tree view list of all available information components.



1 - 11

## Notes



## Navigating within an Information Component

➤ Global Table of Contents . . . *continued*

Topic Level	Definition and Functionality
High-Level Topics	<b>High Level Topics</b> include the document's name and its first heading level. High-level topics are not selectable and serve only to structure mid- and lower-level topics in the table of contents.
Mid-Level Topics	A <b>Mid-Level Topic</b> is the second heading level within a document. A separate page exists in Knowledge Builder for each mid-level topic. This page may contain multiple lower-level topics. A mid-level topic is selectable from the tree-view table of contents by clicking that topic with the mouse.
Low-Level Topics	A <b>Low-Level Topic</b> is the heading list at the top of each Knowledge Builder page. The list contains hyperlinks which, when clicked, take you to the heading's location on that page.

1 - 12

### Notes

---

---

---

---

---

---

---

---

---

---

## Honeywell

### ➤ Accessing Information from a hyperlink

- Activating a hyperlink from within an information component

#### Step

#### Action

1

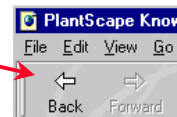
Click the hyperlink in the information component.

Underlined Blue Text

“See the [PlantScape System Administration Guide](#) for details on establishing groups and adding user accounts.”

2

To return to the original topic, click the Back icon in the browser toolbar at the top of the screen.



1 - 13

## Notes

---

---

---

---

---

---

---

---

---

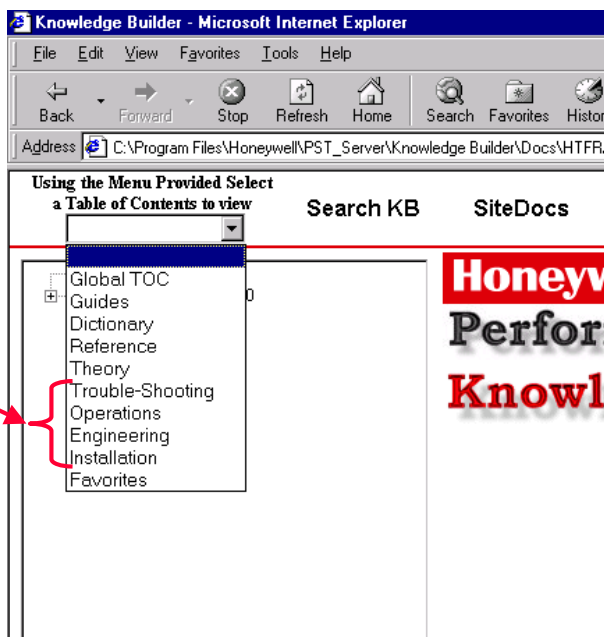
---



## Accessing Information Through Menu

### ➤ Accessing by Job Function

- Trouble Shooting
- Operations
- Engineering
- Installation



1 - 14

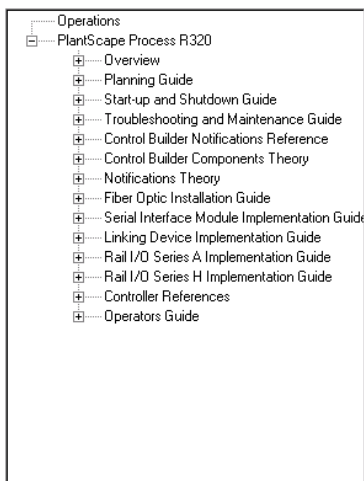
## Notes



➤ Accessing by Job Function . . . *continued*

• **Example 1**

- Clicking on **Operations** will display an associated list of information components



## Operations

This category is designed with the intent of providing grouped information for use by system Operators. The Operations category has a complete listing of all documents contained within Knowledge Builder, that contain operator related information. This can be everything from software operation to the operation of specific hardware.

When to use this Category:

- When questions arise during operation (How do I resolve an alarm?)
- For specific operator tasks (Configuring a Trend)

1 - 15

## Notes

---

---

---

---

---

---

---

---

---

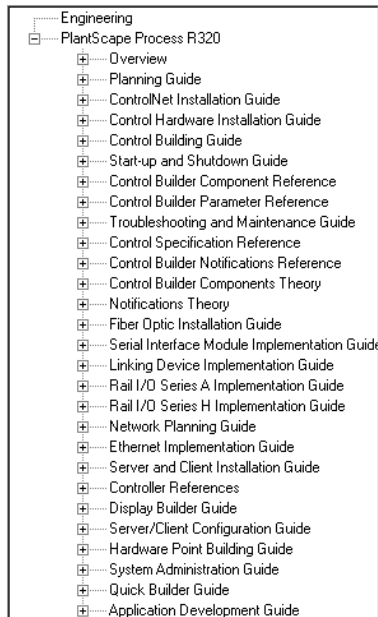
---



➤ Accessing by Job Function . . . *continued*

• **Example 2**

- Clicking on the **Engineering** Button will display a different list of information components based on the needs of this job function



## Engineering

This category is designed with the intent of providing grouped information for Engineering related tasks. The Engineering category has a complete listing of all documents that an Engineer would use to implement and configure a system.

When to use this Category:

- When planning to implement new features in you existing system
- When designing a new system architecture

1 - 16

## Notes

## Honeywell

➤ **Accessing by Information Type**

- Information components are grouped according to the following information types

Information Type	Definition	Examples
<b>Guides</b>	“How to” procedures	<ul style="list-style-type: none"><li>• <i>Control Building Guide</i></li><li>• <i>ControlNet Installation Guide</i></li></ul>
<b>Reference</b>	“Look Up Data” not normally read cover to cover	<ul style="list-style-type: none"><li>• <i>Control Builder Parameter Reference</i></li><li>• <i>Control Specifications Reference</i></li></ul>
<b>Theory</b>	“How it works” theory of operation	<ul style="list-style-type: none"><li>• <i>Control Builder Components Theory</i></li><li>• <i>Notifications Theory</i></li></ul>

1 - 17

### Notes

---

---

---

---

---

---

---

---

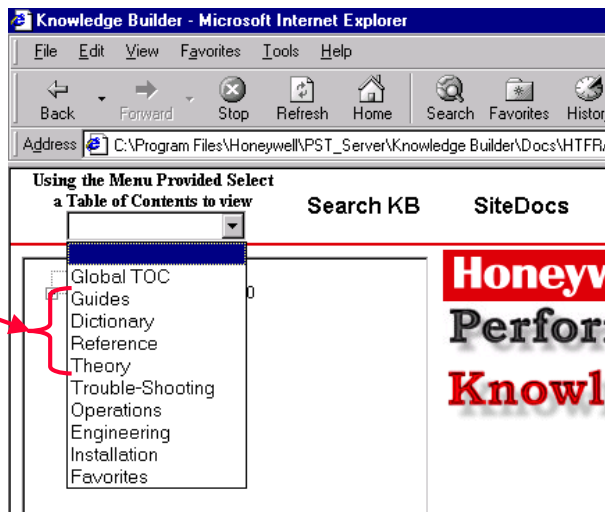
---

---



➤ Accessing by Information Type

- Guides
- Reference
- Theory



- Note: Dictionary takes you to the dictionary for acronyms and definitions

1 - 18

**Notes**

---

---

---

---

---

---

---

---

---

---

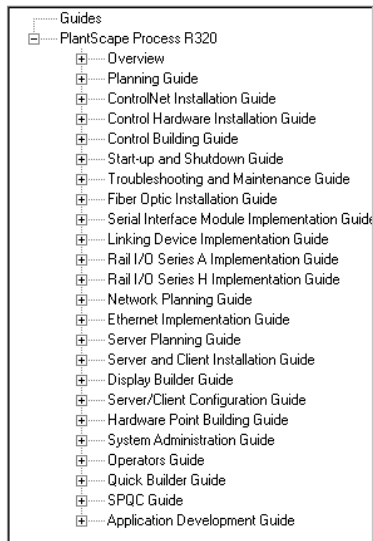




➤ Accessing by Information Type . . . continued

- **Example**

- Clicking on **Guides** will display a selection list of all Guide-type books



## Guides

The Guides Table of Contents contains documents that can assist a user by guiding them through specific tasks.

1 - 19

## Notes

---

---

---

---

---

---

---

---

---

---

**Honeywell**

## Searching Knowledge Builder

### ➤ Search Function from Knowledge Builder

- From Knowledge Builder, click the **Search KB** toolbar target. The Knowledge Builder Search user interface appears:

Using the Menu Provided Select a Table of Contents to view

Search KB SiteDocs Home

Enter Search Word

SEARCH

Available Search Words

\$\$1001  
\$\$PR11  
\$0001  
\$0026  
\$123

CANCEL

Help

☐ Match Case  
☐ Words in Any Order  
☐ Find Whole Words Only

Percent Complete

Using DB version Process R320 dated 7/19/00

- [Accessing the Search Function](#)
- [Using Knowledge Builder Search](#)
- [Knowledge Builder Search Tips](#)

**Searching Knowledge Builder**

Accessing the Search Function

1 - 20

## Notes

**Honeywell**

## **Searching the PlantScape Knowledge Builder ...continued**

### **➤ Search Function from Windows NT Taskbar**

- The Knowledge Builder help user interface can also be accessed by way of the PlantScape Performance Support Tools menu



1 - 21

## **Notes**

### **Search Function from Windows NT Taskbar**

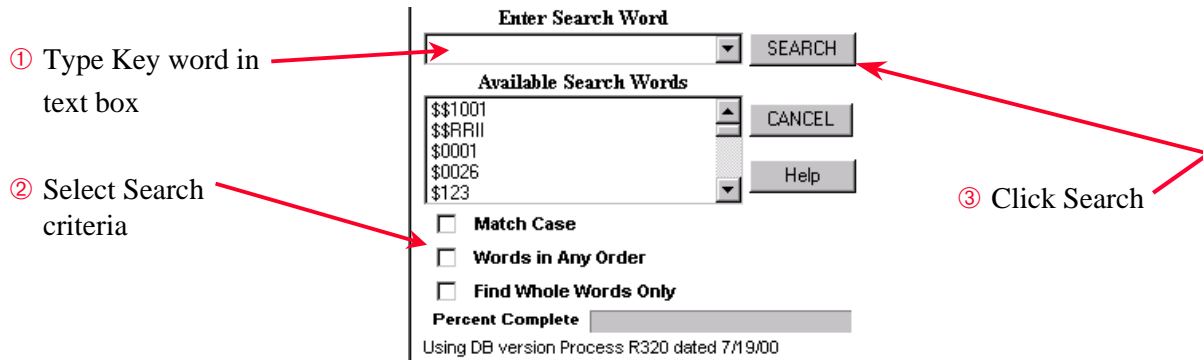
From the Start Menu click

Start -> Programs -> Performance Support Tools -> Knowledge Builder -> KB Search

**Honeywell**

## Searching the PlantScape Knowledge Builder ...continued

### ➤ Using the Knowledge Builder Search User Interface



- The result is a tree view selection list of all references to the search key word

1 - 22

## Notes

### Step

### Action

- 1 Type in text you wish to search for or select (double-click) keyword(s) from the list (Can be up to three individual words)
- 2 Select search criteria  
**Match Case** - locates matches with same case (upper or lower case) as entered text.  
**Words in Any Order** - locates words in any order within a low level topic. For example, if you search for system security using this criteria, search results will include matches such as “system level security” and “security of the system”.  
**Find Whole Words Only** - locates whole word matches of entered text (that is, matches that are not part of another word).
- 3 Click Search. Matches will display in the Knowledge Builder Global Access Window sorted by document.
- 4 Click a topic in the match list to display in the main browser window.

**Honeywell**

## Searching the PlantScape Knowledge Builder ...continued

### ➤ Using the Knowledge Builder Search User Interface

- Click a topic as desired.
- The selected topic displays in the information window.
- The word or phrase searched for will appear in red

The screenshot displays the Knowledge Builder search interface. On the left, the 'Enter Search Word' field contains 'control algorithm'. Below it, the 'Available Search Words' list includes 'control-cabinet', 'controlHDs', 'Control-processor', 'Control-related', and 'Control-Sequential'. The 'Control-Sequential' option is selected. Search criteria are set to 'Match Case', 'Words in Any Order', and 'Find Whole Words Only'. The 'Percent Complete' bar is at 100%. The search results list shows 'PlantScape Process R320' with 13 hits. The 'PULSECOUNT Block' is highlighted in the results tree. On the right, the 'PULSECOUNT Block' information window is open, showing a list of links: Description, Function, Required inputs, Output, Initializable inputs and outputs, and PULSECOUNT parameters. The 'Description' link is selected, displaying the block's description. The description states that the PULSECOUNT block generates pulses according to its pulse count **control algorithm**. It also mentions that the pulsed outputs are usually fed to Digital Output Channel blocks. A diagram of the PULSECOUNT block is shown at the bottom right, with inputs for PULSETIME, LOCALMAN, and OFF, and outputs for PORAISE, POFLOWER, POFLOW, and POFF.

1 - 23

**Notes**

### Knowledge Builder Search Tips

1. For some searches the number of hits is so large that you need to refine the search using different search words or phrases, and using the search criteria choices.
2. The match results will always display the high level topic. Scroll through the topic to locate the specific matched item.
3. Always select Match Case and Find Whole Words Only when looking for instances of logical expression of function block names such as "AND".



## Printing Topics in the PlantScape Knowledge Builder

- Using the Browser Print button
  - Select the window you wish to print
  - Click the **Print** button.
- Using the File Print command
  - Select the window you wish to print
  - Click **File** -> **Print**
  - Select desired printing options.
  - Click **OK** in the Print window
- Using the right mouse button
  - Right-click in the window you wish to print
  - Click **Print**
  - Select the frame type you want to print  
(As laid out on screen, Only the selected frame, All frames individually)
  - Click the **OK** button

1 - 24

### Notes

---

---

---

---

---

---

---

---

---

---

**Honeywell**

---

**This completes....**

**PlantScape Controller Implementation**

**Lesson 1**

**Navigating Knowledge Builder**

1 - 25

**Notes**

---

---

---

---

---

---

---

---

---

---