

## **Lesson 4. Database Administration (DBAdmin)**

---

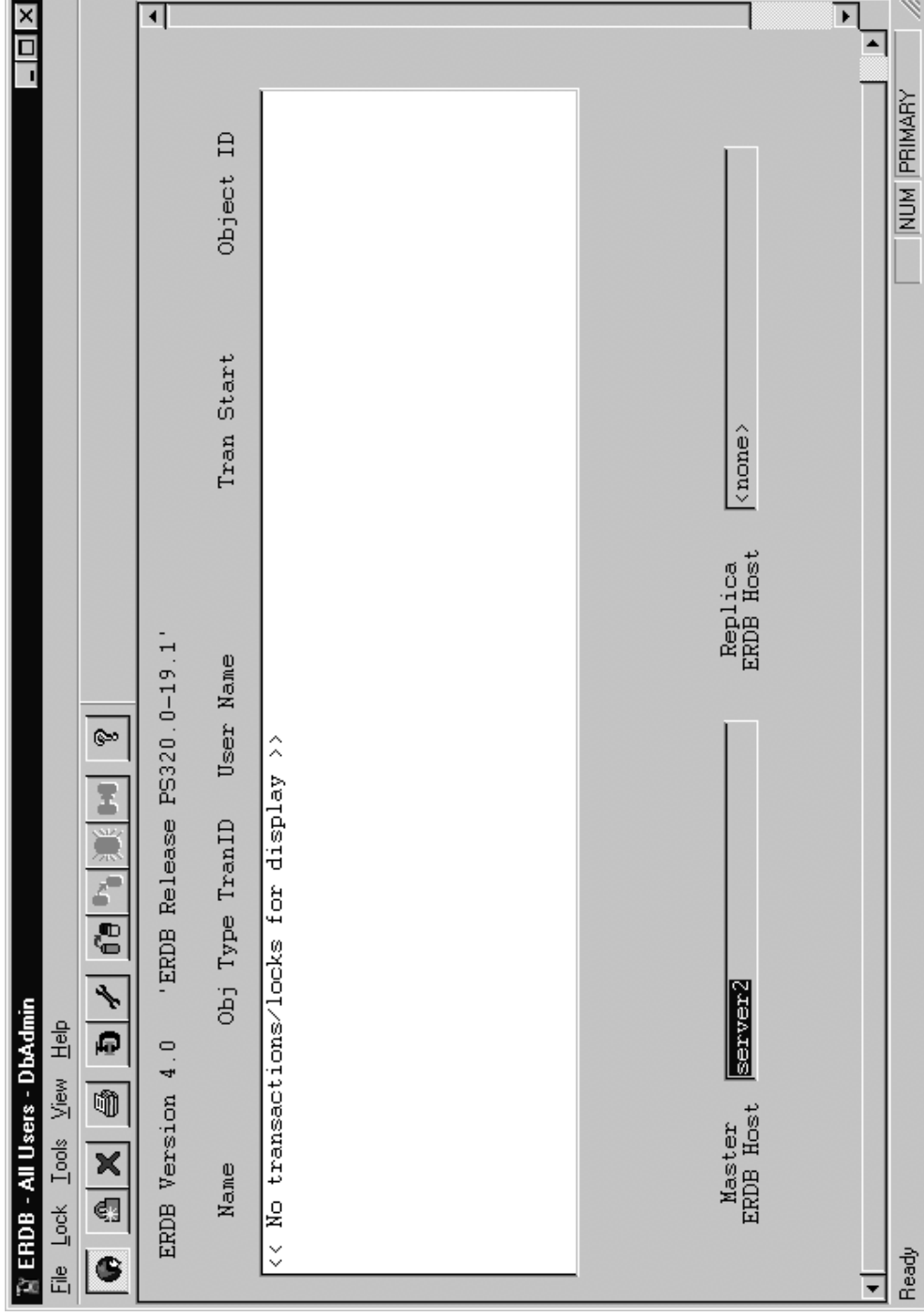
### **Objectives:**

- Understand the purpose and functions of DBAdmin

# DBAdmin Startup

---

*Programs → PlantScape Engineering Tools → DBADMIN*



# Toolbar Icons

---



**Refresh** - DbAdmin initially starts up with an empty display. To view the current lock status, select the Refresh button.



**All users** - The lock display normally defaults to displaying all locks that currently exist in the database. This may be fine if there is only one user working on the database. However, if multiple users are connected via Control Builder and you need to clear locks for only one session, use the User Filter feature.



**Clear Locks** - Clearing locks is necessary when a program using the ER database, such as Control Builder or Import/Export has terminated unexpectedly, leaving function blocks locked in the database.



**Print** - Prints current user, database name software revision information and any information that is presently in the Transaction Window.

# Toolbar Icons *continued*

---



**Compact** - The database should be compacted on a regular basis because it reorganizes the database with the data and tables in contiguous and sorted order. It also refreshes the statistics in the database and causes all stored queries to recompile. This reduces the size of the database and can significantly increase performance. If the ERDB is replicated, both copies should be compacted.



**Repair** - Database repair is used to recover a database that is left in an inconsistent state such as caused by a failure during the commit phase of a database transaction



**Convert Single Database to Replicable** - This function is used in situations where you need to convert an un-replicated database to a Design Master. For example, if you have a redundant system but wish to create a new database from the clean database copy, or move a database over from a non-redundant server.

# Toolbar Icons *continued*

---



**Make Replica** - Creating a new replica is needed in the following situations: The replica database was lost or became corrupted. The master database was replaced making the old replica out of date.



**Recover Design Master** - This function is used in the following situations: 1) Mastership is lost due to moving of the database files. The master stores its location and the ID of its replica in the database file. If the database file is moved, synchronization may not work if this information is incorrect.  
2) The Design Master has been lost or damaged and the user wishes to recover the Design Master from its Replica.

# Toolbar Icons *continued*

---



**Synchronize ERDB now** - This function sends a request to the ER Synchronization service to request a database synchronization to occur. This does not copy any database files but causes information to be transferred between database copies so that they are both up to date. Note that the service does not respond immediately so that there may be a slight delay before synchronization actually occurs.



**About** - Shows version information