

Unit 2 Exam

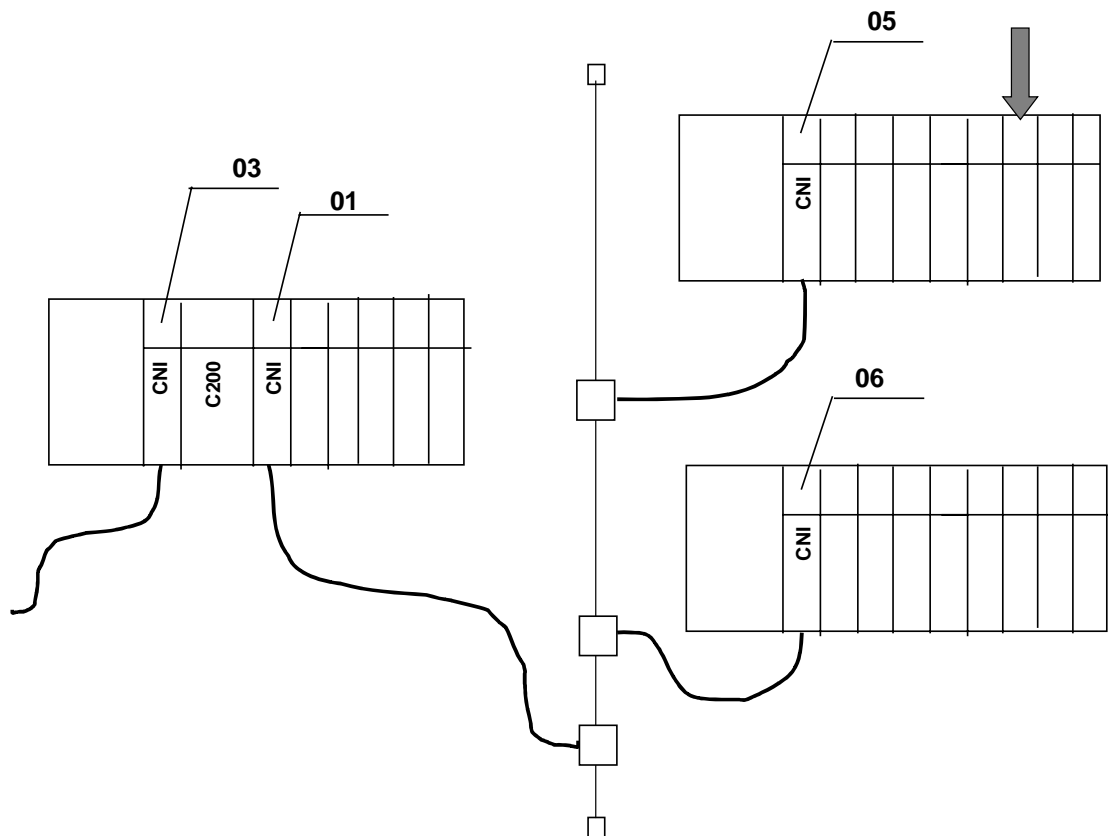
QuesNo	Question
1	<p>When a C200 controller is added to the Project tab, the name it is given by Control Builder is CPMxx. The xx is an index number used in controller operation and this name must not be changed.</p> <p>A True</p> <p>B False</p>
2	<p>When counting slots from left to right beginning with zero, the CPM counts as 2 slot locations.</p> <p>A True</p> <p>B False</p>
3	<p>The hybrid controller communicates with remote I/O racks through which of the following?</p> <p>A Ethernet</p> <p>B CNet using a PCIC card</p> <p>C CNet using the supervisory CNI module</p> <p>D CNet using an additional CNI(s) dedicated to remote I/O communication</p>

4 When an I/O module is added to the Project tab, the name it is given by Control Builder is IOMxx. The xx is an index number used in controller operation and this name must not be changed.

A True

B False

5 In the following diagram, what are the three numbers required to configure the slot location of the designated IOM.



IOM Slot Number _____

Uplink CNI MAC Address _____

Downlink CNI Slot Number _____