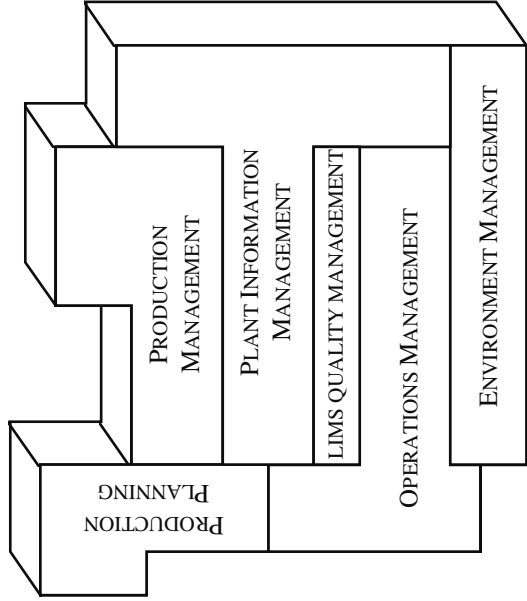
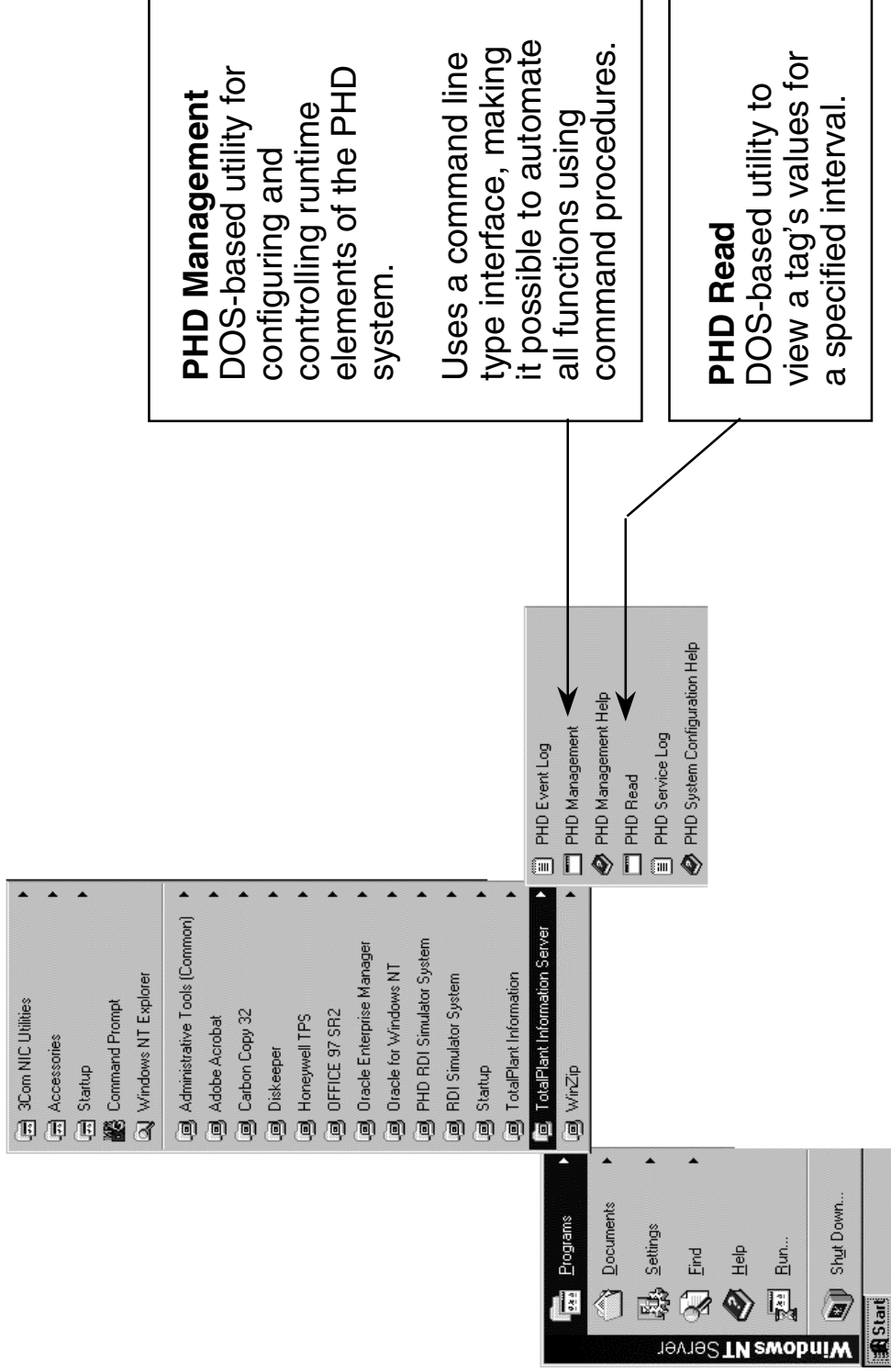


PHD Menu Overview



TotalPlant Information PHD Server

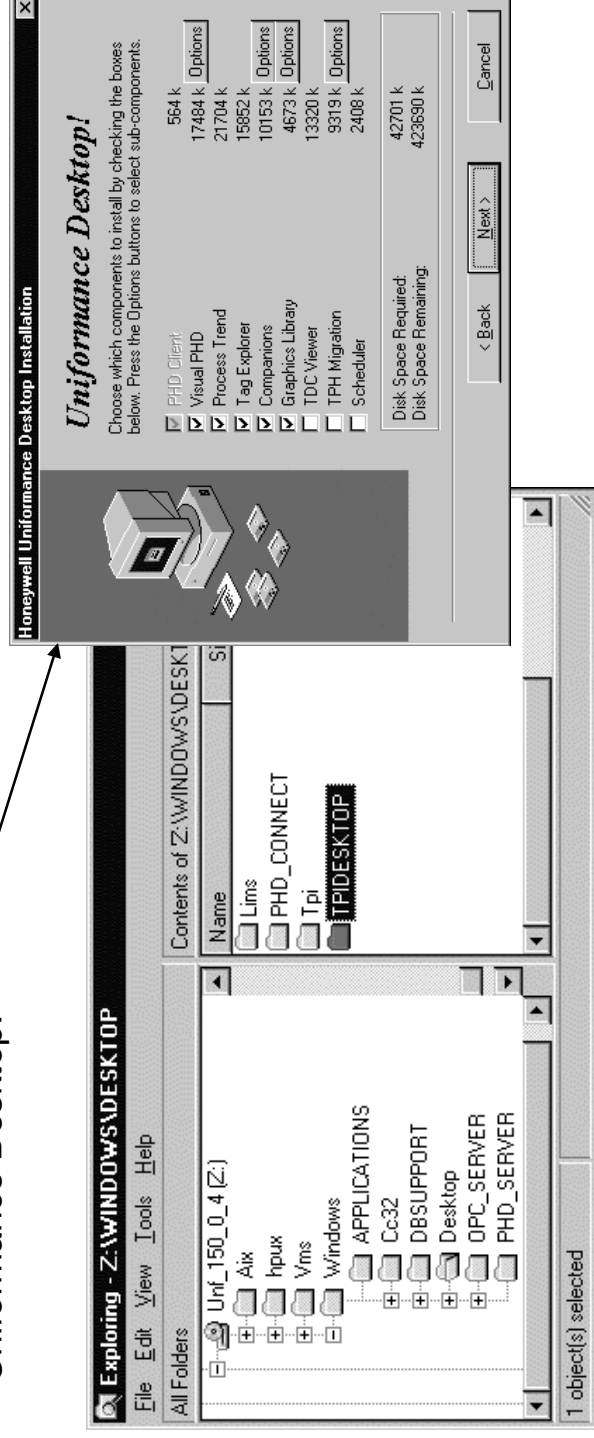


Uniformance Client

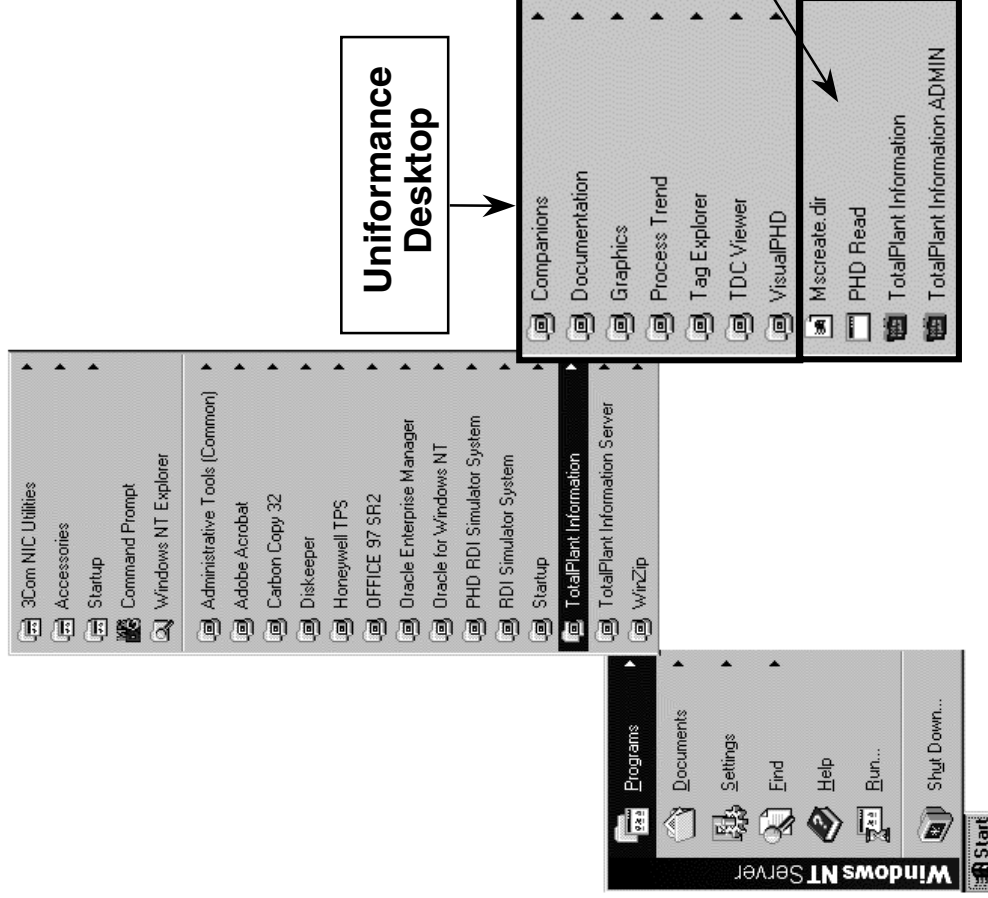
Installable Uniformance *client* components:

- **TPI** - Desktop\Tpi\Setup.exe
- **PHD Connect** (required prior to R150 only) - Desktop\PHD_CONNECT\Setup.exe
- **Uniformance Desktop** - Desktop\TPIDESKTOP\Setup.exe

Shown below is the setup screen listing the installable components for the Uniformance Desktop.



Uniformance Client, *continued*



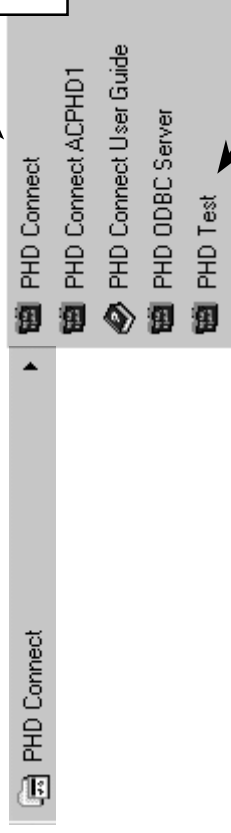
TPI
<p>TotalPlant Information Main Menu for all Uniformance applications, including PHD. Provides MS Access forms to do the following:</p> <ul style="list-style-type: none">- configure the reference database,- query the reference, event, and history databases,- demand standard reports of reference, history, and event data.- Security Configuration accessible by specific users
<p>TotalPlant Information ADMIN Database Administration and Security Configuration for all Uniformance applications, including PHD (Users, User Roles, Role Permissions, Menu Access).</p>

PHD Connect (<R150 only)

PHD Connect

An MS Windows application that links PC applications (including TPI) to the PHD server through windows DDE.

Required prior to R150 in order to update the PHD Server with changes to the Oracle reference database.



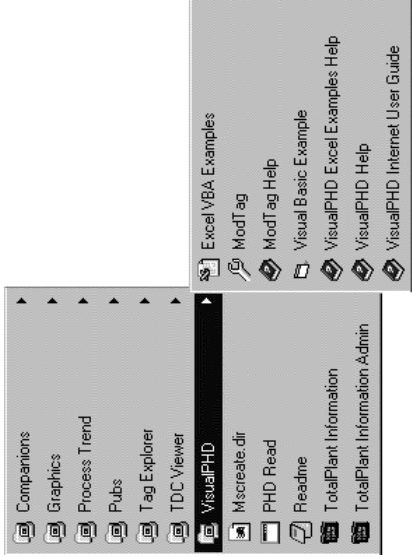
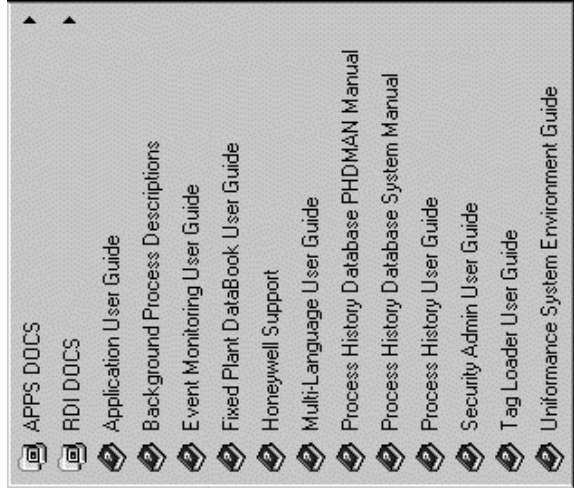
PHD Test

A Visual Basic application that displays tag data using DDE calls to PHD.

Can be used to test connectivity between Windows desktop applications and the PHD server.

Documentation Summary

Online documents are installed with TPI and with each Uniformance Desktop component, such as VisualPHD.



Documentation Summary, *continued*

Process History

PIM0201	PHD User Guide
PIM0221	PHDMAN User Manual
PIM0301	PHD System Manual
PIM0801	PHD Tagload User Manual
RDI2151	TPN/AXM (LXS) RDI Functional Specification
RDI2801	PlantScape RDI Functional Specification
RDI0501	CM50 RDI Functional Specification
RDI1001	Remote PHD RDI Functional Specification

Application and Security Management

AM0101	TPI Application User Guide
AM0601	Security Administration User Guide
PIM1001	Background Processing Descriptions User Guide
SM0401	System Environment User Guide

Installation

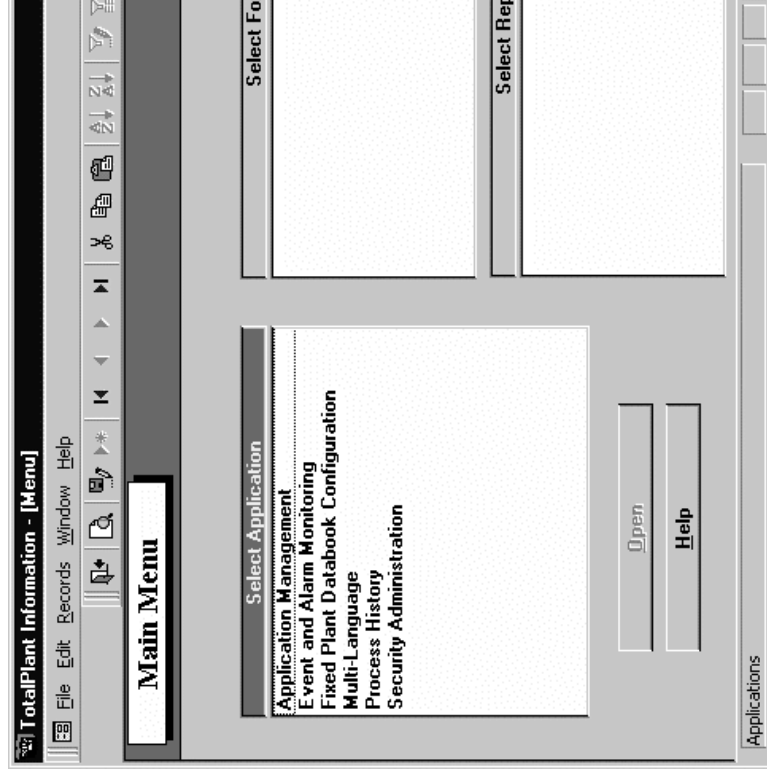
PH06130	Uniformance Client Installation Guide
---------	---------------------------------------

The Uniformance documentation CD contains documents (in PDF format) for all of the Uniformance and Business.Flex applications, including PHD.

The CD contains a *Document Summary Reference Guide* listing the titles and numbers of the documents.

This course references the documents listed at the left.

TPI Main Menu



Application Management

Used to customize menus for specific users, to schedule and route reports, and to configure background processes.

Fixed Plant (Common) DataBook

Defines data (processes, facilities, and operations of the plant) used to validate and control other Uniformance applications. Certain PHD functions require portions of the data book (lookup definitions, equipment definitions, report header definition).

Process History (PHD)

For configuration related to history collection, compression, and retrieval, including tags.

Security Administration

Used to configure user access to system (users, roles, permissions, menus).

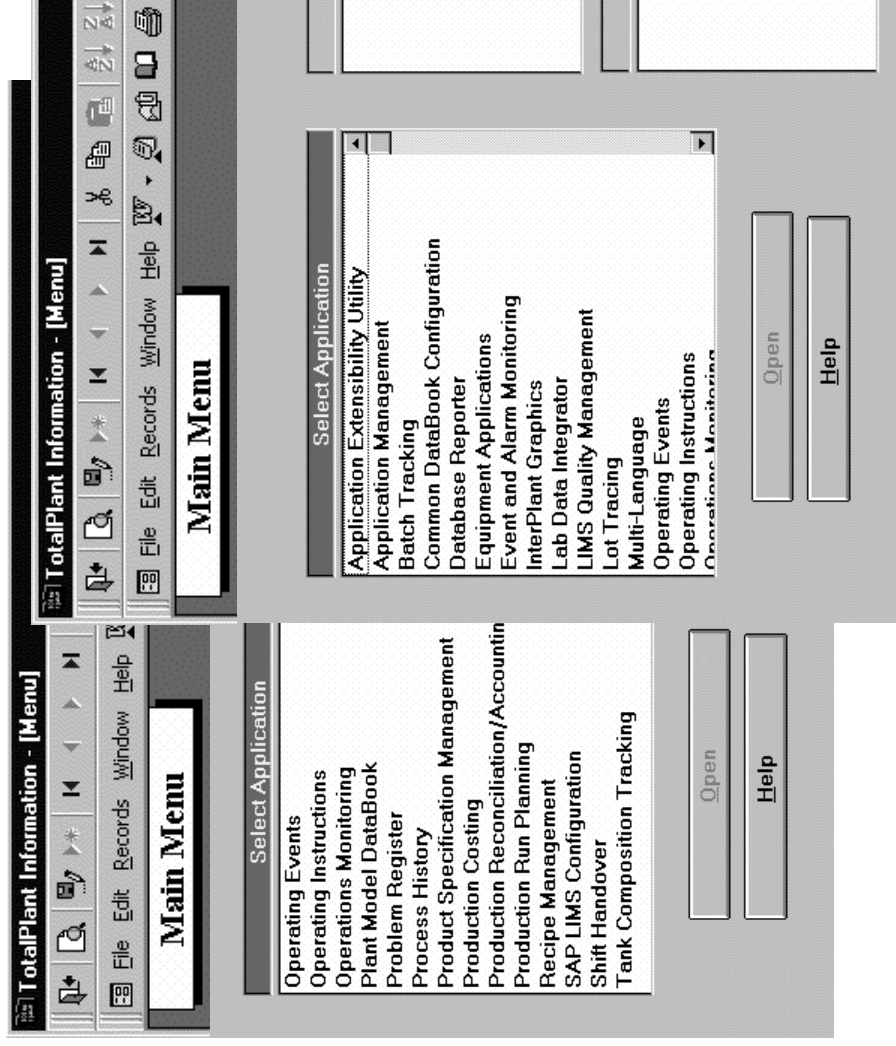
- Event and Alarm Monitoring (a.k.a. Event Monitoring) is an purchasable option.
- Multi-Language support can be implemented by the regional Honeywell affiliate.
- Other Uniformance applications, such as LIMS, are purchasable options. If installed and enabled, the applications appear on the Main Menu.

TPI Main Menu Example

The TPI Main Menu for a particular site will show the applications that have been installed at that site.

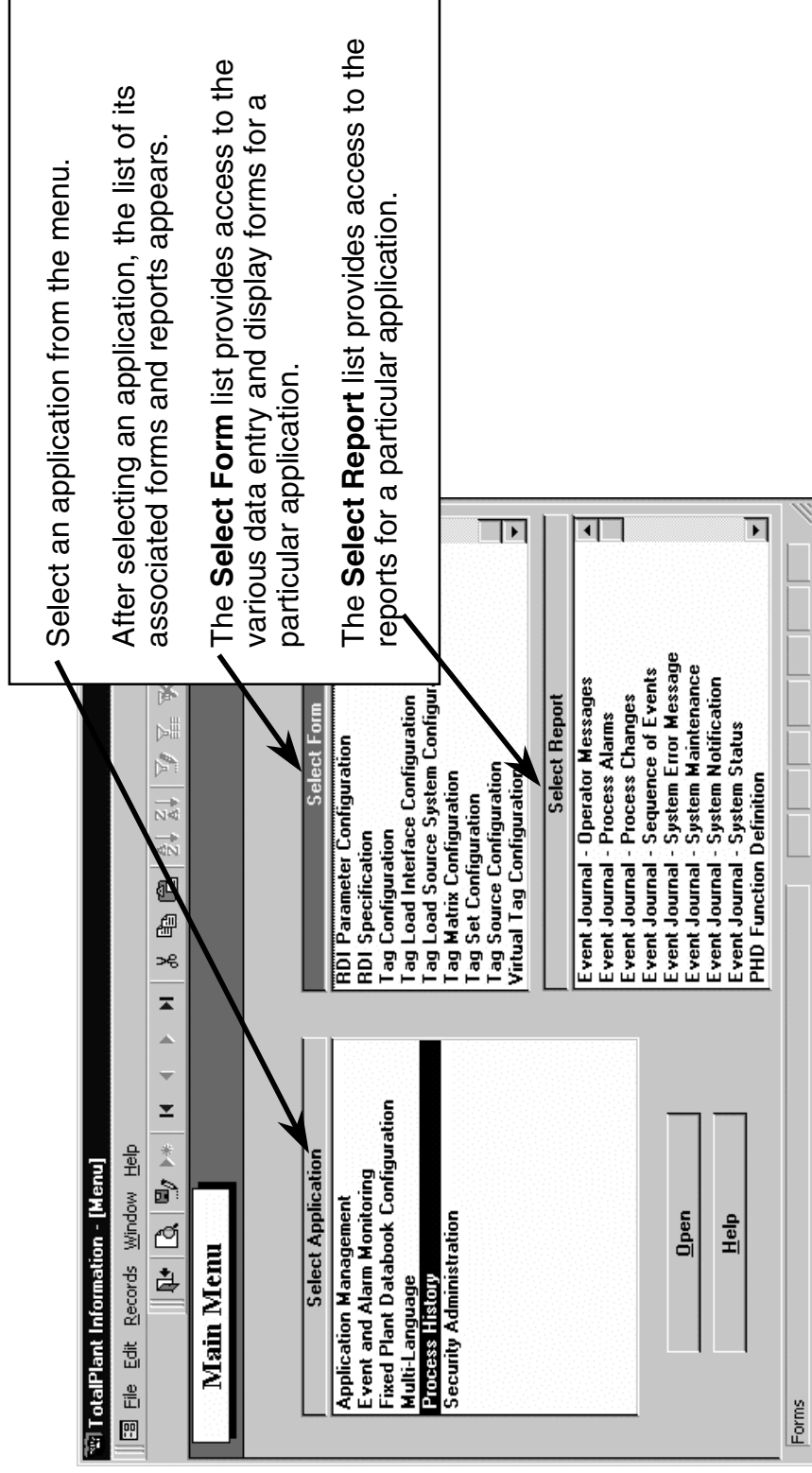
This example includes many of the PHD and Business.Flex applications.

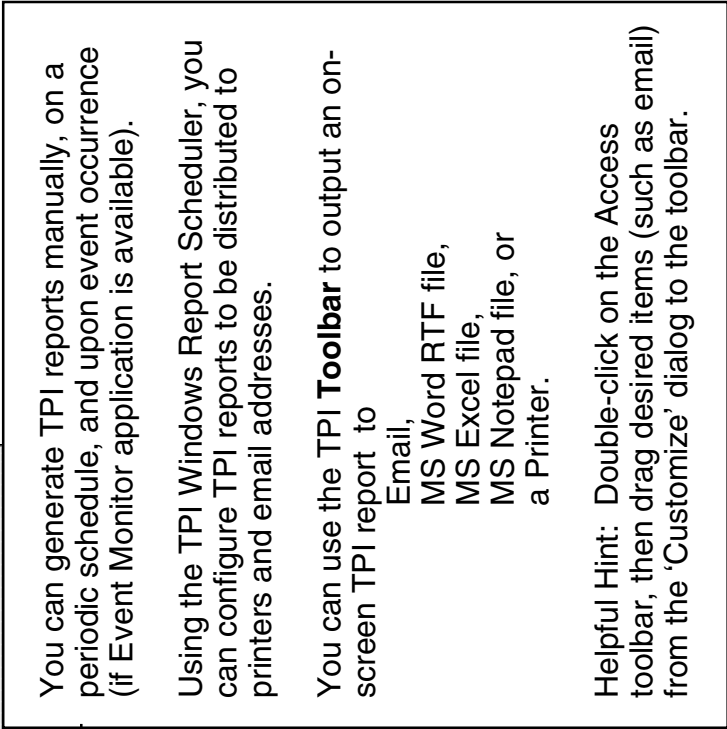
The Business.Flex Applications are a suite of integrated software applications that use PHD data to support higher level business decisions.



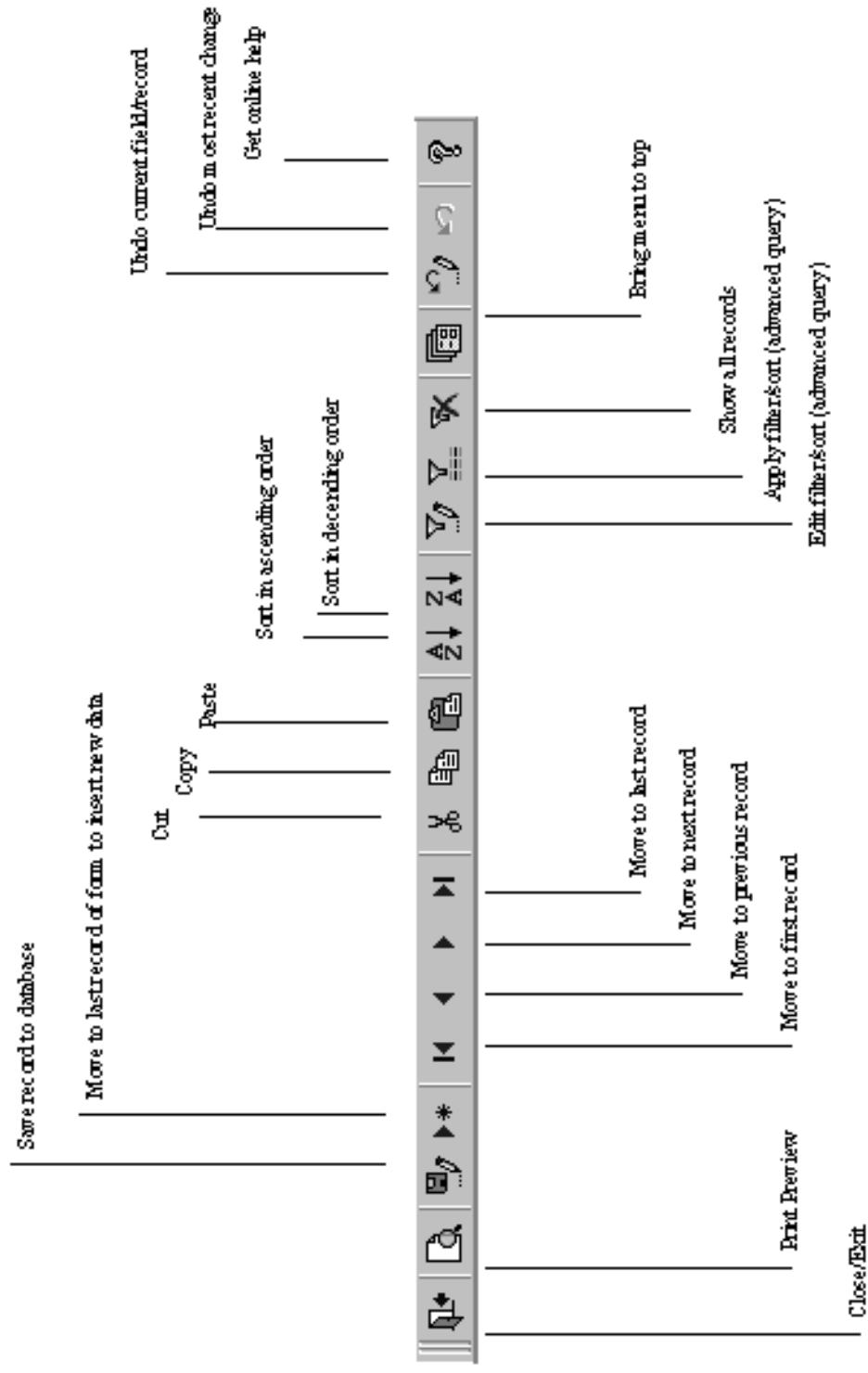
For more information on PHD and Business.Flex applications, go to this site:
<http://www.hispec.com/products/FR-Unified.htm>

TPI Forms and Reports





TPI Forms Toolbar



(excerpt from *TPI Application User Guide*)

Honeywell

Helping You Manage Your World

www.iac.honeywell.com