

# **uniformance**

# **Overview of Uniformance Client**

# Lesson Objective

---

## Objective

Recognize the purpose of each Uniformance Desktop component and its software, hardware, and logon requirements

**Note:** This course module does not discuss all of the capabilities of the Uniformance Desktop - only the basic purpose of each desktop component.

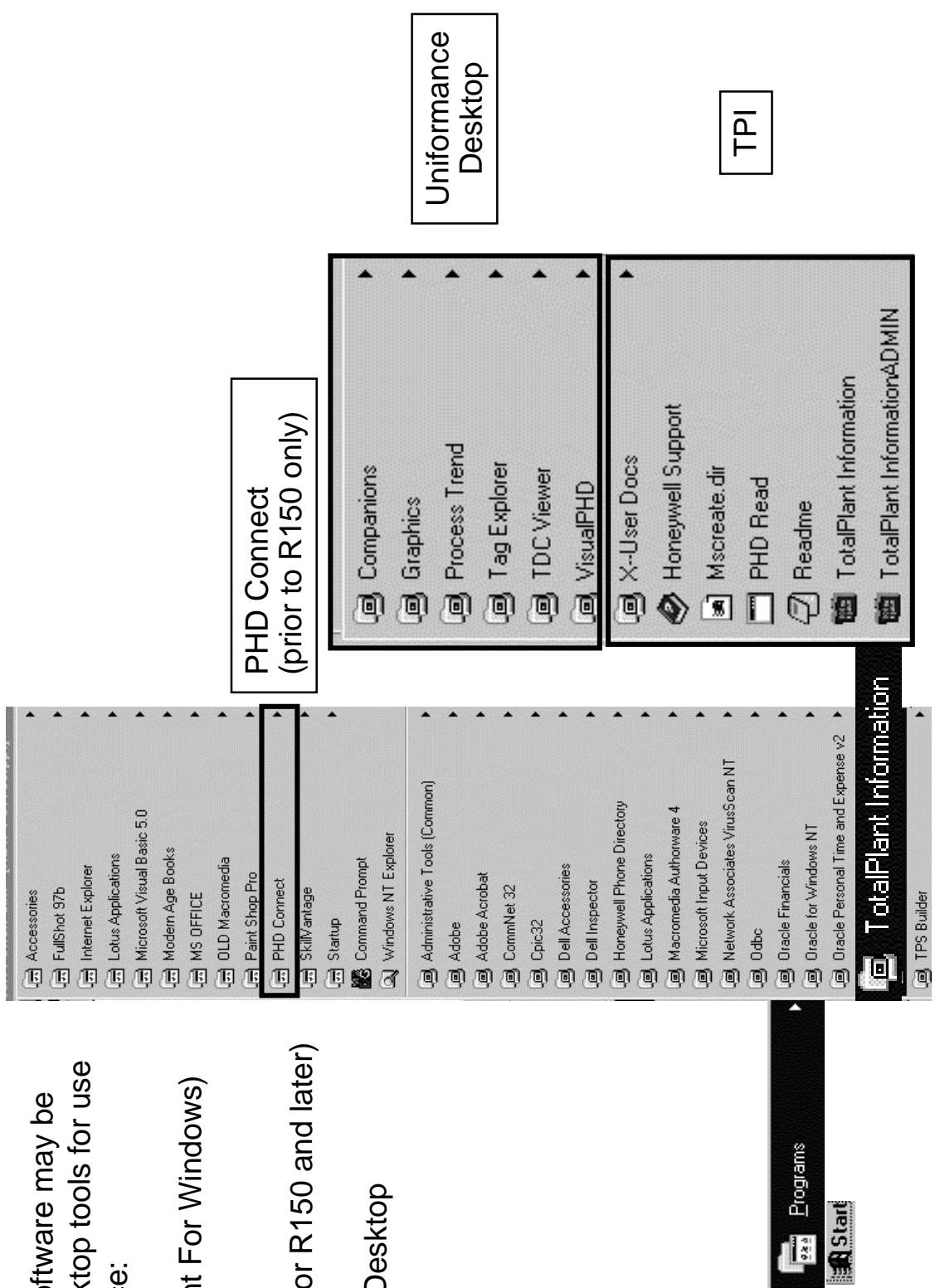
## Topics

- Uniformance Client Overview
- Uniformance Client Installation Guide
- Purpose of each component
  - Excel Companion
  - Tag Explorer
  - Process Trend
  - Visual PHD
  - PowerPoint Companion
  - Graphics Library
  - TDC Viewer
- Uniformance Client Software Requirements
- Uniformance Desktop Requirements

# Uniformance Client Overview

The following software may be installed as desktop tools for use with Uniformance:

- TPI (TotalPlant For Windows)
- PHD Connect (not required for R150 and later)
- Uniformance Desktop



# Uniformance Client Installation Guide

Refer to the *Uniformance Client Installation Guide*, PH06150 (on the Uniformance Documentation CD) for instructions on the three setups to install TPI, PHD Connect, and Uniformance Desktop.

Explo - Z:\WINDOW\S\DESKTOP

File Edit View Tools Help

All Folders

Unf\_150\_0\_4 (Z:)

Aix

hpux

Vms

Windows

APPLICATIONS

Cc32

DBSUPPORT

Desktop

OPC\_SERVER

PHD\_SERVER

1 object(s) selected

Contents of Z:\WINDOW\S\DESKTOP

Name

Type

Lims

File Folder

PHD\_CONNECT

File Folder

Tpi

File Folder

TPIDESKTOP

File Folder

Uniformance Desktop!

Choose which components to install by checking the boxes below. Press the Options buttons to select sub-components.

PHD Client

☒

564 k

Options

Visual PHD

☒

17484 k

Options

Process Trend

☒

21704 k

Options

Tag Explorer

☒

15852 k

Options

Companions

☒

10153 k

Options

Graphics Library

☒

4673 k

Options

TDC Viewer

☒

13320 k

Options

TPH Migration

☐

9319 k

Options

Scheduler

☐

2408 k

Options

Disk Space Required:

42701 k

Disk Space Remaining:

423690 k

< Back

Next >

Cancel

Uniformance Desktop!

Choose which components to install by checking the boxes below. Press the Options buttons to select sub-components.

PHD Client

☒

564 k

Options

Visual PHD

☒

17484 k

Options

Process Trend

☒

21704 k

Options

Tag Explorer

☒

15852 k

Options

Companions

☒

10153 k

Options

Graphics Library

☒

4673 k

Options

TDC Viewer

☒

13320 k

Options

TPH Migration

☐

9319 k

Options

Scheduler

☐

2408 k

Options

Disk Space Required:

42701 k

Disk Space Remaining:

423690 k

< Back

Next >

Cancel

Visual PHD Components

☒ Visual Components

1698 k

☒ Modtag

2253 k

☐ Excel Examples

4165 k

☐ Visual Basic Examples

20070 k

☐ Web Download

18246 k

OK

Cancel

Uniformance Companion Components

☐ Excel 95

2452 k

☒ Excel 97

4459 k

☒ PowerPoint 97

4821 k

OK

Cancel

Graphics Library Components

☒ Hydrocarbon Processing

2700 k

☒ Pulp and Paper

884 k

OK

Install to

Cancel

Graphics Library Location(s)

☐ Office 95 Clipart Directory

3584 k

☒ Office 97 Clipart Directory

3584 k

☐ Honeywell Install Directory

3584 k

OK

Cancel

Uniformance Desktop setup screen

If no options are checked in the Visual PHD Components dialog, the Visual PHD Components dialog, the PHD OLE Server and the Visual PHD help files will be installed.

"PHD Client" installs and configures the system files needed to connect to PHD, and installs NETREAD, a DOS-based utility.

For R150 and later, "Visual PHD" must be installed to use TPI.

Note: There is a PowerPoint Companion for Office 2000. It is the only desktop component tested to work with Office 2000.

# Excel Companion

The Excel Companion adds a 'Uniformance' menu to standard Excel.

Using this menu, PHD data, Event data, and LIMS data can be retrieved and placed on a worksheet.

Once the data is on the worksheet, Excel functions can be used to analyze the data.

## Note:

Visual PHD must be installed to use the Excel Companion.

The screenshot shows the Microsoft Excel interface with the 'Shift Report' worksheet. The 'Uniformance' menu is visible in the top right corner. The 'Get PHD Data' dialog box is open, showing the 'Tag Explorer' and 'Unit Pick List' tabs. The 'Tag Explorer' tab is active, displaying a list of tags and their aggregates. The 'Unit Pick List' tab is also visible, showing a list of units and their aggregates. The 'Get PHD Data' dialog box is used to retrieve data from the PHD system and place it on the worksheet.

Tag	Description	Aggregate	Value	Aggregate	Value
6	FIC21941.OP	PMDP FOR TANK 3	31.34	Snapshot	16.75
7	FIC21941.PV	PMDP FOR TANK 3	Average	Snapshot	31.56
8	FIC21941.SP	PMDP FOR TANK 3	Average	Snapshot	18.89
9	TIC21941.OP	STEAM FLOW	18.81	Snapshot	10.05
10	TIC21941.PV	STEAM FLOW	18.81	Snapshot	10.05
11	TIC21941.SP	STEAM FLOW	18.81	Snapshot	10.05

The 'Get PHD Data' dialog box is open, showing the 'Tag Explorer' and 'Unit Pick List' tabs. The 'Tag Explorer' tab is active, displaying a list of tags and their aggregates. The 'Unit Pick List' tab is also visible, showing a list of units and their aggregates. The 'Get PHD Data' dialog box is used to retrieve data from the PHD system and place it on the worksheet.

# Excel Companion, *continued*

---

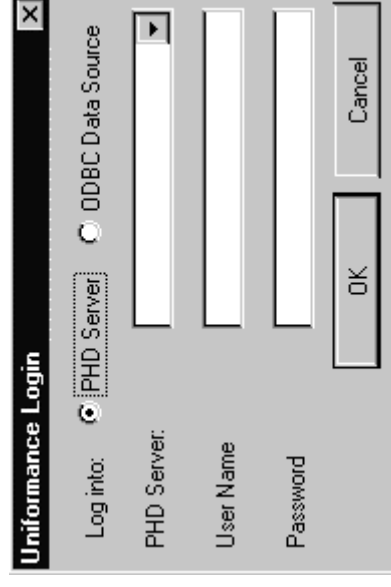
The Excel Companion initially tries to fetch data without doing a login. If PHD security allows this, no login will be required.

The user will only be prompted for a PHD login if PHD security is configured to require a username and password to access data.

Each PHD Host requires an associated ODBC DSN to facilitate functions that require information from both PHD and Oracle.

When you query a new Oracle ODBC data source, the Excel Companion automatically tries to log in to the Oracle ODBC data sources using your NT user name. If successful, you do not have to log in to Oracle. Otherwise, an Oracle ODBC login box appears.

Depending on the security settings in PHD, when you query a new PHD host, the Excel Companion tries to query the PHD Host without logging in. If successful, you do not have to log in to PHD; otherwise, the PHD login box appears.



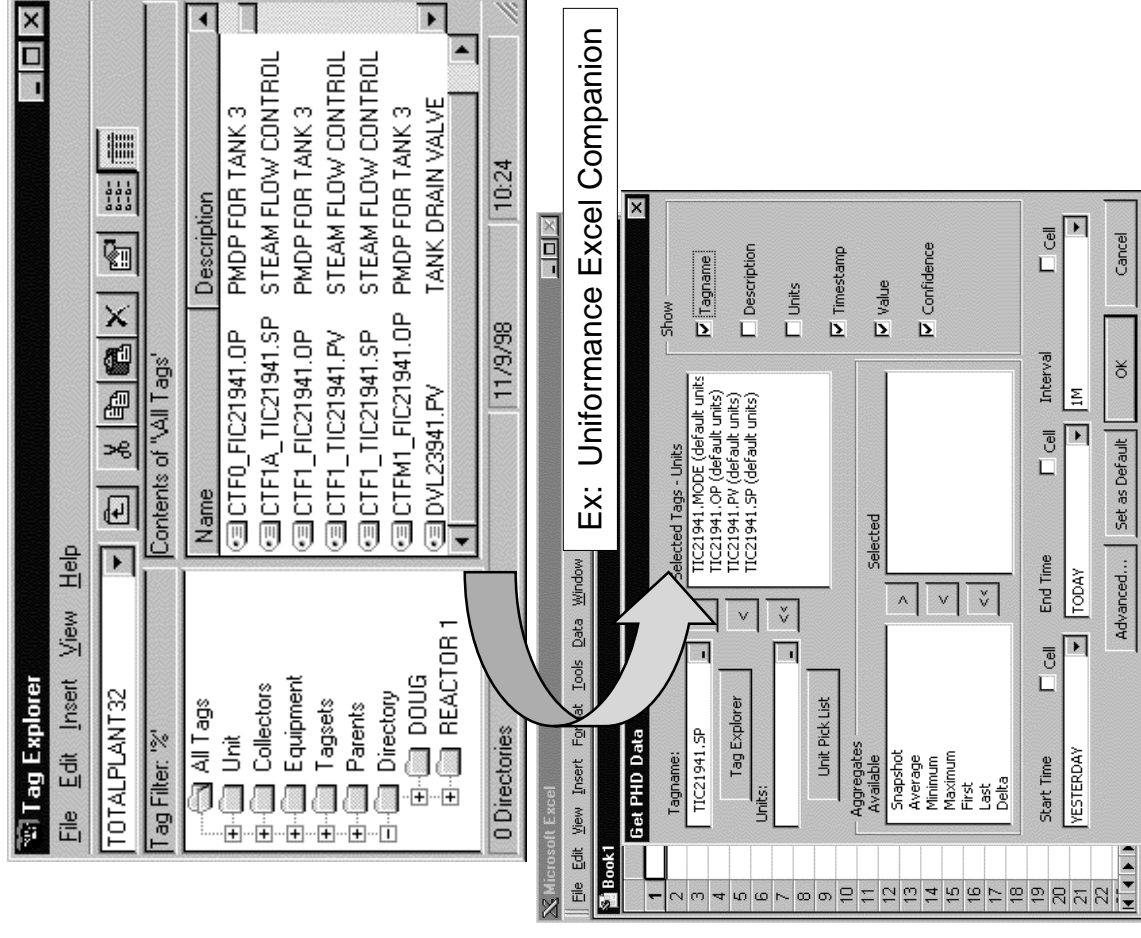
# Tag Explorer

The Tag Explorer is central to organizing PHD tags for other desktop tools.

Users can drag/drop tags and/or directories from Tag Explorer into other applications.

PHD automatically organizes tags into standard directories, based on relationships in the Uniformance Fixed Plant Databook.

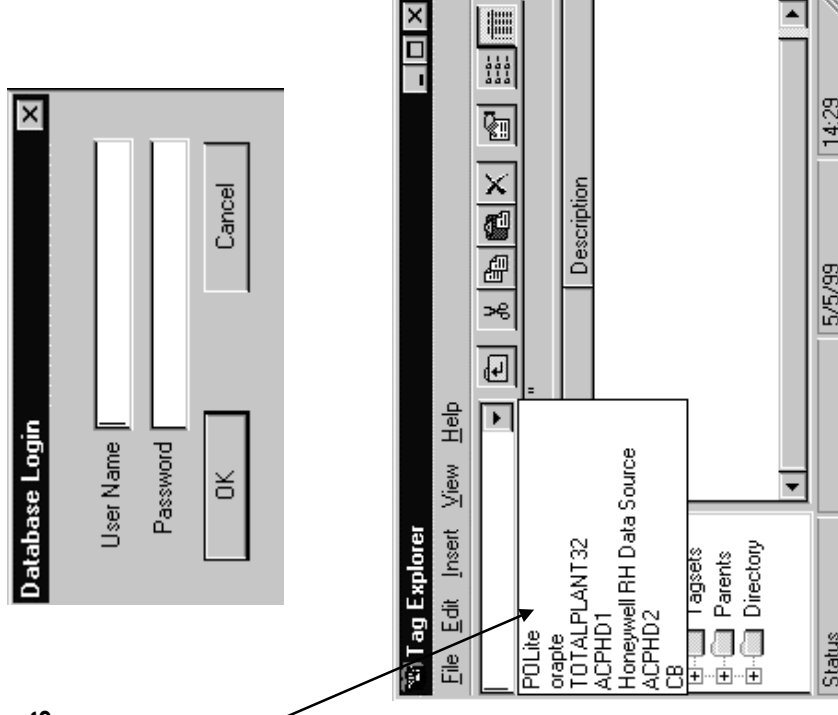
Users can organize (copy/paste) tags into custom directories within the 'Directory' directory.



# Tag Explorer, *continued*

---

- When you start Tag Explorer and expand a directory, if Integrated NT Security (INTS) is not enabled, the user is automatically logged on as the default user 'PHD\_READONLY'. If INTS is enabled, the user is logged on as the NT user. If the NT user has not been configured as a TotalPlant Information user, then a login error box appears.
- The Database Login dialog does not allow the user to login to a different DSN (data source name). A dropdown box displays a list of different ODBC Database Sources to choose from.
- The PHD\_READONLY account can browse or copy tags into other applications.
- Adding/modifying directories requires a user with PHD read/write access (configured as a member of the Full Permission Role through the PHD Security TPI form).
- After a directory is created, it can be made public or private.

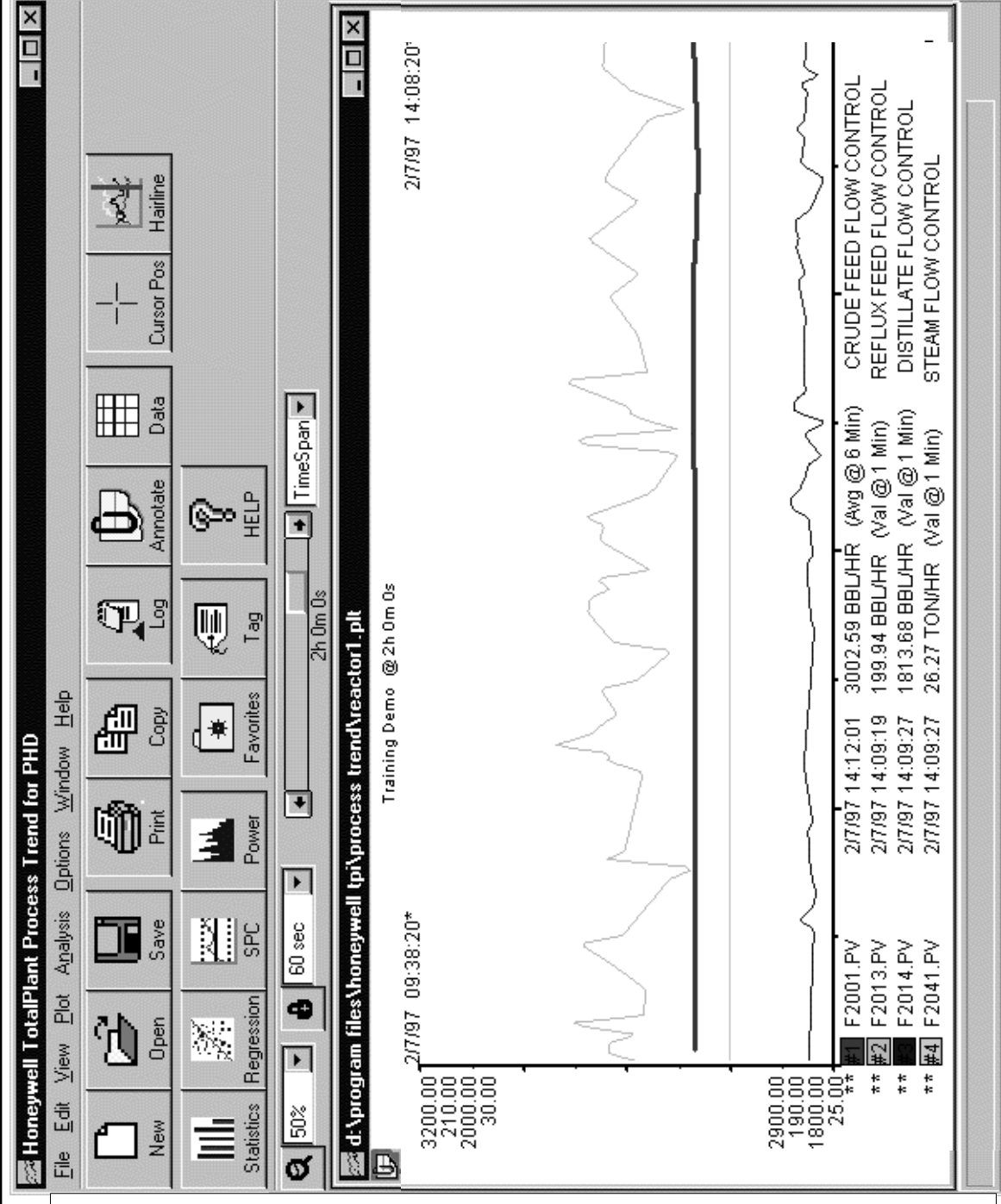




# Process Trend

Trend and analysis tool  
for a PC

Designed to support  
engineering personnel



# Process Trend, *continued*

---

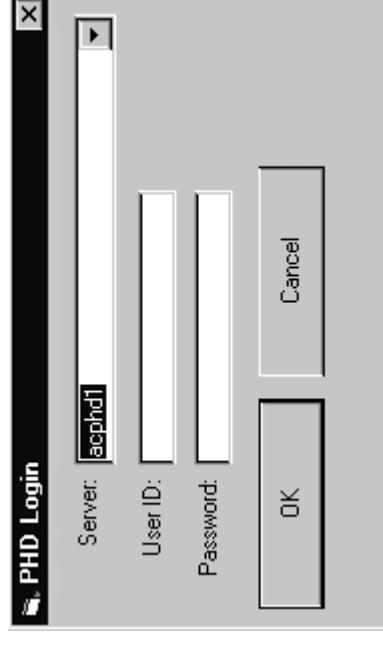
Process Trend requires a valid user name and password.  
The default Server is the value of PHD\_HOST.

(Prior to R150, if an invalid user name and/or password was entered, the user had the option to continue in a read-only access mode.)

The user can select these login options:

Keep Password option - The password will automatically be encrypted and saved, such that when a plot file is invoked again, the login to the default PHD Server is automatic.

Bypass PHD Login option - The bypass login option assumes that if the user is logged into the PC, then the user has access to all servers without requiring another login. If a proxy has been configured in the PHD Server, the user will be automatically logged into the default server with the proxy login.



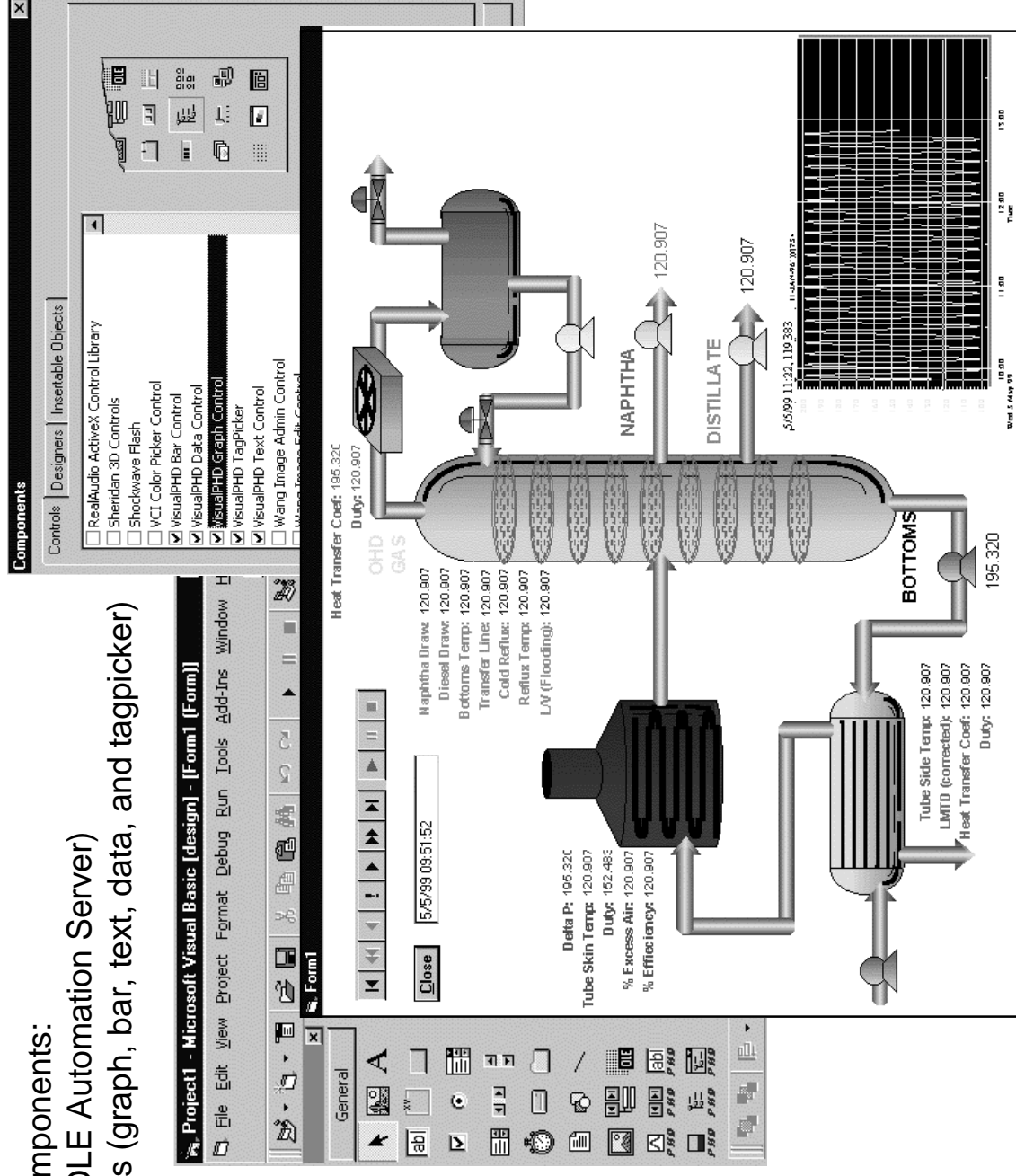
# Visual PHD

Visual PHD provides ActiveX components:

- ActiveX server (a.k.a. OLE Automation Server)
- Prebuilt ActiveX controls (graph, bar, text, data, and tagpicker)

VisualPHD ActiveX controls are tested to work in

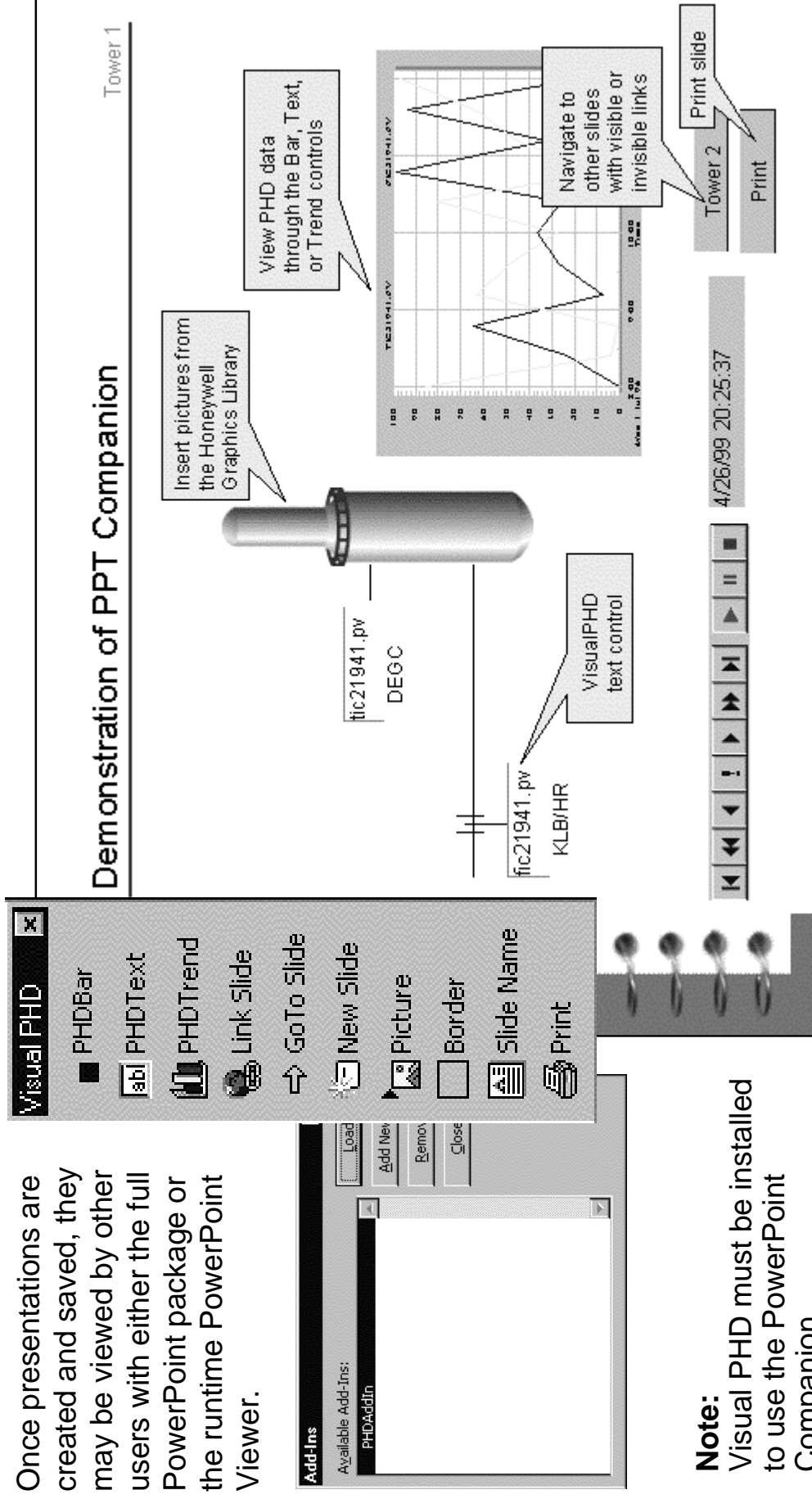
- Excel,
- PowerPoint,
- Internet Explorer, and
- Visual Basic 5.0/6.0



# PowerPoint Companion

The PowerPoint Companion is an add-in that provides a Visual PHD toolbar, making it easy to incorporate PHD data and Visual PHD ActiveX objects into presentations. The PowerPoint Companion enables the full drawing and presentation features of PowerPoint to be used with PHD data.

Once presentations are created and saved, they may be viewed by other users with either the full PowerPoint package or the runtime PowerPoint Viewer.

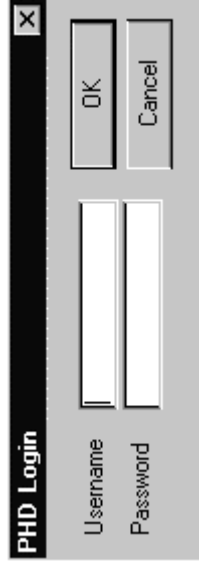


**Note:** Visual PHD must be installed to use the PowerPoint Companion.

# PowerPoint Companion, *continued*

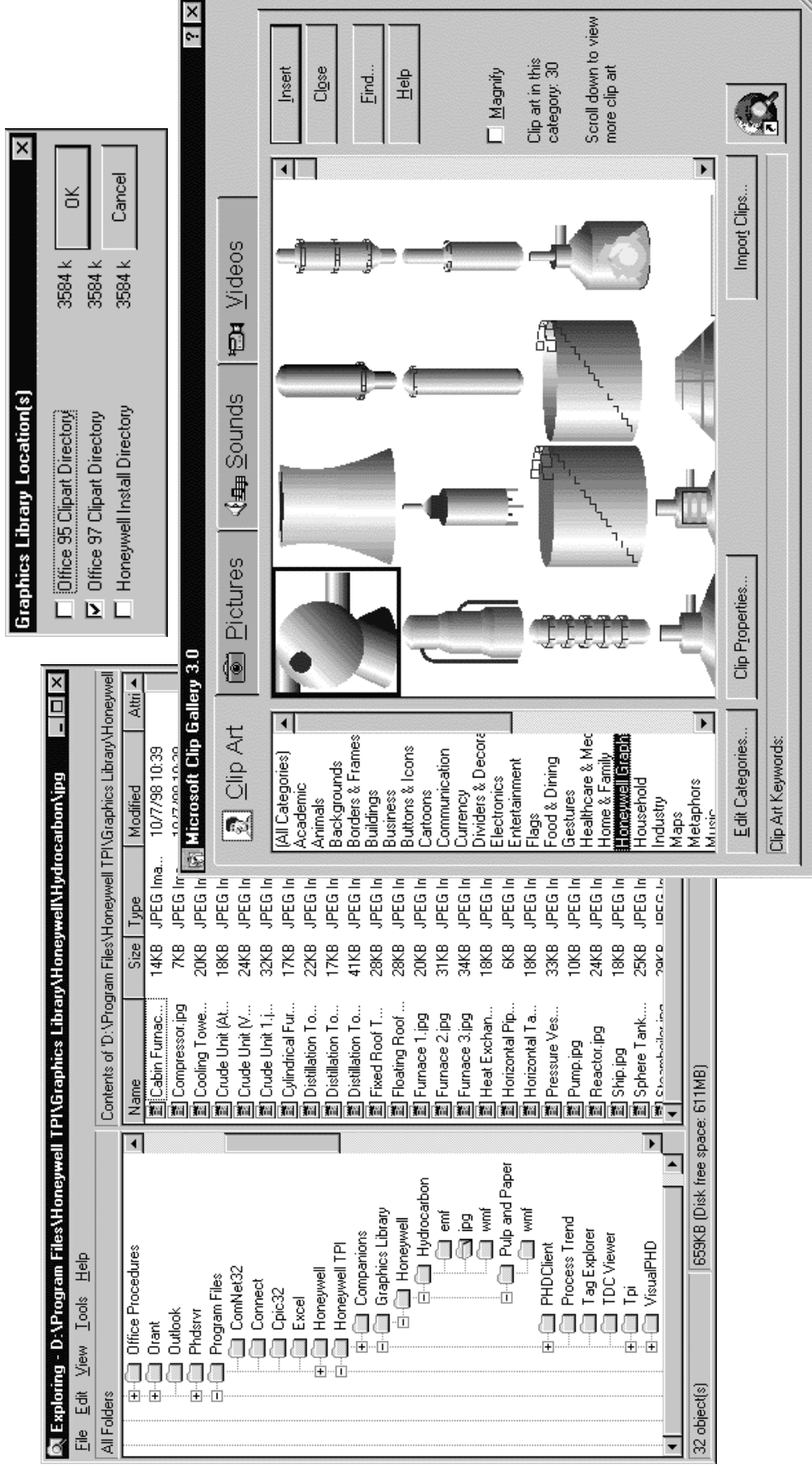
---

If security is enabled on PHD, the user must place the cursor over the PHD Data Control (in slide show view), then right click to display the Login menu.



# Graphics Library

The Graphics Library is a clip art library of process equipment graphics. There are two libraries: "Hydrocarbon" and "Pulp and Paper". You specify their location during installation.



# TDC Viewer

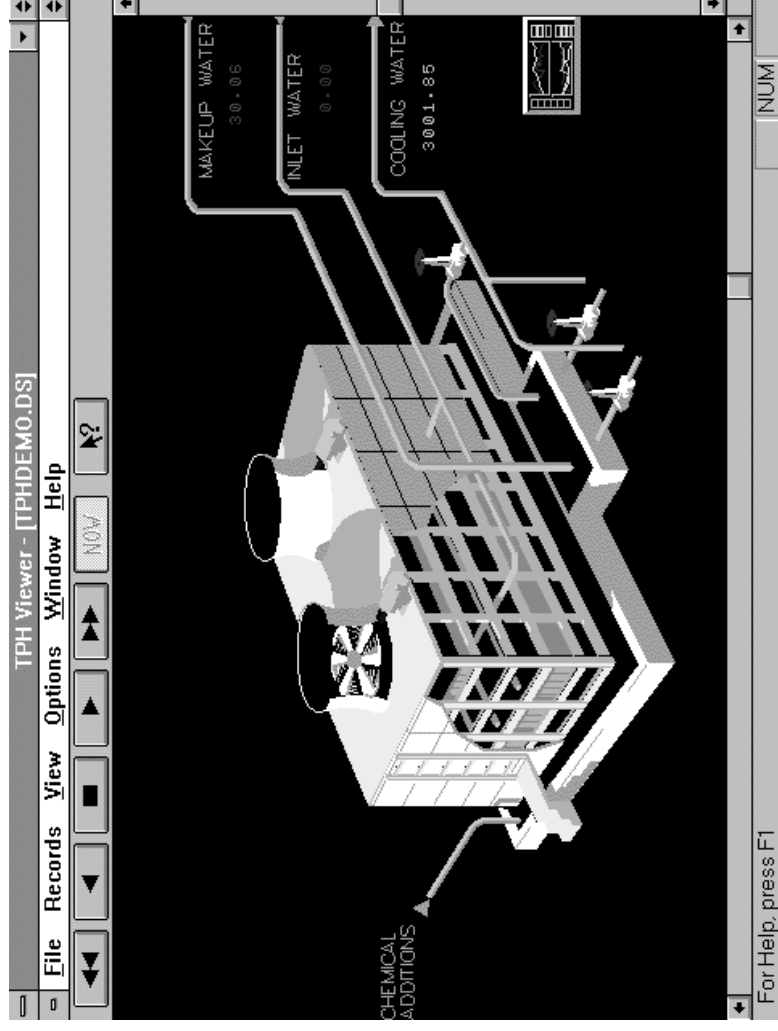
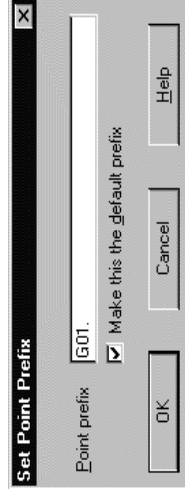
---

The TDC Viewer allows a user to view TDC 3000 schematic files (.DS files) on a PC and replay PHD history through the schematic.

.DS files can be transferred from the LCN to a PC using Transfer for DOS, a CM50, or Honeywell's File Transfer application for TPS nodes. TDC Viewer also supports .DS files created on a PC using PE Build for DOS or PE Build for Windows.

Schematics may require massaging before users can replay PHD history:

- If untyped variables exist, their type must be specified through the Edit function.
- If unhistorized variables exist in the schematic, a static database can be created so error indications do not appear.
- If the PHD database uses tag prefixes, the viewer must be configured to add the prefix.



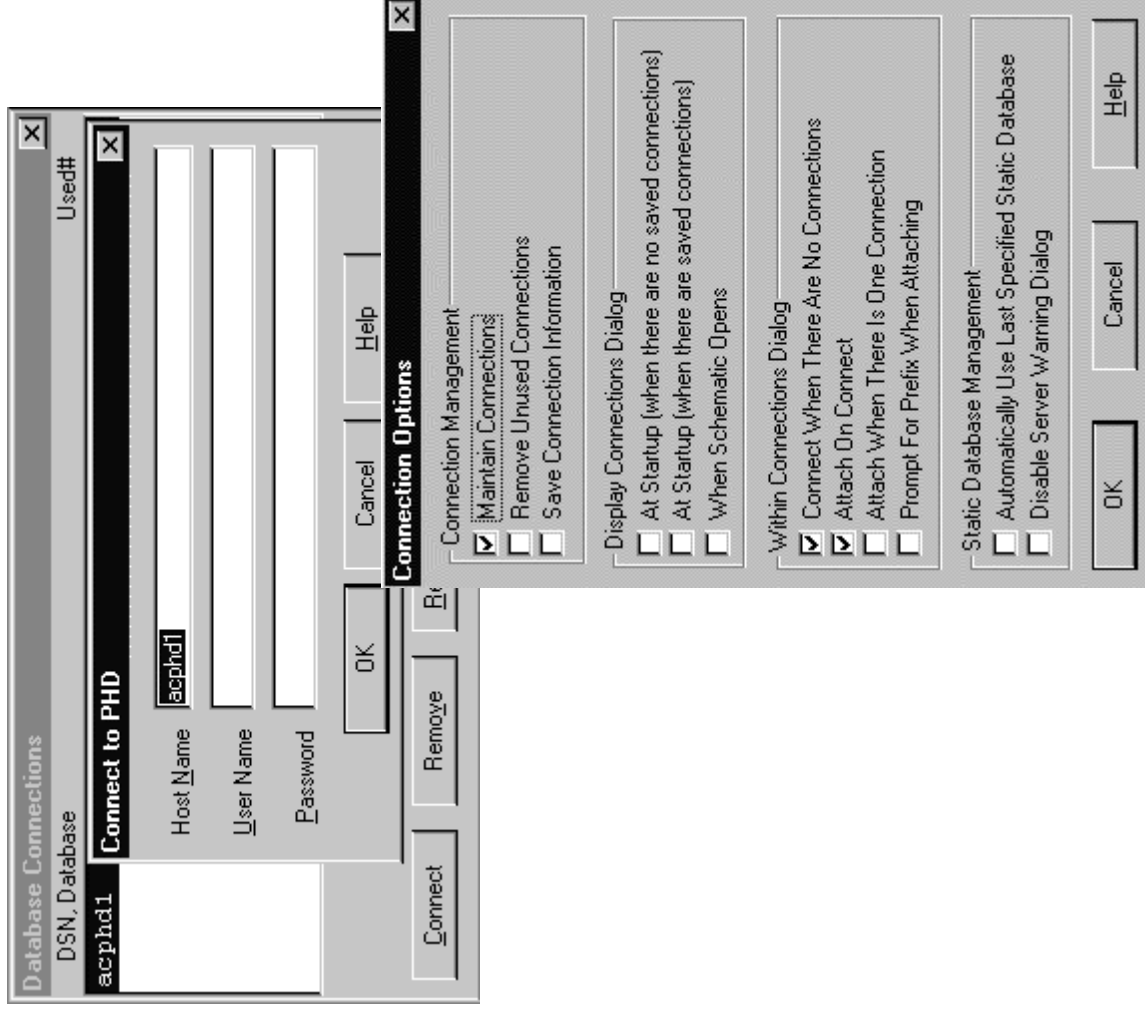
# TDC Viewer, *continued*

---

A connection to a PHD History Database must be established before schematics can attach to it.

In the 'Connect to PHD' dialog, users enter the name of the PHD host, identify a registered user for that host, and provide a password for authentication.

The user can set various connection options.





# Uniformance Client Requirements

Excerpt from the *Uniformance Client Installation Guide*, PH06150 (available on the Uniformance Documentation CD)

You can use R130, R140, or R150 Uniformance Desktop against an R150 PHD Server.

If the desktop and server are on the same machine, they both must be R150.

## Uniformance Client Software

The following list of software is provided from Honeywell as desktop tools for use with Uniformance:

- TPI (TotalPlant For Windows)
- PHD Connect (prior to R150 only)
- Uniformance Desktop

## Required Third Party Software for the Uniformance Client

- Oracle SQL\*NET
  - ODBC Driver for Oracle
- Two possible sources of the ODBC drivers are Oracle and Intersolve. If you choose to use the Oracle drivers, Honeywell recommends that you use the Oracle73 version 2.5 or greater.

Either Microsoft Office 95 or 97 is required for:

- Uniformance companion for Microsoft PowerPoint
- Uniformance companion for Microsoft Excel
- Uniformance Graphics Library, and
- RH Utilities

Uniformance companion for Microsoft Excel requires:

- DAO 3.5 for Microsoft Office 97, or
- DAO 3.0 for Microsoft Office 95

Uniformance PowerPoint 2000 companion requires:

- Microsoft PowerPoint 2000

## Software Dependencies

TPI requires the following:

- Oracle SQL\*NET
- ODBC Driver for Oracle
- PHD Connect (prior to R150 only)  
PHD Connect requires Winsock 1.1 TCP stack

# Uniformance Client Requirements, *continued*

Excerpt from *Uniformance Database System Specification and Technical Data*, PH03150. (Available on the Uniformance Documentation CD)

## Uniformance Client Minimum Disk Space Requirements

	Disk Space (MB)
Uniformance Desktop	56
TPI	72*
PHD Connect (prior to R150 only)	2
Oracle Client	67
<b>Total =</b>	<b>197MB</b>

\* TPI requires 72MB if Microsoft Access is installed and 66MB if it is not present.

### Notes:

- TPI does not have to be loaded on each Desktop PC.
- Oracle Client software is needed for TPI and the Tag Explorer. If these tools are not used, Oracle Client does not need to be loaded.

## Uniformance Desktop PC Requirements

	Minimum	Recommended
<b>Model</b>	Pentium 120 MHz	Pentium 266 MHz or higher
<b>RAM</b>	24 MB	32 MB or larger
<b>Disk</b>	300 MB	1 GB or more
<b>OS</b>	Windows 95, Windows 98, Windows NT	Windows 95, Windows 98, or Windows NT
<b>Optional Tools</b>	MS Office 97, Visual Basic 5.0/6.0, Front Page 98, I.E. 4.0	
<b>Network</b>	Microsoft TCP/IP or equivalent	Microsoft TCP/IP or equivalent
<b>Display</b>	VGA 640 x 480	SVGA

Note that the system requirements for any other software is not accounted for in the above table.

# Honeywell

---

*Helping You Manage Your World*

[www.iac.honeywell.com](http://www.iac.honeywell.com)