

# Install and Configure a TPS GUS Node

## Objective

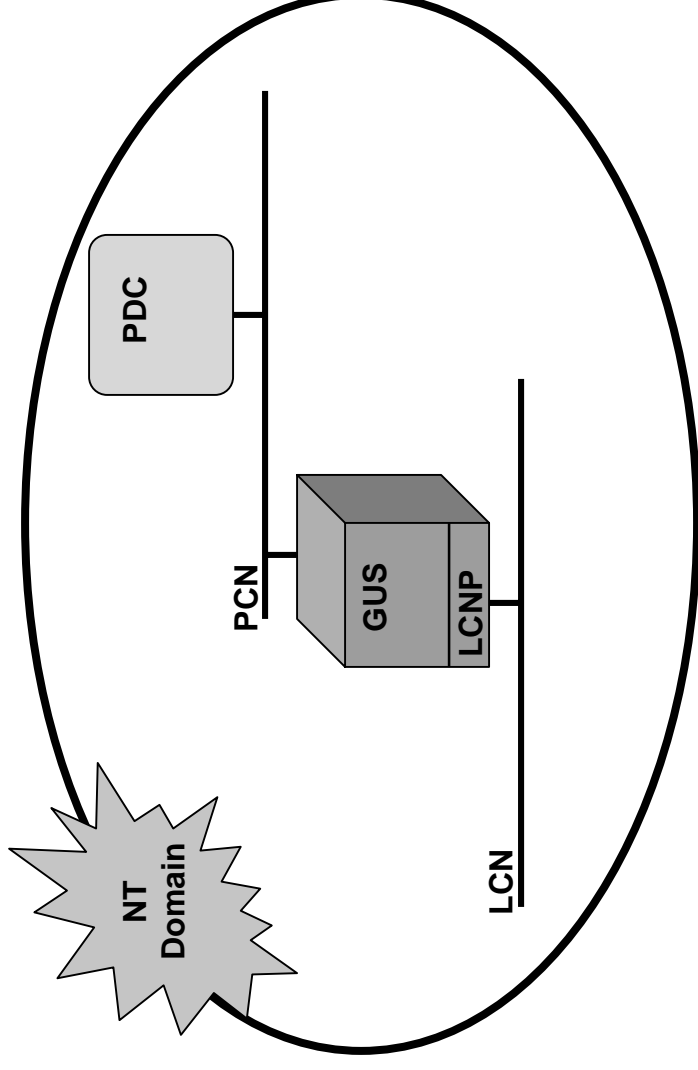
Given an NT Workstation node, install the TPS GUS software and configure the node to be a TPS GUS node.

## In This Module

- Overview of GUS Node Configuration
  - General NT setup (Admin password, date)
  - Add LCNP board
  - Run Configuration Utility
  - Connect GUS to LCN
  - Load TPN System files to HM
  - Add GUS to NCF
  - Prepare GUS for display replication
  - Configure TCP/IP and connect GUS to PCN
  - Add GUS to NT Domain
  - Setup GUS security (users, groups, etc.)
  - Distribute HOSTS and LMHOSTS files
  - Install GUS Personality and Optional Software
-

## Install and Configure a TPS GUS Node

### Overview

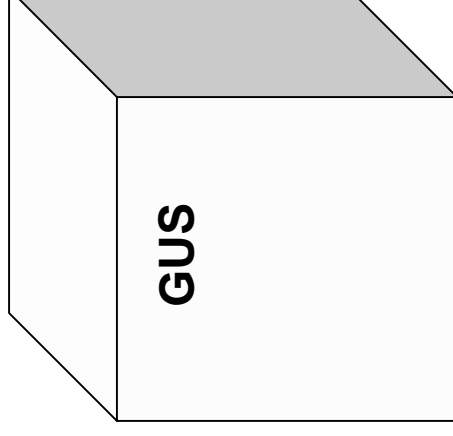


## **Install and Configure a TPS GUS Node**

### **In the Beginning...**

A GUS Node “as shipped” from Honeywell

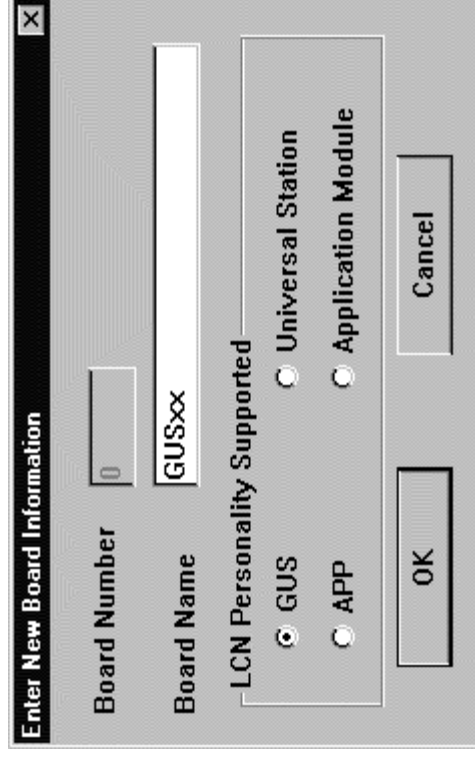
- Not on LCN
- Not on PCN
- Board Ø



## **Install and Configure a TPS GUS Node**

### **Remove/Add LCNP Board**

Define the LCNP board for the new GUS node



Enter New Board Information

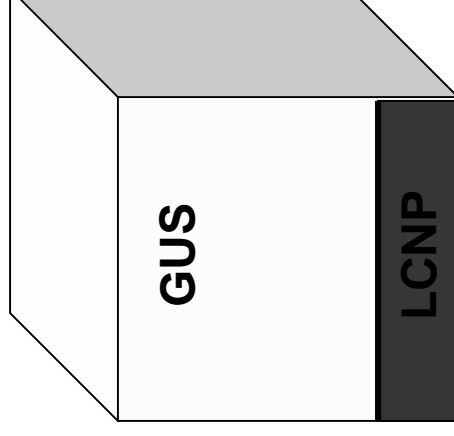
Board Number: 0

Board Name: GUSxx

LCN Personality Supported

☒ GUS ☐ Universal Station ☐ APP

OK Cancel



## Install and Configure a TPS GUS Node

### Configure GUS

#### LCNP configuration

- LCN Address
- NG name  
(enter a single space)
- LCN Name
- LCNP Reset Controls

The screenshot shows a window titled "GUSxx" with a tabbed interface. The "LCNP" tab is selected, showing configuration options for the LCNP adapter card. The "Data Access Configuration" tab is also visible. The "LCNP" tab contains a "Description" section with text about the LCNP adapter card and a "Form" section with fields for "LCN Address", "NG Name", "LCN Name", and "Personality". The "LCNP Reset Controls" section has checkboxes for "Local" and "Remote".

**GUSxx**

Emulated Disks | Data Access Configuration | Native Window | Keyboard | Printer

**LCNP**

**Description**

The LCNP adapter card supports the execution of a standard TDC Personality and provides connection to the LCN.

This form provides configuration information for the adapter's identity on the LCN network.

LCN Address: ☐ NG Name:

LCN Name:

Personality: GUS

**LCNP Reset Controls**

From LCNP Status Display ☒ Local ☐ Remote

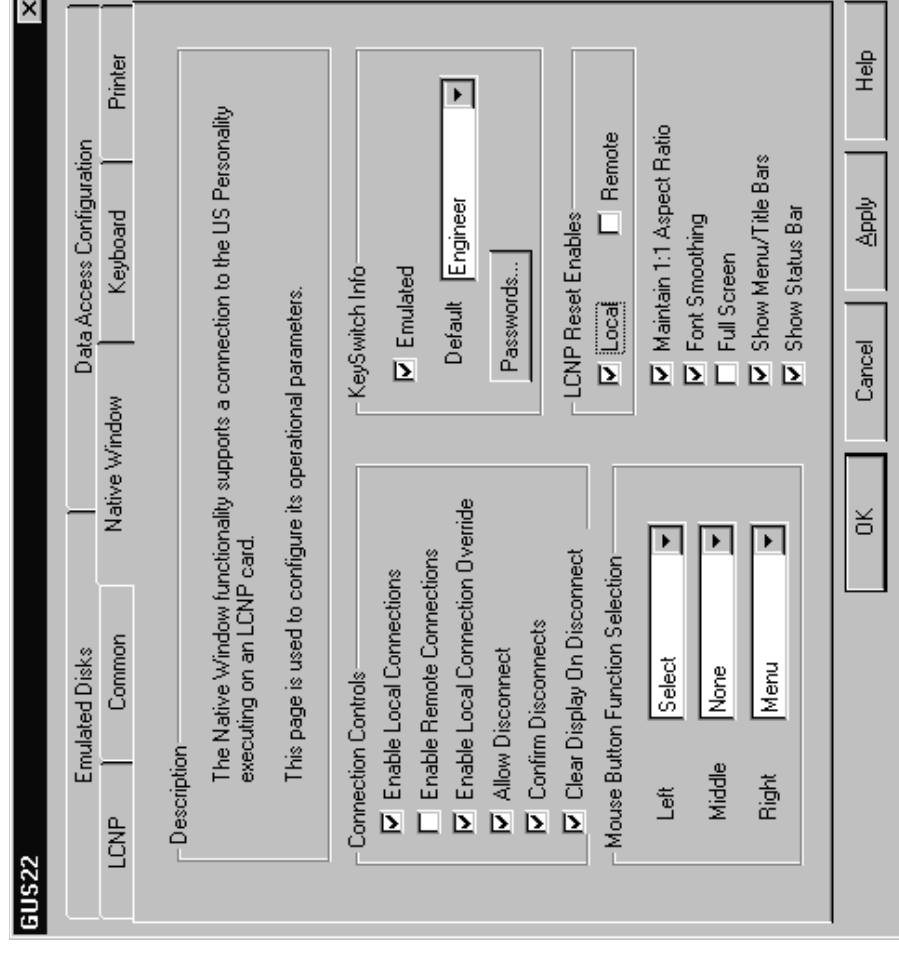
OK Cancel Apply Help

## Install and Configure a TPS GUS Node

### Configure GUS, continued

#### Native Window

- Local/Remote connections
- Keyswitch information
- Reset Controls

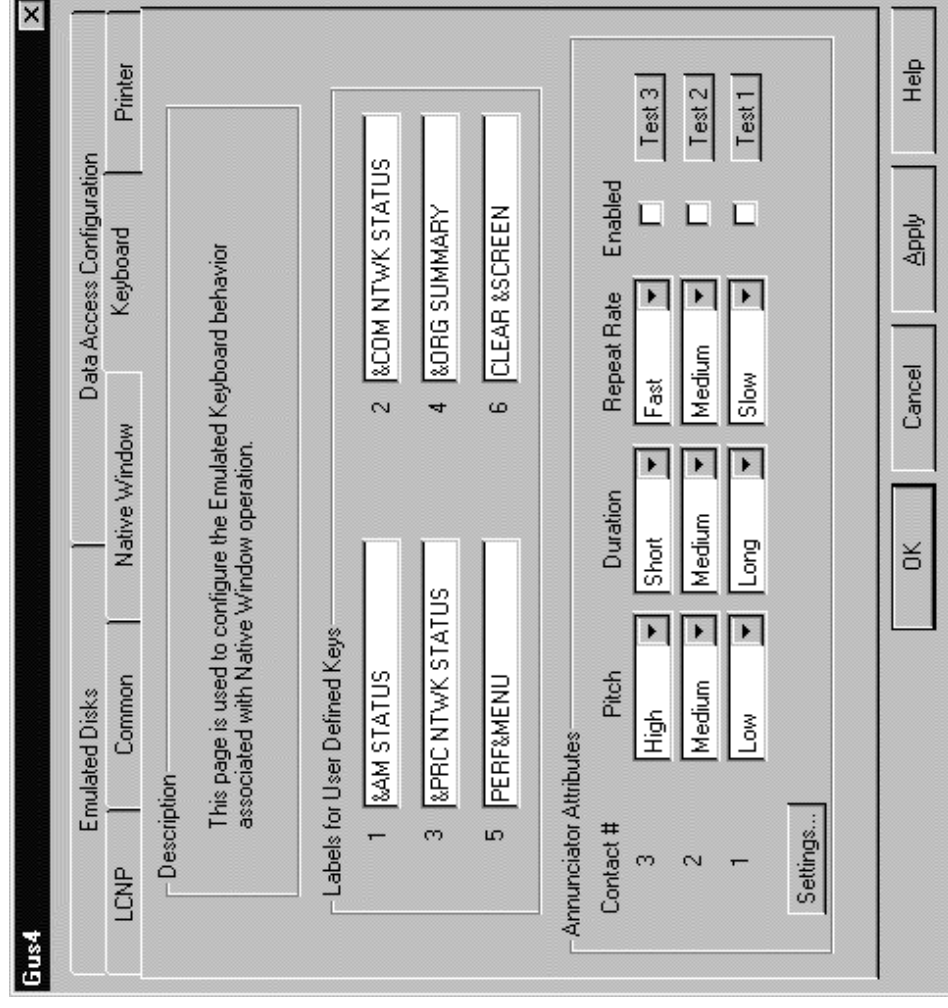


## Install and Configure a TPS GUS Node

### Configure GUS, continued

#### Keyboard

- Labels
- Annunciators - disable

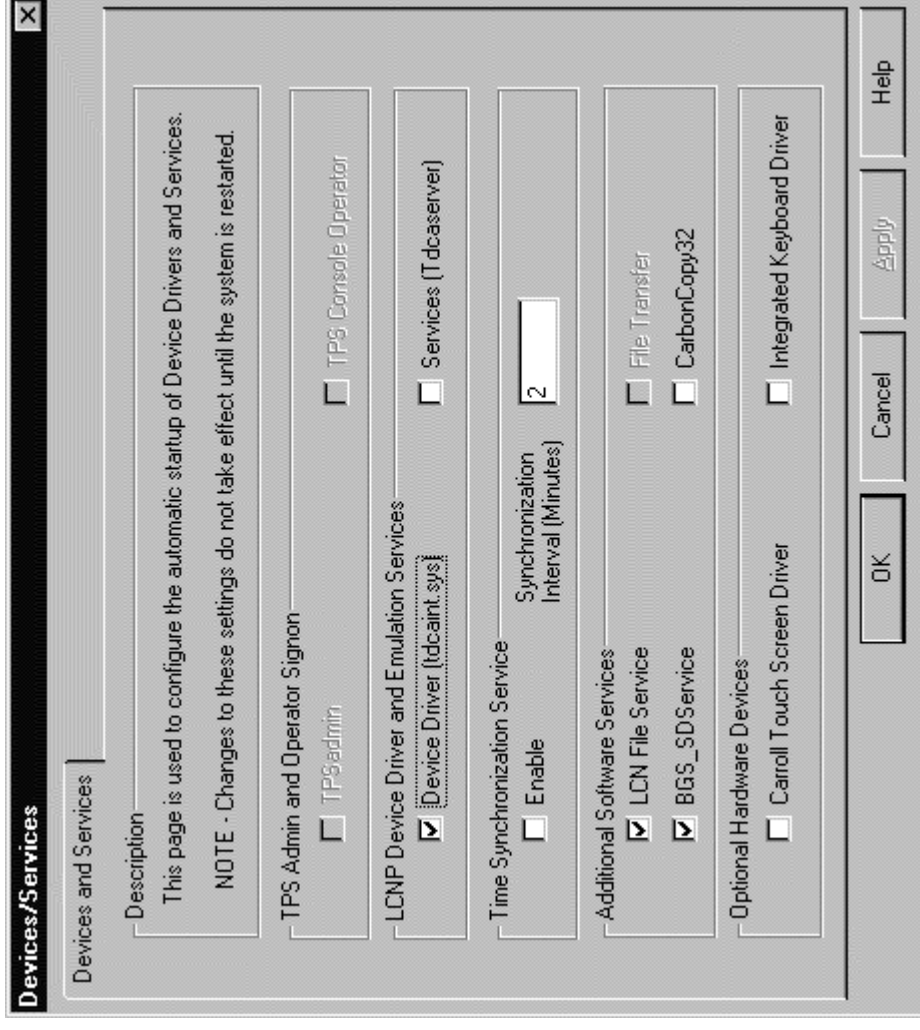


## Install and Configure a TPS GUS Node

### Configure GUS, continued

#### Devices/Services

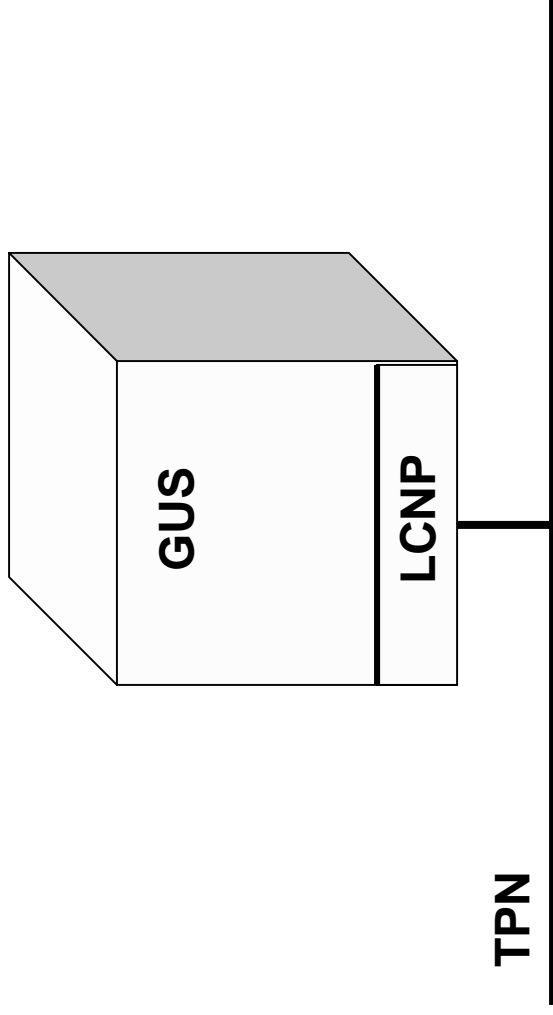
- Device Driver - **tdcaint.sys** file
- Services - **Tdcaserver**
- Time sync - disable





## **Install and Configure a TPS GUS Node**

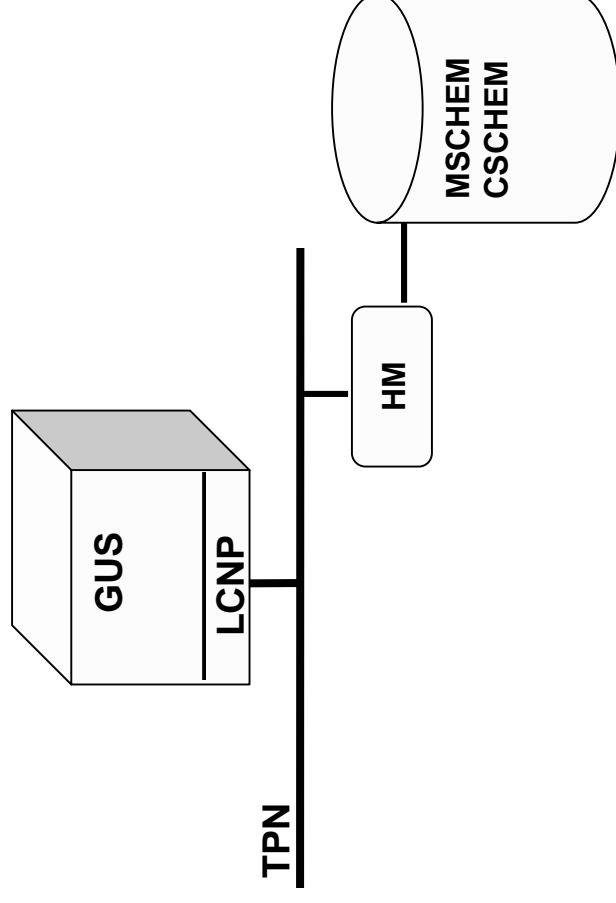
### **Connect GUS to LCN**



## Install and Configure a TPS GUS Node

### Load TDC System Files

Copy the MSCHEM and  
CSCHEM files to the History  
Module



## Install and Configure a TPS GUS Node

### Add GUS to NCF

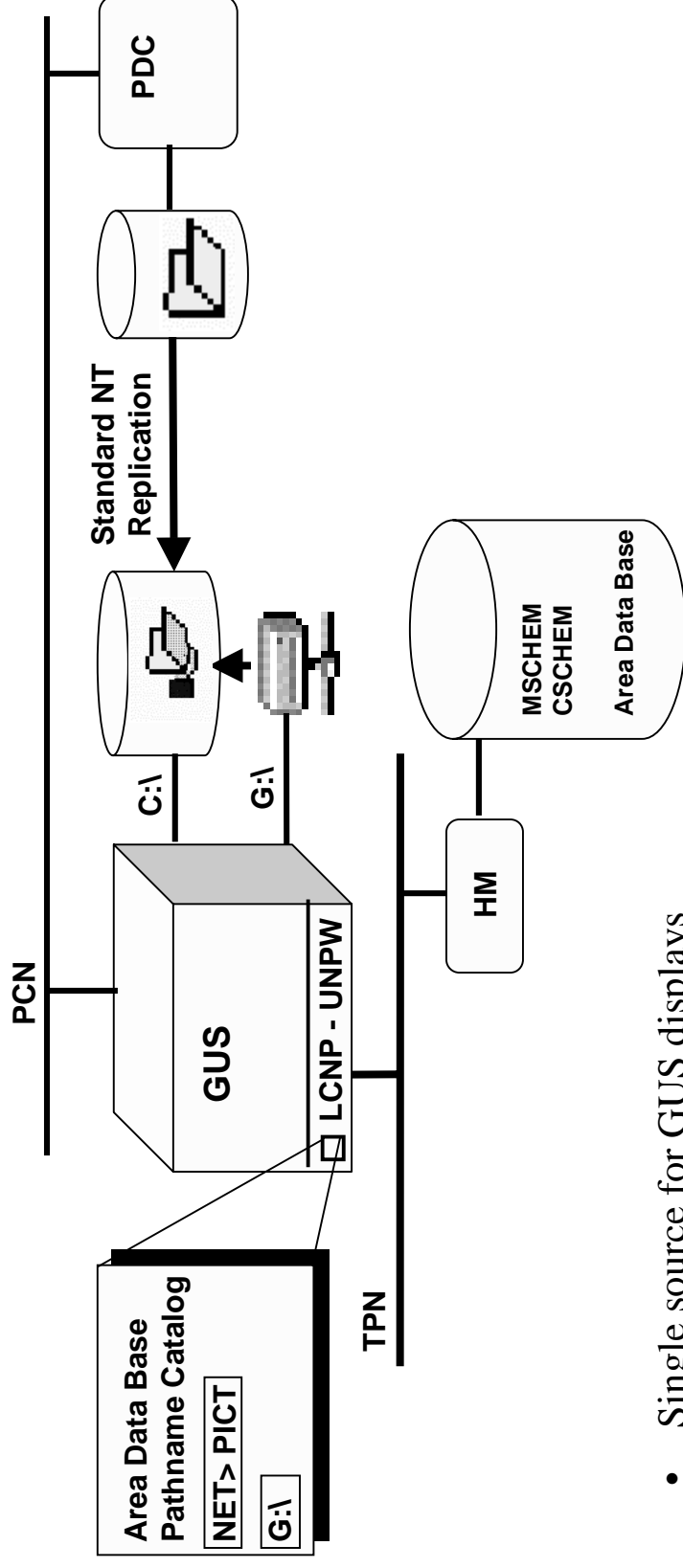
NativeWindow - gus10  
File View Alarms Displays Control History Engineering Access Help  
13 Sep 98 13:07:31  
PAGE 1 OF 2 ON-LINE  
UNIVERSAL STATION NODE  
NODE 24  
CONSOLE # 8 STATION # 8 DEFAULT AREA NORTH\_1  
CARTRIDGE DISC NUMBERS 1 2  
FLOPPY DISC NUMBERS  
PRINTER NUMBER  
TREND PEN NUMBER  
STATION DEFAULT ACCESS LEVEL VIEW OPER  
STATION DEFAULT LOAD PERSONALITY UP OPR  
STATION OPTIONS  
OPERATORS KEYBOARD YES NO  
TOUCH SCREEN YES NO  
ENGINEERS KB YES NO  
DELETE NODE  
MODIFY NODE  
F1=CHECK F3=SET OFFLINE F5=ABORT F9=PACK NCF F11=TAB  
F2=INSTALL F4=PRINT  
Ready

NativeWindow - gus10  
File View Alarms Displays Control History Engineering Access Help  
13 Sep 98 13:34:33  
PAGE 2 OF 2 ON-LINE  
UNIVERSAL STATION NODE  
NODE 24  
ENTER EXTERNAL LOAD MODULE NAMES & ASSOCIATED PERSONALITY-TYPES:  
NAME --- PERS. NAME --- PERS. NAME --- PERS. NAME --- PERS.  
ASCHEM UP  
CSCHEM UP  
UPBASE UP  
ADDITIONAL MODULE MEMORY (WORDS) OPR UP  
TOTAL (MODULES PLUS ADDITIONAL MEMORY) 66315  
MAXIMUM EXTERNAL MODULE MEMORY (WORDS) 68315  
FURTHER EXTERNAL DIRECTIVES? YES NO YES NO  
EXTERNAL CUSTOM SCHEMATIC MEMORY (KILOWORDS) 0  
F1=CHECK F3=SET OFFLINE F5=ABORT F7=NEXT ITEM F9=PACK NCF F11=TAB  
F2=INSTALL F4=PRINT  
Ready

- Maximum External Module Memory = Total + 10,000
- Total equals sum of:
  - CSCHEM 3695 YGOCX 21810
  - MSCHEM+CSCHEM 58666 GUSALA 31731
  - UPBASE 7649 GUSALAG 3056

## Install and Configure a TPS GUS Node

### Replication of GUS Displays

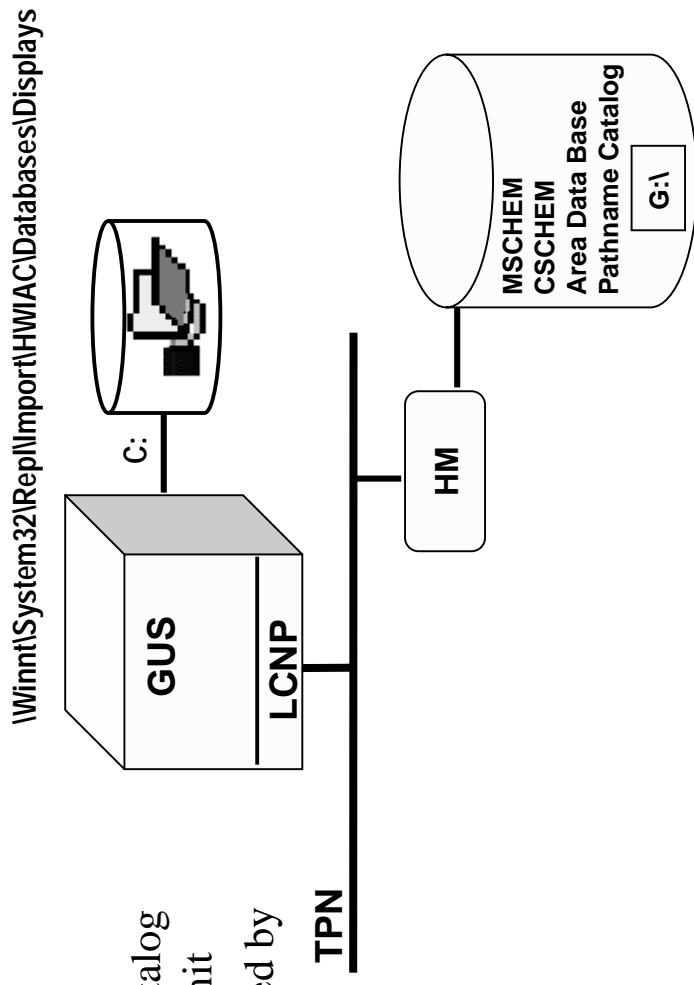


- Single source for GUS displays
- Call up GUS displays using the SCHEM key

## Install and Configure a TPS GUS Node

### Create Share Directory and Modify Area Pathname Catalog

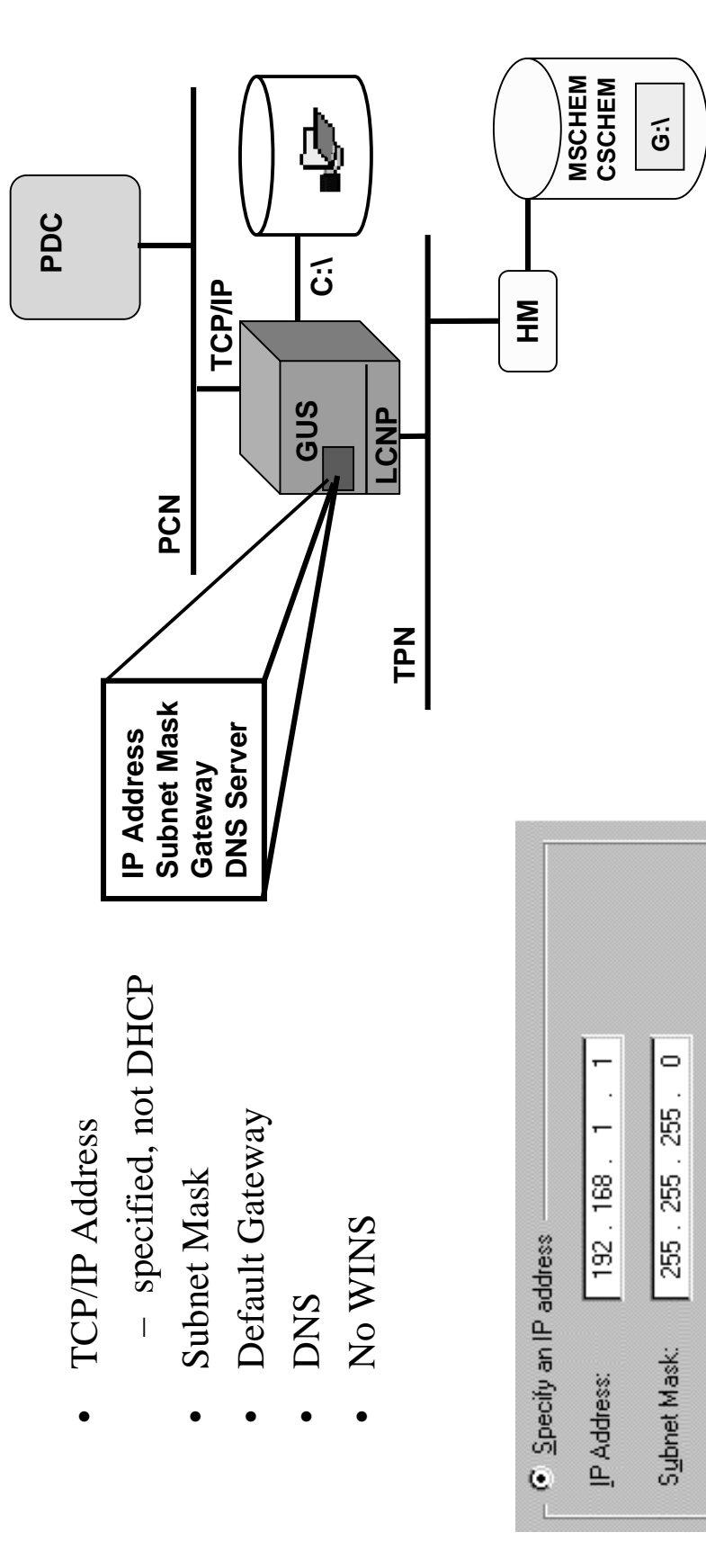
- Set up directory for GUS displays
  - Create Directory
  - Share Directory
- Area Data Base Pathname Catalog entries have a 14 character limit
- Virtual Drive (G:) to be created by operator.bat



## Install and Configure a TPS GUS Node

# Configure TCP/IP Address and Connect to Network

- TCP/IP Address
    - specified, not DHCP
  - Subnet Mask
  - Default Gateway
  - DNS
  - No WINS
- 
- The diagram illustrates a network setup. On the left, a PC is connected to a horizontal line labeled 'PCN'. This line is also connected to a box labeled 'GUS' (Group User System). The connection between the PCN and the GUS is labeled 'TCP/IP'. The GUS is connected to a cylinder labeled 'C:\' and a printer icon. A callout box with a black border points to the GUS and contains the following text: 'IP Address', 'Subnet Mask', 'Gateway', and 'DNS Server'.

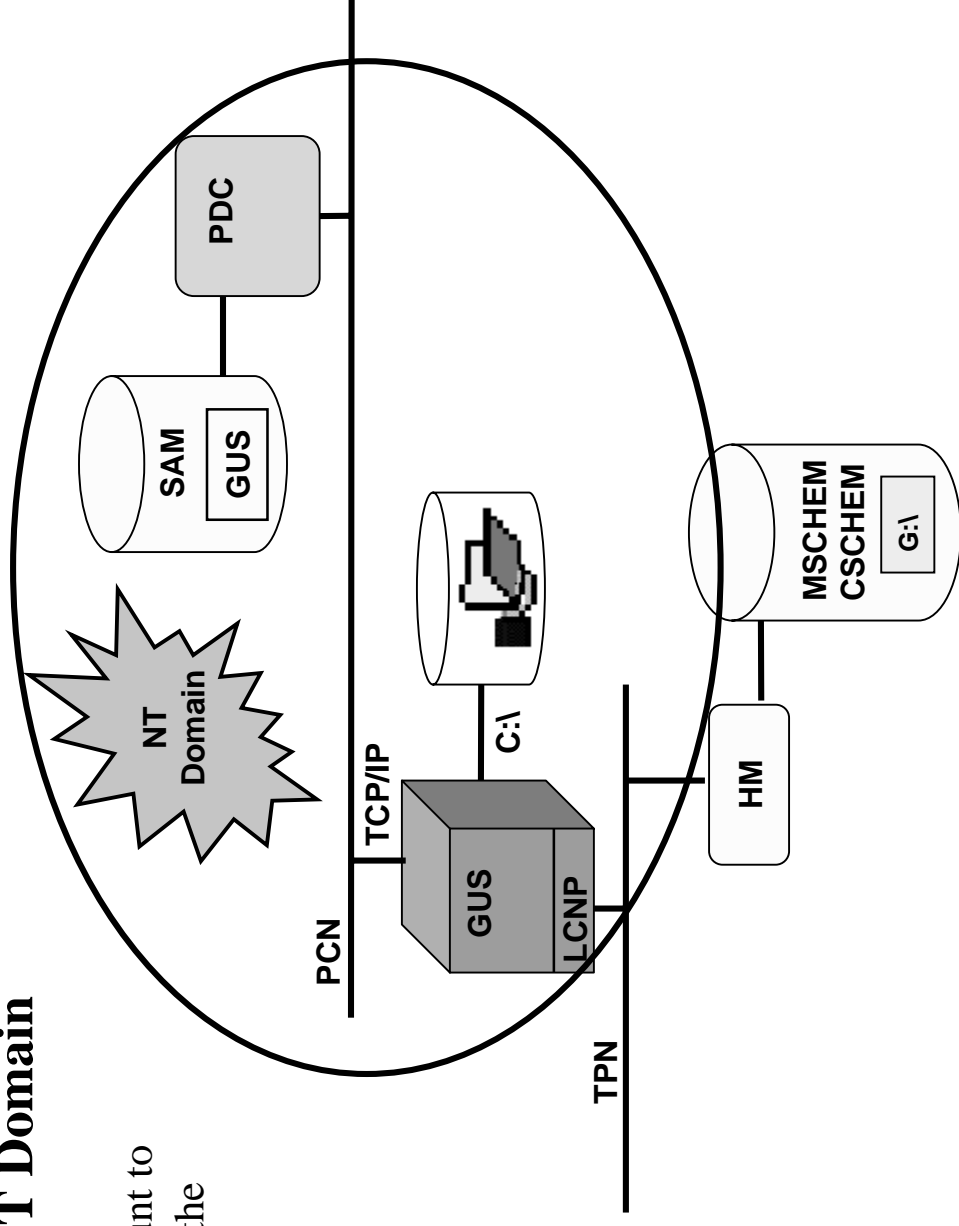


The screenshot shows the 'Specify an IP address' step of the Windows XP Network Setup Wizard. The computer name is 'HM'. It is connected to a network named 'MSCHEM' and 'CSCHEM'. The IP address is set to 192.168.1.1, the subnet mask to 255.255.255.0, and the default gateway is blank. A drive 'G:\' is also shown.

## Install and Configure a TPS GUS Node

### Add GUS to the NT Domain

Add the computer account to SAM on the PDC from the GUS workstation



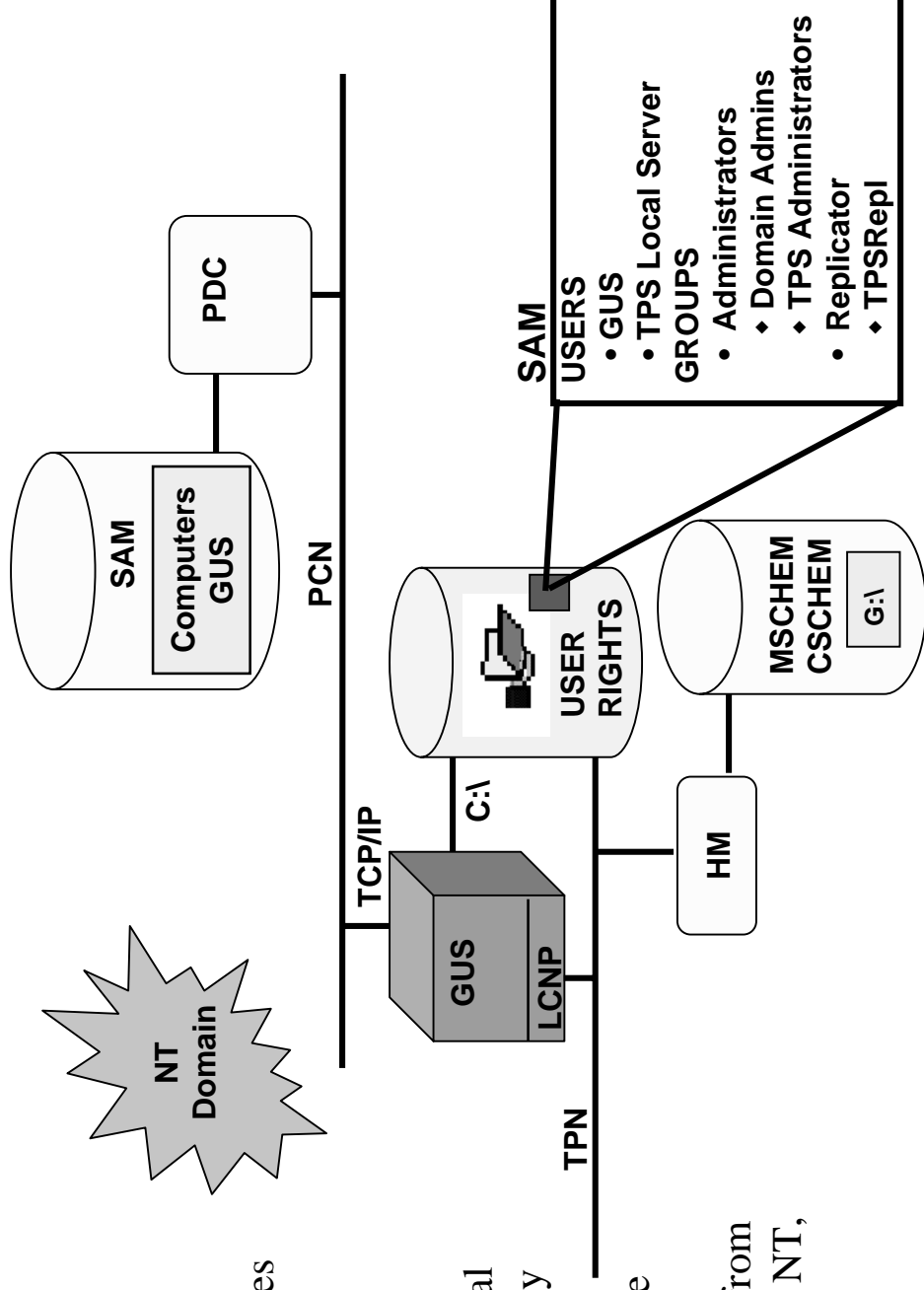
## Install and Configure a TPS GUS Node

### Setup Security

- Setup some security
- file permissions
  - some registry entries
  - user rights

As shipped from Honeywell

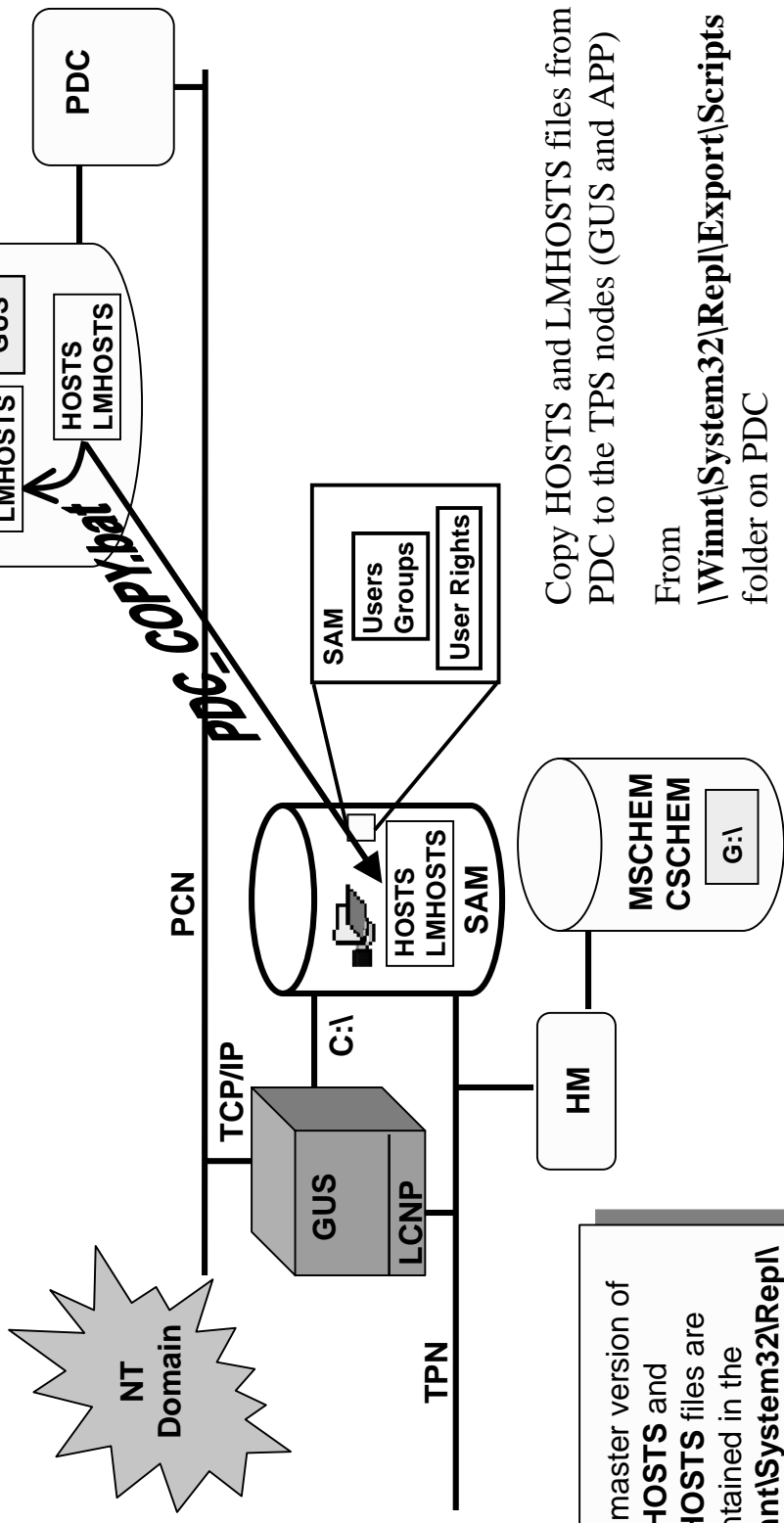
- GUS and TPS Local Server users already exist
- This tool adds these users in case the system is loaded “from scratch” (example: NT, then GUS)





## Install and Configure a TPS GUS Node

### Distribute the HOSTS and LMHOSTS Files



The master version of the **HOSTS** and **LMHOSTS** files are maintained in the **\Winnt\System32\Repl\Export\Scripts** folder on the PDC

Copy HOSTS and LMHOSTS files from PDC to the TPS nodes (GUS and APP)

From

**\Winnt\System32\Repl\Export\Scripts** folder on PDC

To **\Winnt\System32\Drivers\Etc** folders on all nodes

## Install and Configure a TPS GUS Node

### Install GUS Personality and Optional Software

