











8

7

6

5

4

3

0-0-5564W M7955 2

1

ALL DIMENSIONS ARE IN MILLIMETERS UNLESS OTHERWISE SPECIFIED. THIS DRAWING IS THE PROPERTY OF DIGITAL EQUIPMENT CORPORATION AND IS NOT TO BE REPRODUCED OR USED IN ANY MANNER WITHOUT THE WRITTEN PERMISSION OF DIGITAL EQUIPMENT CORPORATION.

L1

# LAYER 1

5012203C  
M001032  
M7055

D

CSMABCDEFGHIJKLMNRS

SIDE 1

E115 E114 E113 E112 E111 E110 E109 E108 E107 E106 E105 E104 E103 E102 E101 E100 MSV11-C LSI  
MOS MEMORY

C

B

A

D

C

B

A

DUA M7955-0-0 B

--	--	--	--	--	--	--	--	--	--

TITLE	MSV11-C	SIZE CODE	DUA	NUMBER	M7955-0-0	REV.	B
SCALE	2/1	SHEET	5	OF	9	DIST.	

8

7

6

5

4

3

2

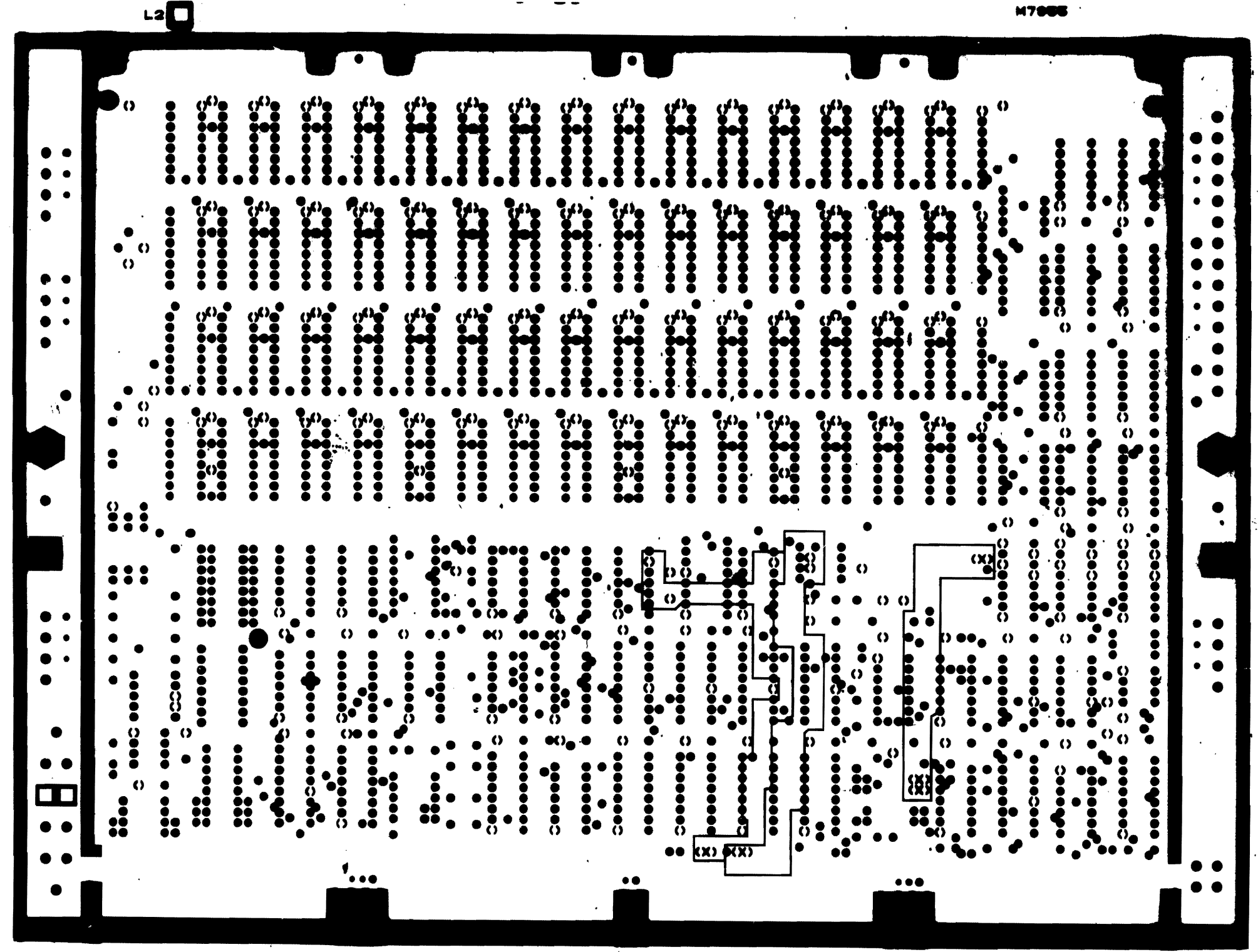
1

THIS DRAWING AND SPECIFICATIONS HEREIN ARE THE PROPERTY OF DIGITAL EQUIPMENT CORPORATION, AND SHALL NOT BE REPRODUCED, COPIED OR USED IN WHOLE OR IN PART, AT THE MANUFACTURE OF ANY PRODUCT, WITHOUT WRITTEN PERMISSION OF DIGITAL EQUIPMENT CORPORATION.

9-0-5564W 2

D  
C  
B  
A

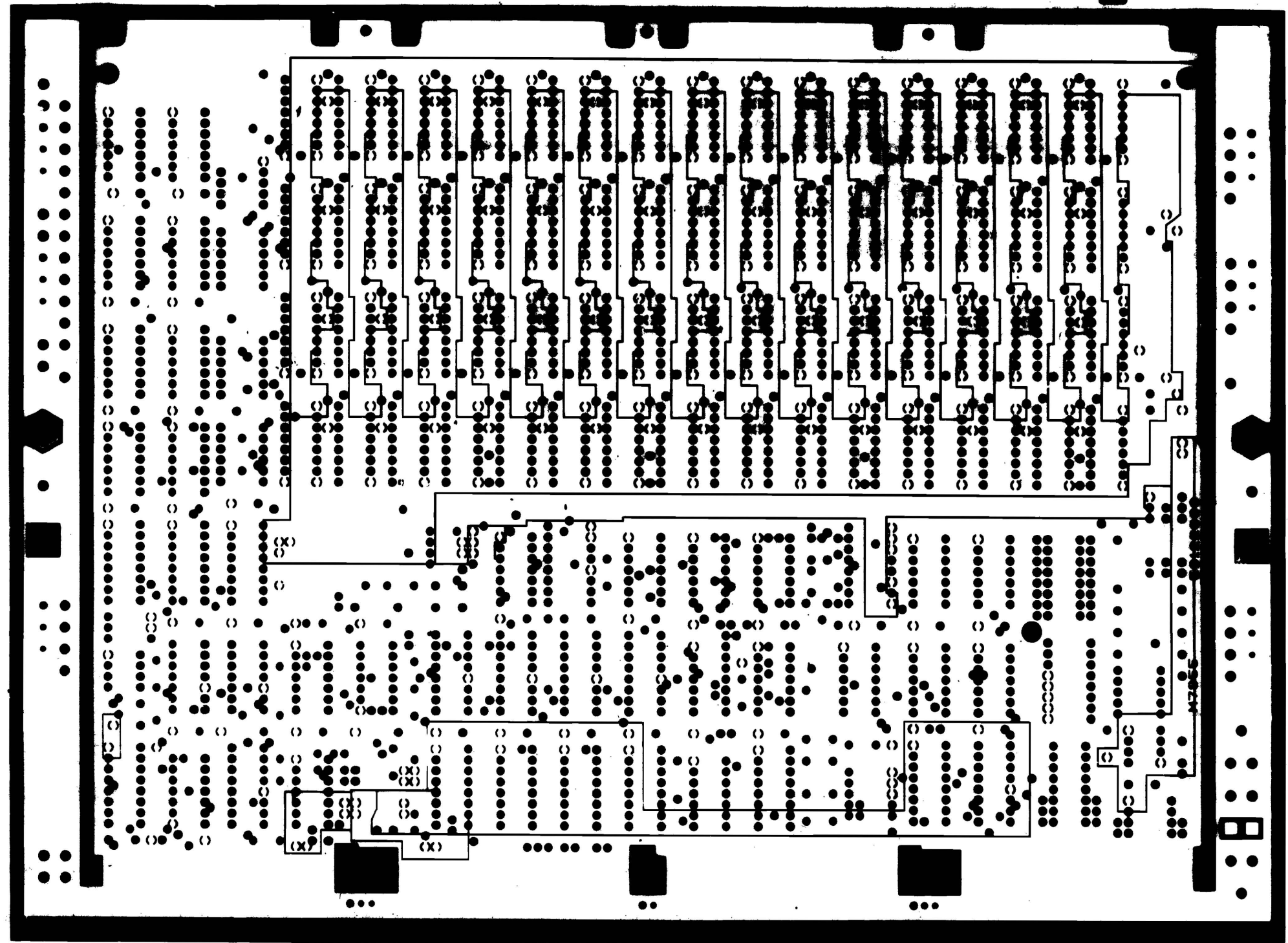
D  
C  
B  
A




TITLE	MSVII-C LSI MOS MEMORY	SIZE CODE	D U/A	NUMBER	M 7955-0-0	REV.	B
SCALE	2/1	SHEET	6	OF	9	DIST	

ALL RIGHTS RESERVED. NO PART OF THIS DOCUMENT IS TO BE REPRODUCED OR TRANSMITTED IN ANY FORM OR BY ANY MEANS, ELECTRONIC OR MECHANICAL, INCLUDING PHOTOCOPYING, RECORDING, OR BY ANY INFORMATION STORAGE AND RETRIEVAL SYSTEM.

DUA M7955-0-0 2



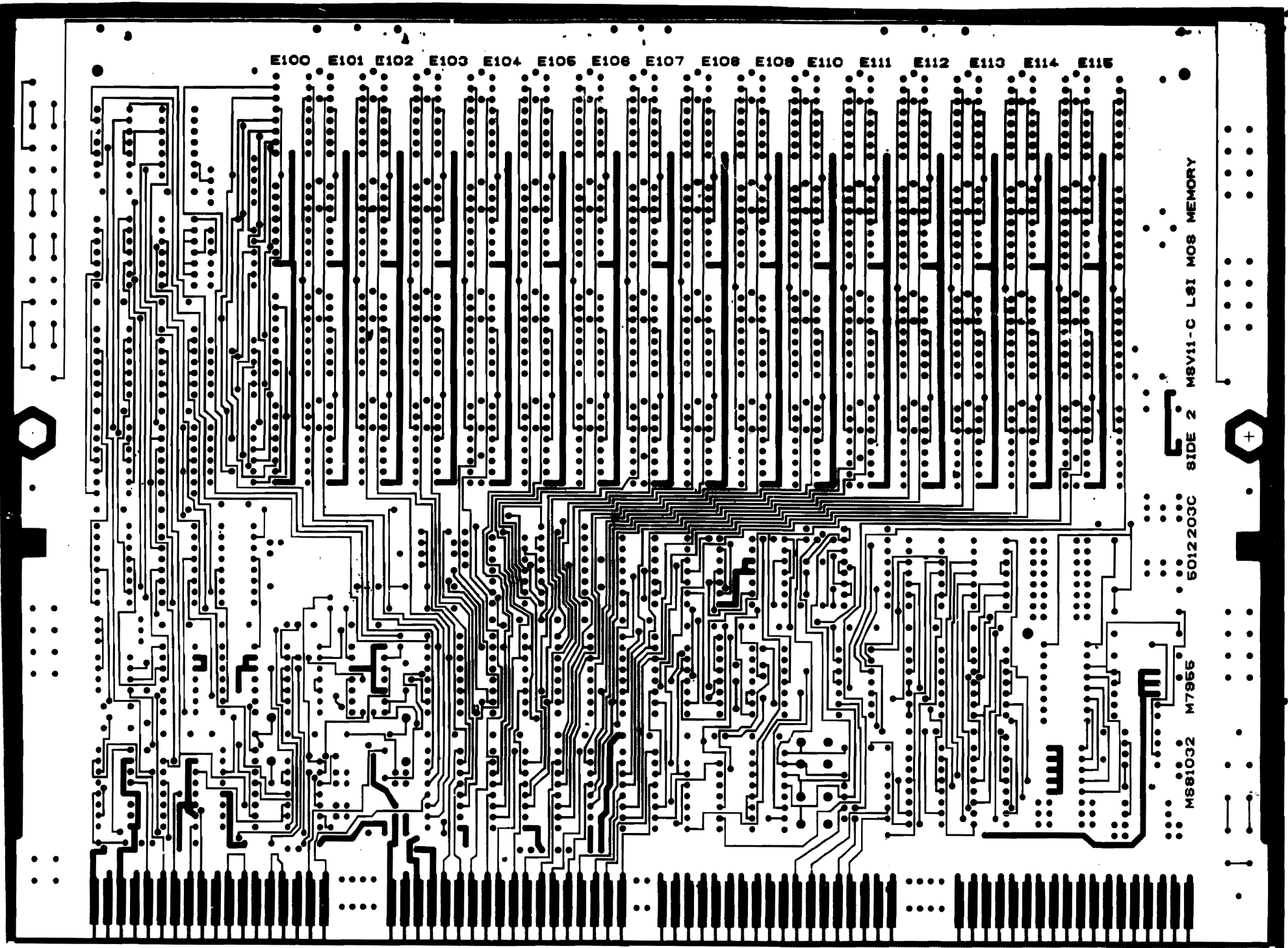
D  
C  
B  
A

D  
C  
B  
A

DUA M7955-0-0 B

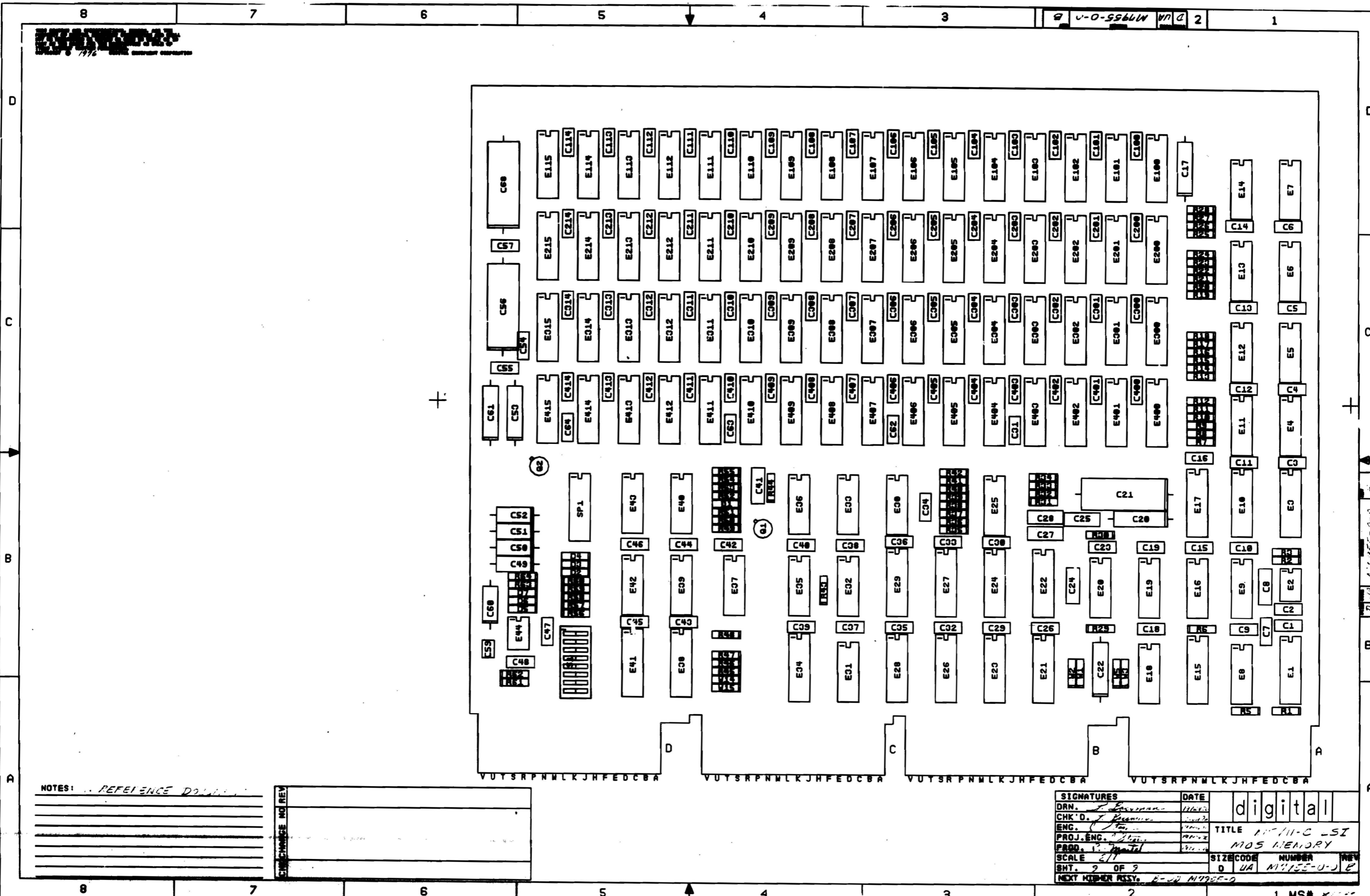
MSV11-C LSI		SIZE CODE	NUMBER	REV.
MOS MEMORY		DUA	M7955-0-0	B
2/1	SHEET 7 OF 9	DATE		

ALL RIGHTS RESERVED. THIS DRAWING IS THE PROPERTY OF THE COMPANY AND IS NOT TO BE REPRODUCED OR TRANSMITTED IN ANY FORM OR BY ANY MEANS, ELECTRONIC OR MECHANICAL, INCLUDING PHOTOCOPYING, RECORDING, OR BY ANY INFORMATION STORAGE AND RETRIEVAL SYSTEM.



8		7		6		5		4		3		2		1	
MSVII-C LSI MOS MEMORY												DATE CODE	REVISION	REV	
2/1												D/UA	M7955-0-0	0	
SHEET 8 OF 9												DIST			

D/UA M7955-0-0



NOTES: REFERENCE DOLLAR

CHANGE NO	REV

SIGNATURES		DATE
DRN.	<i>[Signature]</i>	11/23/72
CHK'D.	<i>[Signature]</i>	11/23/72
ENG.	<i>[Signature]</i>	11/23/72
PROJ. ENG.	<i>[Signature]</i>	11/23/72
PROD.	<i>[Signature]</i>	11/23/72
SCALE	1:1	
SHT.	9 OF 9	
NEXT HIGHER ASSY. B-11 M755-0		

digital

TITLE M755-0-0 LSI MOS MEMORY

SIZE CODE 0 NUMBER 0

# DIGITAL EQUIPMENT CORPORATION

## PARTS LIST

MADE BY *S. BELTZER* CHECKED *J. K. Kelly* SECTION *1*  
 DATE *10 OCT 76* DATE *10/15/76*  
 ENG *J. Stearns* PROD *R. Mente* ISSUED SECTION *1*  
 DATE *11/18/76* DATE *11/19/76*

### QUANTITY / VARIATION

### NOTES:

\*M7955-AA = M7955-YA, OR M7955-YE  
 \*M7955-AB = M7955-YB, OR M7955-YF  
 \*M7955-AC = M7955-YC, OR M7955-YH  
 \*M7955-AD = M7955-YD, OR M7955-YJ

ITEM NO.	DRAWING NO.	PART NO.	DESCRIPTION	*M7955-AA		*M7955-AB		*M7955-AC		*M7955AD		REF DESIGNATION
				M7955-YA	M7955-YE	M7955-YB	M7955-YF	M7955-YC	M7955-YH	M7955-YD	M7955-YJ	
	D-UA-M7955-0-0		UNIT ASSY	REF	REF	REF	REF	REF	REF	REF	REF	
	D-CS-M7955-0-1		CIRCUIT SCHEMATIC	REF	REF	REF	REF	REF	REF	REF	REF	
	B-ME-M7955-0-6		MODULE HISTORY	REF	REF	REF	REF	REF	REF	REF	REF	
1	D-MD-5012203-0-0	5012203	ETCHED CIRCUIT BOARD	1	1	1	1	1	1	1	1	
2		10-00016	CAP 100 PF 100V 5% DM	2	2	2	2	2	2	2	2	C25,C41
3		10-01610-01	CAP .01MF 100V DISC	28	28	28	28	28	28	28	28	C2 Thru C7,C9 Thru C16, C18,C19,C23, C30,C33,C36 Thru C40,C42,C44,C46,C48
4		10-02627	CAP 2.2MF 20V 10% TANT	5	5	5	5	5	5	5	5	C49,C50,C51,C52,C60
5		10-10274	CAP .22MF 50V CER	.	.	.	.	.	.	76	76	C26,C29,C31,C32,C34,C35,C43,C45,C47,C54, C55,C57,C62 Thru C64,C100 Thru C114, C200 Thru C214,C300 Thru C314,C400 Thru C414,C1
				.	.	.	.	61	61	.	.	C26,C29,C31,C32,C34,C35,C43,C45,C47,C54, C55,C57,C62 Thru C64,C200 Thru C214, C300 Thru C314,C400 Thru C414,C1
				46	46	46	46	.	.	.	.	C26,C29,C31,C32,C34,C35,C43,C45,C47, C54,C55,C57,C62 Thru C64,C300 Thru C314, C400 Thru C414,C1
6		10-11740	CAP 5600PF 50V, 10% CER	1	1	1	1	1	1	1	1	C59
7		10-12084-01	CAP 8MF 25V AL.EL.	5	5	5	5	5	5	5	5	C17,C20,C22,C53,C61
8		10-12121	CAP 220PF 100V 1% DM	4	4	4	4	4	4	4	4	C8,C24,C27,C28
9		10-12219	CAP 47MF 30V AL.EL.	3	3	3	3	3	3	3	3	C21, C56,C68

E.C.O. NO. \_\_\_\_\_

THIS DRAWING AND SPECIFICATIONS, HEREIN, ARE THE PROPERTY OF DIGITAL EQUIPMENT CORPORATION AND SHALL NOT BE REPRODUCED OR COPIED OR USED IN WHOLE OR IN PART AS THE BASIS FOR THE MANUFACTURE OR SALE OF ITEMS WITHOUT WRITTEN PERMISSION. COPYRIGHT © 1976 DIGITAL EQUIPMENT CORPORATION.

TITLE: **MSVII-C LSI MOS MEMORY**

ASSY NO.: **D-UA-M7955-0-0**

SHEET **1** OF **5**

SIZE: **B** CODE: **PL** NUMBER: **M7955-0-0** REV: **B**

EN-01140A-16-R278(326) DRB 125 INSERTION PARTS LIST DATA BASE REV **B**

# DIGITAL EQUIPMENT CORPORATION

## PARTS LIST

MADE BY *S. BELTZER* CHECKED *L. R. Jolly* SECTION *1*  
 DATE *10 OCT 76* DATE *right*  
 ENG *J. S. Johnson* PROD *R. Martel* ISSUED SECTION *1*  
 DATE *11/18/76* DATE *11/19/76*

### QUANTITY / VARIATION

**NOTES:**  
 \*M7955-BA = M7955-YA, or M7955-YE  
 \*M7955-BB = M7955-YB, or M7955-YF  
 \*M7955-BC = M7955-YC, or M7955-YH  
 \*M7955-AD, = M7955-YC, or M7955-YJ

ITEM NO.	DRAWING NO.	PART NO.	DESCRIPTION	QUANTITY / VARIATION								REF DESIGNATION
				M7955-AA	M7955-AB	M7955-AC	M7955-AD	M7955-BA	M7955-BB	M7955-BC	M7955-BD	
10		11-05275	DIODE D672	6	6	6	6	6	6	6	6	D1, D2, D3, D4, D5, D6
11		11-10994	DIODE 1N751A 5.1V 5% ZENER	1	1	1	1	1	1	1	1	D7
12		12-0164-04	SWITCH 8 SPST DIP SWITCH	1	1	1	1	1	1	1	1	S1
13		13-00247	RES. 120, 1/4W 5% CC	2	2	2	2	2	2	2	2	R63, R64
14		13-00295	RES. 330, 1/4W 5% CC	1	1	1	1	1	1	1	1	R51
15		13-00365	RES. 1K, 1/4W 5% CC	5	5	5	5	5	5	5	5	R37, R42, R43, R49, R50
16		13-00447	RES. 4.7K 1/4W 5% CC	11	11	11	11	11	11	11	11	R6, R29, R45, R46, R48, R56 thru R60
17		13-00479	RES. 10K, 1/4W 5% CC	2	2	2	2	2	2	2	2	R1, R5
18		13-00271	RES. 220, 1/4W 5% CC	1	1	1	1	1	1	1	1	R52
19		13-02124	RES. 18, 1/4W 5% CC	26	26	26	26	26	26	26	26	R8, Thru R28, R30, R31, R44, R53
20		13-02644	RES. 226, 1/4W 1% MF	1	1	1	1	1	1	1	1	R39
21		13-02871	RES. 1.21K, 1/4W 1% MF	2	2	2	2	2	2	2	2	R32, R61
22		13-02941	RES. 14.7K 1/4W 1% MF	2	2	2	2	2	2	2	2	R33, R54
23		13-02956	RES. 196, 1/4W 1% MF	1	1	1	1	1	1	1	1	R41
24		13-02957	RES. 121, 1/4W 1% MF	1	1	1	1	1	1	1	1	R35
25		13-03044	RES. 100K, 1/4W 1% MF	1	1	1	1	1	1	1	1	R3
26		13-03064	RES. 75.0 1/4W 1% MF	1	1	1	1	1	1	1	1	R40
27		13-03148	RES. 31.6 1/4W 1% MF	1	1	1	1	1	1	1	1	R36

REC'D NO. *170* / *171* / *172* / *173* / *174* / *175* / *176* / *177* / *178* / *179* / *180* / *181* / *182* / *183* / *184* / *185* / *186* / *187* / *188* / *189* / *190* / *191* / *192* / *193* / *194* / *195* / *196* / *197* / *198* / *199* / *200*

<p>THIS DRAWING AND SPECIFICATIONS HEREIN ARE THE PROPERTY OF DIGITAL EQUIPMENT CORPORATION AND SHALL NOT BE REPRODUCED OR COPIED OR USED IN WHOLE OR IN PART AS THE BASIS FOR THE MANUFACTURE OR SALE OF ITEMS WITHOUT WRITTEN PERMISSION. COPYRIGHT © 1976 DIGITAL EQUIPMENT CORPORATION</p>	<p>TITLE <b>MSV1-C LSI MOS MEMORY</b></p>	<p>ASSY NO. <b>D-UA-M7955-B-6</b></p>	<p>SIZE <b>B</b></p>	<p>CODE <b>PL</b></p>	<p>NUMBER <b>M7955-0-0</b></p>	<p>REV. <b>B</b></p>
<p>EN-01140A-16-R270J26 DRB 125</p>		<p>SHEET <b>2</b> OF <b>5</b></p>		<p>INSERTION PARTS LIST DATA BASE REV B</p>		

# DIGITAL EQUIPMENT CORPORATION

## PARTS LIST

MADE BY <i>S. Carter</i>	CHECKED <i>J. A. Dwyer</i>	SECTION <i>1</i>
DATE <i>10 Oct 76</i>	DATE <i>11/18/76</i>	ISSUED SECTION <i>1</i>
ENG <i>J. Stephens</i>	PROD <i>R. Martel</i>	
DATE <i>11/18/76</i>	DATE <i>11/19/76</i>	

### QUANTITY / VARIATION

#### NOTES:

\*M7955-AA = M7955-YA, OR M7955-YB  
 \*M7955-AB = M7955-YB, OR M7955-YT  
 \*M7955-AC = M7955-YC, OR M7955-YE  
 \*M7955-AD = M7955-YD, OR M7955-YJ

ITEM NO.	DRAWING NO.	PART NO.	DESCRIPTION	*M7955-AA		*M7955-AB		*M7955-AC		*M7955-AD		REF DESIGNATION
				YA	YE	YB	YT	YC	YE	YD	YJ	
28		13-03303	RES. 2.61K, 1/4W 1% MF	2	2	2	2	2	2	2	2	R55, R62
29		13-03313	RES. 12.1K, 1/4W 1% MF	1	1	1	1	1	1	1	1	R2
30		13-04863	RES. 316, 1/4W 1% MF	1	1	1	1	1	1	1	1	R38
31		13-04870	RES. 6.81K, 1/4W 1% MF	1	1	1	1	1	1	1	1	R34
32												
33		15-03100	TRANSISTOR DEC 3009B NPN	1	1	1	1	1	1	1	1	Q1
34		15-03409-01	TRANSISTOR DEC 6534B PNP	1	1	1	1	1	1	1	1	Q2
35		19-09054	IC 7493	2	2	2	2	2	2	2	2	E9, E16
36		19-09932-01	IC 7483A	1	1	1	1	1	1	1	1	E41
37		19-10268	IC 75107	2	2	2	2	2	2	2	2	E25, E30
38		19-10532	IC 74800	5	5	5	5	5	5	5	5	E4, E7, E18, E35, E42
39		19-10533	IC 74803	1	1	1	1	1	1	1	1	E33
40		19-10536	IC 74810	2	2	2	2	2	2	2	2	E19, E37
41		19-10539	IC 74820	1	1	1	1	1	1	1	1	E31
42		19-10546	IC 748140	1	1	1	1	1	1	1	1	E14
43		19-10547	IC 748153	3	3	3	3	3	3	3	3	E3, E10, E17
44		19-10544	IC 74874	3	3	3	3	3	3	3	3	E32, E36, E40
45		19-11469	IC 8640	2	2	2	2	2	2	2	2	E8, E20

ECO. NO. *7*

THIS DRAWING AND SPECIFICATIONS, HEREIN, ARE THE PROPERTY OF DIGITAL EQUIPMENT CORPORATION AND SHALL NOT BE REPRODUCED OR COPIED OR USED IN WHOLE OR IN PART AS THE BASIS FOR THE MANUFACTURE OR SALE OF ITEMS WITHOUT WRITTEN PERMISSION. COPYRIGHT © 1976 DIGITAL EQUIPMENT CORPORATION.	TITLE <b>MSVII-C LSI MOS MEMORY</b>	ASSY NO. <b>D-UA-M7955-β-φ</b>	SIZE <b>B</b>	CODE <b>PL</b>	NUMBER <b>M7955-0-0</b>	REV. <b>B</b>
EN-01140A-16-R276(325) DRB 125		SHEET <b>3</b> OF <b>5</b>		INSERTION PARTS LIST DATA BASE REV <b>B</b>		

# DIGITAL EQUIPMENT CORPORATION

## PARTS LIST

MADE BY <i>S. BELTNER</i>	CHECKED <i>J. H. Dwyer</i>	SECTION <i>1</i>
DATE <i>10 Oct 76</i>	DATE <i>11/10/76</i>	ISSUED SECTION <i>1</i>
ENG <i>J. Stigman</i>	PROG <i>R. Mar-Fal</i>	
DATE <i>11/15/76</i>	DATE <i>11/19/76</i>	

### QUANTITY / VARIATION

### NOTES:

- \*M7955-AA = M7955-YA, OR M7955-YE
- \*M7955-AB = M7955-YB, OR M7955-YF
- \*M7955-AC = M7955-YC, OR M7955-YH
- \*M7955-AD = M7955-YD, OR M7955-YJ

ITEM NO.	DRAWING NO.	PART NO.	DESCRIPTION	*M7955-AA		*M7955-AB		*M7955-AC		*M7955-AD		REF DESIGNATION
				M7955-YA	M7955-YE	M7955-YB	M7955-YF	M7955-YC	M7955-YH	M7955-YD	M7955-YJ	
46		19-11579	IC 8641	5	5	5	5	5	5	5	5	E1, E21, E23, E26, E28
47		19-11675	IC 748138	1	1	1	1	1	1	1	1	E30
48		19-11944	IC LM555	2	2	2	2	2	2	2	2	E2, E44
49		19-11983	IC 748133	1	1	1	1	1	1	1	1	E34
50		19-12068	IC 74128	3	3	3	3	3	3	3	3	E5, E12, E13
51		19-12388	IC 74802	2	2	2	2	2	2	2	2	E39, E43
52		19-12649	IC 74LS75	5	5	5	5	5	5	5	5	E15, E22, E24, E27, E29
53		19-12746	IC 74S37	2	2	2	2	2	2	2	2	E6, E11
54		21-12726-00	IC MK4096 16 PIN RAM	.	.	.	.	.	.	64	.	E100, thru E115, E200 thru 215, E300 thru E315, E400 thru E415
				.	.	.	.	48	.	.	.	E200 thru E215, E300 thru E315, E400 thru E415
				.	.	32	.	.	.	.	.	E300 thru E315, E400 thru E415
				16	.	.	.	.	.	.	.	E400 thru E415
55		21-12959-01	IC 4096 16 PIN RAM	.	.	.	.	.	.	.	64	SAME AS M7955-YD
				.	.	.	.	48	.	.	.	SAME AS M7955-YC
				.	.	32	.	.	.	.	.	SAME AS M7955-YB
				.	16	.	.	.	.	.	.	SAME AS M7955-YA

E.C.O. NO. *7055-232*

THIS DRAWING AND SPECIFICATIONS, HEREIN, ARE THE PROPERTY OF DIGITAL EQUIPMENT CORPORATION AND SHALL NOT BE REPRODUCED OR COPIED OR USED IN WHOLE OR IN PART AS THE BASIS FOR THE MANUFACTURE OR SALE OF ITEMS WITHOUT WRITTEN PERMISSION. COPYRIGHT © 1976, DIGITAL EQUIPMENT CORPORATION.	TITLE <b>MSVII-C LSI MOS MEMORY</b>	ASSY NO. <b>D-UA-M7955-0-0</b>	SIZE <b>B</b>	CODE <b>PL</b>	NUMBER <b>M7955-0-0</b>	REV. <b>B</b>
EN-01140A-16-R278(324) DRB 125		SHEET <b>4</b> OF <b>5</b>		INSERTION PARTS LIST DATA BASE REV <b>B</b>		

# DIGITAL EQUIPMENT CORPORATION

## PARTS LIST

MADE BY <i>S. BELTEER</i>	CHECKED <i>for R. Darby</i>	SECTION <i>1</i>
DATE <i>10 OCT 96</i>	DATE <i>11/18/96</i>	ISSUED SECTION <i>1</i>
ENG <i>J. Stinson</i>	PROD <i>R. Martel</i>	
DATE <i>11/18/96</i>	DATE <i>11/19/96</i>	

### QUANTITY / VARIATION

### NOTES:

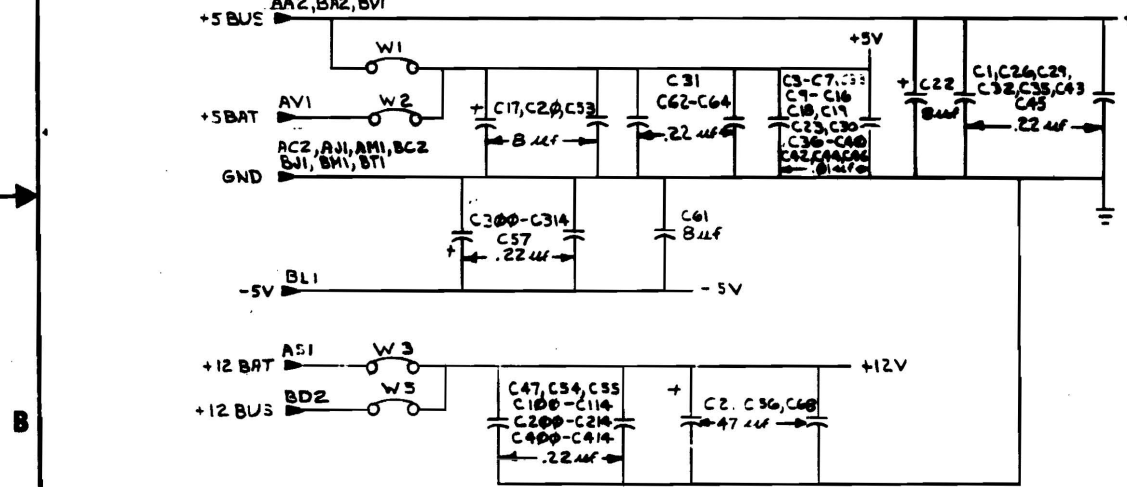
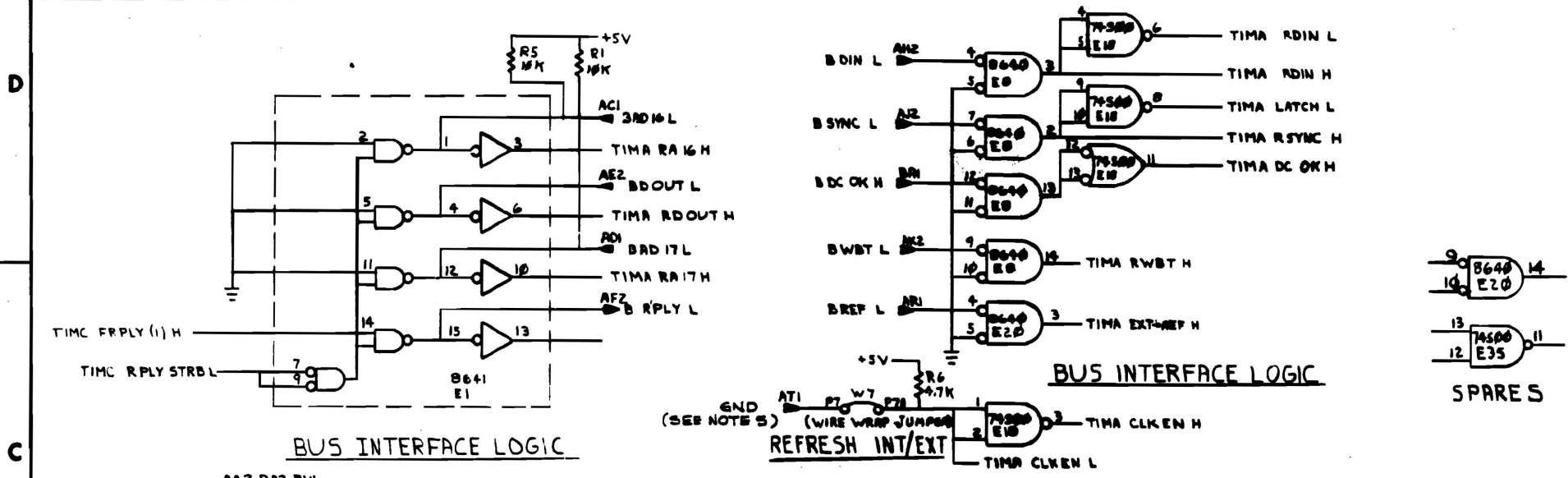
\*M7955-AA = M7955-YA, or M7955-YE  
 \*M7955-AB = M7955-YB, or M7955-YF  
 \*M7955-AC = M7955-YC, or M7955-YH  
 \*M7955-AD = M7955-YD, or M7955-YJ

ITEM NO.	DRAWING NO.	PART NO.	DESCRIPTION	*M7955-AA		*M7955-AB		*M7955-AC		*M7955-AD		REF DESIGNATION
				YA	YE	YB	YF	YC	YH	YD	YJ	
56		90-06732-00	EYELET, HANDLE	0	0	0	0	0	0	0	0	
57		90-08213-00	STANDOFF SPACER	1	1	1	1	1	1	1	1	
58		90-09041-01	SCREW NYLON 6-32 x .250	1	1	1	1	1	1	1	1	
59		90-09185-00	JUMPER INSULATED	6	6	6	6	6	6	6	6	W1, W3, W5, W14, W15, W2
60		90-09149-00	WIRE WRAP PINS	12	12	12	12	12	12	12	12	
61		91-05740-55	WIRE, GRN, INSULATED #30 AWG (LENGTH AS REQUIRED, WITH 3/4" ± 1/8" OF INSULATION.)	3	3	.	.	.	.	.	.	W6, W7, W4
				.	.	4	4	.	.	.	.	W6, W7, W4, W8
				.	.	.	.	5	5	.	.	W6, W7, W4, W12, W8
				.	.	.	.	.	.	6	6	W6, W7, W4, W8, W12, W16
62		74-13826-01	HANDLE R.H.	1	1	1	1	1	1	1	1	
63		74-13826-00	HANDLE L.H.	1	1	1	1	1	1	1	1	

E.C.O. NO. *[Faint stamp]*

THIS DRAWING AND SPECIFICATIONS, HEREIN, ARE THE PROPERTY OF DIGITAL EQUIPMENT CORPORATION AND SHALL NOT BE REPRODUCED OR COPIED OR USED IN WHOLE OR IN PART AS THE BASIS FOR THE MANUFACTURE OR SALE OF ITEMS WITHOUT WRITTEN PERMISSION. COPYRIGHT © 1976 DIGITAL EQUIPMENT CORPORATION	TITLE <b>MSVII-C LSI MOS MEMORY</b>	ASSY NO. <b>D-UA-M7955-0-0</b>	SIZE <b>B</b>	CODE <b>PL</b>	NUMBER <b>M7955-0-0</b>	REV. <b>B</b>
		SHEET <b>5</b> OF <b>5</b>		INSERTION PARTS LIST DATA BASE REV B		

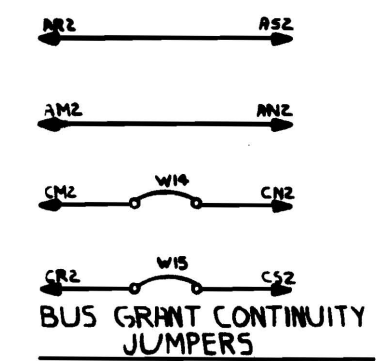
THIS DRAWING AND SPECIFICATIONS, HEREIN ARE THE PROPERTY OF DIGITAL EQUIPMENT CORPORATION AND SHALL NOT BE REPRODUCED OR TRANSMITTED IN ANY FORM OR BY ANY MEANS, ELECTRONIC OR MECHANICAL, INCLUDING PHOTOCOPYING, RECORDING, OR BY ANY INFORMATION STORAGE AND RETRIEVAL SYSTEM, WITHOUT PERMISSION IN WRITING FROM DIGITAL EQUIPMENT CORPORATION.



NOTES:

- OPTION DESIGNATION:  
 M7955-AA=M7955-YA OR M7955-YE  
 M7955-AB=M7955-YB OR M7955-YF  
 M7955-AC=M7955-YC OR M7955-YH  
 M7955-AD=M7955-YD OR M7955-YJ
- ALL 8641 BUS REC/DR PLUS 7483A ADDER AND 745138 DECODER ARE POWERED BY +5 BUS. ALL OTHER CIRCUITS GO TO +5V AS SELECTED BY W1 & W2.
- W1, W2, W3, W5, W14, W15 ARE MACHINE INSERTABLE JUMPERS. W4, W6, W7, W8, W12, W16 ARE WIRE WRAP JUMPERS.
- ALL BDAL-XX CONNECTIONS ARE BI-DIRECTIONAL LINES
- DURING MANUFACTURING TEST, GROUND MAY BE REMOVED

NOT USED REF D:  
 C100-C114, C200-C214 W4, W12, W16  
 C100-C114, C200-C214, W12, W16  
 C100-C114, W16



W6 W7 REFRESH OPTIONS

IN	IN	INTERNAL REFRESH WITH NO B RPLY
IN	OUT	EXTERNAL REFRESH WITH NO B RPLY
OUT	IN	ILLEGAL
OUT	OUT	EXTERNAL REFRESH WITH B RPLY

REFRESH SELECTION

M7955 VARIATIONS JUMPERS -AA -AB -AC -AD

W4	1	1	1	1
W8	0	1	1	1
W12	0	0	1	1
W16	0	0	0	1

ALL JUMPERS NOTED AS 0 MUST NOT BE INSTALLED

IC PIN LOCATIONS

IC TYPE	END	+5	+12
555 @ E2	1	B	B
555 @ E44	1	B	B
7493	10	5	
7483A	12	5	
74LS75	12	5	
8640	1	B	
OTHER 16 PIN I.C.'S	8	16	
DT-ER, 14 PIN I.C.'S	7	14	

STARTING ADDRESS SWITCH S1 SETTINGS

STARTING ADDRESS	-1	-2	-3	-4	-5
0	1	1	1	1	1
4K	0	1	1	1	1
8K	1	0	1	1	1
12K	0	0	1	1	1
16K	1	1	0	1	1
20K	0	1	0	1	1
24K	1	0	0	1	1
28K	0	0	0	1	1
32K	1	1	1	0	1
36K	0	1	1	0	1
40K	1	0	1	0	1
44K	0	0	1	0	1
48K	1	1	0	0	1
52K	0	1	0	0	1
56K	1	0	0	0	1
60K	0	0	0	0	1
64K	1	1	1	1	0
68K	0	1	1	1	0
72K	1	0	1	1	0
76K	0	0	1	1	0
80K	1	1	0	1	0
84K	0	1	0	1	0
88K	1	0	0	1	0
92K	0	0	0	1	0
96K	1	1	1	0	0
100K	0	1	1	0	0
104K	1	0	1	0	0
108K	0	0	1	0	0
112K	1	1	0	0	0
116K	0	1	0	0	0
120K	1	0	0	0	0
124K	0	0	0	0	0

EXCEPT M7955-AD  
 EXCEPT M7955-AC & AD  
 EXCEPT M7955-AB, AC, & AD

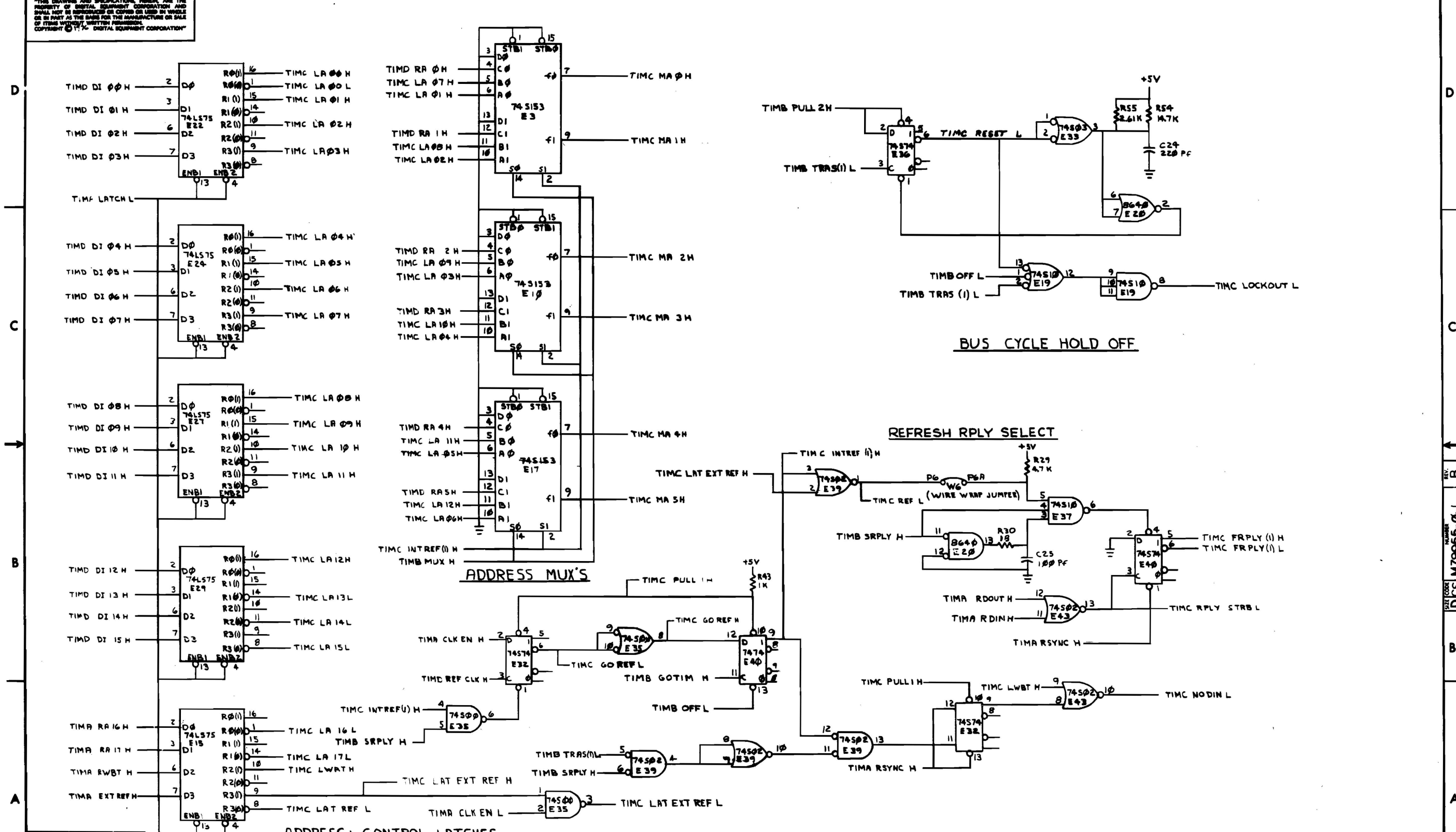
OVER LAPPING IS NOT ALLOWED IN ANY PERIPHERAL PAGE

REV	DATE	BY	CHKD

DRN	1/10/76	FIRST USED ON	MSV11-C
CHK'D	1/10/76	TITLE	MSV11-C MOS MEMORY, LSI (TIMA)
ENG.	1/10/76	SIZE CODE	D
PROD. ENG.	1/10/76	NUMBER	M7955-0-1
PROD. R.	1/10/76	REV.	B
NEXT HIGHER AUTH.		SCALE	
B-DR-M7955-0		SHEET	1 OF 8

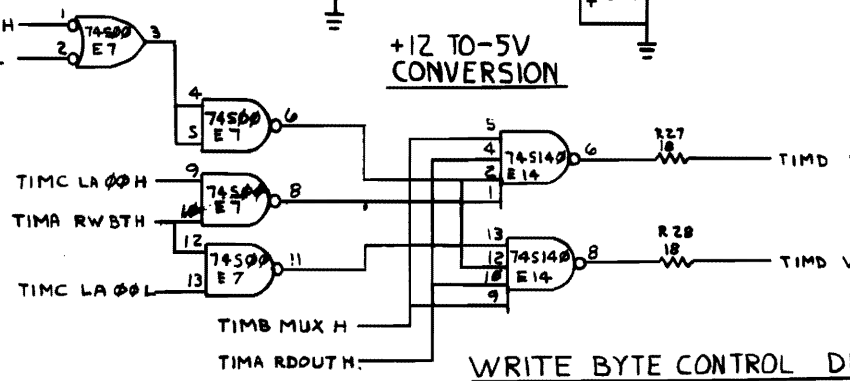
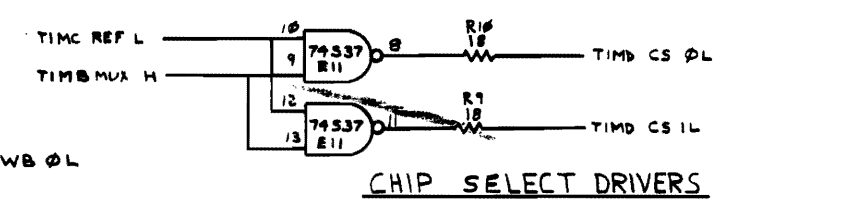
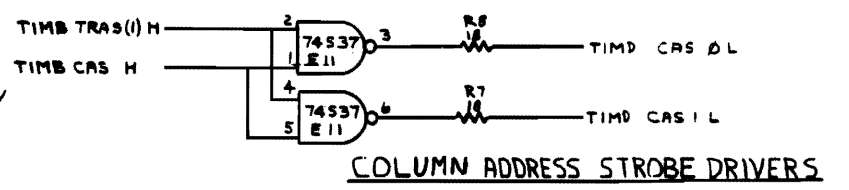
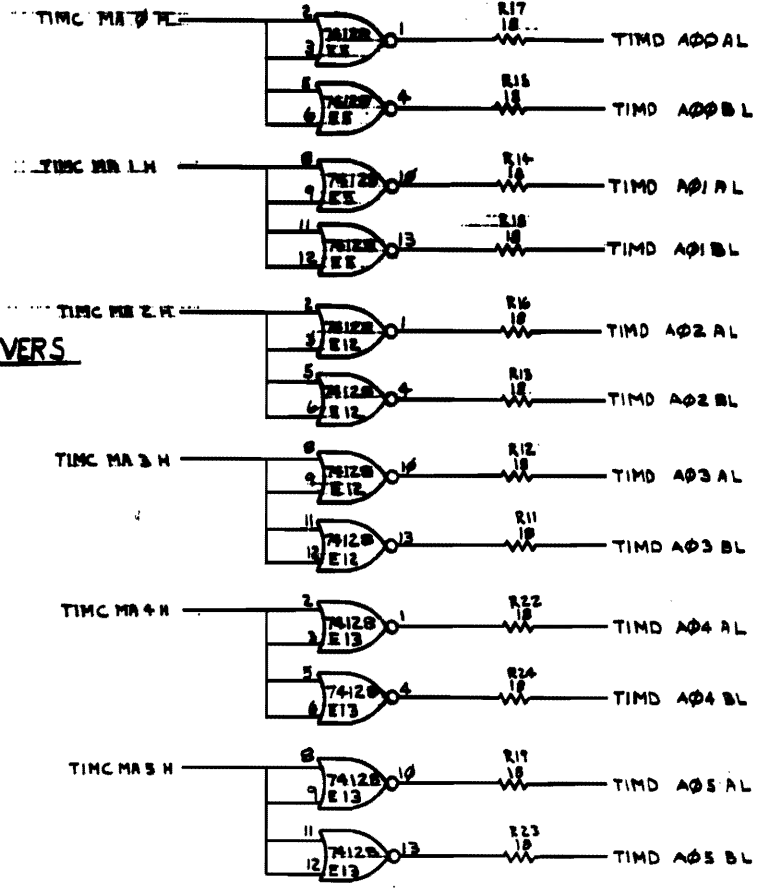
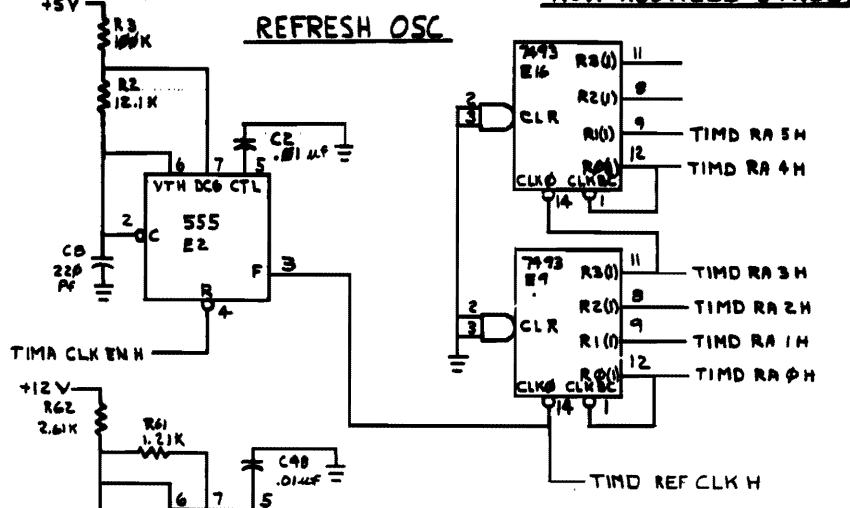
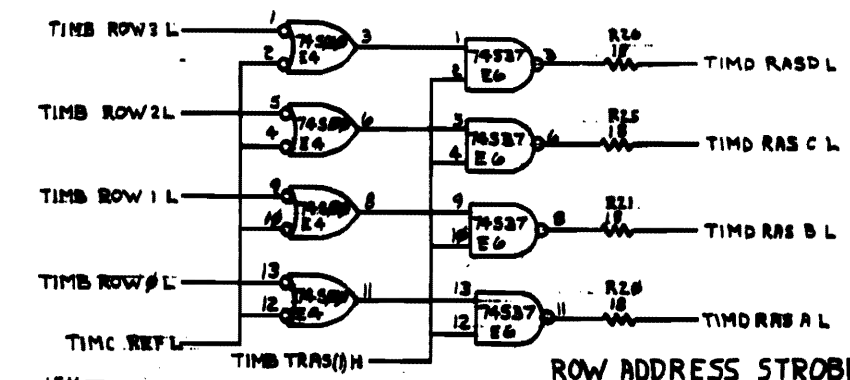
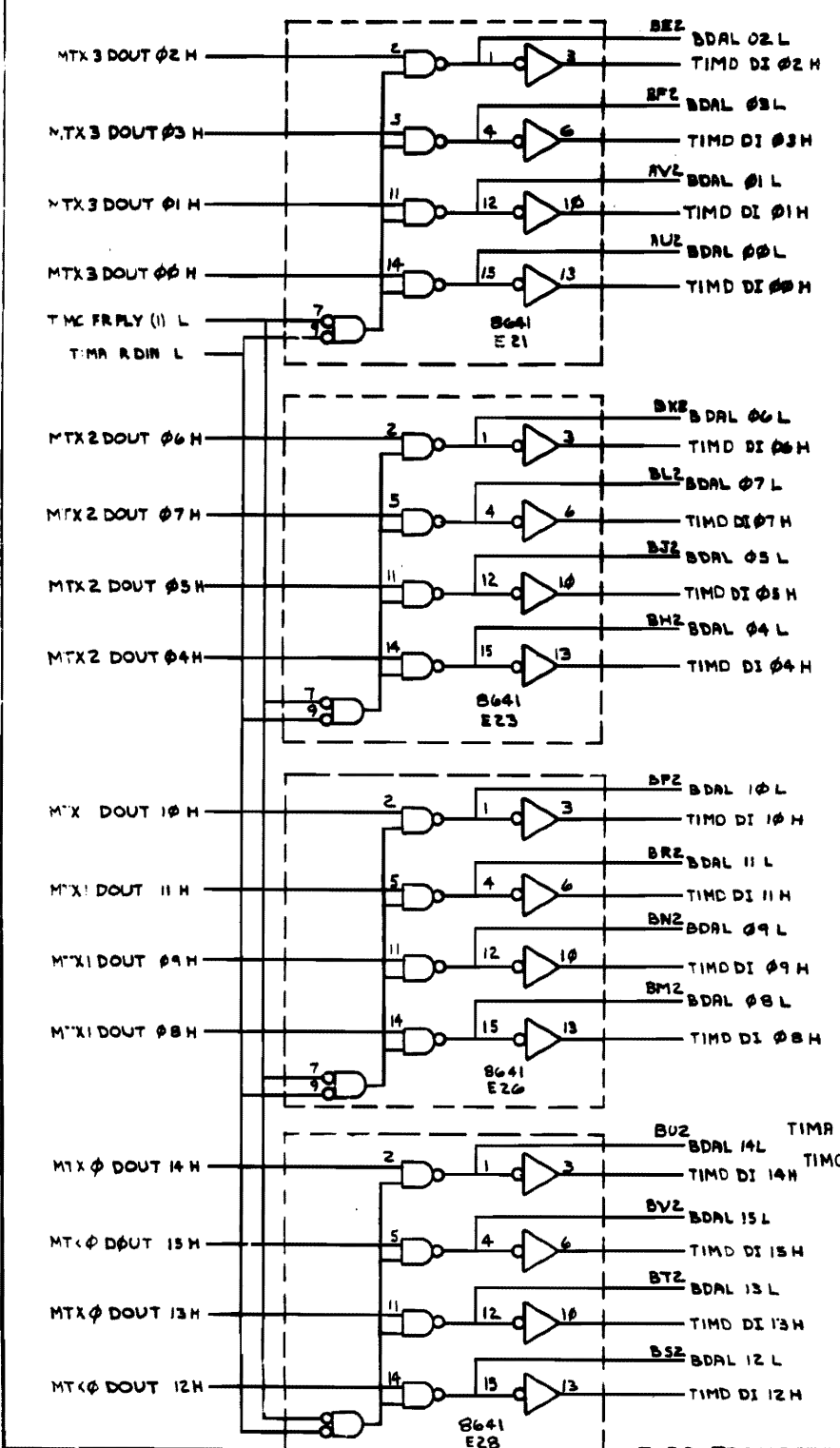


THIS DRAWING AND SPECIFICATIONS HEREIN ARE THE PROPERTY OF DIGITAL EQUIPMENT CORPORATION AND SHALL NOT BE REPRODUCED OR COPIED OR USED IN WHOLE OR IN PART AS THE BASIS FOR THE MANUFACTURE OR SALE OF ITEMS WITHOUT WRITTEN PERMISSION. COPYRIGHT © 1974 DIGITAL EQUIPMENT CORPORATION



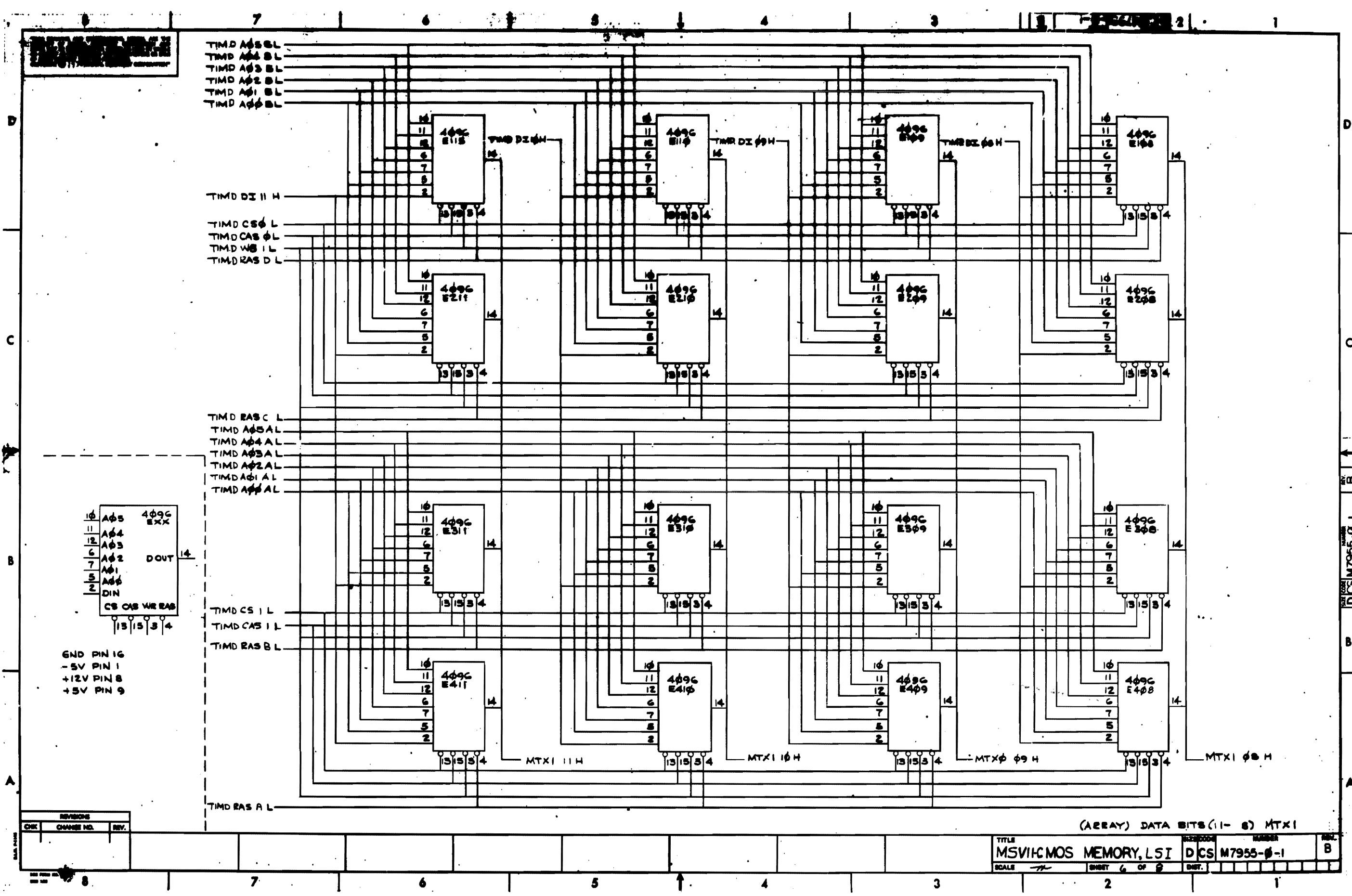
REVISIONS		
CHK	CHANGE NO.	REV.

THIS DRAWING AND SPECIFICATIONS HEREIN ARE THE PROPERTY OF DIGITAL EQUIPMENT CORPORATION AND SHALL NOT BE REPRODUCED OR COPIED IN WHOLE OR IN PART AS THE BASIS FOR THE MANUFACTURE OR SALE OF ANY SIMILAR WITHOUT WRITTEN PERMISSION. COPYRIGHT © 1979 DIGITAL EQUIPMENT CORPORATION



REVISIONS		
CHK	CHANGE NO.	REV.

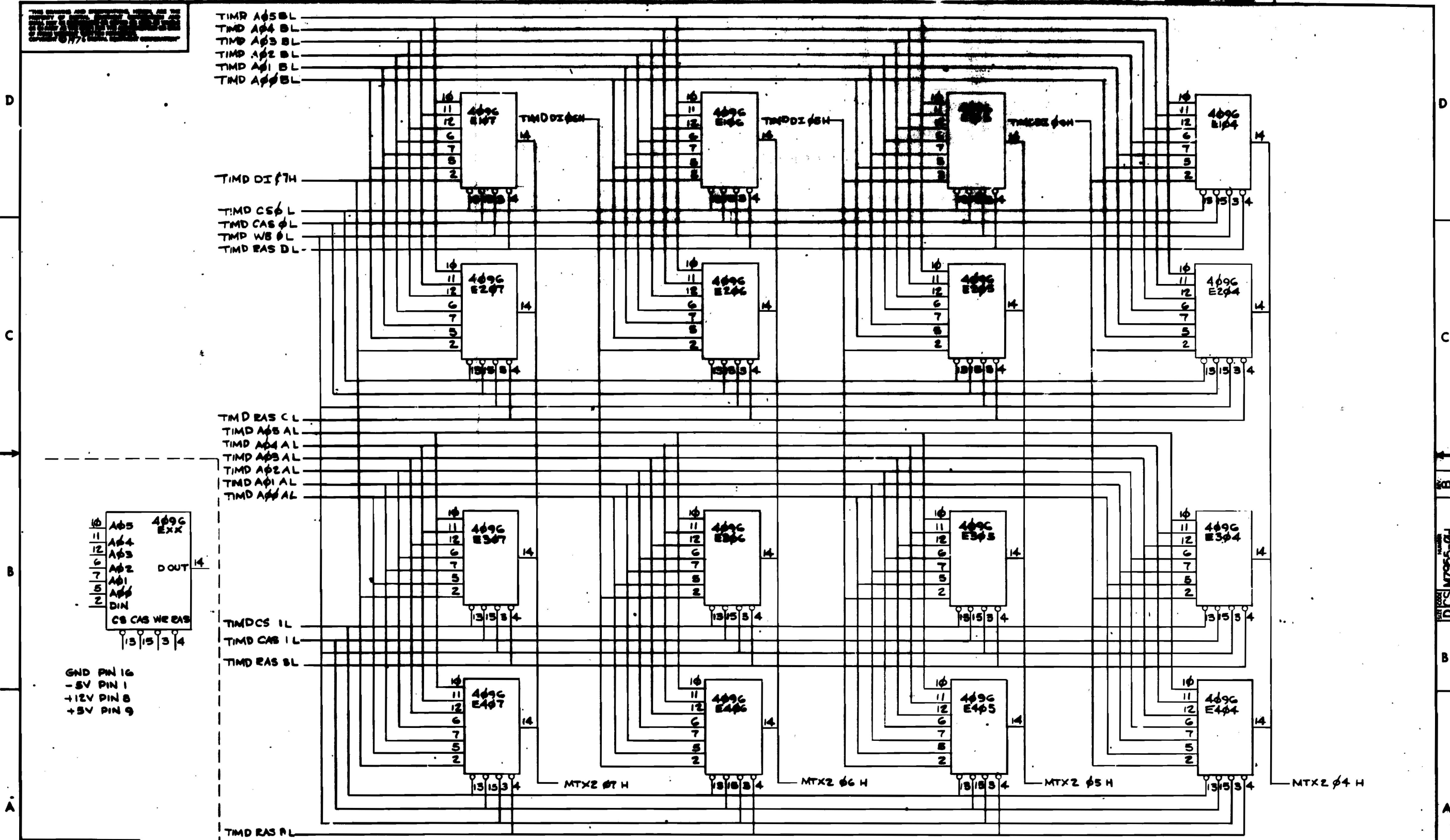




REVISIONS		
CHK	CHANGE NO.	REV.

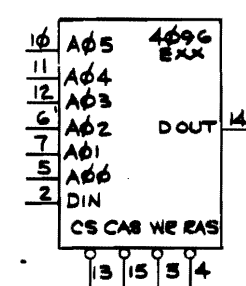
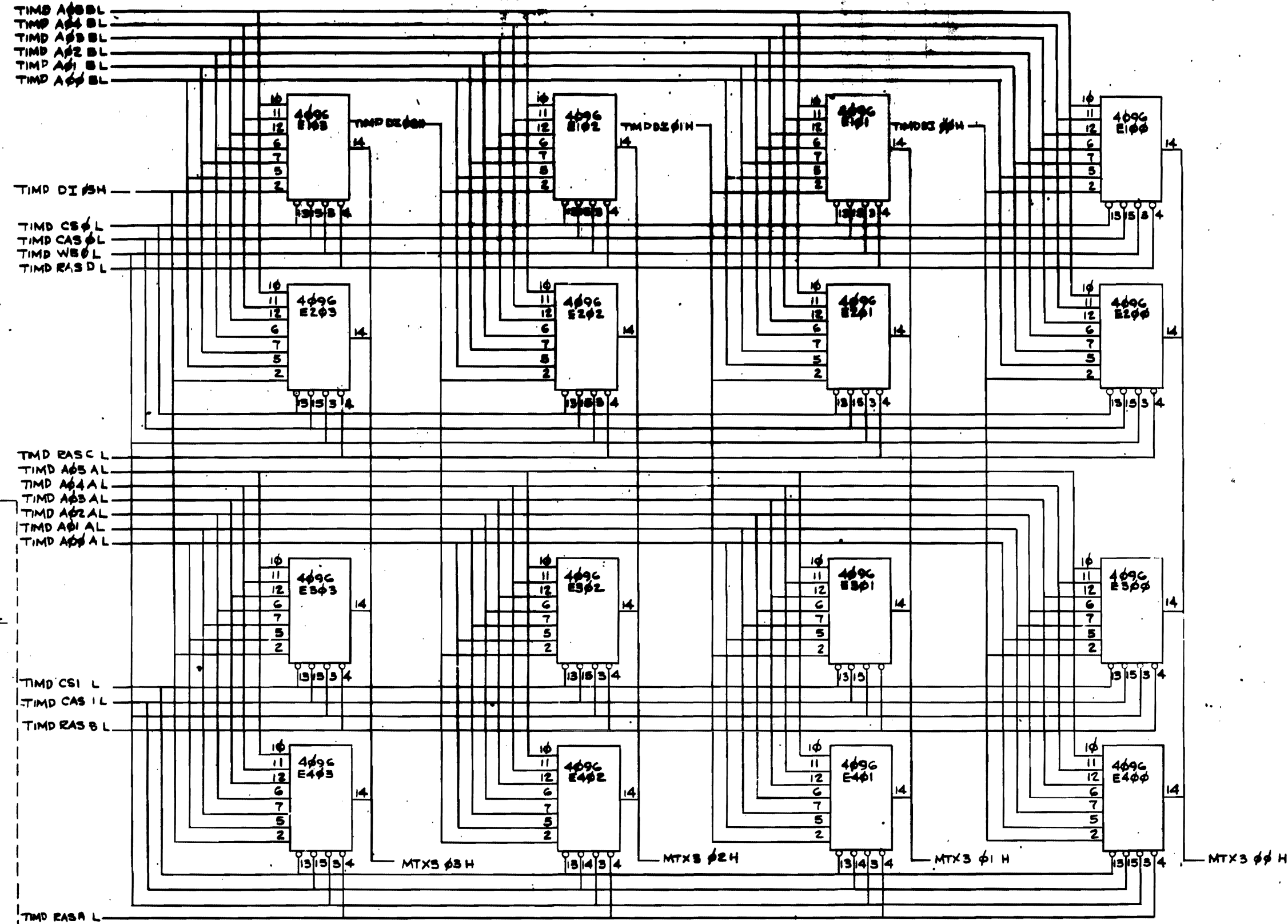
TITLE	MSV1CMOS MEMORY, LSI	SIZE CODE	DCS	NUMBER	M7955-0-1	REV.	B
SCALE	1/1	SHEET	6 OF 8	DIST.			

THIS DRAWING AND INFORMATION HEREON ARE THE PROPERTY OF DCS, INC. AND ARE NOT TO BE REPRODUCED OR TRANSMITTED IN ANY FORM OR BY ANY MEANS, ELECTRONIC OR MECHANICAL, INCLUDING PHOTOCOPYING, RECORDING, OR BY ANY INFORMATION STORAGE AND RETRIEVAL SYSTEM.



(ARRAY) DATA BITS (7-4) MTX2

DCS M7955-D-1

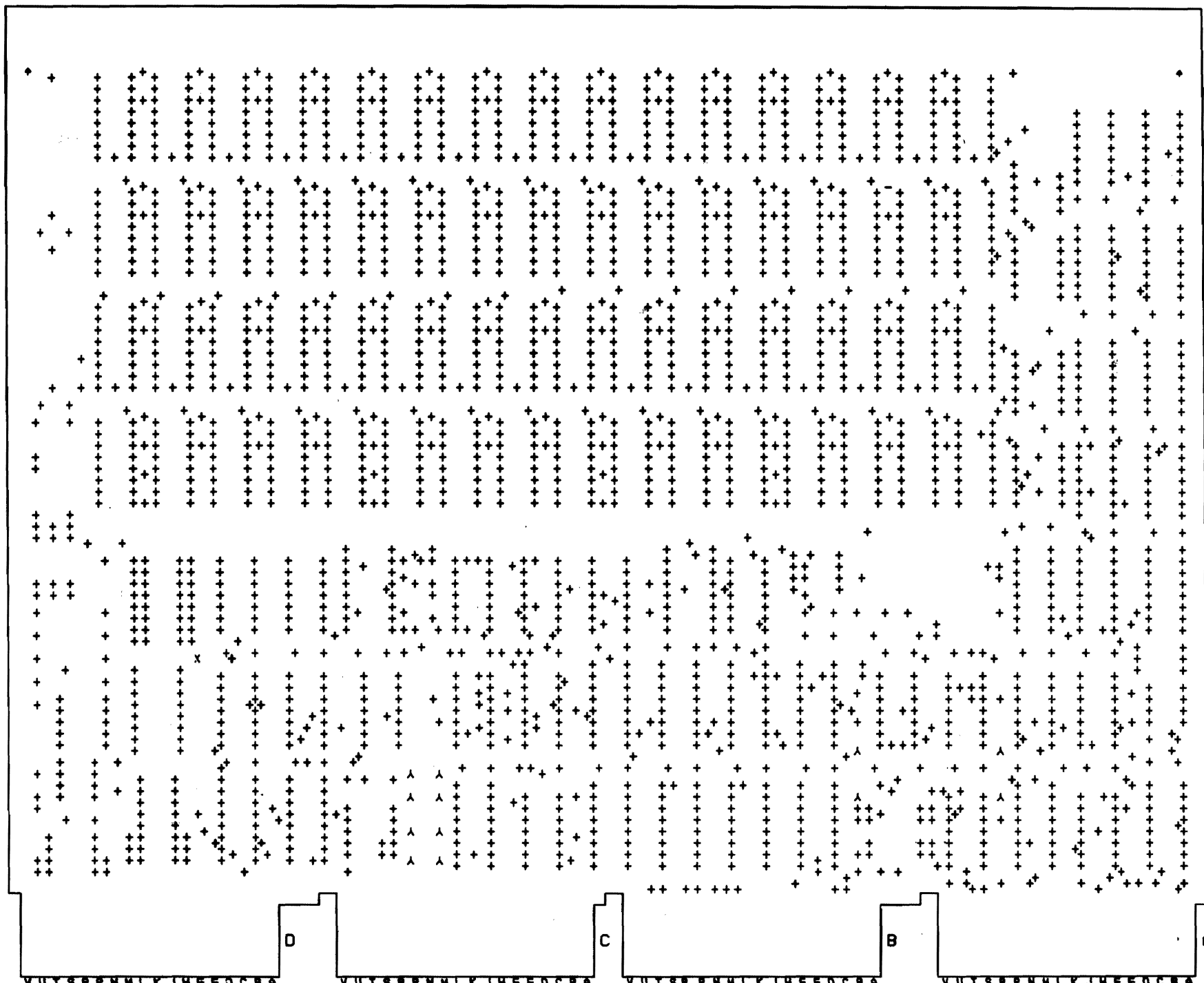


GND PIN 16  
 -5V PIN 1  
 +12V PIN 8  
 +5V PIN 9

REV.	CHG. NO.	REV.

DCS M7955-0-1

COMPONENT SIDE VIEW



NOTES:

---



---



---



---



---

EXCHANGE NO REV	

SYMBOL	HOLE DATA									
	+	A	X	+	Z	M	A	B	+	*
FIN HOLE SIZE	.038	.038	.158	.128						
PLATED	X	X	X	X						
NON PLATED										
RTI	25%	12	1	2						
Ø-OFF CRD HLE										
DRILL SIZE										

BOARD FABRICATION INFORMATION	
PANEL SIZE	8.54 X 11.75
PANEL DATA DWG.	MULTILAYER
PANEL MAT'L	052 THK
QTY. OF LAYERS	4
COPPER THICKNESS	1 OZ.
PTH.	X PRINT AND ETCH
MODULE INSERTED	188 TIMES OR MORE N/A

SIGNATURES		DATE
DRN. R. SULLIVAN		8-2-76
CHK'D. <i>[Signature]</i>		12 Sep 76
ENG. <i>[Signature]</i>		7/1/76
PROJ. ENGR. <i>[Signature]</i>		8/10/76
PROD. <i>[Signature]</i>		8/10/76
SCALE	2 : 1	
SHT.	1 OF 5	
NEXT HIGHER ASSY. D-UZ-M7955-0-01 ETCN REV. C		

digital	TITLE	DRILL AND ETCH DRAWING
SIZE CODE	NUMBER	REV
0	DMD 5012203-00	B

8 7 6 5 4 3 2 1

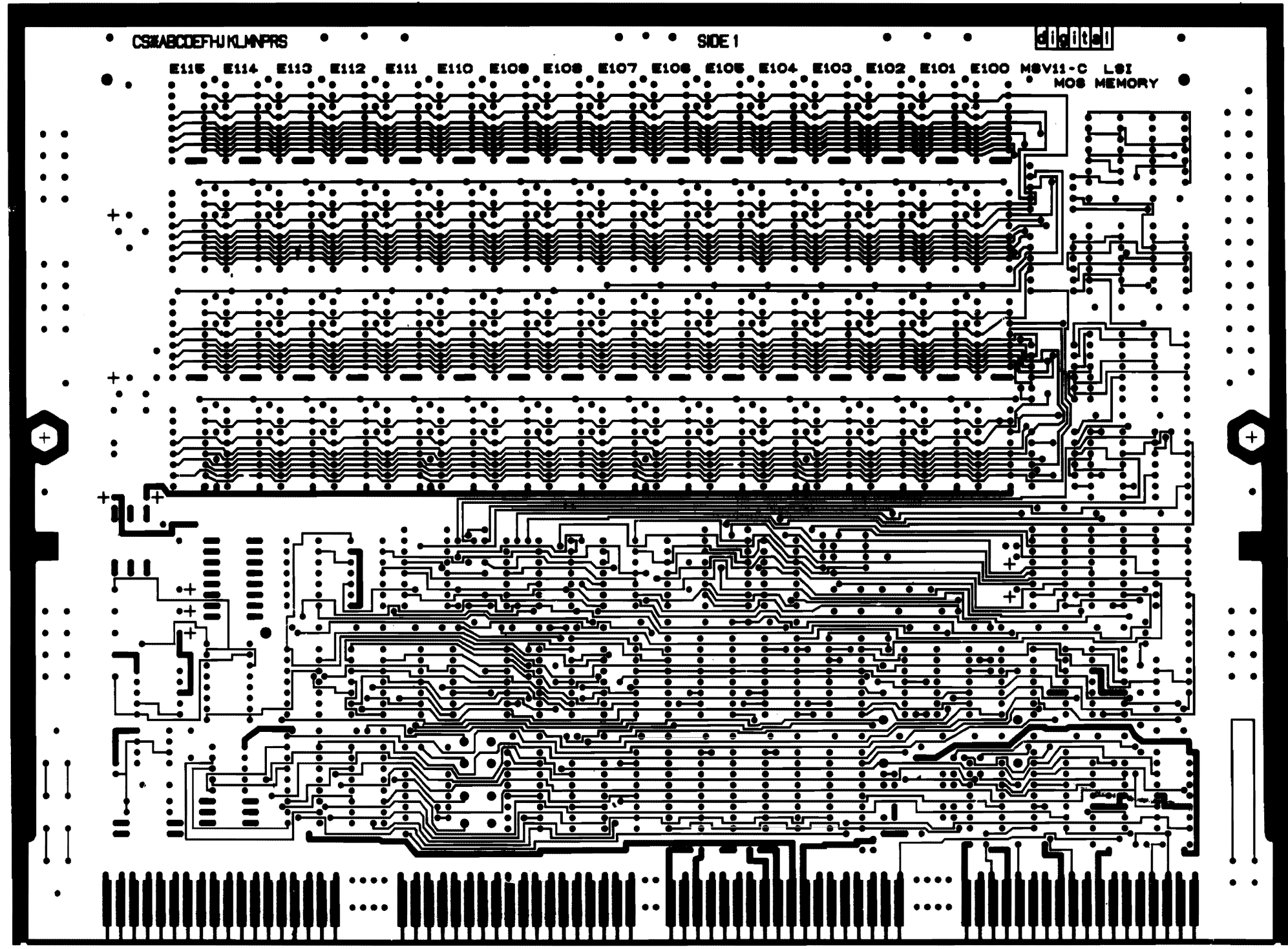
0-0-502203 2

THIS DRAWING AND SPECIFICATIONS HEREIN ARE THE PROPERTY OF DIGITAL EQUIPMENT CORPORATION AND SHALL NOT BE REPRODUCED OR COPIED OR USED IN WHOLE OR IN PART AS THE BASIS FOR THE MANUFACTURE OF SALE OR REPAIR WITHOUT WRITTEN PERMISSION  
© 1976 DIGITAL EQUIPMENT CORPORATION

L1

LAYER 1

5012203C  
M881032  
M7866



D  
C  
B  
A

D  
C  
B  
A

DMD 5012203-0-0 B

DATE	CHANGE NO.	REV.

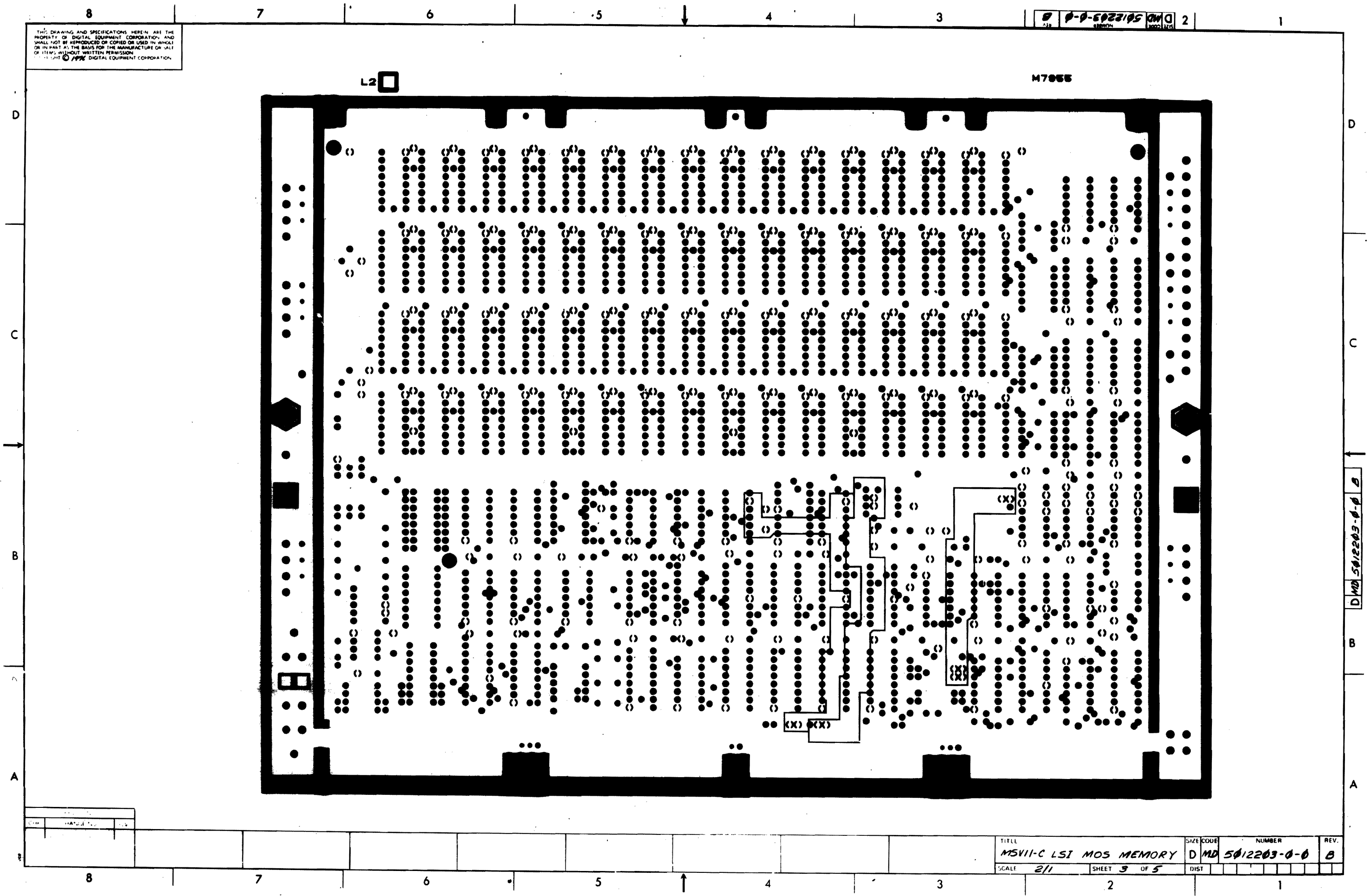
TITLE	SIZE CODE	NUMBER	REV.
MSV11-C LSI MOS MEMORY	DMD	5012203-0-0	B
SCALE 2/1	SHEET 2 OF 5	DIST	

8 7 6 5 4 3 2 1

THIS DRAWING AND SPECIFICATIONS HEREIN ARE THE PROPERTY OF DIGITAL EQUIPMENT CORPORATION, AND SHALL NOT BE REPRODUCED OR COPIED OR USED IN WHOLE OR IN PART AS THE BASIS FOR THE MANUFACTURE OR SALE OF ITEMS WITHOUT WRITTEN PERMISSION FROM DIGITAL EQUIPMENT CORPORATION.

DMD 5012203-0-0

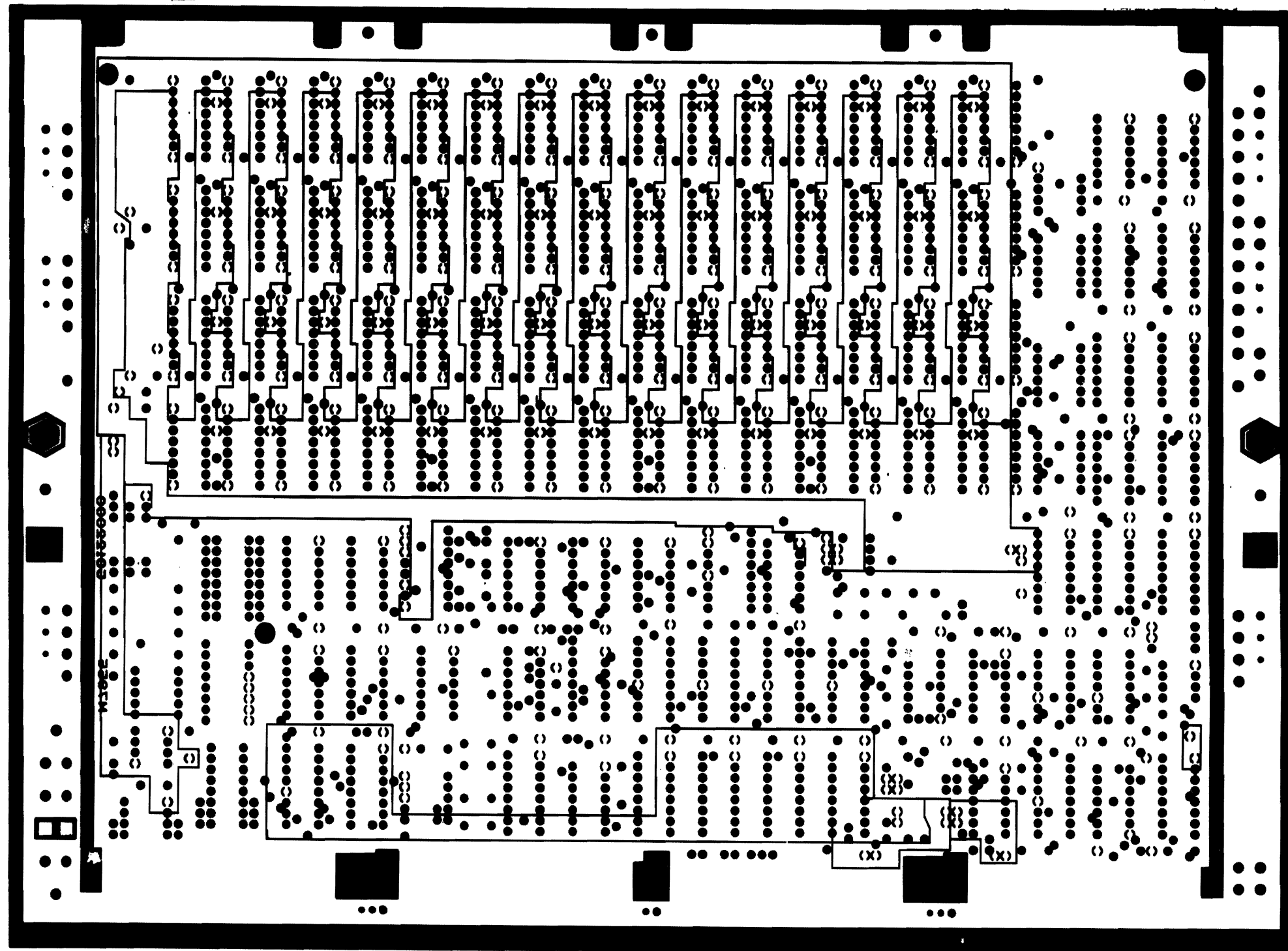
1



DATE	DATE	DATE

TITLE	MSVII-C LSI MOS MEMORY	SIZE CODE	DMD	NUMBER	5012203-0-0	REV.	B
SCALE	2/1	SHEET	3	OF	5	DIST	

THIS DRAWING AND SPECIFICATIONS HEREIN ARE THE PROPERTY OF DIGITAL EQUIPMENT CORPORATION AND SHALL NOT BE REPRODUCED OR COPIED OR USED IN WHOLE OR IN PART AS THE BASIS FOR THE MANUFACTURE OR SALE OF ITEMS WITHOUT WRITTEN PERMISSION. COPYRIGHT © 1975 DIGITAL EQUIPMENT CORPORATION.



D  
C  
B  
A

D  
C  
B  
A

DMD 5012203-0-0 B

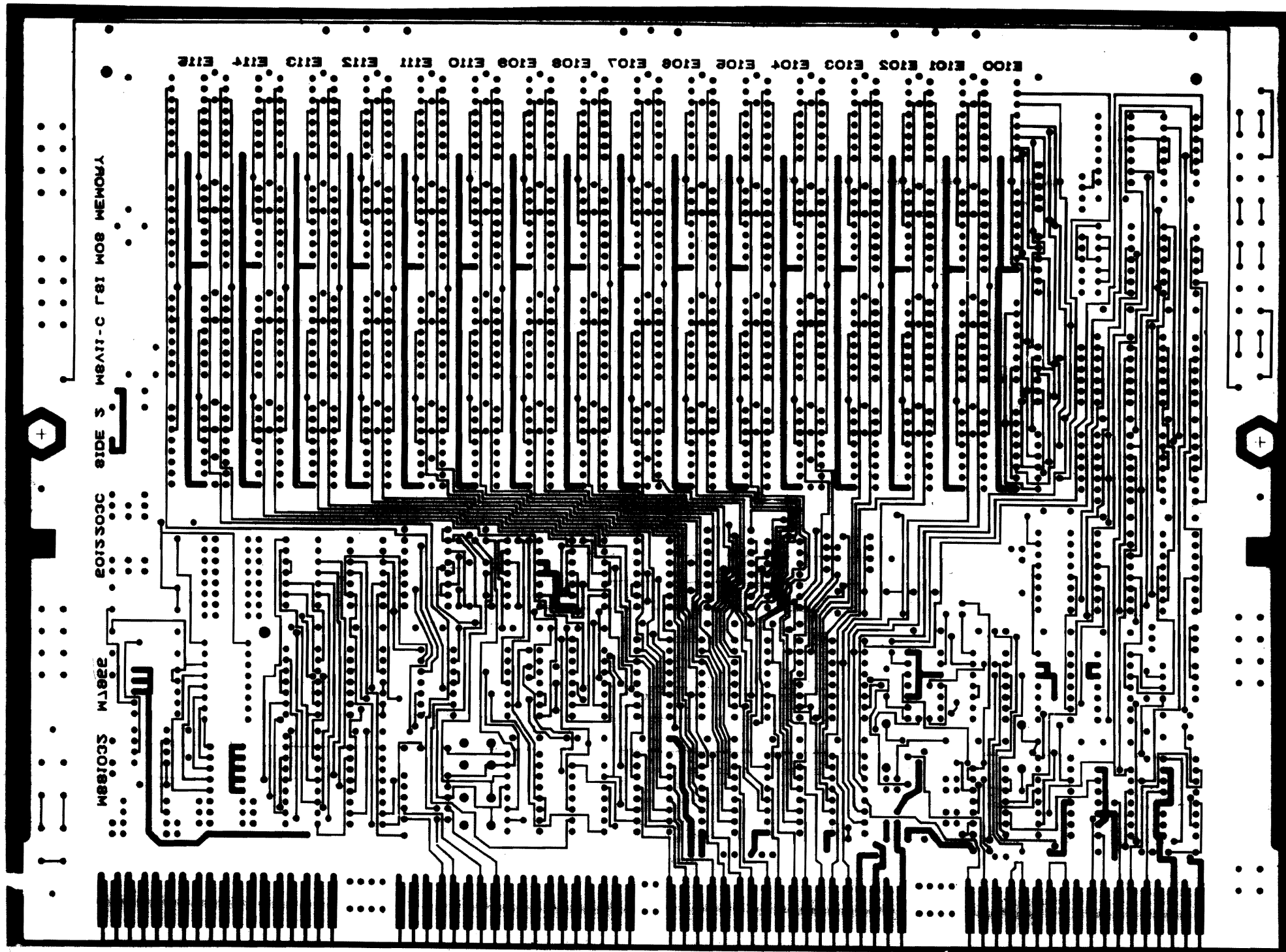
REV	DATE	BY

TITLE	MSVII-C LST MOS MEMORY	SIZE CODE	D MD	NUMBER	5012203-0-0	REV.	B
SCALE	2/1	SHEET	4	OF	5	DIST.	

8 7 6 5 4 3 2 1

THIS DRAWING AND SPECIFICATIONS HEREIN ARE THE PROPERTY OF DIGITAL EQUIPMENT CORPORATION AND SHALL NOT BE REPRODUCED OR COPIED OR USED IN WHOLE OR IN PART AS THE BASIS FOR THE MANUFACTURE OR SALE OF ITEMS WITHOUT WRITTEN PERMISSION FROM DIGITAL EQUIPMENT CORPORATION.

DMD 5012203-0-0 2



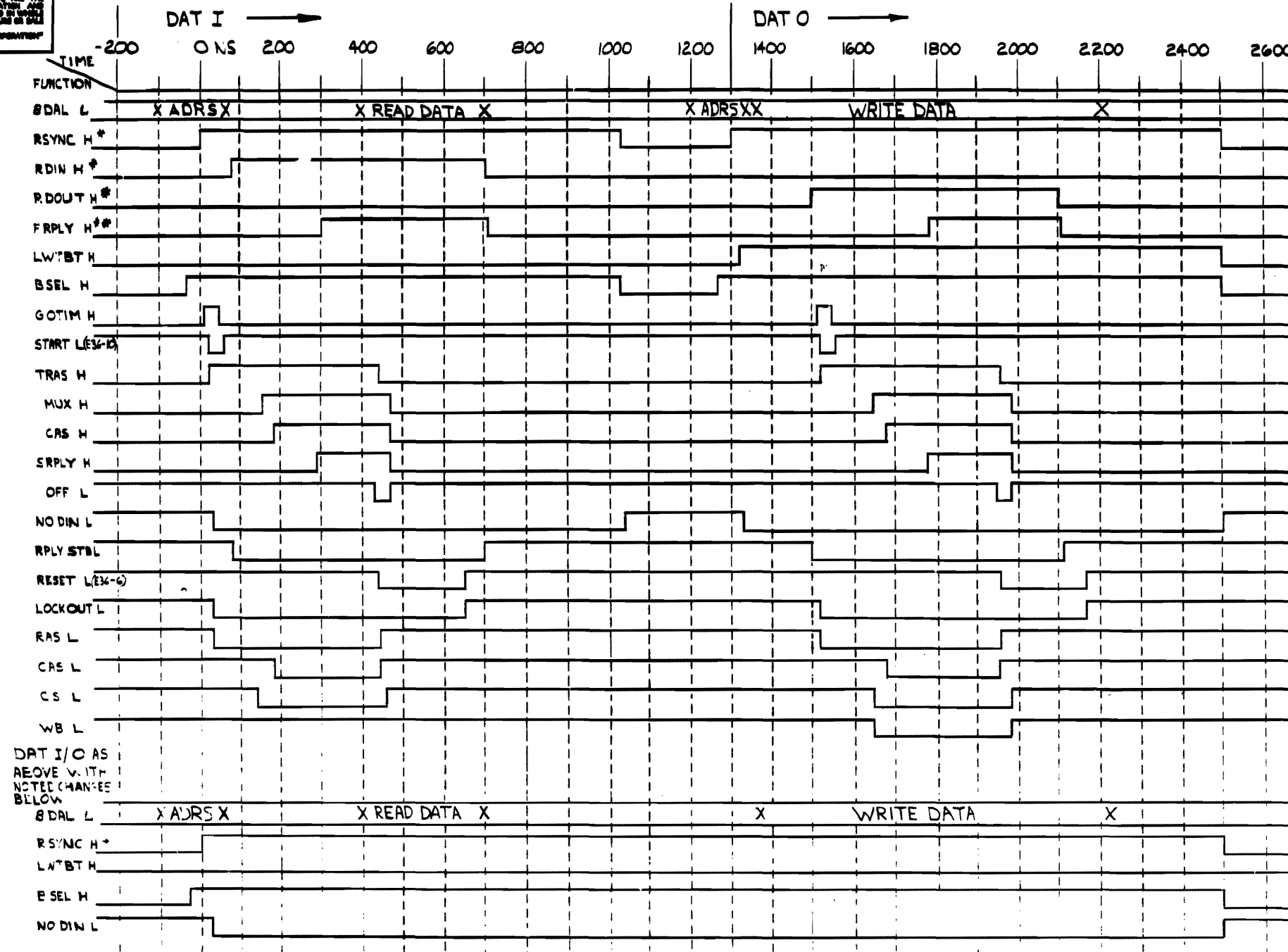
CHK	CHANGE TO	REV.

TITLE	MSV11-C LSI MOS MEMORY	SIZE CODE	DMD	NUMBER	5012203-0-0	REV.	B
SCALE	2/1	SHEET	5 OF 5	DIST.			

DMD 5012203-0-0 B

THE DRAWING AND SPECIFICATION HEREIN ARE THE PROPERTY OF BENTON BENDIS CORPORATION AND WILL BE KEPT IN CONFIDENTIALITY AS LONG AS POSSIBLE IN PART AS THE DRAWING AND SPECIFICATION OR SALE OF THIS DRAWING WITHIN THE UNITED STATES IS PROHIBITED BY PATENT RIGHTS. BENTON BENDIS CORPORATION

DITD M7955-0-2



**BDAL L:** BUFFERED BIDIRECTIONAL ADDRESS AND DATA BUS

**RSYNCH:** BUFFERED BUS SIGNAL FROM MASTER THAT INITIATES BUS CYCLE AND LATCHES ADRS & DTBT

**RDIN H:** BUFFERED BUS SIGNAL FROM MASTER THAT ENABLES DATA TO BE PUT ON THE BUS.

**RDOUT H:** BUFFERED BUS SIGNAL FROM MASTER THAT INDICATES WRITE DATA IS ON THE BUS & STARTS DAT O.

**FRPLY H:** FLOP DRIVING BRPLY L BUS SIGNAL AS A REPLY TO DIN & DONT.

**LWTBTB H:** LATCHED SIGNAL SAYING THIS IS A DATO CYCLE.

**BSEL H:** SIGNAL SAYING THAT I AM THE DEVICE REQUESTED BY THE MASTER.

**GOTIM H:** SIGNAL THAT STARTS MEMORY TIMING

**START L:** START PULSE FOR MEMORY TIMING AFTER REFRESH SYNCHRONIZATION.

**TRAS H:** SIGNAL USED FOR RAS AND TO START LOCKOUT.

**MUX H:** SIGNAL USED TO SWITCH ADRS MUX AND SEND CS & WB

**CAS H:** SIGNAL USED FOR CAS.

**SRPLY H:** SIGNAL USED TO SET FRPLY H FLOP.

**OFF L:** SIGNAL USED TO RESET MEMORY TIMING

**NODIN L:** SIGNAL USED TO PREVENT MULTIPLE CYCLES AND TO WAIT FOR RDOUT H IN DATO CYCLES

**RPLY STBL:** RESET FOR FRPLY H FLOP.

**RESET L:** EXTENDS LOCKOUT SIGNAL TO ENSURE PROPER MEMORY TIMING.

**LOCKOUT L:** SIGNAL TO PREVENT STARTING ANOTHER CYCLE TILL COMPLETING THE PRESENT CYCLE

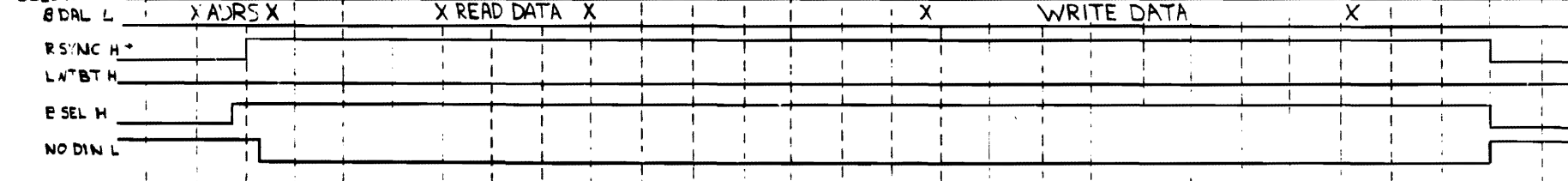
**RAS L:** MEMORY CHIP ROW ADDRESS STROBE.

**CAS L:** MEMORY CHIP COLUMN ADDRESS STROBE

**CS L:** MEMORY CHIP SELECT LINE

**WB L:** MEMORY CHIP WRITE ENABLE

DAT I/C AS ABOVE V. IT- NOTED CHANGES BELOW



\* THE WIDTH OF RSYNC, RDIN, AND RDOUT IS DETERMINED BY THE MASTER DEVICE.  
 \*\* IF RDIN COMES AFTER FRPLY H IS SET, FRPLY M AND THE READ DATA WILL WAIT FOR THE RDIN.

DRAWING NO. M7955-0-2

DRN. <i>[Signature]</i>	11/18/76	FIRST USED ON	MSVII-C
CHK'D <i>[Signature]</i>	11/18/76	TITLE	MSVII-C TIMING
ENG. <i>[Signature]</i>	11/18/76	SIZE	D
PROJ. ENG. <i>[Signature]</i>	11/18/76	NUMBER	M7955-0-2
PROD. <i>[Signature]</i>	11/18/76	REV.	A
NEXT HIGHER ASSY.		SCALE	
B-DD-MSVII-C		DIST.	

DITD M7955-0-2