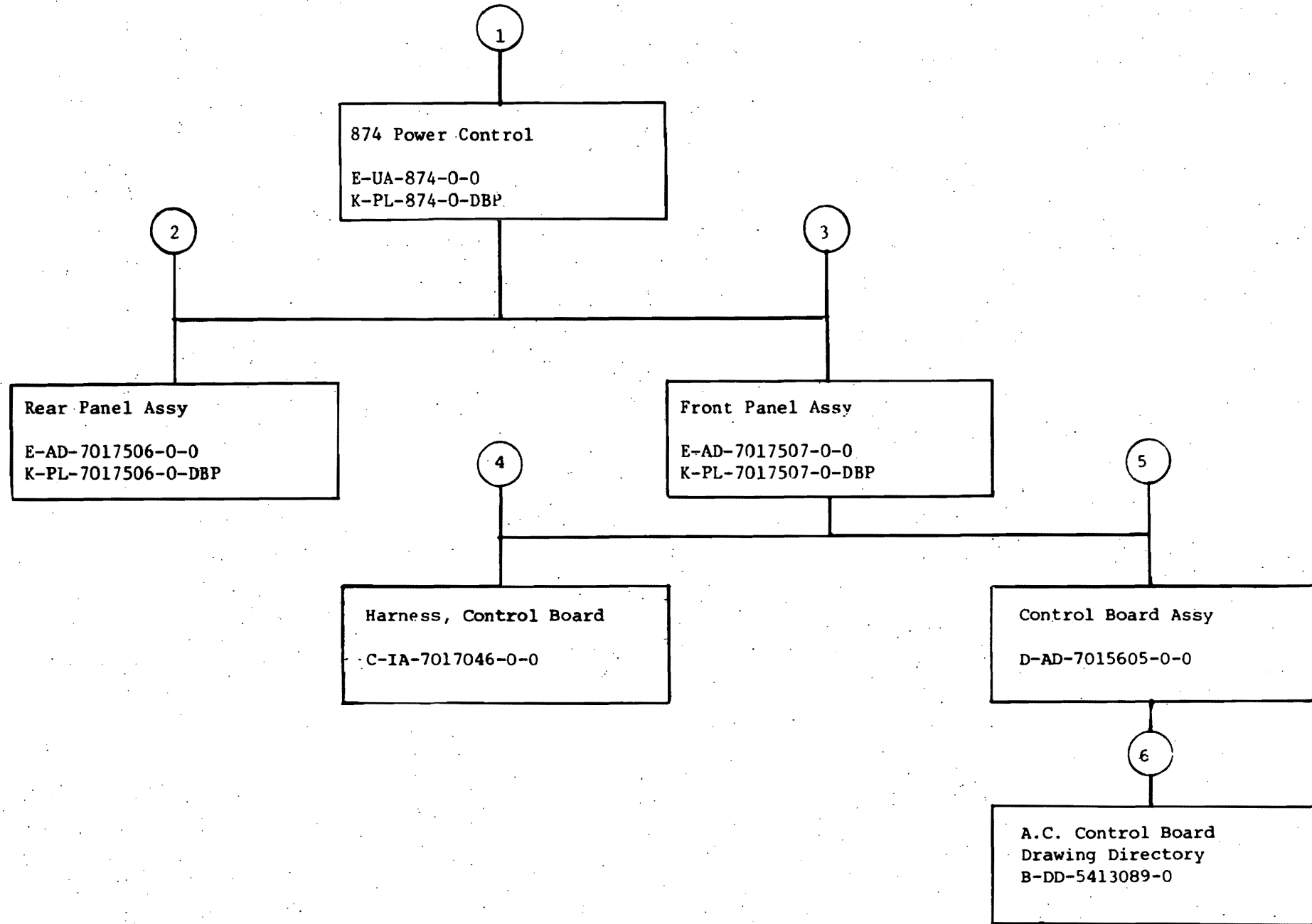
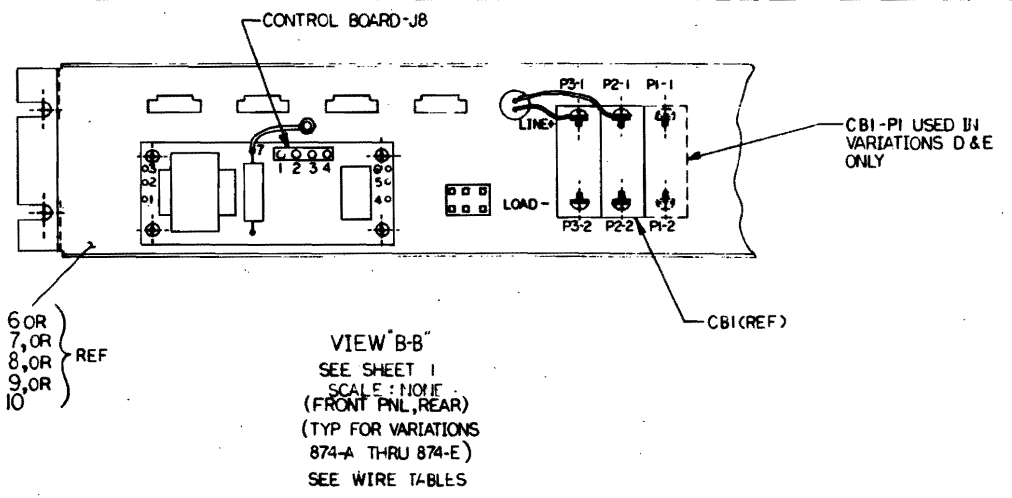
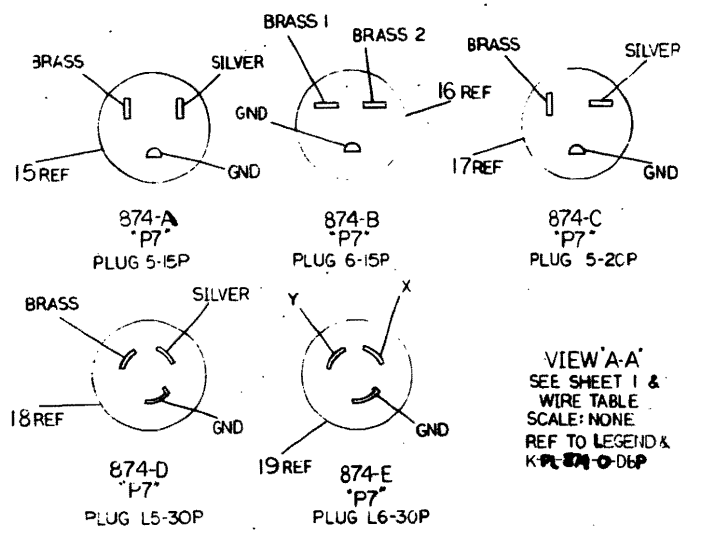
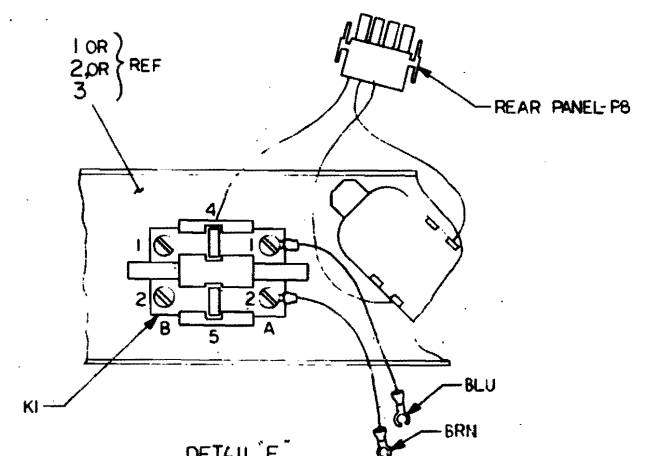
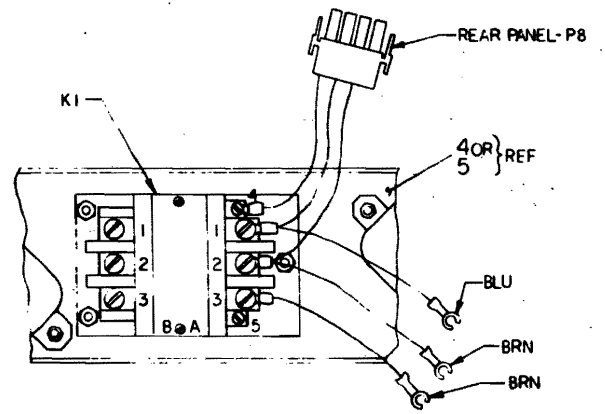
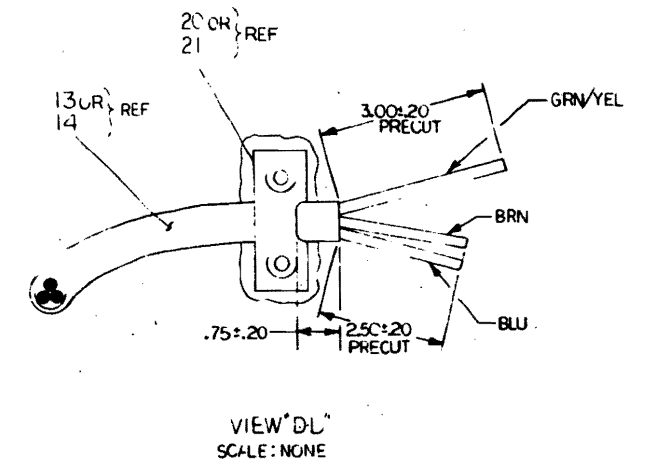
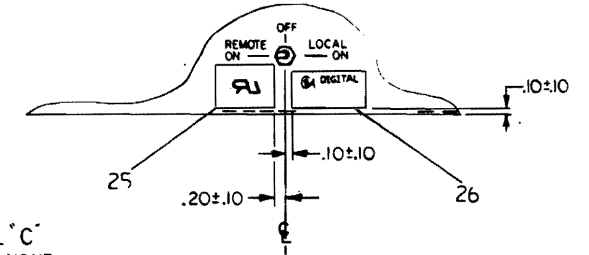


"THIS DRAWING AND SPECIFICATIONS, HEREIN, ARE THE PROPERTY OF DIGITAL EQUIPMENT CORPORATION AND SHALL NOT BE REPRODUCED OR COPIED OR USED IN WHOLE OR IN PART AS THE BASIS FOR THE MANUFACTURE OR SALE OF ITEMS WITHOUT WRITTEN PERMISSION. 1980
 COPYRIGHT © DIGITAL EQUIPMENT CORPORATION"



WIRE TABLE (VARIATIONS 874 A,B & C)							WIRE TABLE (VARIATIONS 874 D & E ONLY)						
ITEM NO	DESCRIPTION	FROM	TO	REMARKS	ITEM NO	DESCRIPTION	FROM	TO	REMARKS				
AWG	COLOR	CONNECTION	WITH	CONNECTION	WITH	AWG	COLOR	CONNECTION	WITH	CONNECTION	WITH		
10 OR 2 OR 3	12	BLU	REAR PANEL KI-A-1	FRONT PANEL CBI-P3-2	SEE DETAIL "E", VIEW "B-B", & NOTE 3, SHT 1.	4 OR 5	12	BLU	REAR PANEL KI-A-1	FRONT PANEL CBI-P3-2	SEE VIEW "B-B", "DETAIL "E" & NOTE 3, SHT 1		
	14	BRN	REAR PANEL KI-A-2	FRONT PANEL CBI-P2-2		14	BRN	REAR PANEL KI-A-2	FRONT PANEL CBI-P2-2				
			REAR PANEL P8	FRONT PANEL CONT-BD-J6				REAR PANEL P8	FRONT PANEL CNTRL-BD-J8				
13	14	GRN/ YEL	FRONT PANEL LF-LINE-GND	P7-GND	FOR VARIATIONS 874-A & C ONLY. LENGTH-15FT SEE VIEW "D-D"	14	12	GRN/ YEL	FRONT PANEL LF-LINE-GND	P7-GND	FOR VARIATION 874-D ONLY LENGTH-15FT SEE VIEW "D-D"		
	14	BRN	FRONT PANEL LF-LINE-PH1	P7-BRASS			12	BRN	FRONT PANEL LF-LINE-PH1	P7-BRASS			
	14	BLU	FRONT PANEL LF-LINE-PH	P7-SILVER			12	BLU	FRONT PANEL LF-LINE-N	P7-SILVER			
13	14	GRN/ YEL	FRONT PANEL LF-LINE-GND	P7-GND	FOR VARIATION 874-E ONLY. LENGTH-15FT SEE VIEW "D-D"	14	12	GRN/ YEL	FRONT PANEL LF-LINE-GND	P7-GND	FOR VARIATION 874-E ONLY LENGTH-15FT SEE VIEW "D-D"		
	14	BRN	FRONT PANEL LF-LINE-PH1	P7-BRASS 1			12	BRN	FRONT PANEL LF-LINE-PH1	P7-Y			
	14	BLU	FRONT PANEL LF-LINE-N	P7-BRASS 2			12	BLU	FRONT PANEL LF-LINE-N	P7-X			



LINE	ITEM	DOCUMENT NUMBER	PART NUMBER	DESCRIPTION	QUANTITY PER VARIATION				
					A	B	C	D	E
1	1	E-AD-7017506-0-0	7017506-00	REAR PANEL ASSY (874-A)	1	0	0	0	0
2	2	E-AD-7017506-0-0	7017506-01	REAR PANEL ASSY (874-B)	0	1	0	0	0
3	3	E-AD-7017506-0-0	7017506-02	REAR PANEL ASSY (874-C)	0	0	1	0	0
4	4	E-AD-7017506-0-0	7017506-03	REAR PANEL ASSY (874-D)	0	0	0	1	0
5	5	E-AD-7017506-0-0	7017506-04	REAR PANEL ASSY (874-E)	0	0	0	0	1
6	6	E-AD-7017507-0-0	7017507-00	FRONT PANEL ASSY (874-A)	1	0	0	0	0
7	7	E-AD-7017507-0-0	7017507-01	FRONT PANEL ASSY (874-B)	0	1	0	0	0
8	8	E-AD-7017507-0-0	7017507-02	FRONT PANEL ASSY (874-C)	0	0	1	0	0
9	9	E-AD-7017507-0-0	7017507-03	FRONT PANEL ASSY (874-D)	0	0	0	1	0
10	10	E-AD-7017507-0-0	7017507-04	FRONT PANEL ASSY (874-E)	0	0	0	0	1
11	11	C-IA-7424066-0-0	7424066-00	COVER, PWR CONTROLL (874)	2	2	2	2	2
12	12	C-MD-7422926-0-0	7422926-00	COVER POWER CORD	1	1	1	1	1
13	13	A-PS-1700027-0-0	1700027-01	PWR CORD,14-3,300V 13A	1	1	1	0	0
14	14	A-PS-1700025-0-0	1700025-00	PWR CORD,12-3,600V 18A	0	0	0	1	1
15	15	A-PS-9008938-0-0	9008938-00	CONN,POWER 3PIN PLUG NEMA 5-15P	1	0	0	0	0
16	16	A-PS-9008853-0-0	9008853-00	CONN,POWER 3PIN PLUG NEMA 6-15P	0	1	0	0	0
17	17	A-PS-1215183-0-0	1215183-00	CONN,POWER 3PIN PLUG NEMA 5-20P	0	0	1	0	0
18	18	A-PS-1211193-0-0	1211193-00	CONN,POWER 2PIN PLUG NEMA L5-30	0	0	0	1	0
19	19	A-PS-1216886-0-0	1216886-00	CONN,POWER 3PIN PLUG NEMA LG-30	0	0	0	0	1
20	20		1215566-00	CLAMP, CABLE	1	1	1	0	0
21	21		1215566-01	CLAMP, CABLE	0	0	0	1	1
22	22	A-PS-3617696-0-0	3617696-01	LABEL,DANGER HIGH VOLTAGE	1	1	1	1	1
23	23	A-PS-3613210-0-0	3613210-02	LABEL,ELECTRICAL DATA	1	1	1	1	1
24	24		9006690-00	WASHER, LOCK, S.S. #8	2	2	2	2	2
25	25	A-PS-3612063-0-0	3612063-00	LABEL, ,ADHESIVE I.D. FOR UL C	1	1	1	1	1
26	26	A-PS-3613211-0-0	3613211-01	DECAL,CLEAR PREPRINTED CSA 1-1/4	1	1	1	1	1
27	27		9000001-03	STANDOFF,HEX,M/F 8-32X	1	2	2	2	2
28	28		9010174-01	SCREW, SEMS, PHILLIPS PAN HD 8-3	6	6	6	6	6
29	29		9010174-02	SCREW, SEMS, PHILLIPS PAN HD 8-3	2	2	2	2	2
30	30		9010174-00	SCREW, SEMS, PHILLIPS PAN HD 6-3	4	4	4	4	4

REVISION HISTORY		BASIC PART NO: 00874		DRN:	T.ROCHA	DATE:	01-APR-80	D I G I T A L			
ENG	ECO NUMBER	REV	SECTION A OF A	CHK'D:	A.J.ROCHA	DATE:	19-JUN-80	TITLE		PARTS LIST	
---	INITIAL	A	SECTION. VARIATION INDEX					874 POWER CONTROLLER			
			[A] A ,B ,C ,D ,E	DES.ENG.:	D.CARLSON	DATE:	19-JUN-80				
			[B]	RESP.ENG.:	D.CARLSON	DATE:	19-JUN-80	DOCUMENT NUMBER			
			[C]					SIZE	CODE	NUMBER	REV
			[D]	MFG.ENG.:	A.DAVIS	DATE:	19-JUN-80	K	PL	874-0-DBP	A
			[E]	ASSEMBLY NUMBER:		TOP DOCUMENT NUMBER:		FILE NAME:		EDIT #	
			[F]	E-UA-874-0-0		B-DD-874-0-0		Z0696.PLS		15	

* THIS DRAWING AND SPECIFICATIONS HEREIN, ARE THE PROPERTY OF DIGITAL EQUIPMENT CORPORATION AND SHALL NOT BE REPRODUCED OR COPIED OR USED IN WHOLE OR IN PART AS THE BASIS FOR THE MANUFACTURE OR SALE OF ITEMS WITHOUT WRITTEN PERMISSION. COPYRIGHT (C) 1980. DIGITAL EQUIPMENT CORPORATION *

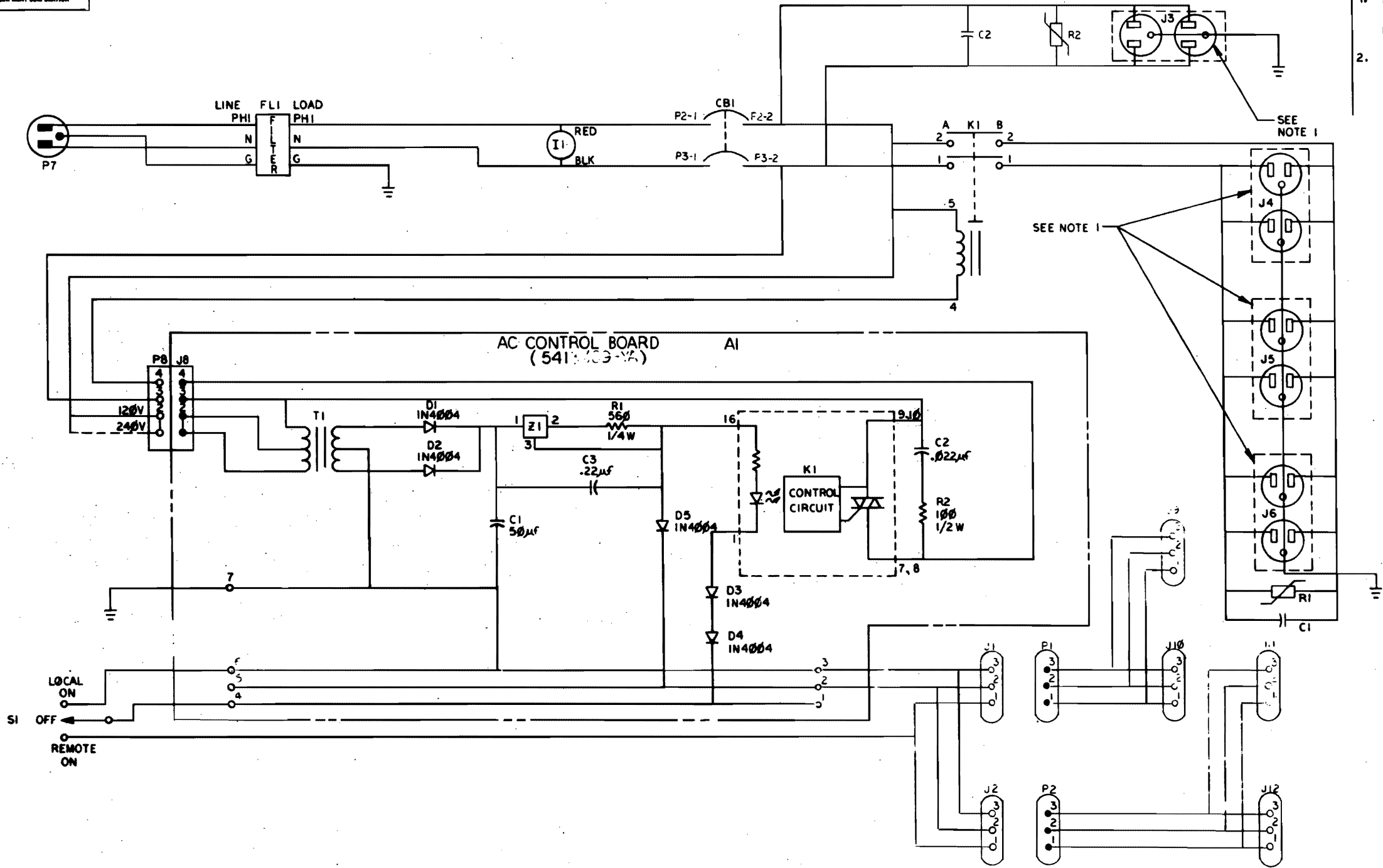
TW

LINE	ITEM	DOCUMENT NUMBER	PART NUMBER	DESCRIPTION	QUANTITY PER VARIATION				
					A	B	C	D	E
31	31	A-PS-3617724-0-0	3617724-01	LABEL,PWR.CNTRL 874A	1	0	0	0	0
32	32	A-PS-3617724-0-0	3617724-02	LABEL,PWR,CNTRL 874B	0	1	0	0	0
33	33	A-PS-3617724-0-0	3617724-03	LABEL,PWR CNTRL 874C	0	0	1	0	0
34	34	A-PS-3617724-0-0	3617724-04	LABEL,PWR CNTRL 874D	0	0	0	1	0
35	35	A-PS-3617724-0-0	3617724-05	LABEL,PWR CNTRL 874E	0	0	0	0	1
36	36	A-PS-3616798-0-0	3616798-01	LABEL,220-240V OUTLET	0	0	0	0	1
37	37	A-PS-3616798-0-0	3616798-02	LABEL,220-240V OUTLET	0	1	0	0	0
38	38		9007926-01	TERM RING 1POS INSULATED,12-10	0	0	0	3	3
39	39		9007928-00	TERM RING 1POS INSULATED,16-14	3	3	3	0	0
40	40		9007031-00	TIE,CABLE BUNDL.DIA 0- 3/4"=101	4	4	4	4	4
41	41		9009700-00	SCREW, SEMS, PHILLIPS TRUSS HD 1	4	4	4	4	4
42	42		9006664-00	WASHER, FLAT, .437 OD X .218 ID	4	4	4	4	4
43	43		9007786-00	RETAINER, U-NUT, 10-32	4	4	4	4	4
44	44	D-CS-874-0-1		874 CIRCUIT SCHEMATIC	REF	REF	REF	REF	REF
45	45		9906077-03	BAG, COTTON, PARTS	1	1	1	1	1

D	I	G	I	T	A	L	TITLE	SECTION A OF A	SIZE	CODE	DOCUMENT NUMBER	REV
							874 POWER CONTROLLER		K	PL	874-0-DBP	A

THIS DRAWING AND SPECIFICATIONS HEREON ARE THE PROPERTY OF DIGITAL EQUIPMENT CORPORATION AND SHALL NOT BE REPRODUCED OR COPIED IN WHOLE OR IN PART AS THE BASIS FOR THE MANUFACTURE OR SALE OF EQUIPMENT WITHOUT PERMISSION OF DIGITAL EQUIPMENT CORPORATION © 1960

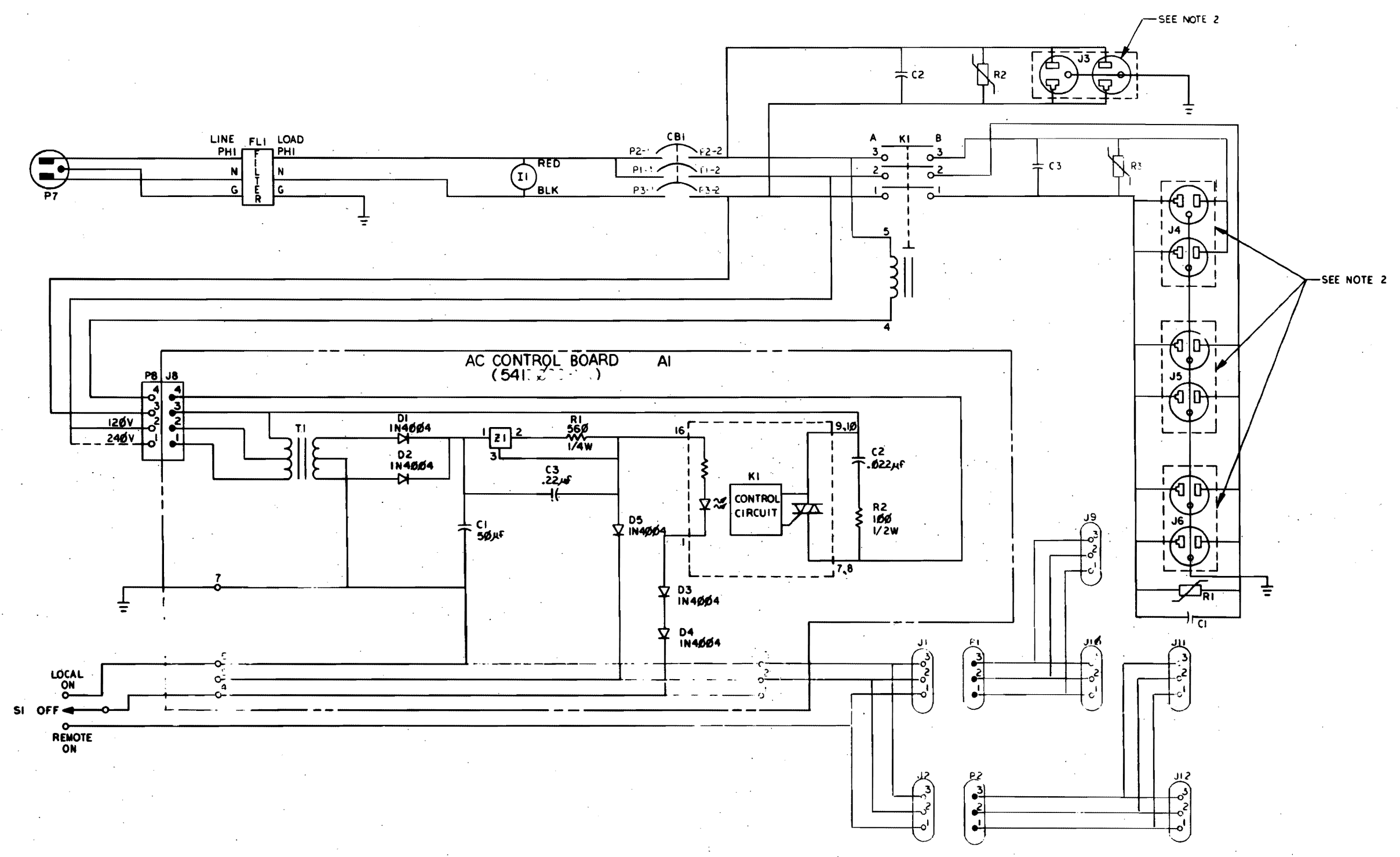
- NOTES:
1. RECEPTACLES J3-J6 ARE PICTORIALLY SHOWN FOR VARIATION 874-A ONLY. FOR VARIATIONS B & C, SEE PARTS LIST.
 2. RECEPTACLES J3-J6 ON SHEET 2 ARE PICTORIALLY SHOWN FOR VARIATION 874-D ONLY. FOR VARIATION E, SEE PARTS LIST.



FOR VARIATIONS 874 -A, B & C ONLY

DRN <i>A. Kola</i>	15/10/60	FIRST USED ON:	874	digital
CHK'D <i>J. Fuller</i>	10/6/60	TITLE	POWER CONTROL (874)	
ENG'G <i>J. G. G.</i>	2/20/60	SCALE	NONE	
PROD. <i>J. G. G.</i>	2/20/60	SHEET	1 OF 2	
NEXT HIGHER ASSY.		E-UA-874-0-0	SIZE CODE	D CS
		NUMBER	874-0-1	REV
		DWT.		A

THIS DRAWING AND SPECIFICATIONS HEREIN ARE THE PROPERTY OF DIGITAL EQUIPMENT CORPORATION AND SHALL NOT BE REPRODUCED OR COPIED OR USED IN WHOLE OR IN PART AS THE BASIS FOR THE MANUFACTURE OR SALE OF ITEMS WITHOUT WRITTEN PERMISSION. COPYRIGHT © 1960 DIGITAL EQUIPMENT CORPORATION

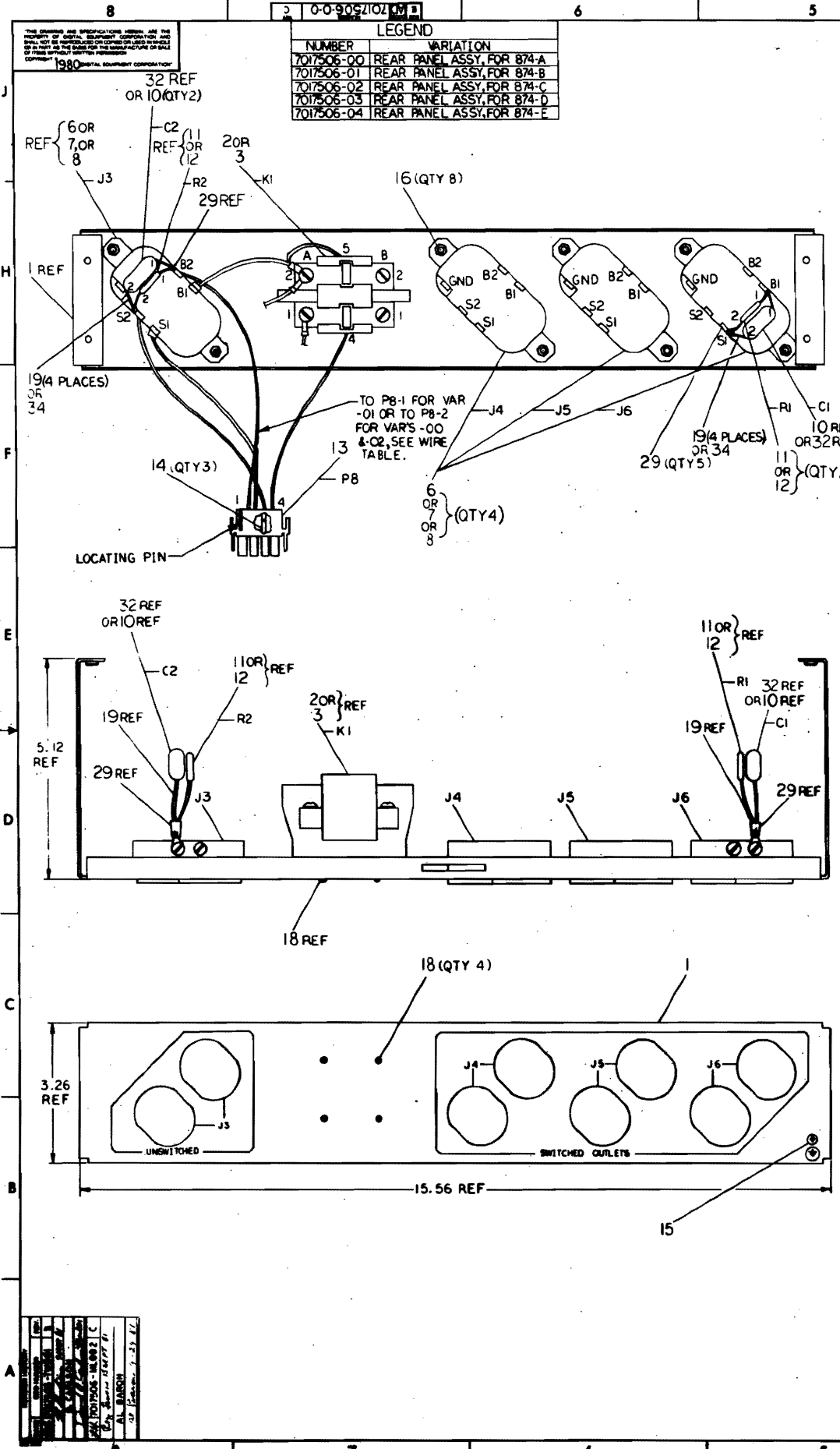


FOR VARIATIONS 874-D & E ONLY

REVISIONS		
CHK	CHANGE NO.	REV.

TITLE	POWER CONTROL (874)	SIZE CODE	D CS	NUMBER	874-0-1	REV	A
SCALE	NONE	SHEET	2 OF 2	DIST.			

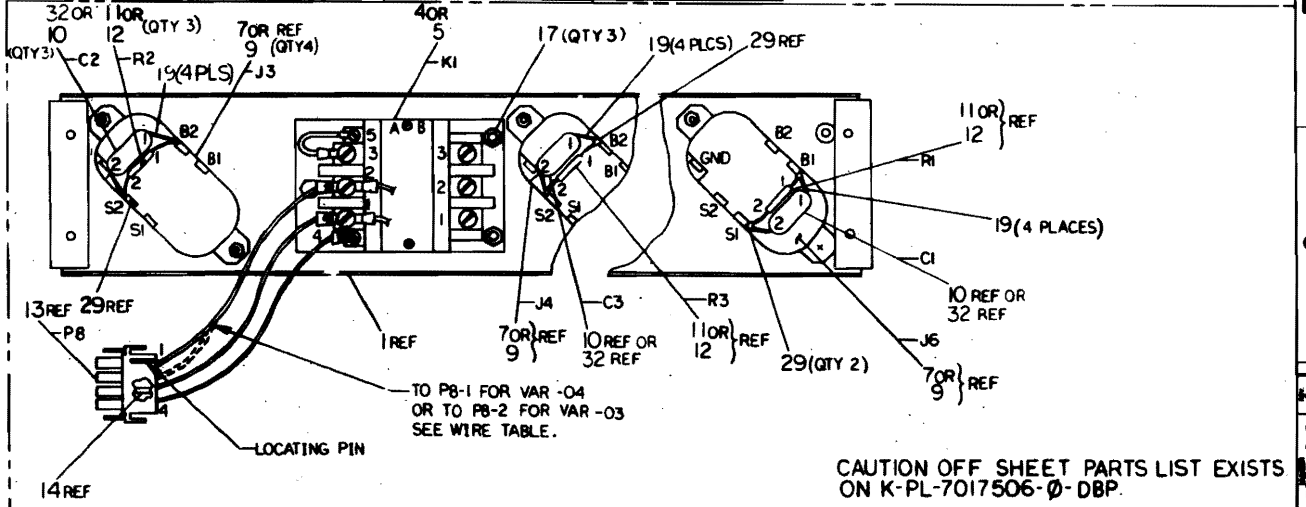
1 TW



WIRE TABLE

ITEM NO	DESCRIPTION	FROM		TO		PRECUT LENGTH	REMARKS
		CONN	WITH	CONN	WITH		
20	12 BLU	K1-A-1	26	J3-S1	30	10.0	VARIATIONS -00,-01,-02
20	12 BLU	K1-A-1	26	J3-B1	30	5.0	
22	14 BRN	K1-A-2	26	K1-5	28	4.0	
22	14 BRN	K1-A-2	27	K1-5	28	10.0	
23	18 BRN	K1-4	27	P8-4	13 & 14	7.0	VAR -00 & -02 ONLY
23	18 BRN	J3-S2	29	P8-3	13 & 14	7.0	
23	18 BRN	J3-S2	29	P8-2	13 & 14	7.0	VAR -01 ONLY
23	18 BRN	J3-S2	29	P8-1	13 & 14	7.0	VAR -01 ONLY
22	14 BRN	K1-B-2	27	J4-B2	28	4.0	VARIATIONS -00,-01,-02
20	12 BLU	K1-B-1	26	J4-S2	30	5.0	
21	14 BLU	J4-S1	28	J5-S2	28	5.0	
22	14 BRN	J4-B1	28	J5-B2	28	5.0	
21	14 BLU	J5-S1	28	J6-S2	28	5.0	VARIATIONS -01,-04 ONLY
22	14 BRN	J5-B1	28	J6-B2	28	5.0	
22	14 BRN	J5-B1	28	J6-B2	28	5.0	
22	14 BRN	J5-B1	28	J6-B2	28	5.0	
10 & 11		C1-1	19	J6-B1	29	SEE NOTE 1	VARIATIONS -00,-02,-03 ONLY
10 & 11		R1-1	19	J6-S1	29	SEE NOTE 1	VARIATIONS -01,-04 ONLY
32 & 12		C1-2	19	J6-B1	29	SEE NOTE 1	VARIATIONS -01,-04 ONLY
10 & 11		R1-2	19	J6-S1	29	SEE NOTE 1	VARIATIONS -00,-02,-03 ONLY
10 & 11		C2-1	19	J3-B2	29	SEE NOTE 1	VARIATIONS -00,-02,-03 ONLY
10 & 11		R2-1	19	J3-S2	29	SEE NOTE 1	VARIATIONS -01,-04 ONLY
32 & 12		C2-2	19	J3-B2	29	SEE NOTE 1	VARIATIONS -01,-04 ONLY
32 & 12		R2-2	19	J3-S2	29	SEE NOTE 1	VARIATIONS -01,-04 ONLY
20	12 BLU	K1-A-1	26	J3-S1	30	10.0	VARIATION -03,-04
20	12 BLU	K1-A-1	26	J3-B1	30	5.0	
22	14 BRN	K1-A-2	27	J3-B1	28	4.0	
22	14 BRN	K1-A-2	27	J3-B1	28	10.0	
23	18 BRN	K1-A-2	31	P8-1	13 & 14	7.0	VAR -04 ONLY
23	18 BRN	K1-A-2	31	P8-2	13 & 14	7.0	VAR -03 ONLY
24	18 BLU	K1-A-1	31	P8-3	13 & 14	7.0	VARIATION -03,-04
25	18 YEL	K1-A-4	31	P8-4	13 & 14	7.0	
25	18 BRN	K1-A-3	31	K1-5	31	3.0	
20	12 BLU	K1-B-1	26	J4-S2	30	5.0	
21	14 BLU	J4-S1	28	J5-S2	28	5.0	VARIATION -03 ONLY
22	14 BRN	K1-B-2	27	J5-B2	28	5.0	
22	14 BRN	K1-B-3	27	J4-B2	28	4.0	
22	14 BRN	J5-B1	28	J6-B2	28	5.0	
10 & 11		C3-1	19	J4-B2	29	SEE NOTE 1	VARIATION -03 ONLY
10 & 11		R3-1	19	J4-S2	29	SEE NOTE 1	VARIATION -04 ONLY
32 & 12		C3-2	19	J4-B2	29	SEE NOTE 1	VARIATION -04 ONLY
32 & 12		R3-2	19	J4-S2	29	SEE NOTE 1	VARIATION -04 ONLY

- NOTES:
- LEADS ON CAPACITOR (ITEMS 10 OR 32) AND VARISTOR (ITEMS 11 OR 12) TO BE APPROXIMATELY 1.38 IN. LONG. SEE WIRE TABLE.
 - LENGTHS IN WIRE TABLE ARE IN INCHES. TOLERANCES ARE ±.25 INCH.
 - REQUIRED TORQUE LEVELS:
 - 18:2 INCH LBS. FOR TERMINALS ON CONTACTOR K1 (ITEMS 2, 3, 4 OR 5).
 - 16:2 INCH LBS. FOR 8-32 SCREW CONNECTIONS ON OUTLETS J3 THROUGH J6 (ITEMS 6, 7, 8 OR 9).



CAUTION OFF SHEET PARTS LIST EXISTS ON K-PL-7017506-0-DBP.

DESCRIPTION	QUANTITY	UNIT	REVISION
REAR PANEL ASSY (874)	1	EA	1
7017506-0-0			

REAR PANEL ASSY (874)

7017506-0-0

LINE	ITEM	DOCUMENT NUMBER	PART NUMBER	DESCRIPTION	QUANTITY PER VARIATION				
					00	01	02	03	04
1	1	E-IA-7424070-0-0	7424070-00	PANEL, REAR (874)	1	1	1	1	1
2	2	A-PS-1214283-0-0	1214283-00	CONTACTOR, 20A, 2P, 120V C	1	-	1	-	-
3	3	A-PS-1214283-0-0	1214283-01	CONTACTOR, 20A, 2P, 240V C	-	1	-	-	-
4	4	A-PS-1211147-0-0	1211147-00	CONTACTOR, 30A, 3P DBL BRK, 600V, 1	-	-	-	1	-
5	5	A-PS-1211147-0-0	1211147-01	CONTACTOR, 30A, 3P DBL BRK, 600V, 2	-	-	-	-	1
6	6	A-PS-1214899-0-0	1214899-00	CONN, POWER 3PIN RCPT NEMA 5-15R	4	-	-	-	-
7	7	A-PS-1212265-0-0	1212265-00	CONN, POWER 3PIN RCPT NEMA 5-20R	-	-	4	4	-
8	8	A-PS-1211204-0-0	1211204-01	CONN, POWER 3PIN RCPT NEMA 6-15R	-	4	-	-	-
9	9	A-PS-1216885-0-0	1216885-00	CONN, POWER 3PIN RCPT NEMA 6-20R	-	-	-	-	4
10	10		1014430-01	.1 MFD 270V 20% N. POLYPROP	2	2	2	3	3
11	11		1311996-00	VARIATOR 150VAC VOLT TRANS SUP	2	-	2	3	-
12	12		1311996-02	VARIATOR 275VAC VOLT TRANS SUP	-	2	-	-	3
13	13		1212167-01	MATE-N-LOK 4POS UNIV HSG SKT	1	1	1	1	1
14	14		1212170-00	MATE-N-LOK SKT UNIV 20-14AWG REE	3	3	3	3	3
15	15		9009228-10	SCREW, PAN, PHIL, SEMS 10-32X 3/8	1	1	1	1	1
16	16		9006560-00	NUT, KEP 6-32 X5/16AF	8	8	8	8	8
17	17		9006565-00	NUT, KEP 10-32X 3/8 AF	-	-	-	3	3
18	18		9009643-02	SCREW, PAN, PHIL, SEMS 4-40X .250	4	4	4	-	-
19	19		9107267-11	TUBING, THIN WALL, .034ID UL	A/R	A/R	A/R	A/R	A/R
20	20		9107380-66	WIRE, STRND, 12AWG, IPVC UL3317	A/R	A/R	A/R	A/R	A/R
21	21		9107787-66	WIRE, STRND, 14AWG UL3317 B	A/R	A/R	A/R	A/R	A/R
22	22		9107787-11	WIRE, STRND, 14AWG UL3317 B	A/R	A/R	A/R	A/R	A/R
23	23		9107786-11	WIRE, STRND, 18AWG UL1430 B	A/R	A/R	A/R	A/R	A/R
24	24		9107786-66	WIRE, STRND, 18AWG UL1430 B	A/R	A/R	A/R	A/R	A/R
25	25		9107786-44	WIRE, STRND, 18AWG UL1430 Y	0	0	0	A/R	A/R
26	26		9009695-07	TERM, SPADE INSUL. 1POS 12-10AWG Y	4	4	4	3	3
27	27		9009695-08	TERM, SPADE INSUL. 1POS 16-14AWG B	2	2	2	5	5
28	28		9009695-00	TERM, SPADE INSUL. 1POS 16-14AWG B	10	10	10	11	11
29	29		9009695-05	TERM, SPADE INSUL. 1POS 22-16AWG R	6	6	6	6	6
30	30		9009695-02	TERM, SPADE INSUL. 1POS 12-10AWG Y	3	3	3	3	3

REVISION HISTORY		BASIC PART NO: 7017506		DRN: ANGEL COLON		DATE: 04-APR-80		D I G I T A L	
ENG:	ECO NUMBER	REV	SECTION A OF A	CHK'D: ANGEL COLON		DATE: 04-APR-80		TITLE PARTS LIST	
DC	7017506-TW001	B	(A) 00,01,02,03,04	DES.ENG.: PHIL BARTH		DATE: 04-APR-80		REAR PANEL ASSY (874)	
			(B)	RESP.ENG.: DAVE CARLSON		DATE: 04-APR-80		DOCUMENT NUMBER	
			(C)	MFG.ENG.: G ARMBRUSTER		DATE: 04-APR-80		SIZE!CODE! NUMBER REV	
			(D)	ASSEMBLY NUMBER:		TOP DOCUMENT NUMBER:		FILE NAME: EDIT #	
			(E)	E-AD-7017506-0-0		E-UA-874-0-0BP		Z1252.PLS 15	
			(F)						

"THIS DRAWING AND SPECIFICATIONS HEREIN, ARE THE PROPERTY OF DIGITAL EQUIPMENT CORPORATION AND SHALL NOT BE REPRODUCED OR COPIED OR USED IN WHOLE OR IN PART AS THE BASIS FOR THE MANUFACTURE OR SALE OF ITEMS WITHOUT WRITTEN PERMISSION. COPYRIGHT (C) 1981. DIGITAL EQUIPMENT CORPORATION"

AUTOMATED BY PRTLST.3L(37)

PARTS LIST

SHEET A2 OF A2

LINE ITEM DOCUMENT NUMBER

PART NUMBER

DESCRIPTION

QUANTITY PER VARIATION
00 01 02 03 04

31 31

9007970-00

TERM QUICK 1POS INSULATED 22-18

- - - 5 5

D	I	G	I	T	A	L	TITLE	REAR PANEL ASSY (874)	SECTION A OF A	SIZE	CODE	DOCUMENT NUMBER	REV
										K	PL	7017506-0-DBP	B

LINE	ITEM	DOCUMENT NUMBER	PART NUMBER	DESCRIPTION	QUANTITY PER VARIATION				
					00	01	02	03	04
1	1	E-IA-7424069-0-0	7424069-00	PANEL, FRONT (874)	1	1	1	1	1
2	2	A-PS-1212124-0-0	1212124-04	CKT BKR 15.0 A 240V 2P SERIES TR	1	1	0	0	0
3	3	A-PS-1212124-0-0	1212124-05	CKT BKR 20.0 A 240V 2P SERIES TR	0	0	1	0	0
4	4	A-PS-1211196-0-0	1211196-02	CKT BKR 20,20,30A 277V 3P SERIES	0	0	0	1	1
5	5	A-PS-1213070-0-0	1213070-00	FILTER,LINE 110-220V,50-60HZ 112	1	1	1	1	1
6	6	A-PS-1205303-0-0	1205303-00	LAMP, PILOT IND DEVICES #1020A	1	0	1	1	0
7	7	A-PS-1202556-0-0	1202556-00	LAMP, PILOT IND DEVICES #1020B	0	1	0	0	1
8	8	D-AD-5414605-0-0	5414605-00	AC CONTROL BOARD	1	1	1	1	1
9	9	D-IA-7017698-0-0	7017698-00	CANCEL	1	1	1	1	1
10	10	C-IA-7422924-0-0	7422924-00	COVER PLATE	1	1	1	0	0
11	11		1215566-00	CLAMP, CABLE	1	1	1	0	0
12	12		1215566-01	CLAMP, CABLE	0	0	0	1	1
13	13		9010174-01	SCREW, SEMS, PHILLIPS PAN HD 8-3	2	2	2	2	2
14	14		9010174-00	SCREW, SEMS, PHILLIPS PAN HD 6-3	12	12	12	12	12
15	15		9010074-00	SCREW, TAPPING, TYPE F, HEX, WASH,	2	2	2	2	2
16	16		9006565-00	NUT, KEP, 10-32X 3/8 AF	2	2	2	2	2
17	17		9009695-07	TERM, SPADE INSUL. 1POS 12-10AWG Y	1	1	1	1	1
18	18		9009695-02	TERM, SPADE INSUL. 1POS 12-10AWG Y	1	1	1	1	1
19	19		9009695-00	TERM, SPADE INSUL. 1POS 16-14AWG B	1	1	1	2	2
20	20		9009695-08	TERM, SPADE INSUL. 1POS 16-14AWG B	1	1	1	1	1
21	21		9007926-01	TERM RING 1POS INSULATED, 12-10	2	2	2	2	2
22	22		9107778-54	WIRE, STRND, 12AWG, IPVC UL3317	A/R	A/R	A/R	A/R	A/R
23	23		9107380-66	WIRE, STRND, 12AWG, IPVC UL3317	A/R	A/R	A/R	A/R	A/R
24	24		9107787-11	WIRE, STRND, 14AWG UL3317 B	A/R	A/R	A/R	A/R	A/R
25	25	A-PS-3612680-0-0	3612680-00	DECAL, GROUND SIGN PER 3E6 *	1	1	1	1	1
26	26		9006636-00	WASHER, LOCK, INT, .3800D X .200ID	2	2	2	2	2
27	27		9009695-05	TERM, SPADE INSUL. 1POS 22-16AWG R	2	2	2	2	2
28	28		1217944-00	GROMMET 1.87ID X 2.31ID X .06WID	1	1	1	1	1

REVISION HISTORY		BASIC PART NO: 7017507		DRN:	PEDRO ORTIZ	DATE:	29-APR-80	D I G I T A L			
ENG	ECO NUMBER	REV	SECTION A OF A	CHK'D:	ANGEL COLON	DATE:	29-APR-80	TITLE PARTS LIST			
---	INITIAL	A	SECTION. VARIATION INDEX					FRONT PANEL ASSY (874)			
			[A] 00,01,02,03,04								
			[B]	DES.ENG.:	PHIL BARTH	DATE:	29-APR-80				
			[C]					DOCUMENT NUMBER			
			[D]	RESP.ENG.:	D CARLSON	DATE:	29-APR-80	SIZE	CODE	NUMBER	REV
			[E]	MFG.ENG.:	G ARMBRUSTER	DATE:	29-APR-80	K	PL	7017507-0-DBP	A
			[F]	ASSEMBLY NUMBER:	E-AD-7017507-0-0	TOP DOCUMENT NUMBER:	E-UA-874-0-0	FILE NAME:	Z1253.PLS	EDIT #:	6

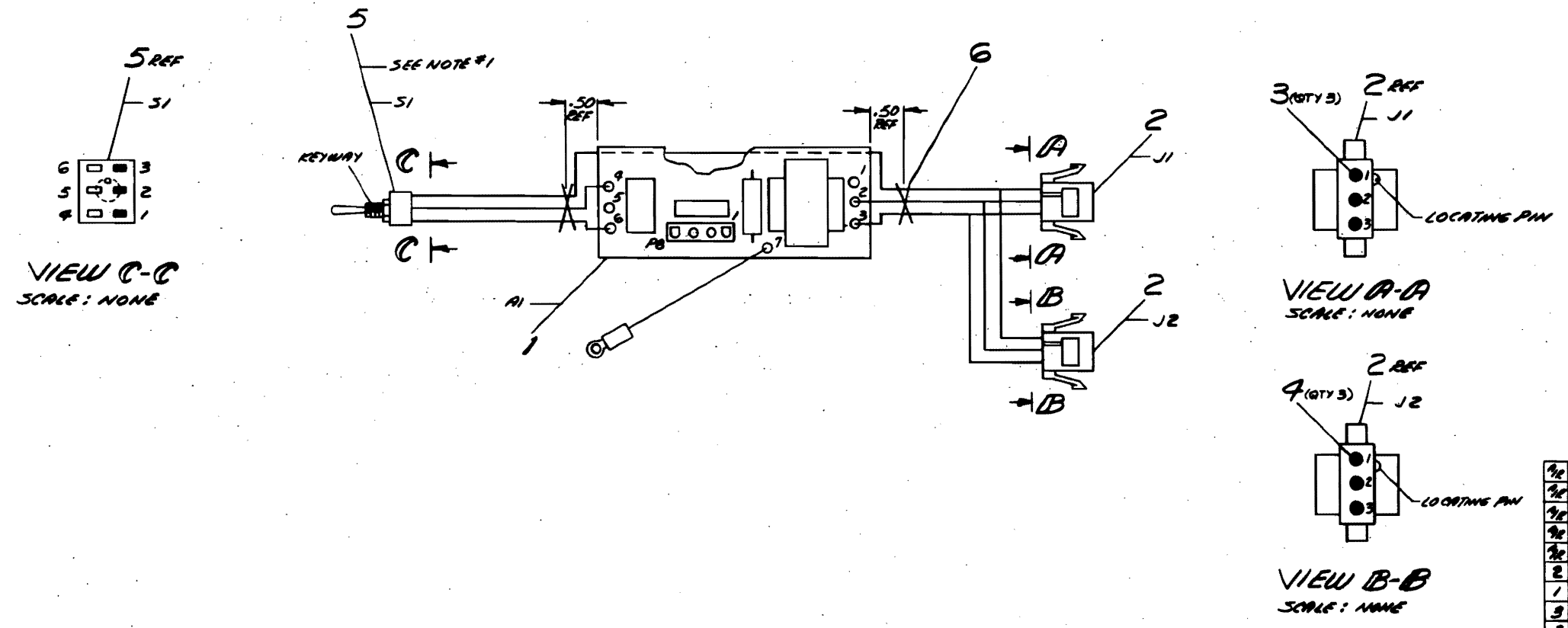
*THIS DRAWING AND SPECIFICATIONS HEREIN, ARE THE PROPERTY OF DIGITAL EQUIPMENT CORPORATION AND SHALL NOT BE REPRODUCED OR COPIED OR USED IN WHOLE OR IN PART AS THE BASIS FOR THE MANUFACTURE OR SALE OF ITEMS WITHOUT WRITTEN PERMISSION.
 COPYRIGHT (C) 1980. DIGITAL EQUIPMENT CORPORATION *

TW

THIS DRAWING AND SPECIFICATIONS, HEREIN, ARE THE PROPERTY OF DIGITAL EQUIPMENT CORPORATION AND SHALL NOT BE REPRODUCED OR COPIED IN WHOLE OR IN PART IN ANY MANNER FOR THE DISSEMINATION OR SALE OF ITEMS WITHOUT WRITTEN PERMISSION. COPYRIGHT © 1978, DIGITAL EQUIPMENT CORPORATION

WIRE TABLE							
ITEM NO.	DESCRIPTION	COLOR	FROM		TO		CUT LENGTH
			CONNECTION	W/TH	CONNECTION	W/TH	
11	22	GRN	A1-4	50L	S1-2	30L	3 IN
10		VIO	A1-6	50L	S1-1	50L	3 IN
8		BLK	A1-2	50L	J1-2	#3	3 IN
8		BLK	J2-2	#4	J1-2	#3	3 IN
7		GRN	A1-3	50L	J1-3	#3	3 IN
7		GRN	J2-3	#4	J1-3	#3	3 IN
9		RED	S1-3	50L	J1-1	#3	3.75 IN
9	22	RED	J2-1	#4	J1-1	#3	3 IN

NOTES:
1. HARDWARE FOR MOUNTING SWITCH IS SUPPLIED WITH ITEM #5 (SWITCH, TOGGLE DPDT).



VIEW C-C
SCALE: NONE

VIEW A-A
SCALE: NONE

VIEW B-B
SCALE: NONE

QTY	DESCRIPTION	ENGL. PART NO.	ITEM NO.
1/2	WIRE, 22 AWG (GRN)	9107350-33	11
1/2	WIRE, 22 AWG (VIO)	9107350-77	10
1/2	WIRE, 22 AWG (RED)	9107350-22	9
1/2	WIRE, 22 AWG (BLK)	9107350-00	8
1/2	WIRE, 22 AWG (GRN)	9107350-55	7
2	CABLE	9007031-00	6
1	SWITCH, TOGGLE DPDT	A-PS-121076-00	5
3	SOCKET, REMOVABLE CONTACT	A-PS-120373-03	4
3	SOCKET, REMOVABLE CONTACT	A-PS-120373-00	3
2	CONN. MOUNTING BOARD (3 AW)	A-PS-120350-03	2
1	AC CONTROL BOARD	D-00-5413087-11	1

UNLESS OTHERWISE SPECIFIED DIMENSIONS ARE IN INCHES	CLASS OF ACCURACY	NOMINAL DIMENSION RANGE	CLASS
ASSEMBLY	AS 20	0.000 - 0.000	0.000
SURFACE QUALITY	CHECK QMS	0.000 - 0.000	0.000
QUANTITY & VARIATION	PREFERRED	0.012	0.010
THIRD ANGLE PROJECTION	REMOVE BURRS AND BREAK SHARP CORNERS	0.001	0.001
DO NOT SCALE DIMS	NEXT HIGHER ASSY.	0.001	0.001
MATERIAL SEE PARTS LIST	FRSH	0.001	0.001

QUANTITY & VARIATION

THIRD ANGLE PROJECTION

REMOVE BURRS AND BREAK SHARP CORNERS

DO NOT SCALE DIMS

MATERIAL SEE PARTS LIST

FRSH

FIRST USED ON 871

TITLE CONTROL BOARD ASSY

SIZE CODE D AD 7015605-0-0

NUMBER 7015605-0-0

REV.

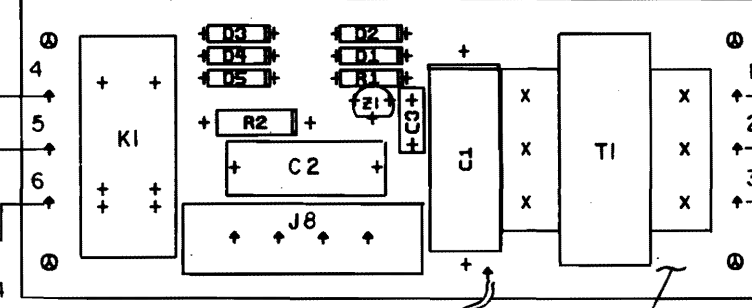
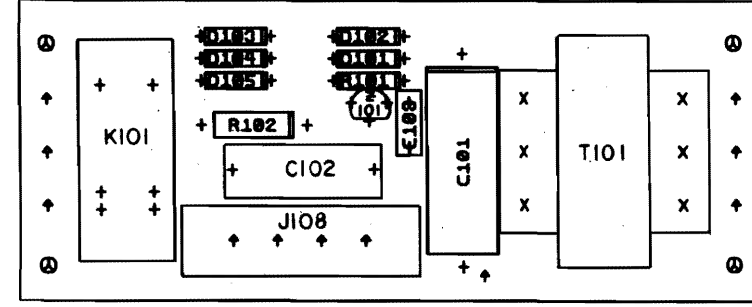
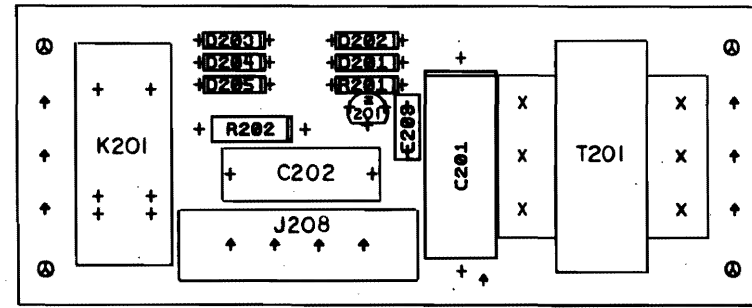
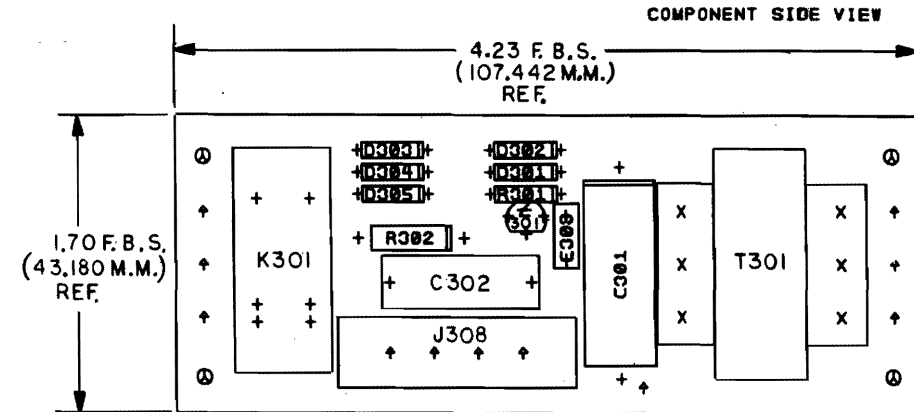
1 OF 1

MK 1

REV.	
CHG	

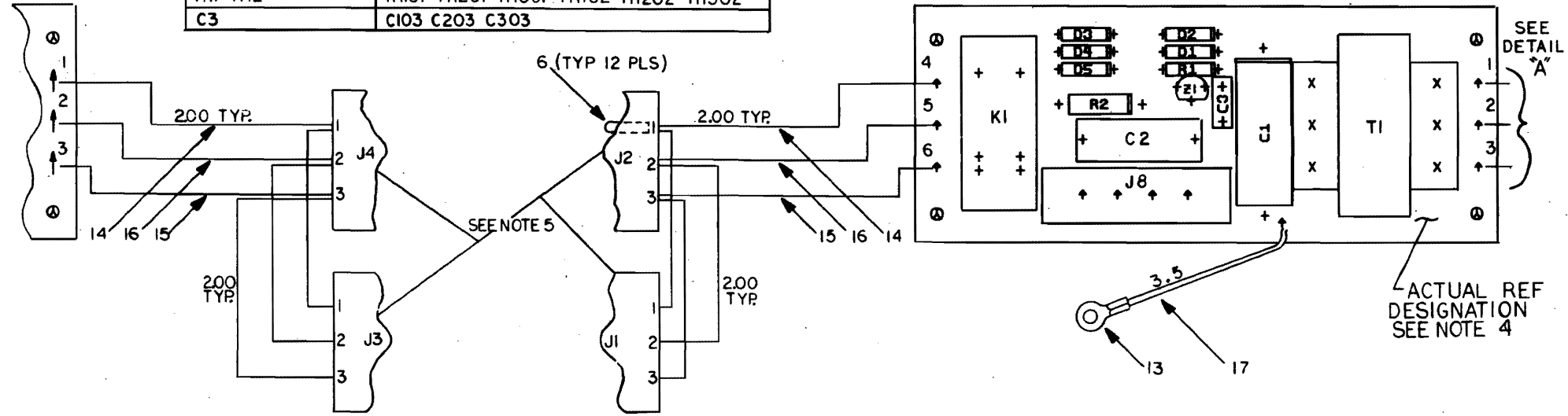
THIS DRAWING AND SPECIFICATIONS, HEREIN, AND THE INFORMATION CONTAINED THEREIN ARE UNCLASSIFIED EXCEPT WHERE SHOWN OTHERWISE AND SHALL REMAIN UNCLASSIFIED EXCEPT WHERE SHOWN OTHERWISE. THIS INFORMATION IS UNCLASSIFIED EXCEPT WHERE SHOWN OTHERWISE. DATE 11/19/77 BY [Signature]

1978



REFERENCE	DESIGNATION	CHART
ACTUAL REF DES	SUPERFICIAL REF DES	
CI C2	C101 C201 C301	C102 C202 C302
DI D2	D101 D201 D301	D102 D202 D302
D3 D4	D103 D203 D303	D104 D204 D304
D5	D105 D205 D305	
J ⁹	J108 J208 J308	
KI	K101 K201 K301	
RI R2	R101 R201 R301	R102 R202 R302
TI	T101 T201 T301	
ZI	Z101 Z201 Z301	
TH1 TH2	TH101 TH201 TH301	TH102 TH202 TH302
C3	C103 C203 C303	

DETAIL "A"



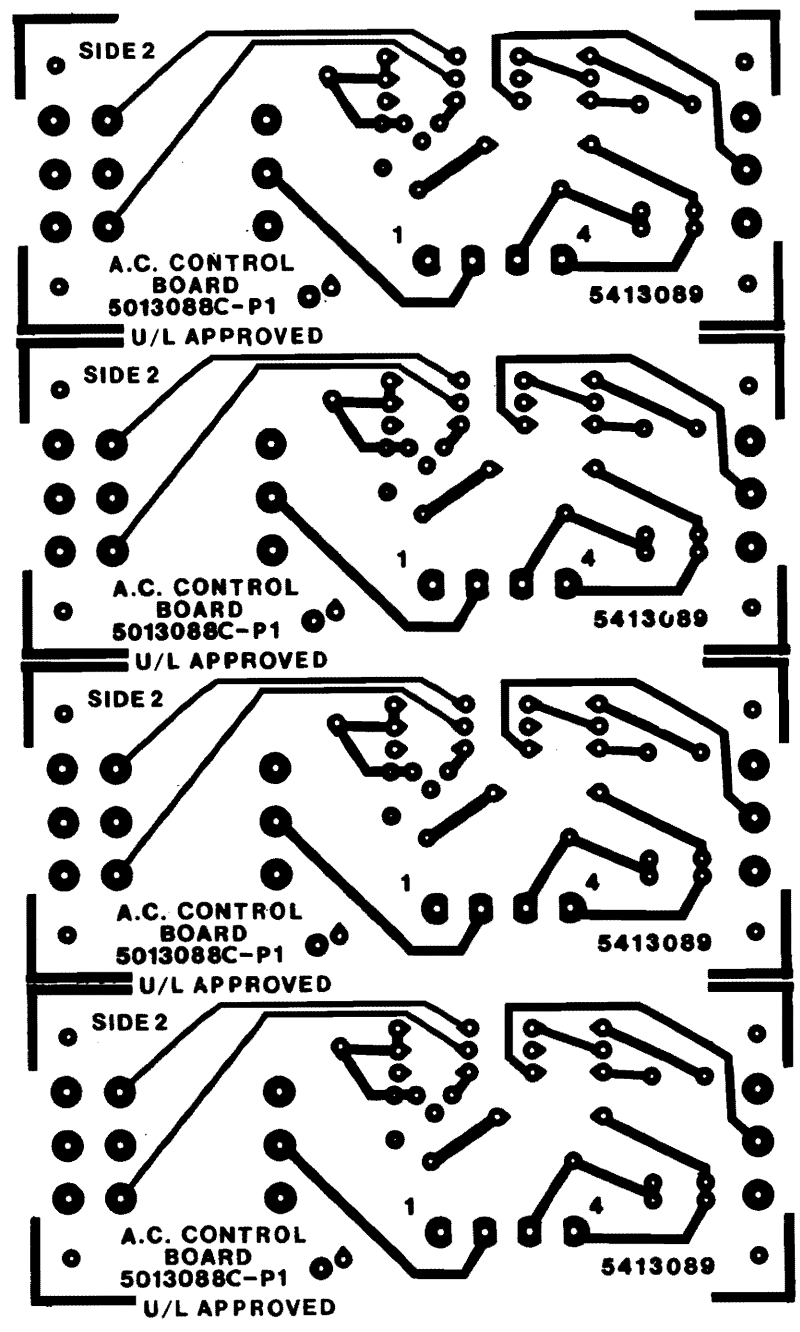
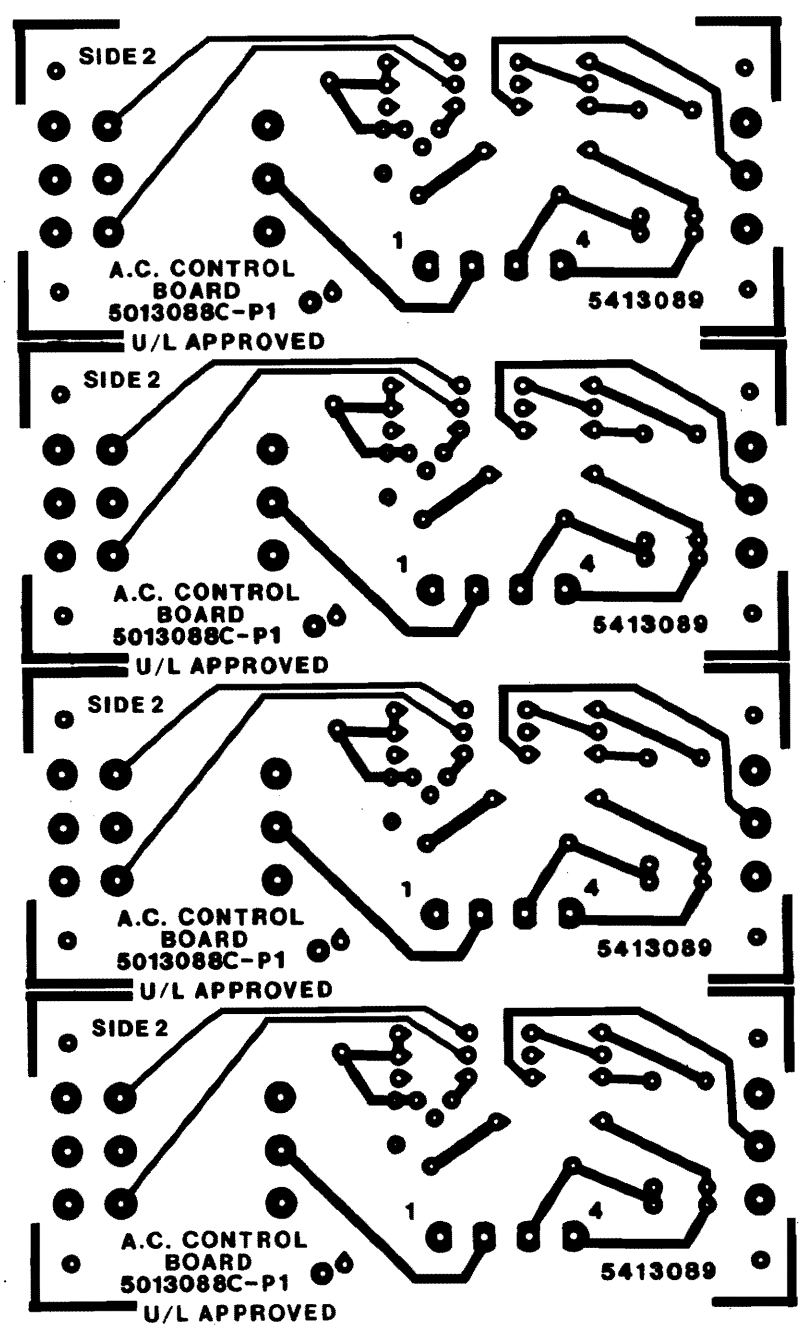
NOTES: 1. THIS BOARD REQUIRES U/L APPROVAL.
 2. DO NOT SLIT BOARD MUST BE SHEARED.
 3. REFER TO PARTS LIST FOR IDENTIFICATION OF NUMBERED ITEMS.
 4. MULTI-REF DESIGNATIONS ARE USED TO ACCOMMODATE PNL INS TECHNIQUES—SEE CHART FOR REF.
 5. J1 J2 J3 J4 ARE NOT USED ON YA VARIATION.

CHANGE NO	REV	DATE	BY	CHK'D
1	ML004		EVANS	E
2			W. BAUSHA	
3				

ETCH REV. C-PI
P.C. DESIGN DATA BASE REV. C

SIGNATURES	DATE	TITLE
DRN. STU EVANS	7-27-78	digital
CHK'D. [Signature]	1-9-79	
ENG. [Signature]	1/9/79	
PROJ. ENG. [Signature]	1/9/79	A.C. CONTROL BOARD
PROD. [Signature]	1/9/79	
SCALE 2/1	SIZE CODE	NUMBER
SHT. 1 OF 3	0 UA 5413089-0-0	REV E
NEXT HIGHER ASSY. B-DD-5413089-0-0		

"THIS DRAWING AND SPECIFICATIONS, HEREIN ARE THE PROPERTY OF DIGITAL EQUIPMENT CORPORATION AND SHALL NOT BE REPRODUCED OR COPIED OR USED IN WHOLE OR IN PART AS THE BASIS FOR THE MANUFACTURE OR SALE OF ITEMS WITHOUT WRITTEN PERMISSION OF DIGITAL EQUIPMENT CORPORATION"
 1979



REVISIONS		
CHK	CHANGE NO.	REV.

TITLE	D UA 5413089-0-0	NUMBER	5413089-0-0	REV.	E
SCALE	2:1	SHEET	3 OF 3	DIST.	

DUA 5413089-0-0

LINE	ITEM	DOCUMENT NUMBER	PART NUMBER	DESCRIPTION	QTY	PER	VARIATION	REFERENCE DESIGNATOR
					00	YA		
1	1	D-MD-5013088-0-0	5013088-00	DRILL AND ETCH BRD	1	1		
2	2		1000080-00	50 MFD 50V +75-10% AL EL	1	1		C1
3	3		1014430-00	.022 MFD 270V 10% M.POLYPROP	1	1		C2
4	4		1105796-00	1N 4004 PIV=400 I= 1A DQ41 SP	5	5		D1-D5
5	5		1209350-03	MATE-N-LOK 3POS COMM HSG, SKT	4	0		J1-J4
6	6		1209379-00	MATE-N-LOK SKT COMM 20-14AWG STR	12	0		
7	7		1212297-01	MATE-N-LOK 4PIN UNIV HEADER	1	1		J8
8	8		1214380-00	RLY, G.P., SPST, 0.5A	1	1		K1
9	9		1300228-00	100.0 .50 W 5.0 % CC	1	1		R2
10	10		1301890-00	560.0 .25 W 5.0 % CC	1	1		R1
11	11		1612342-00	XFMR P=AB S=48CT	1	1		T1
12	12		1914471-00	78LOB VOLT REG, FIX +8V	1	1		Z1
13	13		9007930-00	TERM RING 1POS INSULATED, 22-16	1	1		
14	14		9107360-66	WIRE, STRND, 18AWG, IPVC UL1429	A/R	0		
15	15		9107360-77	WIRE, STRND, 18AWG, IPVC UL1429	A/R	0		
16	16		9107360-88	WIRE, STRND, 18AWG, IPVC UL1429	A/R	0		
17	17		9107410-54	WIRE, STRND, 18AWG, IPVC UL1429	A/R	A/R		
18	18		1010274-00	.22 MFD 50V +80-20% Z5U CER	1	1		C3

19 NOTE: REFER TO DWG. D-UA-5413089-0-0, REV.A FOR ADDITIONAL INSERTION CRITERIA.

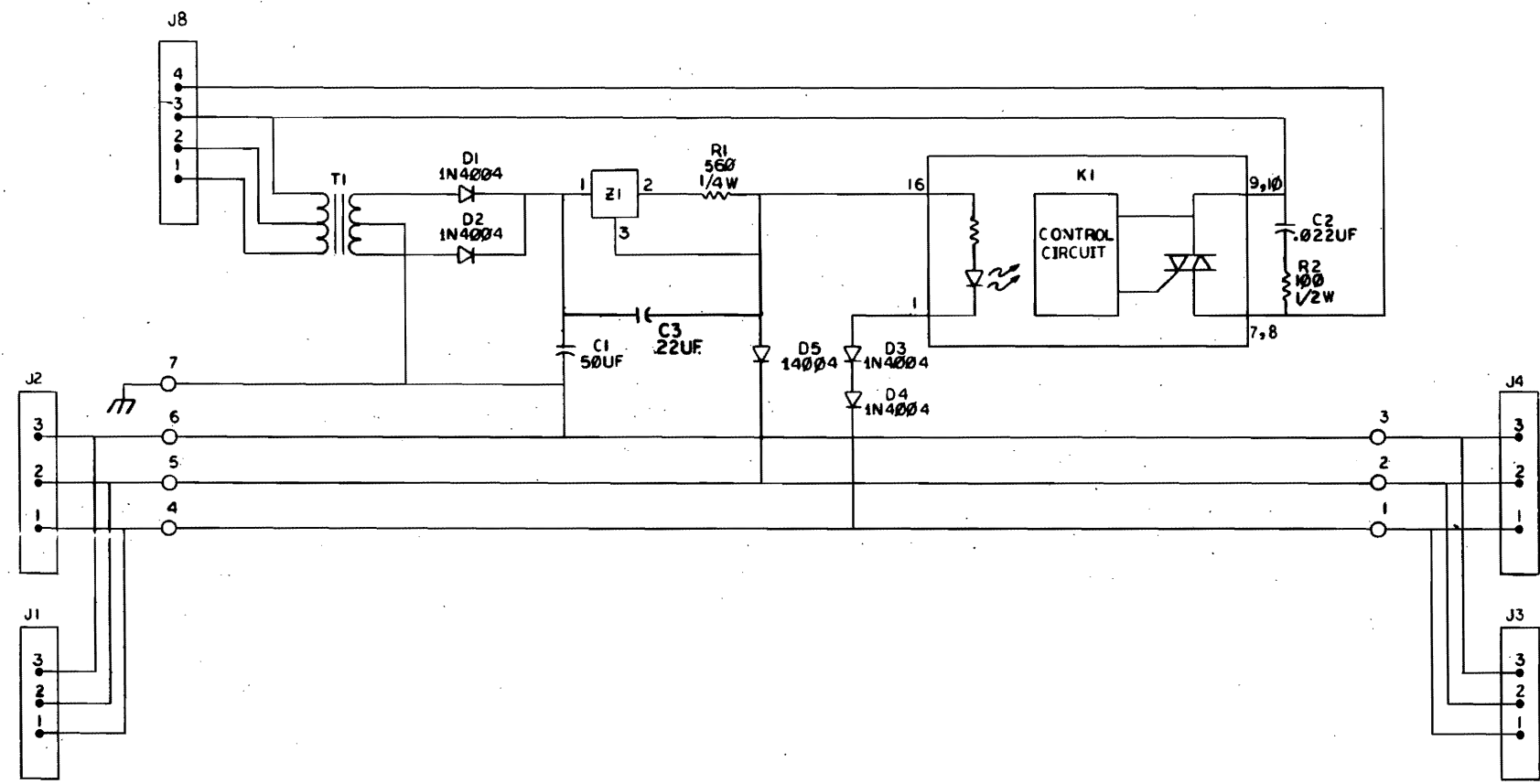
REVISION HISTORY		BASIC PART NO: 5413089		DRN: A.COLON	DATE: 14-MAR-78	D I G I T A L	
ENG: ECO NUMBER	REV	SECTION A OF A	SECTION VARIATION INDEX	CHK'D: R.GLEEZEN	DATE: 14-MAR-78	TITLE PARTS LIST	
KIT: 00002	C	[A] 00, YA	[B]	DES. ENG: L.DOIRON	DATE: 14-MAR-78	A.C. CONTROL BOARD	
R.R: 00003	D	[C]	[D]	RESP. ENG.: R.KENNEDY	DATE: 14-MAR-78	DOCUMENT NUMBER	
C.L: 5413089-ML004	E	[E]	[F]	MFG. ENG.: B.MANSON	DATE: 14-MAR-78	K	PL 5413089-0-DBP
		[G]	[H]	ASSEMBLY NUMBER:	TOP DOCUMENT NUMBER:		FILE NAME: EDIT #
		[I]	[J]	D-UA-5413089-0-0			Z0195E.PLS 12
		[K]	[L]				
		[M]	[N]				

"THIS DRAWING AND SPECIFICATIONS HEREIN, ARE THE PROPERTY OF DIGITAL EQUIPMENT CORPORATION AND SHALL NOT BE REPRODUCED OR COPIED OR USED IN WHOLE OR IN PART AS THE BASIS FOR THE MANUFACTURE OR SALE OF ITEMS WITHOUT WRITTEN PERMISSION. COPYRIGHT (C) 1981. DIGITAL EQUIPMENT CORPORATION"

THE DRAWING AND SPECIFICATIONS HEREIN ARE THE PROPERTY OF DIGITAL EQUIPMENT CORPORATION AND SHALL NOT BE REPRODUCED OR COPIED OR USED IN WHOLE OR IN PART AS THE BASIS FOR THE MANUFACTURE OR SALE OF ITEMS WITHOUT WRITTEN PERMISSION. COPYRIGHT © 1977, DIGITAL EQUIPMENT CORPORATION

D CS 5413089-0-1 2

NOTES:
1. CONNECTORS J4, J3, J2, J1 ARE NOT USED ON YA VARIATION.



REV.	REV.	REV.	REV.	REV.	REV.	REV.	REV.	REV.	REV.
1	2	3	4	5	6	7	8	9	10
5413089-1	5413089-2	5413089-3	5413089-4	5413089-5	5413089-6	5413089-7	5413089-8	5413089-9	5413089-10
R. KENNEDY	R. KENNEDY	R. KENNEDY	R. KENNEDY	R. KENNEDY	R. KENNEDY	R. KENNEDY	R. KENNEDY	R. KENNEDY	R. KENNEDY

DWG. DATE: 7/6/77	FIRST LISTED ON: H765
CHKD. DATE: 7/12/77	TITLE: A.C. CONTROL BOARD
ENGR. DATE: 7/12/77	PROD. ENGR. DATE: 7/12/77
SCALE: NONE	SIZE CODE: D CS 5413089-0-1
SHEET: 1	OF: 1