











8

7

6

5

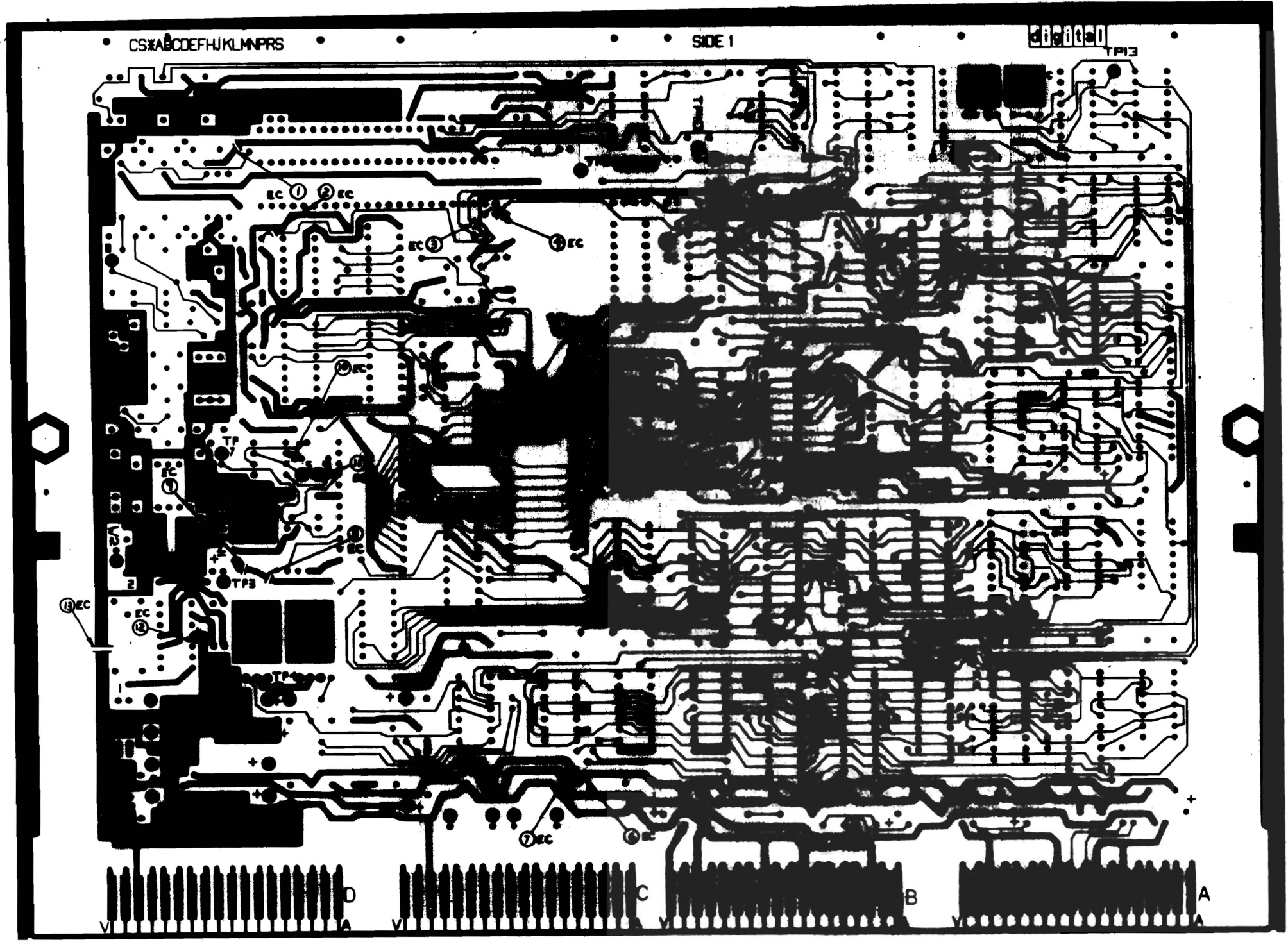
4

3

D U A A012-0-0 2

975

D  
C  
B  
A



D  
C  
B  
A

D U A A012-0-0

REVISIONS		
CHK	CHANGE NO	REV

TITLE	SIZE CODE	NUMBER	REV.
A-D FOR 1103	D U A	A012-0-0	D
SCALE 2/1	SHEET 2 OF 4	DIST.	

8

7

6

5

4

3

2

1

8

7

6

5

4

3

D U A A012-0-0 2

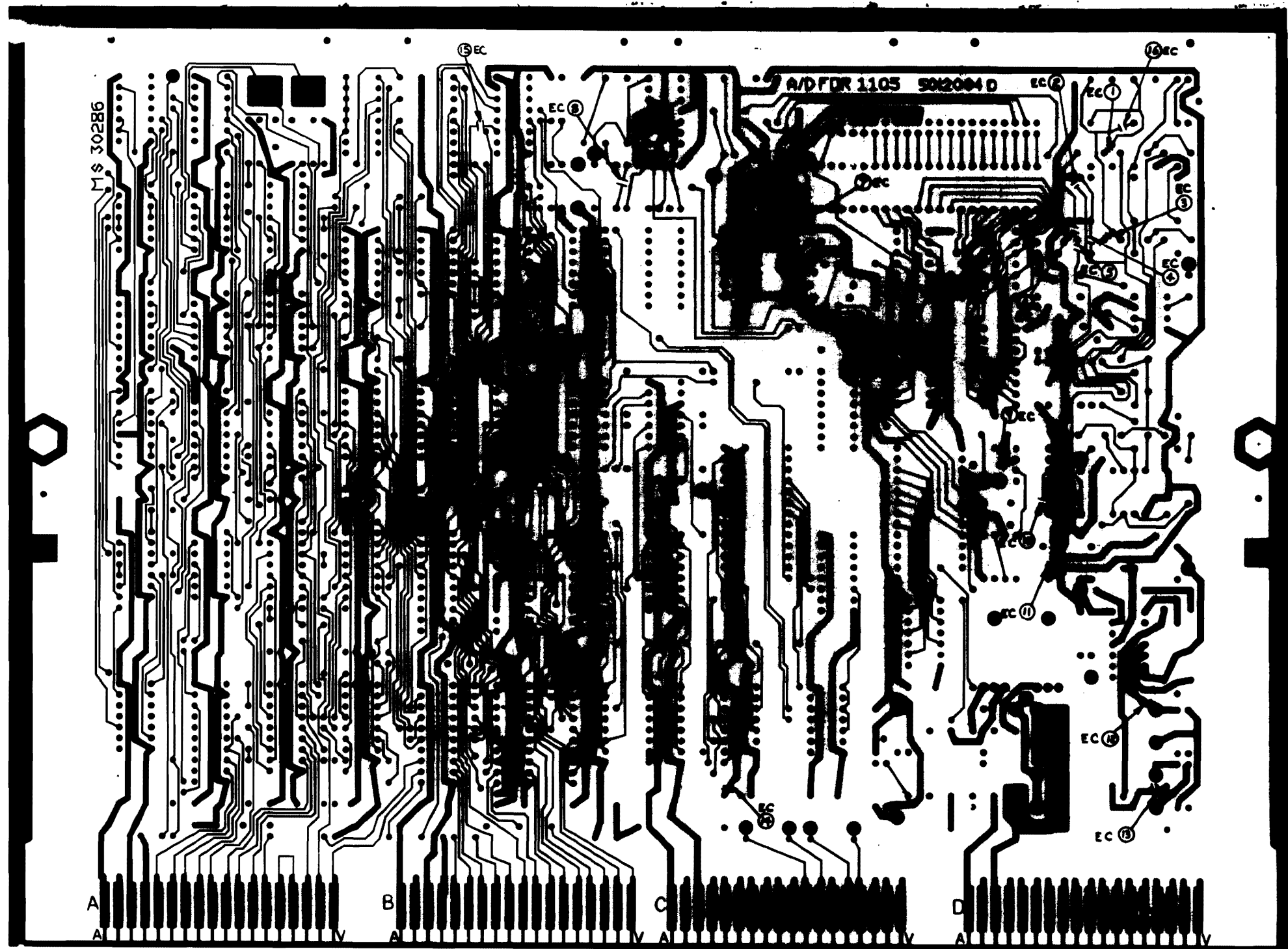
Q1975

D

C

B

A



C

B

A

D U A A012-0-0

REV. NO.		
CHK	CHANGE NO.	REV.

TITLE	SIZE CODE	NUMBER	REV.
A-D FOR 1103	D U A	A012-0-0	D
SCALE 2/1	SHEET 3 OF 4	DIST	

8

7

6

5

4

3

2

1



DIGITAL EQUIPMENT CORPORATION

PARTS LIST

QUANTITY / VARIATION

NOTES: 1. THE FOLLOWING ARE SPARES:  
R21 THRU R28, R53, R59, R87  
R36

MADE BY RW Counter  
DATE 22 APR 76  
ENG [Signature]  
DATE 6 JULY 76

CHECKED [Signature] SECTION  
DATE 22 APR 76  
ISSUED SECTION  
DATE 6 JULY 76

ITEM NO.	DRAWING NO.	PART NO.	DESCRIPTION	QTY	UNIT	REF. DESIGNATION
1	D-MD-5012094-0-0	5012094	ETCH CIRCUIT BOARD	1		
2		1010274	CAP. .22uf 50V	48		C11 THRU C38, C41, C43, C44, C81 THRU C83.
3		1004812	CAP. 15uf 20V 10%	6		C38, C39, C42, C45, C52, C53
4		1005306	CAP. .68uf 35V 10%	1		C72, C73 THRU C80, C82, C83, C84
5		1005335	CAP. 39uf 20V 10%	4		C46, C47, C48 C73
6		1002433	CAP. 22uf 35V 20%	3		C49 THRU C51
7		1000024	CAP. 470pf 100V 5%	1		C54
8		1000027	CAP. 820pf 100V 5%	3		C56, C65
9		1000020	CAP. 180pf 100V 5%	1		C57
10		1000021	CAP. 220pf 100V 5%	2		C58, C59
11		1001776	CAP. 1uf 35V 10%	1		C60
12		1005820	CAP. 22pf 100V 5%	1		C66
13		1009939-01	CAP. .0022uf 100V 10%	1		C67
14		1010031-03	CAP. .22uf 50V 10%	1		C71
15		1602254	INDUCTOR 22uh	1		D3
16		1105275	DIODE D672 SW	21		D2, D3, D4, D6, D7, D23 THRU D32, D34, D35 D2F, D17, D18, D20,
17		1110232	DIODE MCL 1304 4MA	2		D10, D33
18		1302685	RES 905 1/4W RN55D-F	1		R7
19		1109991-00	DIODE IN754A 6.8V 5%	1		D14
20		1910010-00	I.C. DEC 2501	2		D15, D16

E.C.D. NO. 00001

THIS DRAWING AND SPECIFICATIONS, HEREIN, ARE THE PROPERTY OF DIGITAL EQUIPMENT CORPORATION AND SHALL NOT BE REPRODUCED OR COPIED OR USED IN WHOLE OR IN PART AS THE BASIS FOR THE MANUFACTURE OR SALE OF ITEMS WITHOUT WRITTEN PERMISSION. COPYRIGHT © 1976 DIGITAL EQUIPMENT CORPORATION.

TITLE: A-D FOR 1103

ASSY NO.: D-UA-A012-0-0

SHEET 1 OF 6

SIZE CODE: B PL

NUMBER: A012-0-0

REV: D

DIGITAL EQUIPMENT CORPORATION

PARTS LIST

QUANTITY / VARIATION

NOTES:

MADE BY *RW Counter* CHECKED *H. H. H. H. H.* SECTION  
 DATE *22 APR 76* DATE *22 APR 76*  
 ENG *Asst. Engrs* PROD *R. W. H. H. H.* ISSUED SECTION  
 DATE *6 JULY 76* DATE *6 Jul 76*

ITEM NO.	DRAWING NO.	PART NO.	DESCRIPTION	QTY	UNIT	REF. DESIGNATION
21		1109502	DIODE IN4742 12V 10%	1		D19
22		1211164-04	SW PACK 8 SPST SW	1		S1
23		1211164-06	SW PACK 10 SPST SW	1		S2
24		1209941-02	CONNECTOR 40 PIN	1		J1
25		1209941-03	LATCH, LEFT	1		
26		1209941-04	LATCH, RIGHT	1		
27		1302396	RES. 150K 5% 1/4W	1		R90
28		1302957	RES. 121 1% 1/2W RN55D-F	1		R1
29		1310881	RES. 1K 1% 1/2W FUSIBLE	18		R2, R25 THRU R32, R34 THRU R41, R54
30		1309143-04	POT 100 3/4W 76PR	1		R3
31		1300365	RES. 1K 5% 1/2W	14		R4, R12, R33, R42, R44, R51, R56, R65, R70, R84, R77, R78, R79, R82, R86
32		1303313	RES. 12.1K 1% 1/2W RN55D-F	1		R5
33		1302899	RES. 30.1 1% 1/2W RN55D-F	1		R6
34		1302955	RES. 750 1% 1/2W RN55D-F	1		R8
35		1300426	RES. 2.7K 5% 1/2W	3		R9, R14, R24
36		1302379	RES. 75 5% 1/2W	2		R10, R11
37		1301425	RES. 300 5% 1/2W	1		R43
38		1300479	RES. 10K 5% 1/2W	7		R13, R46, R48, R62, R20, R50, R4
39		1304841	RES. 75K 5% 1/2W	1		R53
40		1309143-13	POT 50K 3/4W 76PR	1		R15

E.C.O. NO. 1

THIS DRAWING AND SPECIFICATIONS, HEREIN, ARE THE PROPERTY OF DIGITAL EQUIPMENT CORPORATION AND SHALL NOT BE REPRODUCED OR COPIED OR USED IN WHOLE OR IN PART AS THE BASIS FOR THE MANUFACTURE OR SALE OF ITEMS WITHOUT WRITTEN PERMISSION. COPYRIGHT © 1976 DIGITAL EQUIPMENT CORPORATION

TITLE: A-D FOR 1103

ASSY NO.: D-UA-A012-0-0

SHEET 2 OF 6

SIZE: B PL

CODE: A012-0-0

NUMBER: D

DIGITAL EQUIPMENT CORPORATION

PARTS LIST

QUANTITY / VARIATION

NOTES:

MADE BY R.W. Counts  
 DATE 23 APR 76  
 ENG 110-8  
 DATE 6 JULY 76

CHECKED M. A. Smith  
 DATE 23 APR 76  
 DATE 6 JULY 76

SECTION  
 ISSUED SECTION

ITEM NO.	DRAWING NO.	PART NO.	DESCRIPTION	QUANTITY / VARIATION												REF. DESIGNATION
41		1305516	RES. 128K .1% 1/2W RN55E-B	1												R16
42		1300496	RES. 15K 5% 1/2W	1												R17
43		1300229	RES. 100 5% 1/2W	2												R18, R19
44		1302859	RES. 5.76K 1% 1/2W RN55D-F	1												R20
45		1302391	RES. 20K 5% 1/2W	1												R45, R46
46		1300488	RES. 12K 5% 1/2W	2												R47, R49
47		1300005-01	RES. PACK 1K	2												R52, R83
48		1300250	RES. 150 5% 1/2W	1												R55
49		1301781	RES. 82 5% 1/2W	1												R57
50		1300315	RES. 470 5% 1/2W	2												R58, R59
51		1309422	RES. 5.1 5% 1/2W	2												R60, R61
52		1310881-02	RES. 47 1% 1/2W FUSIBLE	2												R63, R68
53		1300271	RES. 220 5% 1/2W	1												R64
54		1302514	RES. 39K 5% 1/2W	1												R67
55		1300295	RES. 330 5% 1/2W	2												R71, R73
56		1301424	RES. 680 5% 1/2W	2												R72, R74
57		1309416	RES. 31.6K 1% 1/2W RN55D-F	1												R86
58		1300447	RES. 4.7K 5% 1/2W	1												R75
59		1302388	RES. 2K 5% 1/2W	1												R85
60		1509681	TRANS. 2N5245 FET	1												Q13
61		1509142	TRANS. 2N4250 PNP	4												Q2, Q3, Q7, Q8, Q10

E.C.O. NO.

THIS DRAWING AND SPECIFICATIONS HEREIN ARE THE PROPERTY OF DIGITAL EQUIPMENT CORPORATION AND SHALL NOT BE REPRODUCED OR COPIED OR USED IN WHOLE OR IN PART AS THE BASIS FOR THE MANUFACTURE OR SALE OF ITEMS WITHOUT WRITTEN PERMISSION. COPYRIGHT © 1976 DIGITAL EQUIPMENT CORPORATION

TITLE: A-D FOR 1103

ASSY NO.: D-UA-A012-0-0

SHEET 3 OF 6

REV. 0

SIZE CODE NUMBER: B PL A012-0-0

DIGITAL EQUIPMENT CORPORATION

PARTS LIST

QUANTITY / VARIATION

NOTES:

MADE BY R.W. Coomber  
 DATE 22 APR 76  
 ENG Mrs. Susan  
 DATE 6 JULY 76

CHECKED *M. M. ...*  
 DATE 22 APR 76  
 PROD R. Whitefield  
 DATE 6 JUL 76

SECTION  
 ISSUED SECTION

ITEM NO.	DRAWING NO.	PART NO.	DESCRIPTION	QUANTITY / VARIATION										REF. DESIGNATION		
62		1509587	TRANS. SE4020 NPN	5												Q4, Q5, Q6, Q7, Q12
63		1509525	TRANS. 2N3906 PNP	2												Q9, Q11
64		1503409	TRANS. DEC 6534-D PNP	1												Q14
65		1510414	TRANS. D45C6 PNP	1												Q15
66		1510171	TRANS. D44C3 NPN	1												Q16
67		1501881	TRANS. DEC 2219 NPN	2												Q17, Q18
68		1603377	INDUCTOR .22UH 10%	2												L1, L2
69		1909004	I.C. DEC 7402	3												E1, E2, E5
70		1909490	I.C. DEC 8281	1												E3
71		1910155	I.C. DEC 7408	1												E4
72		1905580	I.C. DEC 7450	1												E6
73		1912729	I.C. DEC DC004	1												E7
74		1909686	I.C. DEC 7404	5												E8, E12, E35, E38, E45
75		1910436	I.C. DEC 74123	2												E17, E21
76		1905547	I.C. DEC 7474	2												E10, E16
77		1905575	I.C. DEC 7400	1												E11
78		1912730	I.C. DEC DC003	1												E13
79		1911527	I.C. DEC 8097	2												E14, E28
80		1905590	I.C. DEC 7401	1												E15
81		1912951	I.C. DEC 8556	3												E18, E19, E20
82		1913040	I.C. DEC DC005	4												E22, E23, E25, E26

ECO. NO.

THIS DRAWING AND SPECIFICATIONS, HEREIN, ARE THE PROPERTY OF DIGITAL EQUIPMENT CORPORATION AND SHALL NOT BE REPRODUCED OR COPIED OR USED IN WHOLE OR IN PART AS THE BASIS FOR THE MANUFACTURE OR SALE OF ITEMS WITHOUT WRITTEN PERMISSION. COPYRIGHT © 1976 DIGITAL EQUIPMENT CORPORATION.

TITLE: A-D FOR 1103

ASSY NO.: D-UA-A012-0-0

SHEET 4 OF 6

SIZE: B CODE: PL NUMBER: A012-0-0 REV: D

DIGITAL EQUIPMENT CORPORATION

PARTS LIST

QUANTITY / VARIATION

NOTES:

MADE BY R.W. Counter  
 DATE 22 APR 76  
 ENG M.S. Swain  
 DATE 6 JUL 76

CHECKED M. D. O'Hara  
 DATE 22 APR 76  
 PROD R. W. Swain  
 DATE 6 JUL 76

SECTION  
 ISSUED SECTION

ITEM NO.	DRAWING NO.	PART NO.	DESCRIPTION	QUANTITY / VARIATION										REF. DESIGNATION	
83		1911330	I.C. DEC 74173	6											E24, E27, E30, E31, E33, E34
84		23144A1	I.C. (PS) DEC 6331 8 X 32 ROM	1											E42
85		1910652	I.C. DEC 74174	1											E32
86		1912107	I.C. DEC LM324	1											E37
87		1911628	I.C. DEC AM2504	1											E39
88		1913219	I.C. DEC AD2700/L	1											E40
89		1910741	I.C. DEC 7406	1											E41
90		23162A1	I.C. (MUX) DEC 5610 8 X 32 ROM	1											E29
91		1911629	I.C. DEC MC1408-L8	1											E43
92		2111285-02	I.C. DEC HI200-5	1											E44
93		1912401	I.C. DEC AD562	1											E46
94		1911598	I.C. DEC DG501C	2											E47, E48
95		1910235-1	I.C. DEC LM310N	1											E49
96		1913218	I.C. DEC LM325N	1											E50
97		7413826	HANDLE, LEFT	1											
98		7413826-1	HANDLE, RIGHT	1											
99		9006735	SPLIT LUGS	18											TP1 THRU TP14
100		9007112	TAB, FASTON	2											
101		9009000	EYELET	2											
102		9006732	EYELET	8											
103		1911144	I.C. DEC 2505	1											E51

ECO. NO.

THIS DRAWING AND SPECIFICATIONS, HEREIN, ARE THE PROPERTY OF DIGITAL EQUIPMENT CORPORATION AND SHALL NOT BE REPRODUCED OR COPIED OR USED IN WHOLE OR IN PART AS THE BASIS FOR THE MANUFACTURE OR SALE OF ITEMS WITHOUT WRITTEN PERMISSION. COPYRIGHT © 1976 DIGITAL EQUIPMENT CORPORATION

TITLE: A-D FOR 1103

ASSY NO.: D-UA-A012-0-0

SHEET 5 OF 6

SIZE: B CODE: PL NUMBER: A012-0-0 REV: D

DIGITAL EQUIPMENT CORPORATION

PARTS LIST

QUANTITY / VARIATION

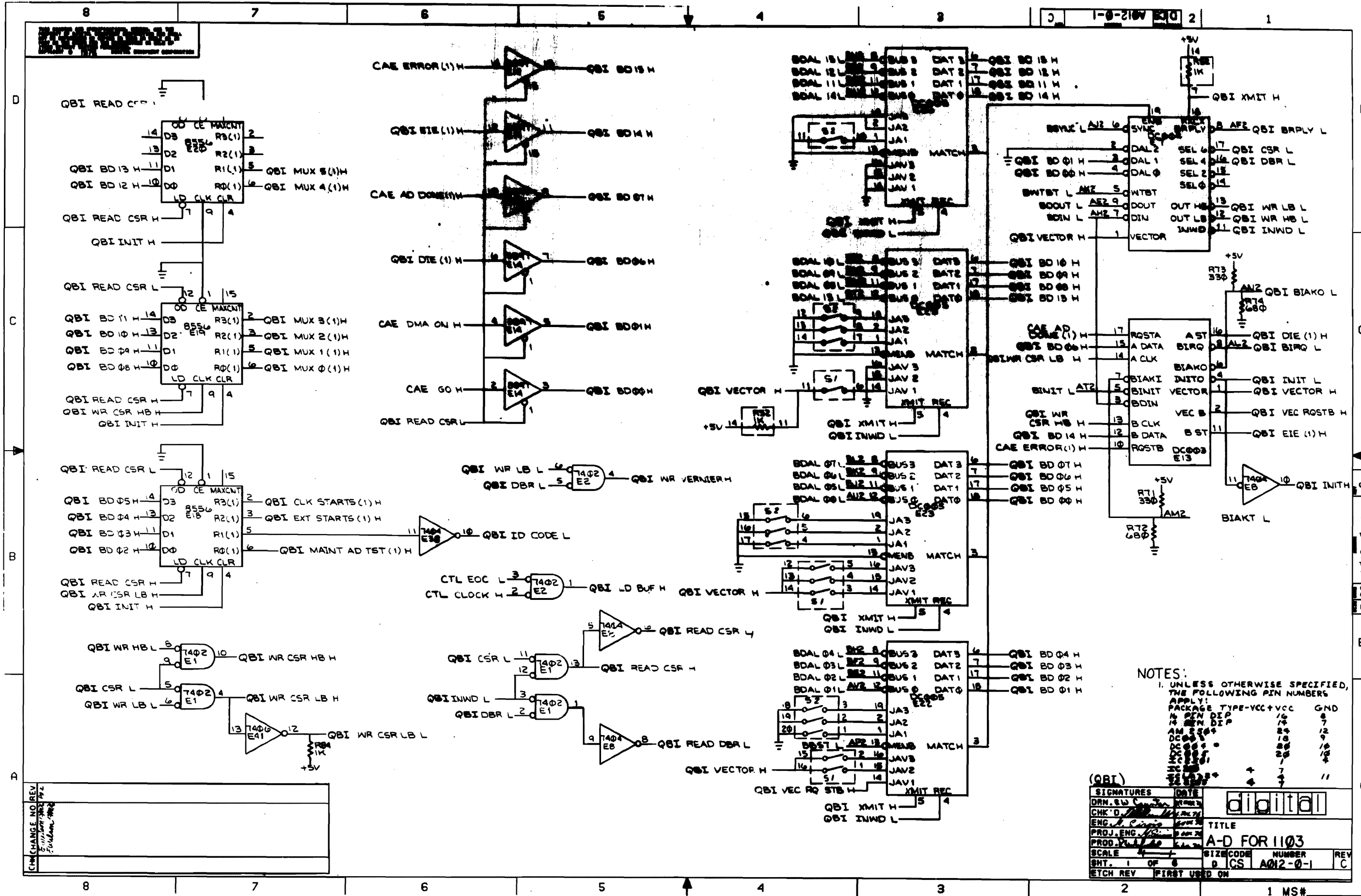
NOTES:

MADE BY R. W. Coover	CHECKED <i>Alkhan</i>	SECTION
DATE 22 APR 76	DATE 6 JULY 76	
ENG <i>Ms. Girvin</i>	PROD <i>R. W. Coover</i>	ISSUED SECTION
DATE 6 JULY 76	DATE 6 JUL 76	

ITEM NO.	DRAWING NO.	PART NO.	DESCRIPTION	QUANTITY / VARIATION										REF DESIGNATION		
104		1305114	RES 3.48K 1% 1/4W RN55D-F	1												R88
105		1912858	IC DEC 74LS221	1												E9
106		1103041	DIODE DEC 777	3												D11, D12, D36.
107		1001610-01	CAP. .01 UF 100V	1												C64
108		1304870	RES. 6.81K 1% 1/4W RN55D-F	2												R80, R81
109		1000042	CAP. 1000 PF. 100V 5%	1												C55
110		9009185	JUMPER WHT INSULATION	4												W1, W2, W4, W5

E.C.O. NO.

THIS DRAWING AND SPECIFICATIONS, HEREIN, ARE THE PROPERTY OF DIGITAL EQUIPMENT CORPORATION AND SHALL NOT BE REPRODUCED OR COPIED OR USED IN WHOLE OR IN PART AS THE BASIS FOR THE MANUFACTURE OR SALE OF ITEMS WITHOUT WRITTEN PERMISSION. COPYRIGHT © DIGITAL EQUIPMENT CORPORATION	TITLE	ASSY NO.	SIZE	CODE	NUMBER	REV.
	A - D FOR 1103	D-UA-A012-0-0	B	PL	A012-0-0	D



NOTES:  
 1. UNLESS OTHERWISE SPECIFIED,  
 THE FOLLOWING PIN NUMBERS  
 APPLY:  
 PACKAGE TYPE-VCC+VCC GND  
 14 PIN DIP 14 8 7  
 16 PIN DIP 14 9 12  
 16 PIN DIP 14 10 12  
 16 PIN DIP 14 11 12  
 16 PIN DIP 14 12 12  
 16 PIN DIP 14 13 12  
 16 PIN DIP 14 14 12  
 16 PIN DIP 14 15 12  
 16 PIN DIP 14 16 12  
 16 PIN DIP 14 17 12  
 16 PIN DIP 14 18 12  
 16 PIN DIP 14 19 12  
 16 PIN DIP 14 20 12  
 16 PIN DIP 14 21 12  
 16 PIN DIP 14 22 12  
 16 PIN DIP 14 23 12  
 16 PIN DIP 14 24 12  
 16 PIN DIP 14 25 12  
 16 PIN DIP 14 26 12  
 16 PIN DIP 14 27 12  
 16 PIN DIP 14 28 12  
 16 PIN DIP 14 29 12  
 16 PIN DIP 14 30 12

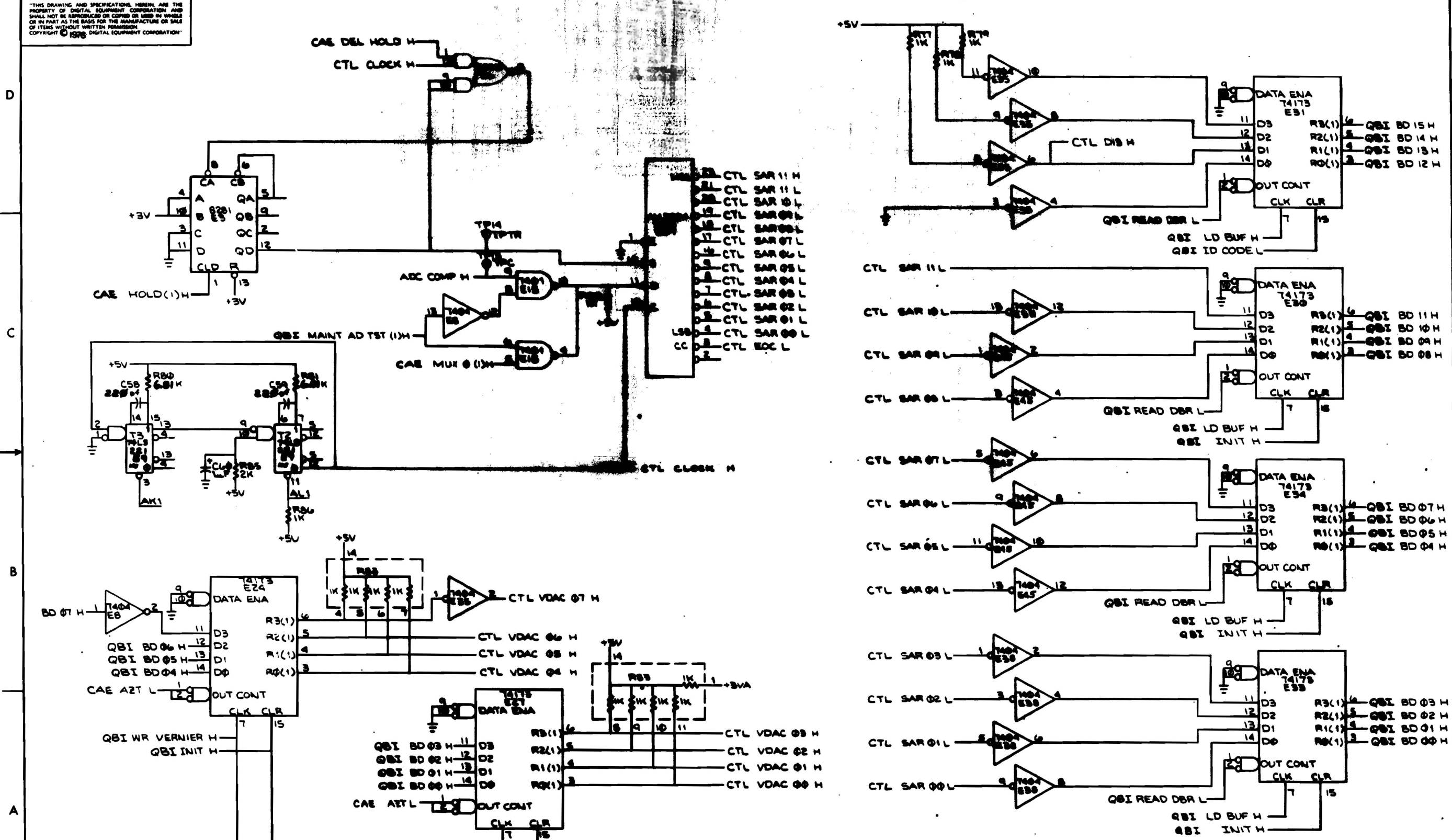
SIGNATURES		DATE	digital
DRN. S.W.			
CHK. D.			
ENG. S.W.			
PROJ. ENG.			TITLE
PROD. P.L.			A-D FOR 1103
SCALE			SIZE CODE NUMBER REV
SHT. 1 OF 6			D CS A012-0-1 C
ETCH REV			FIRST USED ON

CHANGE NO	REV	DATE	BY

D CS A012-0-1

1 MS#

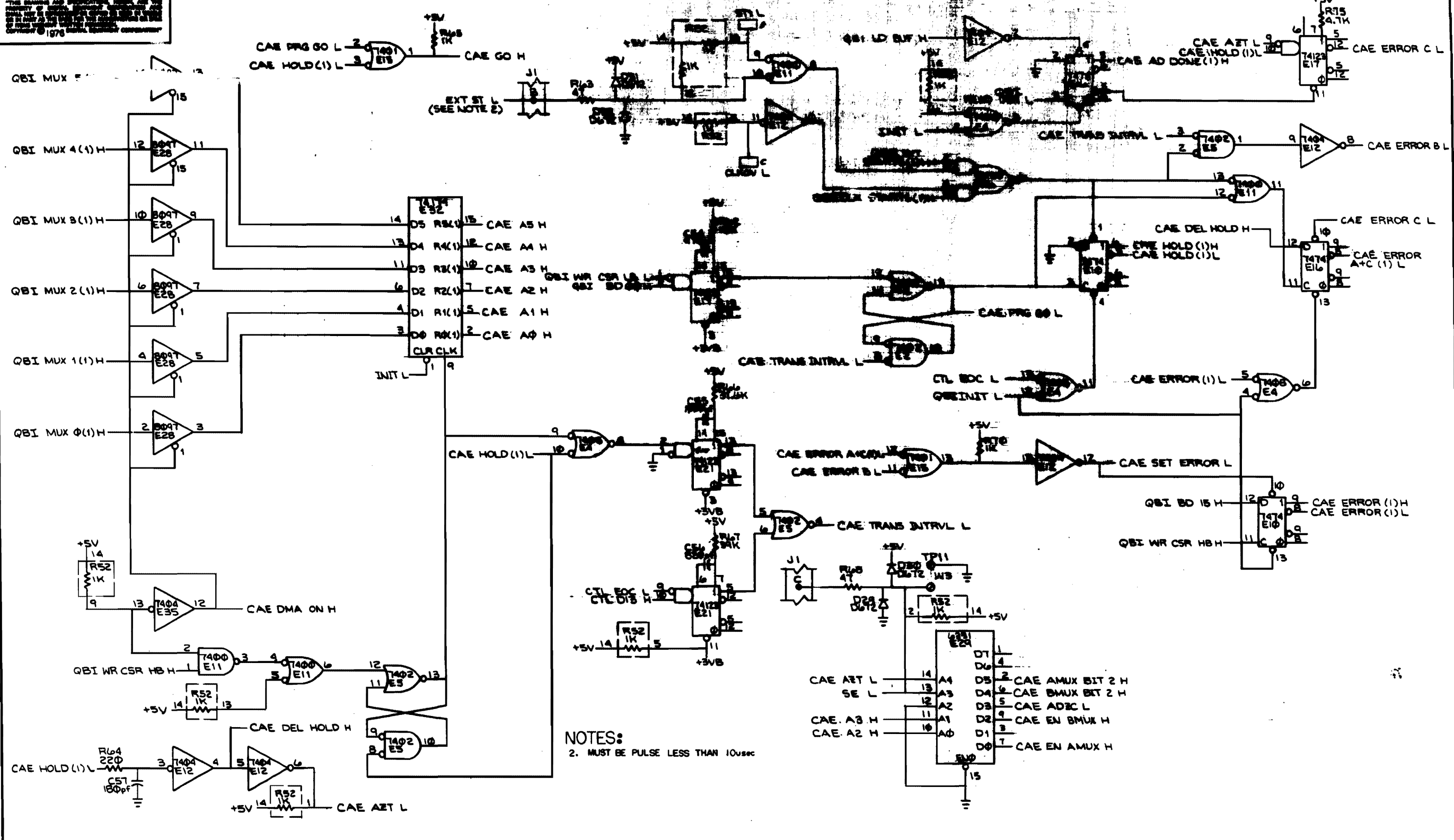
THIS DRAWING AND SPECIFICATIONS HEREIN ARE THE PROPERTY OF DIGITAL EQUIPMENT CORPORATION AND SHALL NOT BE REPRODUCED OR COPIED OR USED IN WHOLE OR IN PART AS THE BASIS FOR THE MANUFACTURE OR SALE OF ITEMS WITHOUT WRITTEN PERMISSION. COPYRIGHT © 1978 DIGITAL EQUIPMENT CORPORATION.



REVISIONS		
CHK	CHANGE NO	REV

DCS A012-0-1

THE DRAWING AND OPERATING INSTRUCTIONS ARE THE PROPERTY OF DCS AND ARE NOT TO BE REPRODUCED OR TRANSMITTED IN ANY FORM OR BY ANY MEANS, ELECTRONIC OR MECHANICAL, INCLUDING PHOTOCOPYING, RECORDING, OR BY ANY INFORMATION STORAGE AND RETRIEVAL SYSTEM. © 1978 DCS ELECTRONIC CORPORATION



NOTES:  
2. MUST BE PULSE LESS THAN 10usec

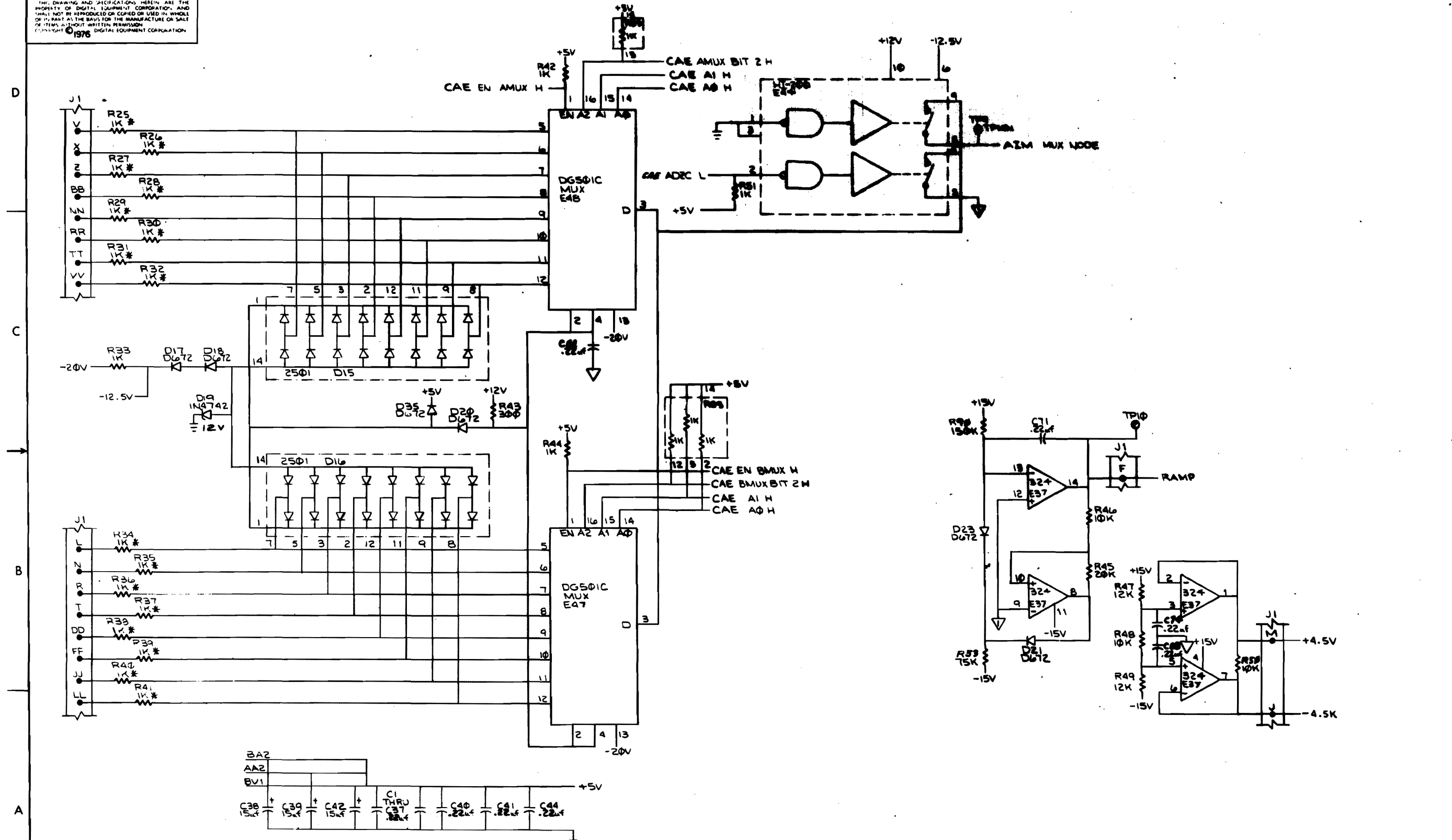
CAE A0 L    D7  
CAE A1 H    D6  
CAE A2 H    D5  
CAE A3 H    D4  
SE L        D3  
CAE A4 L    D2  
CAE A5 H    D1  
CAE A6 H    D0

REVISIONS		
CHK	CHANGE NO.	REV.

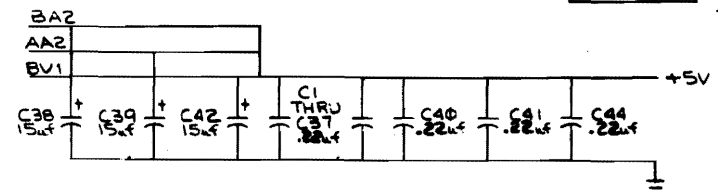
TITLE A-D FOR 1103		SIZE CODE DCS	NUMBER A012-0-1	REV. C
SCALE		SHEET 3 OF 6	DST.	

REV. C  
NUMBER  
DCS A012-0-1

THIS DRAWING AND SPECIFICATIONS HEREIN ARE THE PROPERTY OF DIGITAL EQUIPMENT CORPORATION, AND SHALL NOT BE REPRODUCED OR COPIED OR USED IN WHOLE OR IN PART AS THE BASIS FOR THE MANUFACTURE OR SALE OF ITEMS WITHOUT WRITTEN PERMISSION. COPYRIGHT © 1976 DIGITAL EQUIPMENT CORPORATION.

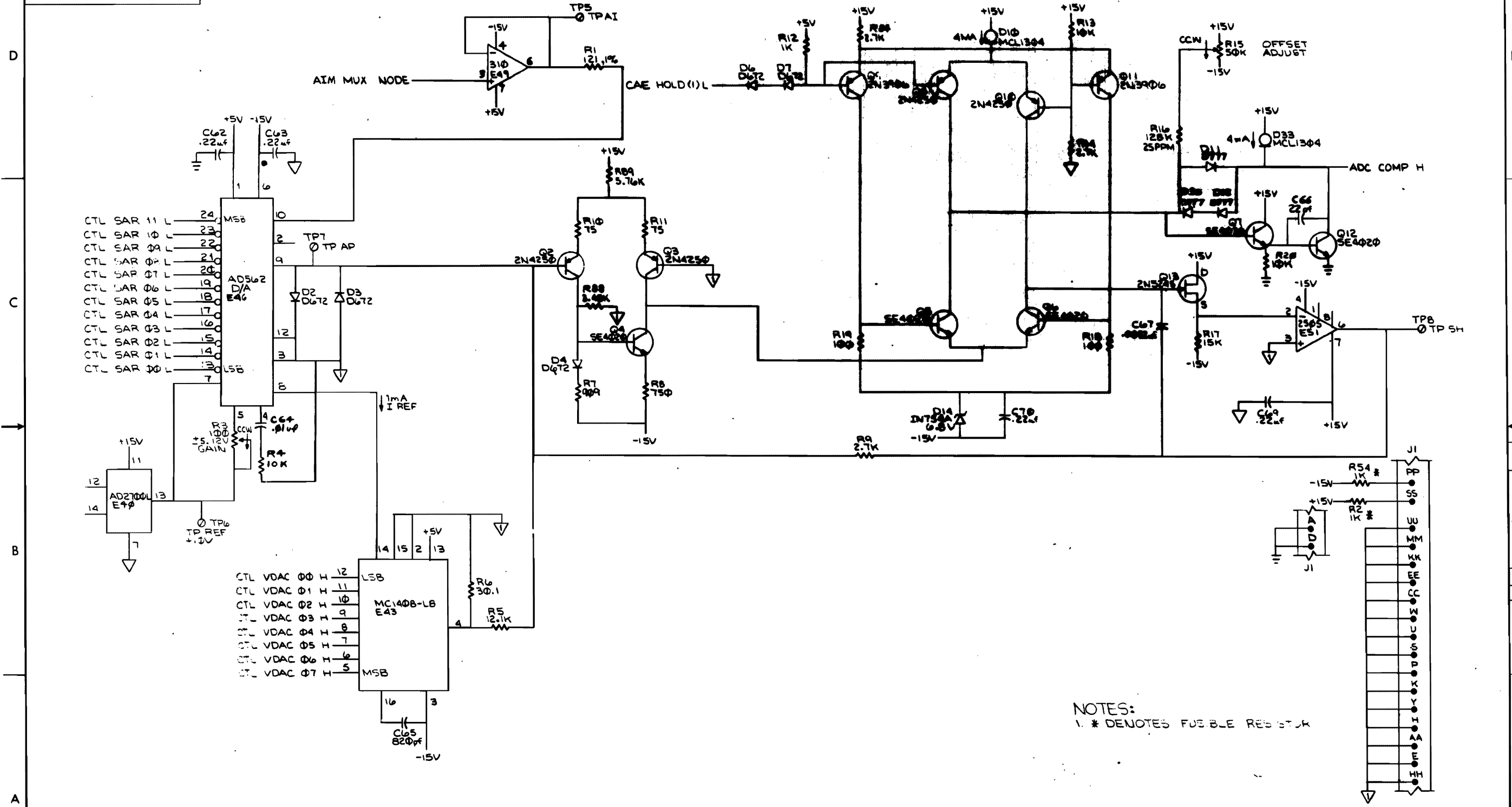


REV.	CHANGE NO.	KEY



DCS A012-0-1

THIS DRAWING AND SPECIFICATIONS HEREIN ARE THE PROPERTY OF DIGITAL EQUIPMENT CORPORATION AND SHALL NOT BE REPRODUCED OR COPIED OR USED IN WHOLE OR IN PART AS THE BASIS FOR THE MANUFACTURE OR SALE OF ANY ITEM WITHOUT THE WRITTEN PERMISSION OF DIGITAL EQUIPMENT CORPORATION  
© 1976

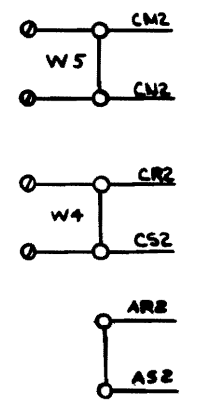
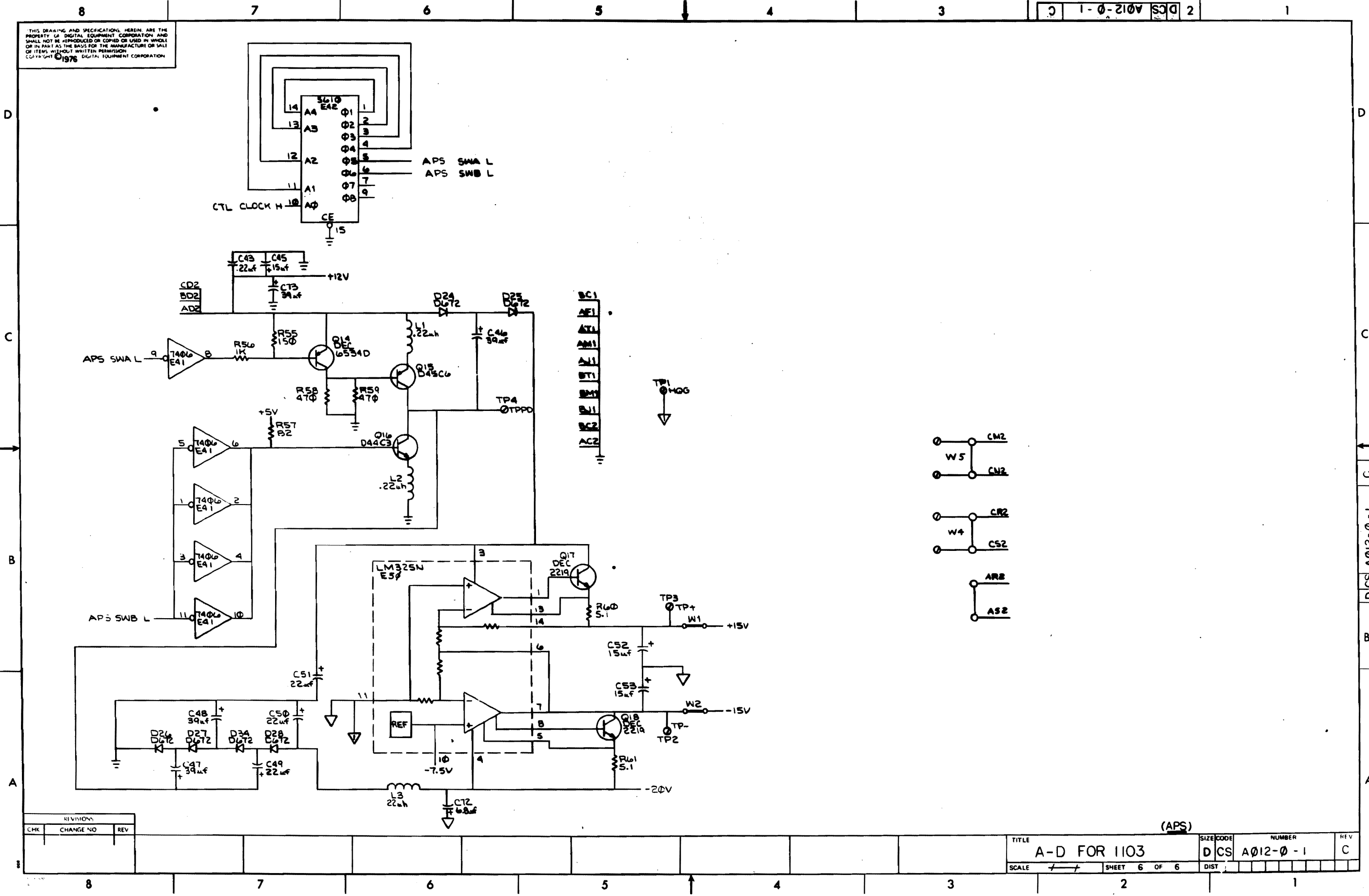


NOTES:  
1. \* DENOTES FUSIBLE RESISTOR

(ADC)

TITLE	A-D FOR 1103	SIZE CODE	D CS	NUMBER	A012-0-1	REV.	C
SCALE	1/1	SHEET	5	OF	6	DIST.	

THIS DRAWING AND SPECIFICATIONS HEREIN ARE THE PROPERTY OF DIGITAL EQUIPMENT CORPORATION AND SHALL NOT BE REPRODUCED OR COPIED OR USED IN WHOLE OR IN PART AS THE BASIS FOR THE MANUFACTURE OR SALE OF ITEMS WITHOUT WRITTEN PERMISSION.  
 COPYRIGHT © 1976 DIGITAL EQUIPMENT CORPORATION



REVISIONS		
CHK	CHANGE NO	REV

TITLE		SIZE CODE		NUMBER		REV
A-D FOR 1103		DCS		A012-0-1		C
SCALE		SHEET		OF		
		6		OF		6

