

CUSTOMER PRINT SET		ELECTRICAL					CUSTOMER PRINT SET						
DRINK	NO.	DRINK	NO.	DRINK	NO.	DESCRIPTION	OPTION NO./FILE DATE	DRINK	NO.	DRINK	NO.	DESCRIPTION	OPTION NO./FILE DATE
MFG. SET	FIND NO.	DRAWING NO.	REV	NO OF SHT				MFG. SET	FIND NO.	DRAWING NO.	REV	NO OF SHT	
	1	B-DD-DR11K-g	#	2		DRAWING DIRECTORY							
		C-UA-BC03R-g-g	#	1		I/O CABLE							
		A-PL-DR11K-g-g	#	1		SHIPPING LIST							
		A-SP-DR11K-g-1	#	32		DRILL-K SPECIFICATION							
		A-SP-DR11K-g-2	#	5		DRILL-K CHECKCUT AND ACCEPTANCE PROCEDURE							
	2	D-CS-M7843-g-1	#	3		DRILL-K DIGITAL I/O							
		K-CO-M7843-g-4	#	1		X-Y COORDINATE HOLE LOCATION							
		D-AB-M7843-g-5	#	1		ASSY/DRILLING HOLE LAYOUT							
		B-MH-M7843-g-6	#	1		MODULE ECO HISTORY							
	3	C-IA-5408776-0-0	#	1		PRIORITY LEVEL JUMPER #4							
		B-CS-5408776-0-1	#	1		PRIORITY LEVEL JUMPER #4							
		K-CO-5408776-0-4	#	1		X-Y COORDINATE HOLE LOCATION							
		B-MH-5408776-0-5	#	1		MODULE ECO HISTORY							
	4	C-AB-5408776-0-5	#	1		ASSY/DRILLING HOLE LAYOUT							

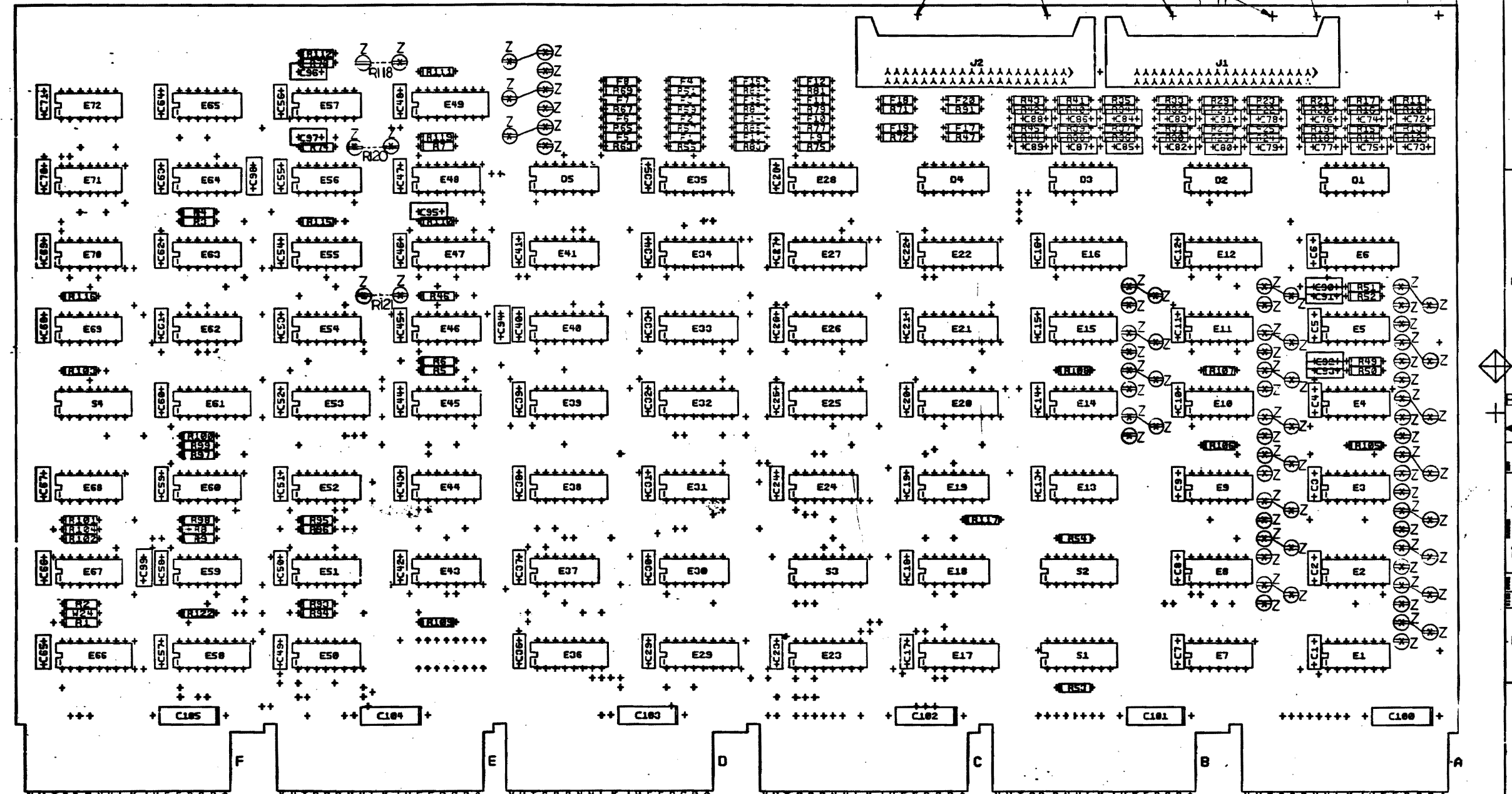
CUSTOMER PRINT SET CODES
 X = PRINT OF DOCUMENT INCLUDED IN PRINT SET
 C = INCLUDES ALL PRINTS INDICATED ON DOCUMENT
 S = CONFIDENTIAL AUTHORIZED SIGNATURE REQUIRED

TITLE DR11K DIGITAL I/O
 SHEET 2 OF 2
 SIZE CODE 8 DD
 NUMBER DR11K 7
 REV A

8 7 6 5 4 3 2 1 MK

THIS DRAWING IS UNCLASSIFIED, UNLESS AND UNLESS THE PROPERTY OF THE U.S. GOVERNMENT OR ANY OTHER ENTITY IS IDENTIFIED BY A REFERENCE TO SUCH PROPERTY IN THIS DRAWING. IT IS TO BE RELEASED TO THE PUBLIC ON REQUEST.

DO NOT PUT EYELETS IN THESE FOUR HOLES
 4 (QTY 12)
 43



NOTES:

CHK	CHANGE NO	REV
1	1	1
2	2	2
3	3	3
4	4	4
5	5	5
6	6	6
7	7	7
8	8	8

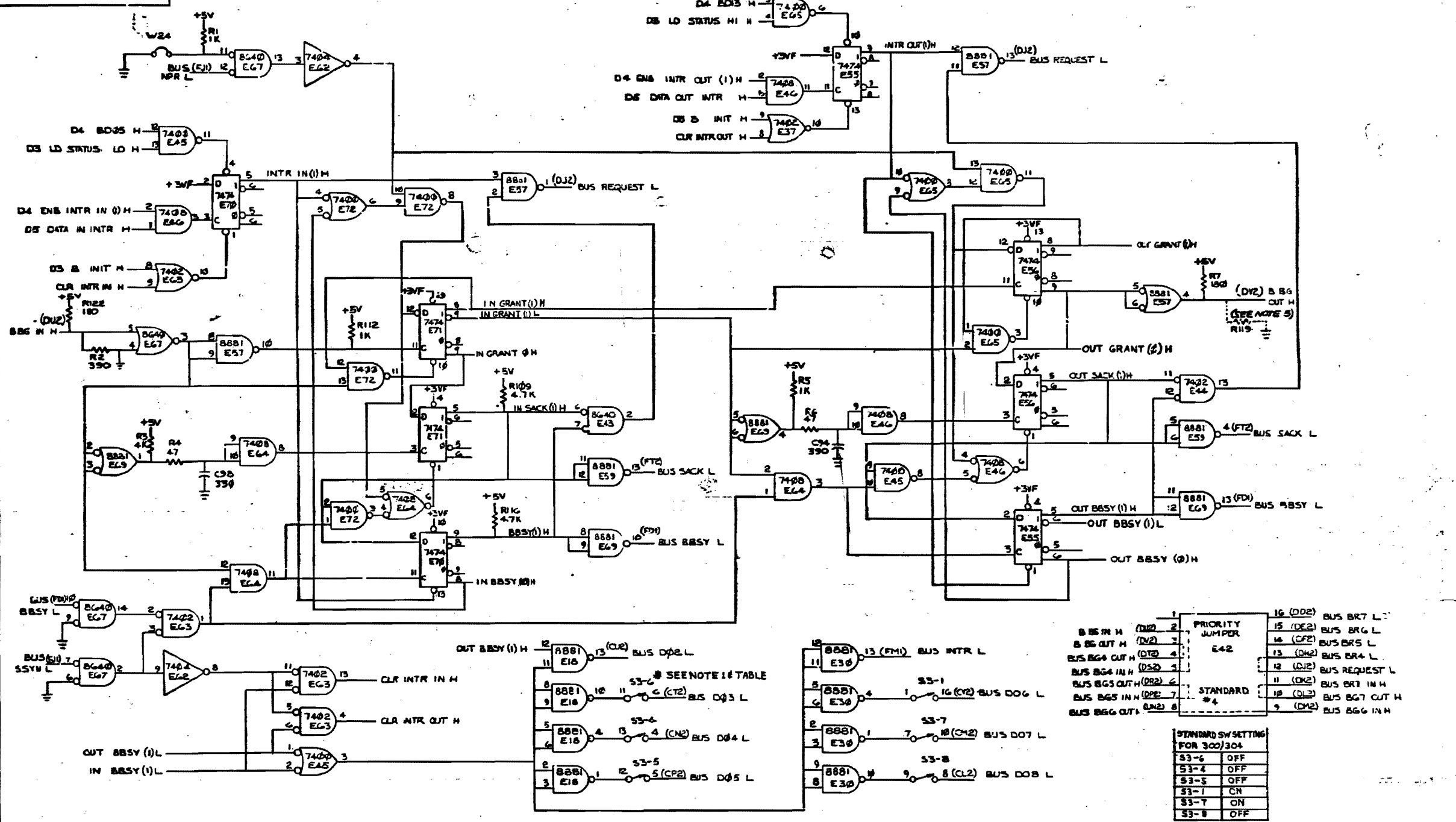
ETCH REV.	C
P.C. DESIGN DATA BASE REV.	C

SIGNATURES	DATE	digital
DRN. SLPINAKI	01/07/73	
CHK'D. J. FERGUSON	01/07/73	
ENG. R. KNAIAN	02/27/73	
PROJ. ENG. R. KNAIAN	02/27/73	
PROD. J. HESS	02/27/73	
SCALE 3/1		
SHT. 1 OF 3		
NEXT HIGHER ASSY.		

TITLE DRII-K DIGITAL I/O

8 7 6 5 4 3 2 1 MS#

THE DRAWING AND SPECIFICATIONS HEREIN ARE THE PROPERTY OF DIGITAL EQUIPMENT CORPORATION AND SHALL NOT BE REPRODUCED OR COPIED OR USED IN WHOLE OR IN PART AS THE BASIS FOR THE MANUFACTURE OR SALE OF THIS WITHOUT WRITTEN PERMISSION. COPYRIGHT © 1974 DIGITAL EQUIPMENT CORPORATION



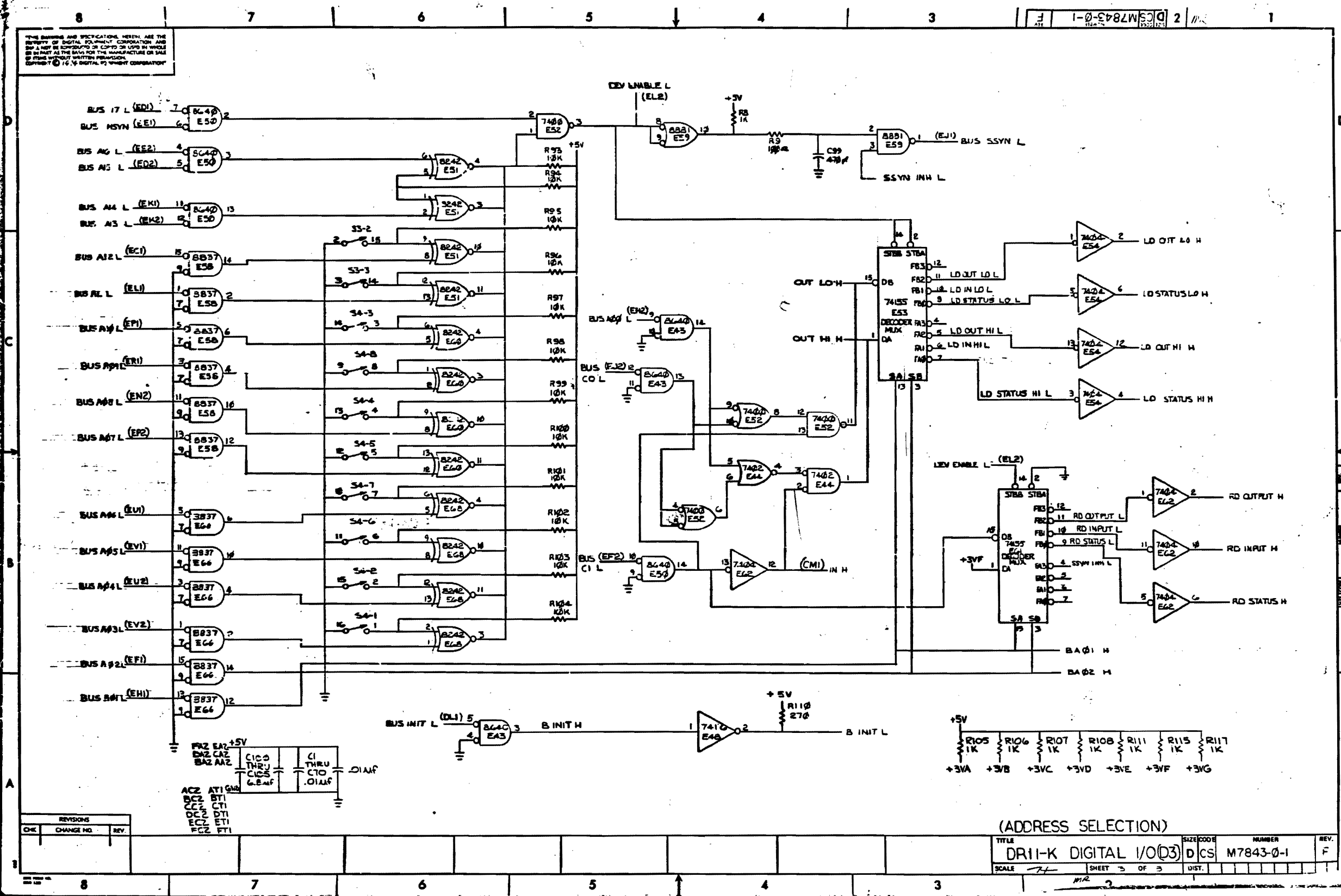
1	16 (D02)	BUS BR7 L
2	15 (D02)	BUS BR6 L
3	14 (CP2)	BUS BR5 L
4	13 (D02)	BUS BR4 L
5	12 (D02)	BUS REQUEST L
6	11 (D02)	BUS BR7 IN H
7	10 (D02)	BUS BR7 OUT H
8	9 (D02)	BUS BR6 IN H

STANDARD SW SETTING FOR 300/304	
S3-6	OFF
S3-4	OFF
S3-5	OFF
S3-1	ON
S3-7	ON
S3-8	OFF

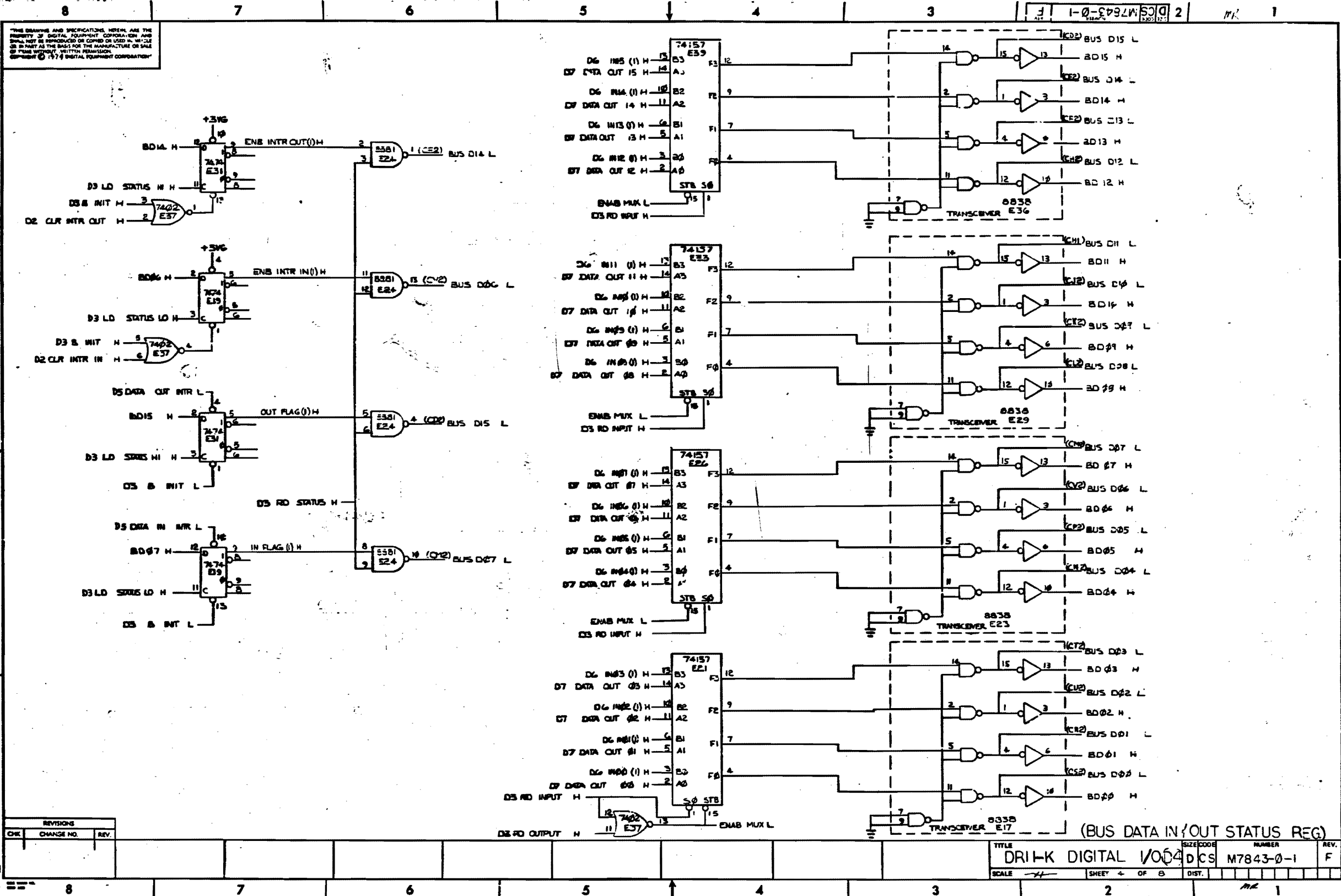
(UNIBUS CONTROL)

REVISIONS		
CHK	CHANGE NO.	REV.
	1	E

THE DRAWING AND SPECIFICATIONS HEREIN ARE THE PROPERTY OF DIGITAL EQUIPMENT CORPORATION AND MAY NOT BE REPRODUCED OR COPIED IN WHOLE OR IN PART AS THE BASIS FOR THE MANUFACTURE OR SALE OF OTHER PRODUCTS WITHOUT WRITTEN PERMISSION. COPYRIGHT © 1974 BY DIGITAL EQUIPMENT CORPORATION



THE DRAWING AND SPECIFICATIONS HEREIN ARE THE PROPERTY OF DIGITAL EQUIPMENT CORPORATION AND SHALL NOT BE REPRODUCED OR COPIED IN WHOLE OR IN PART AS THE BASIS FOR THE MANUFACTURE OR SALE OF PAPER WITHOUT THE WRITTEN PERMISSION OF DIGITAL EQUIPMENT CORPORATION © 1974 DIGITAL EQUIPMENT CORPORATION

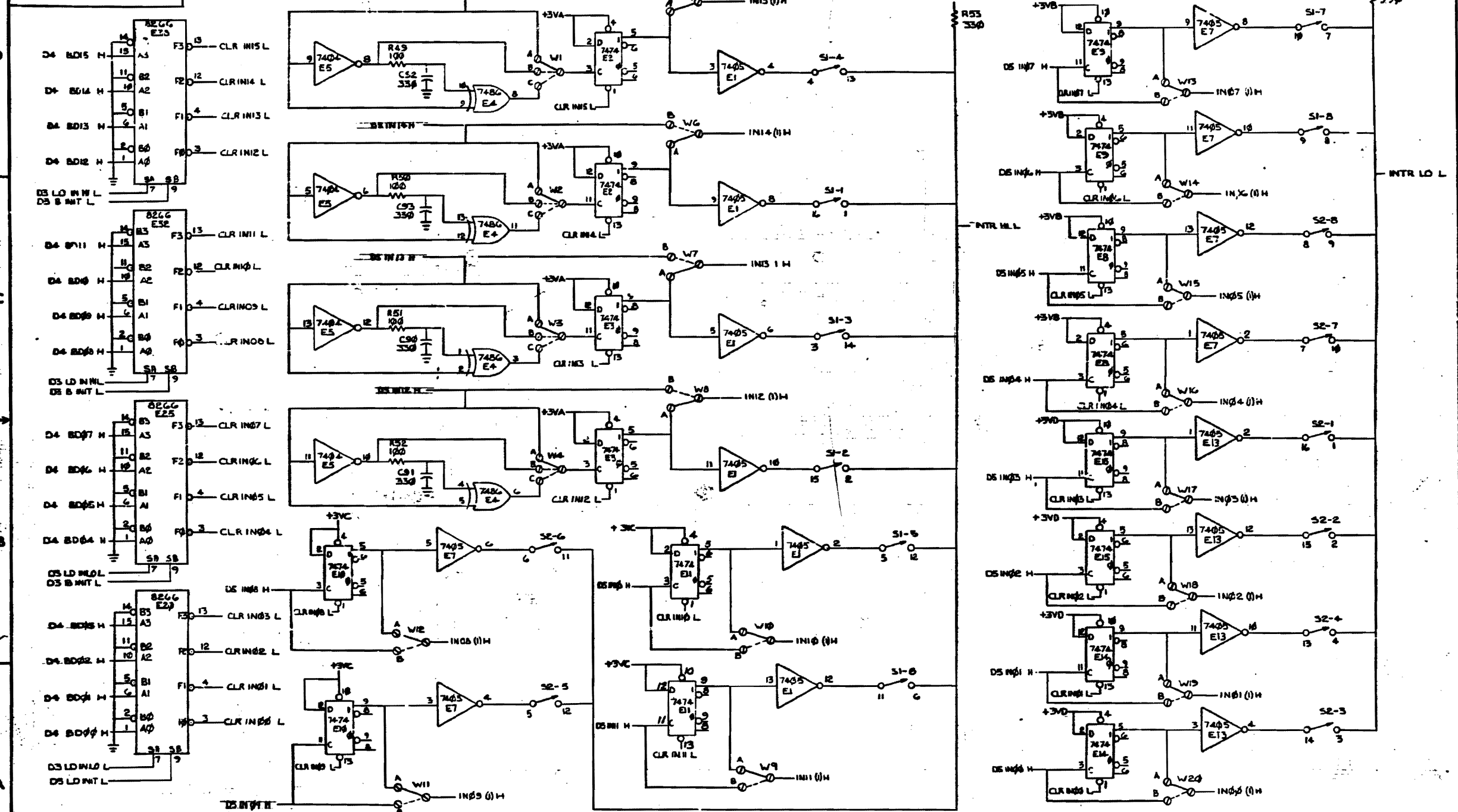


REV.	CHANGE NO.	REV.

TITLE	DRINK DIGITAL	SIZE CODE	NO. OF SHEETS	REV.

DCS M7843-0-1 F

THESE DRAWINGS AND SPECIFICATIONS HEREAFTER ARE THE PROPERTY OF DIGITAL EQUIPMENT CORPORATION AND SHALL NOT BE REPRODUCED OR COPIED OR USED IN WHOLE OR IN PART AS THE BASIS FOR THE MANUFACTURE OR SALE OF ITEMS WITHOUT WRITTEN PERMISSION.
 © 1974 DIGITAL EQUIPMENT CORPORATION

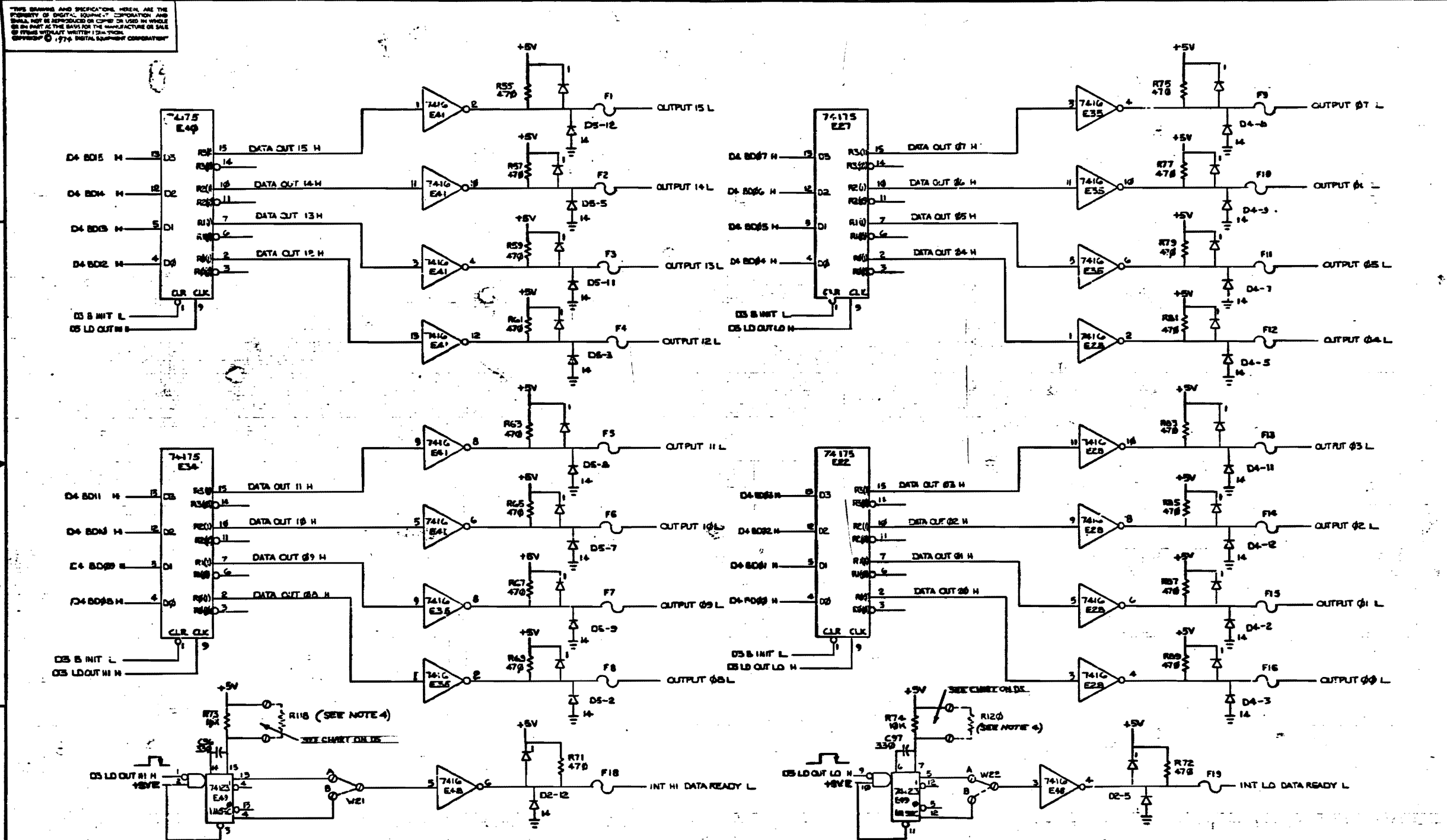


REVISIONS		
CHK	CHG/NO.	REV.

TITLE		SIZE CODE	NUMBER	REV.
DRI-HK DIGITAL I/O (DS)		D CS	M7843-0-1	F
SCALE	SHEET	OF	DIST.	

THIS DRAWING AND SPECIFICATIONS HEREIN ARE THE PROPERTY OF DIGITAL EQUIPMENT CORPORATION AND SHALL NOT BE REPRODUCED OR COPIED OR USED IN WHOLE OR IN PART AS THE BASIS FOR THE MANUFACTURE OR SALE OF OTHER EQUIPMENT WITHOUT WRITTEN INSTRUCTIONS FROM DIGITAL EQUIPMENT CORPORATION.

DCS M7843-0-1 2



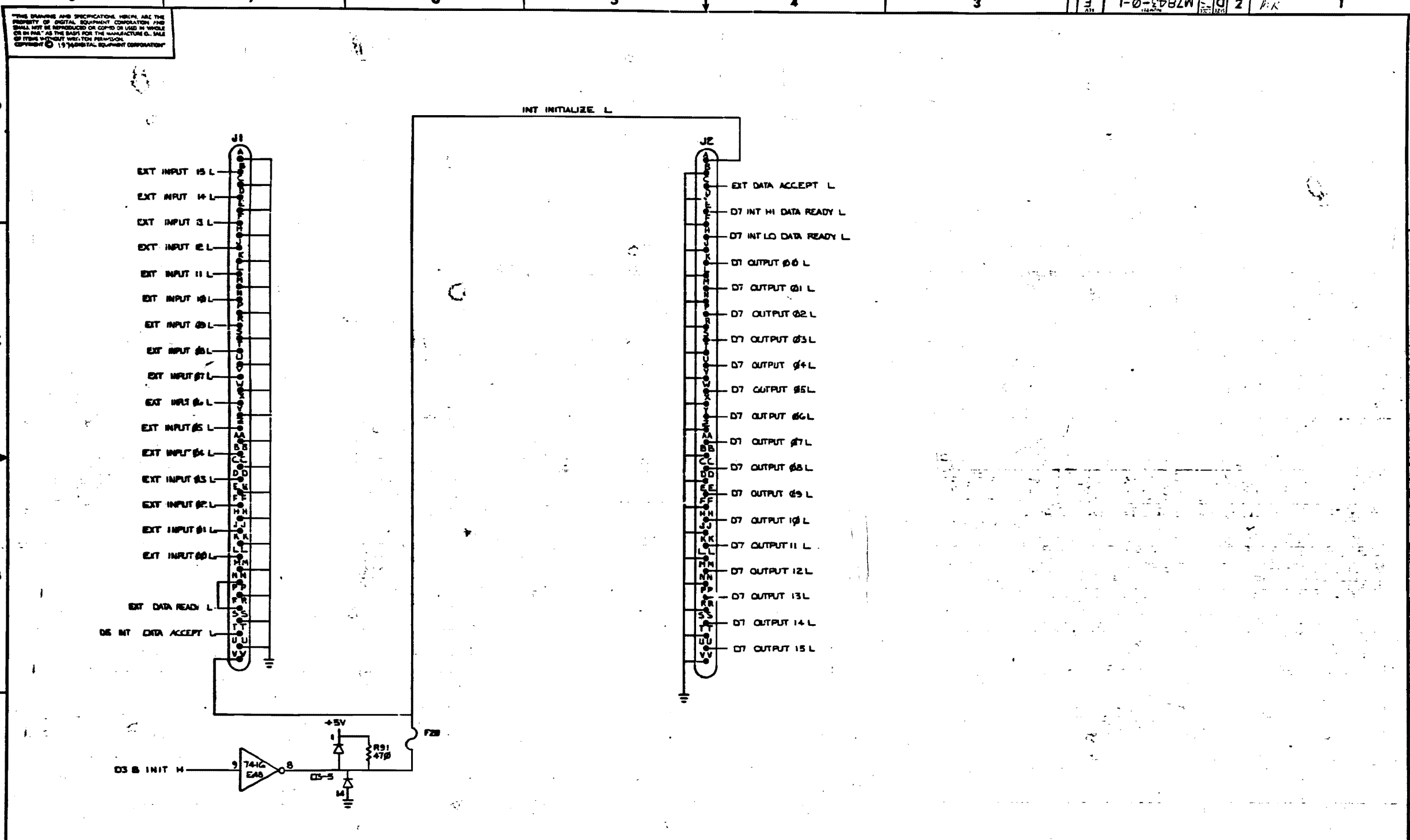
REVISIONS		
CHK	CHANGE NO.	REV

(OUTPUT REG)		TITLE	SIZE CODE	NUMBER	REV.
		DR11-K DIGITAL I/O (D7)	DCS	M7843-0-1	-F
SCALE	SHEET 7 OF 9	DIST.			

DCS M7843-0-1

THE DRAWING AND SPECIFICATIONS HEREIN ARE THE PROPERTY OF DIGITAL EQUIPMENT CORPORATION AND SHALL NOT BE REPRODUCED OR COPIED OR USED IN WHOLE OR IN PART AS THE BASIS FOR THE MANUFACTURE OR SALE OF ITEMS WITHOUT WRITTEN PERMISSION. COPYRIGHT © 1974 DIGITAL EQUIPMENT CORPORATION

1-0-8282M 2 F.K



REVISIONS		
CHK	CHANGE NO.	REV.

(BERG PIN ASSIGN)

TITLE	SIZE CODE	NUMBER	REV.
DRI-K DIGITAL I/O (D8)	D CS	M7843-0-1	F
SCALE	SHEET 6 OF 6	DIST.	ME1

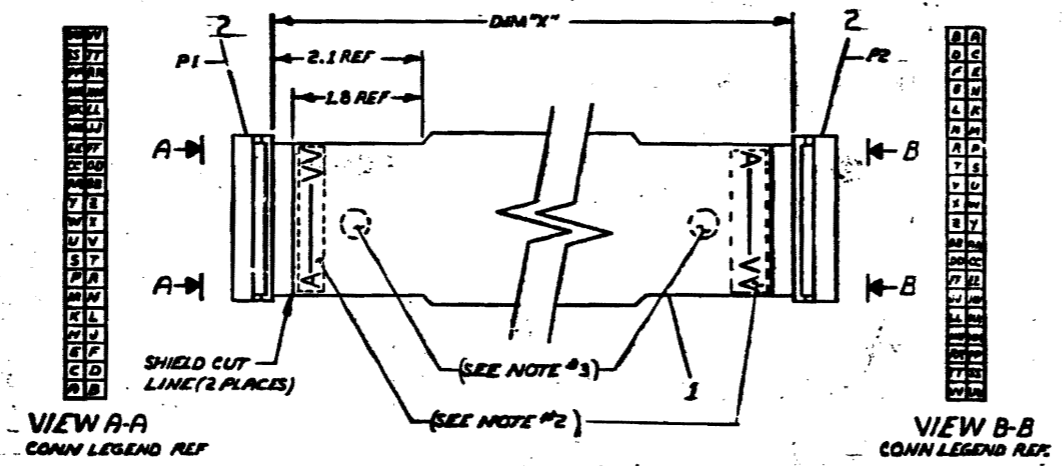
D CS M7843-0-1 F

THE DRAWING AND SPEC. ON THIS ARE THE PROPERTY OF DIGITAL CORPORATION AND SHALL NOT BE REPRODUCED OR IN ANY MANNER OR IN PART AS THE BASIS FOR THE MANUFACTURE OR SALE OF OTHER EQUIPMENT WITHOUT PERMISSION OF DIGITAL EQUIPMENT CORPORATION.

WIRE TABLE			
FROM	TO	FROM	TO
P1-A	P2-VV	P1-Y	P2-Y
P1-B	P2-UU	P1-Z	P2-W
P1-C	P2-TT	P1-AA	P2-V
P1-D	P2-SS	P1-BB	P2-U
P1-E	P2-RR	P1-CC	P2-T
P1-F	P2-PP	P1-DD	P2-S
P1-H	P2-NN	P1-EE	P2-R
P1-J	P2-MM	P1-FF	P2-P
P1-K	P2-LL	P1-HH	P2-N
P1-L	P2-KK	P1-JJ	P2-M
P1-M	P2-UU	P1-KK	P2-L
P1-N	P2-WW	P1-LL	P2-K
P1-P	P2-FF	P1-MM	P2-J
P1-R	P2-EE	P1-NN	P2-H
P1-S	P2-DD	P1-PP	P2-F
P1-T	P2-CC	P1-RR	P2-E
P1-U	P2-BB	P1-SS	P2-D
P1-V	P2-AA	P1-TT	P2-C
P1-W	P2-ZZ	P1-UU	P2-B
P1-X	P2-Y	P1-VV	P2-A

LEGEND		
NUMBER	DIM "X"	PRECUT LENGTH
BC08R-01	1.00 FT	1.00 FT 1.5 IN: 1.00 IN
BC08R-02	2.00 FT	2.00 FT 1.5 IN: 1.00 IN
BC08R-03	3.00 FT	3.00 FT 1.5 IN: 1.00 IN
BC08R-04	4.00 FT	4.00 FT 1.5 IN: 1.00 IN
BC08R-05	5.00 FT	5.00 FT 1.5 IN: 1.00 IN
BC08R-06	6.00 FT	6.00 FT 1.5 IN: 2.00 IN
BC08R-07	7.00 FT	7.00 FT 1.5 IN: 2.00 IN
BC08R-08	8.00 FT	8.00 FT 1.5 IN: 2.00 IN
BC08R-09	9.00 FT	9.00 FT 1.5 IN: 2.00 IN
BC08R-10	10.00 FT	10.00 FT 1.5 IN: 2.00 IN
BC08R-11	11.00 FT	11.00 FT 1.5 IN: 3.00 IN
BC08R-12	12.00 FT	12.00 FT 1.5 IN: 3.00 IN
BC08R-13	13.00 FT	13.00 FT 1.5 IN: 3.00 IN
BC08R-14	14.00 FT	14.00 FT 1.5 IN: 3.00 IN
BC08R-15	15.00 FT	15.00 FT 1.5 IN: 3.00 IN
BC08R-16	16.00 FT	16.00 FT 1.5 IN: 3.00 IN
BC08R-17	17.00 FT	17.00 FT 1.5 IN: 3.00 IN
BC08R-18	18.00 FT	18.00 FT 1.5 IN: 3.00 IN
BC08R-19	19.00 FT	19.00 FT 1.5 IN: 3.00 IN
BC08R-20	20.00 FT	20.00 FT 1.5 IN: 3.00 IN
BC08R-25	25.00 FT	25.00 FT 1.5 IN: 3.00 IN
BC08R-30	30.00 FT	30.00 FT 1.5 IN: 3.00 FT
BC08R-35	35.00 FT	35.00 FT 1.5 IN: 3.00 FT
BC08R-50	50.00 FT	50.00 FT 1.5 IN: 1.00 FT
BC08R-60	60.00 FT	60.00 FT 1.5 IN: 1.00 FT
BC08R-75	75.00 FT	75.00 FT 1.5 IN: 1.00 FT
BC08R-100	100.00 FT	100.00 FT 1.5 IN: 2.00 FT
BC08R-130	130.00 FT	130.00 FT 1.5 IN: 2.00 FT
BC08R-160	160.00 FT	160.00 FT 1.5 IN: 2.00 FT

1. ASSEMBLE THIS CABLE PER PROCESS SPEC #7606485-0-0.
2. CONNECTOR LEGEND IDENTIFICATION TO BE PLACED ON SHIELD SIDE OF CABLE IN THIS AREA AS SHOWN.
3. INSPECTION & TEST STAMPS TO BE PLACED AT EACH END OF THE CABLE ASSY.
4. STRIP LENGTH SHOULD BE .62 ± 4/32.

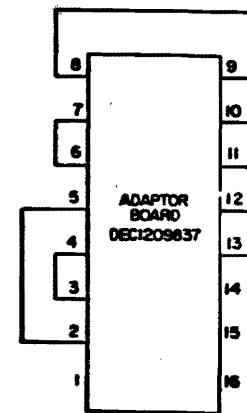


REV	DESCRIPTION	DATE
1	ISSUED FOR DRAWING	11-1-70
2	REVISED DRAWING	11-1-70
3	REVISED DRAWING	11-1-70
4	REVISED DRAWING	11-1-70
5	REVISED DRAWING	11-1-70
6	REVISED DRAWING	11-1-70
7	REVISED DRAWING	11-1-70
8	REVISED DRAWING	11-1-70

2	CONNECTOR, 40 SOCKET	1211206	2				
1	CABLE, 40 COND. FLAT W/SHIELD	1700206	1				
DESCRIPTION		DWG. PART. NO.	ITEM NO.				
UNLESS OTHERWISE SPECIFIED DIMENSIONS ARE IN INCHES							
ANGLES 90°	CLASS OF ACCURACY (CHECK ONE)	NOMINAL DIMENSION RANGE INCHES					
		1/16 - 1/8	1/8 - 1/4	1/4 - 1 1/2	1 1/2 - 4		
SURFACE QUALITY IN MICRONS	MEDIUM	1.00	1.00	1.01	1.01	1.02	1.02
		1.02	1.02	1.03	1.03	1.04	1.04
QUANTITY & VARIATION	PREFERRED						
 THIRD ANGLE PROJECTION REMOVE BURRS AND BREAK SHARP CORNERS DO NOT SCALE DWG MATERIAL FINISH	DRWD. FONTAINE 8-28-70	FIRST USED ON					
	CHKD. FLEMING 8-28-70	digital					
	ENGR. GARDNER 9-3-70	TITLE					
	PROD. ENGGARDNER 9-3-70	BC08R CABLE					
SCALE	NEXT HIGHER ASSY.	SIZE CODE	NUMBER				
1 OF 1		DUA	BC08R-0-0				
			M				

SIZE CODE NUMBER REV. A B CS 5408776-0-1

THIS SCHEMATIC IS FURNISHED ONLY FOR TEST AND MAINTENANCE PURPOSES. THE CIRCUITS ARE PROPRIETARY IN NATURE AND SHOULD BE TREATED ACCORDINGLY. COPYRIGHT 1970 BY DIGITAL EQUIPMENT CORPORATION



REVISIONS	CHK'G	NO	REV.
1	✓	000001	A

DRN	DATE
ARMY Moore	9/22/70
CHK'D	DATE
EMO	DATE
PROD	DATE

TRANSISTOR & DIODE CONVERSION CHART			
DEC	EIA	DEC	EIA

digital
EQUIPMENT CORPORATION
MAYNARD MASSACHUSETTS

TITLE	PRIORITY JUMPER LEVEL #4
NUMBER	5408776
SIZE	B
CODE	CS
NUMBER	5408776-0-1
REV.	A
PRINTED CIRCUIT REV.	A B

DEC FORM NO 098 102

M5726 Pa

DIST. 324,434 Pink

ENGINEERING SPECIFICATION **CONTINUED** CONTINUATION SHEET

TITLE PRELIMINARY DR11-K SPECIFICATION, CHECKOUT AND ACCEPTANCE PROCEDURE

7. If the DR11-K is system installed run the DR11 module of DEC-X-11 as a system test in accordance with DEC-X-11 specifications.

COULTER MODEL "S" CONFIGURATION

When the DR11-K option is specifically ordered as a Coultter Model "S" interface, the following solder jumpers and switch configurations are performed.

Solder Jumper

W1-C W2-C W3-C W4-C
W5-B W6-B W7-B W8-B W9-B W10-B W11-B W12-B
W13-B W14-B W15-B W16-B W17-B W18-B W19-B W20-B

Switches On

SI-4 SI-1 SI-3 SI-2

TESTING A COULTER CONFIGURED DR11-K

1. Set up the M7847 for Coultter Configuration
2. Start the diagnostic in the following test configurations:
 - a) All input bits are non-latching (177777)
 - b) Bits 15 through 12 are interrupting (170000)
 - c) Bits 11 through 00 are negative inputs (000000)
 - d) Bits 15 through 12 are transition inputs (170000)
3. Run the diagnostic for 15 minutes.

SIZE	CODE	NUMBER	REV
A	52	DR11-K-2	