

TITLE	SHEET	OF	3	SIZE	CODE	NUMBER	REV
LS11 PRINTER INTERFACE	B	DD				LS11-Ø	A

CUSTOMER PRINT SET		ELECTRICAL					CUSTOMER PRINT SET		MECHANICAL						
	MFG. SET	FIND NO.	DRAWING NO.	REV	NO OF SHT	DESCRIPTION	OPTION NO./FILE DATE		MFG. SET	FIND NO.	DRAWING NO.	REV	NO OF SHT	DESCRIPTION	OPTION NO./FILE DATE
X		1	C-UA-LS11- \emptyset - \emptyset		1	LS11 PRINTER INTERFACE				1	C-UA-LS11- \emptyset - \emptyset		1	LS11 PRINTER INTERFACE	
X			D-IA-7009087-0-0	#	1	LS11 INTERFACE CABLE					D-IA-7009087-0-0		1	LS11 INTERFACE CABLE	
			A-SP-LS11- \emptyset -1		6	ENGINEERING SPECIFICATION									
			A-SP-LS11- \emptyset -2		6	ACCEPTANCE PROCEDURE									
			A-SP-LS11- \emptyset -3		4	TEST PROCEDURE									
X			A-SL-LS11- \emptyset -4		1	SOFTWARE LIST									
X			A-AL-LS11- \emptyset -5		1	ACCESSORY LIST									
		2	C-IA-5408776-0-0		1	PRIORITY JUMPER LEVEL #4				2	C-IA-5408776-0-0		1	PRIORITY JUMPER LEVEL #4	
X			B-CS-5408776-0-1	#	1	CIRCUIT SCHEMATIC					K-CO-5408776-0-4		1	X-Y COORDINATE HOLE LOCATION	
			K-CO-5408776-0-4		1	X-Y COORDINATE HOLE LOCATION					B-MH-5408776-0-6		1	ASSY/DRILLING HOLE LAYOUT	
			B-MH-5408776-0-6		1	MODULE ECO HISTORY									
		3	C-AH-5408776-0-5		1	ASSY/DRILLING HOLE LAYOUT									
X		4	D-CS-M7258- \emptyset -1	#	4	PRINTER INTERFACE				3	D-IA-5008775-0-0		1	ETCHBOARD	
			K-CO-M7258- \emptyset -4		1	X-Y COORDINATE HOLE LOCATION					C-AH-5408776-0-5		1	ASSY/DRILLING HOLE LAYOUT	
			D-AH-M7258- \emptyset -5		1	ASSY/DRILLING HOLE LAYOUT									
			B-MH-M7258- \emptyset -6		1	MODULE ECO HISTORY				4	D-CS-M7258- \emptyset -1		5	PRINTER INTERFACE	
											K-CO-M7258- \emptyset -4		1	X-Y COORDINATE HOLE LOCATION	
											D-AH-M7258- \emptyset -5		1	ASSY/DRILLING HOLE LAYOUT	

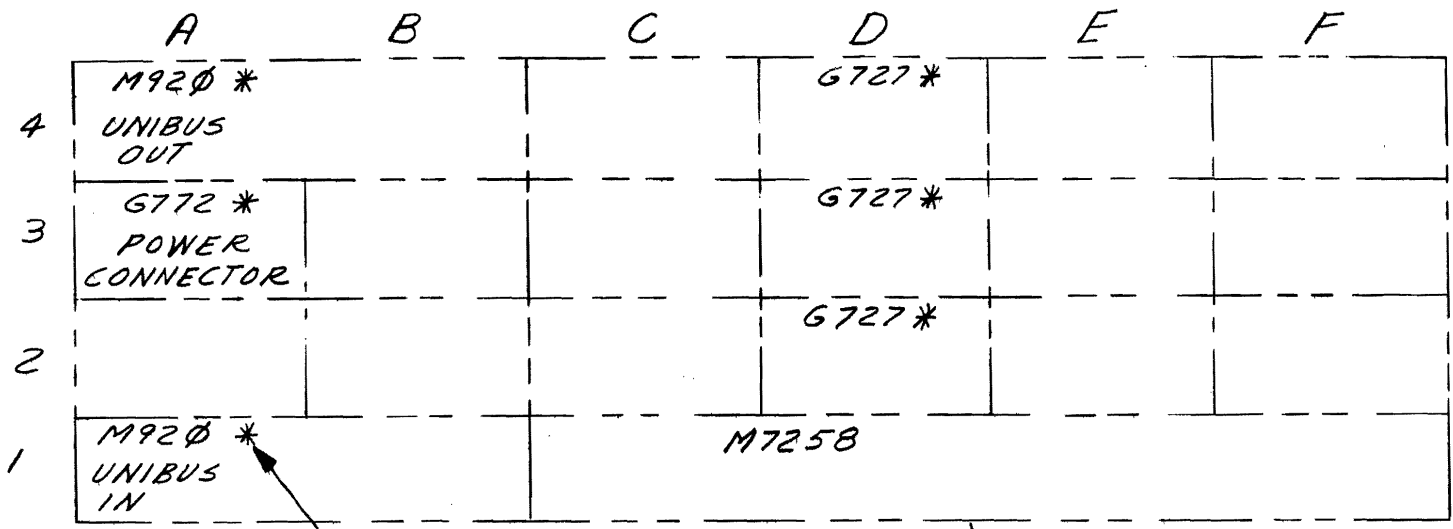
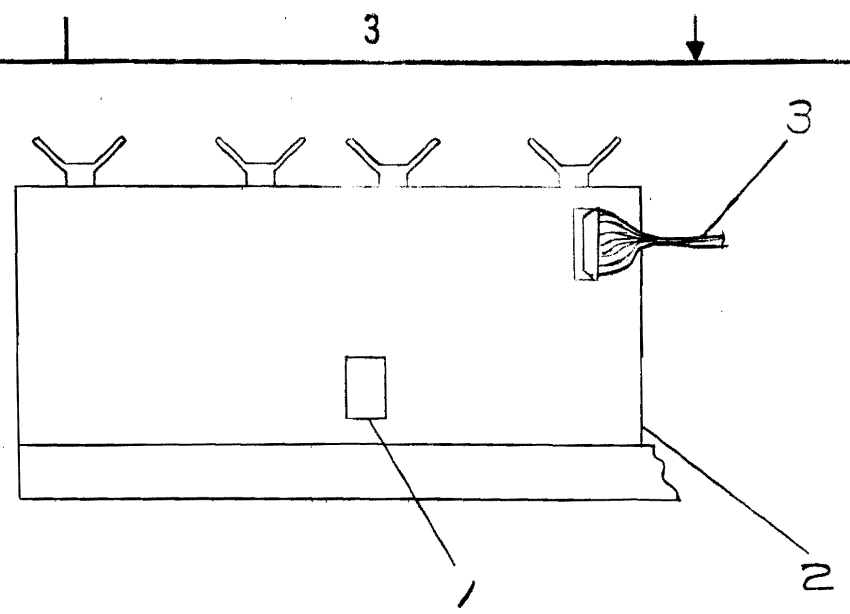
CUSTOMER PRINT SET CODES
X = PRINT OF DOCUMENT INCLUDED IN PRINT SET
C = INCLUDES ALL PRINTS INDICATED ON DOCUMENT
S = CONFIDENTIAL AUTHORIZED SIGNATURE REQUIRED

TITLE: LS11 PRINTER INTERFACE
SHEET 3 OF 3
SIZE CODE: B DD
NUMBER: LS11- \emptyset
REV: A

This drawing and specifications, herein, are the property of Digital Equipment Corporation and shall not be reproduced or copied or used in whole or in part as the basis for the manufacture or sale of items without written permission.

COPYRIGHT ©
DIGITAL EQUIPMENT CORPORATION

NOTES:
1. ITEMS INDICATED WITH ASTERICKS (*) ARE SHOWN FOR REFERENCE ONLY AND ARE NOT PART OF THIS UNIT.



SEE NOTE 1

DD11-A *

1	CABLE, LS11 INTERFACE	D-1A-7007087250	3
1	PRINTER INTERFACE	D-CS-M7258-1	2
1	PRIORITY JUMPER LEVEL 4	G1A-540877600	1

FIRST USED ON OPTION/MODEL		QTY.	DESCRIPTION	PART NO.	ITEM NO.
PDP11					
UNLESS OTHERWISE SPECIFIED DIMENSION IN INCHES. TOLERANCES		PARTS LIST			
DECIMALS	ANGLES	DATE	digital EQUIPMENT CORPORATION MAYNARD MASSACHUSETTS		
.XXX = .005	± 0° 30'	10-5-72	PRINTER INTERFACE		
.XX = .02		11-16-72			
.X = .1					
REMOVE BURRS AND BREAK SHARP CORNERS SURFACE QUALITY ✓					
MATERIAL	NEXT HIGHER ASSY.	SIZE CODE	NUMBER	REV.	
+ +	BDD-LE11	CUA	LS11	Ø-Ø	
FINISH	SCALE	SHEET		DIST.	
+ +	NONE	1 OF 1		5	

REV. NUMBER
CUA LS11-Ø-Ø

REV.	
CHANGE NO.	
CHK	

This drawing and specifications, herein, are the property of Digital Equipment Corporation and shall not be reproduced or copied in whole or in part as the basis for the manufacture or sale of items without written permission.

COPYRIGHT ©
DIGITAL EQUIPMENT CORPORATION

NOTES:

- PIN NOTATION THROUGH-OUT IS ORDERED UPON MODULE PLACEMENT IN THE SYSTEM UNIT. MODULE REFERENCE ALONE IS OBTAINED BY CONVERTING THE 1st LETTER ACCORDING TO THE PIN NOMENCLATURE CHART AT THE RIGHT.
- JUMPERS TO BE USED AT CONNECTIONS A3-A12, Y2-V8, J1-J14, N1.
- ON ITEM NO. 20, ALL IC CHIPS MUST BE EITHER DEC 380'S OR ITS SUBSTITUTE 11380 IC'S. COMBINATIONS ARE NOT ALLOWED ON THE SAME OPTION.

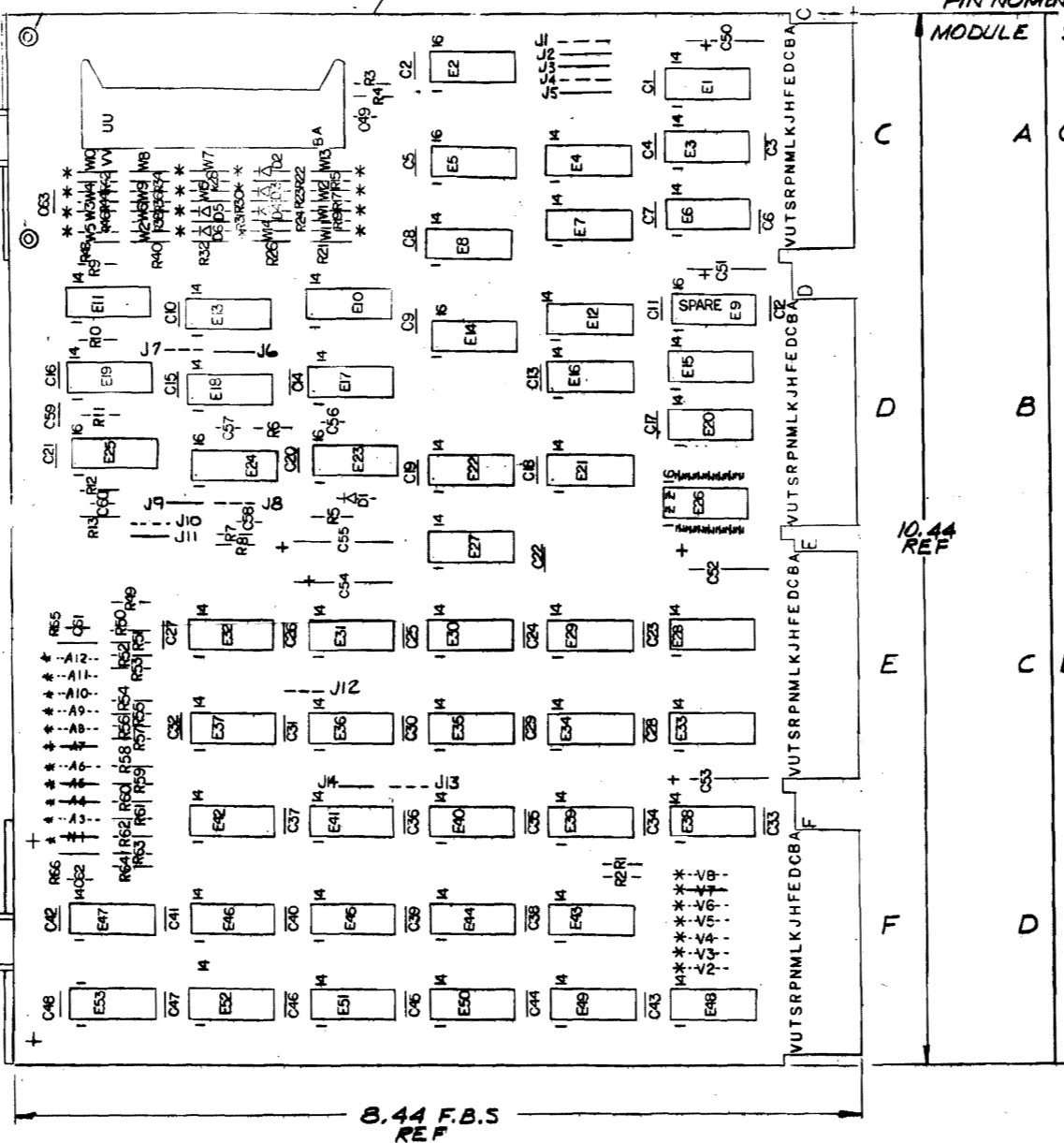
40 REF

41

ALLOWABLE SUBSTITUTION LIST			
ORIG. PART NO.	SUBSTITUTE DESCRIPTION	PART NO.	ITEM NO.
1909485	IC.11380	1911113	28

JUMPER TABLE		
JUMPER DESIGNATION	UNIT NO. LSH	UNIT NO. LVII
J1	OUT	IN
J2	IN	OUT
J3	IN	IN
J4	OUT	OUT
J5	IN	IN
J6	IN	OUT
J7	OUT	IN
J8	OUT	IN
J9	IN	OUT
J10	OUT	IN
J11	IN	OUT
J12	OUT	OUT
J13	OUT	OUT
J14	IN	IN
W5	OUT	IN
W1-W4, W6-W15	IN	IN
N1	IN	IN

** SEE ALLOWABLE SUBSTITUTION LIST & NOTE 3.

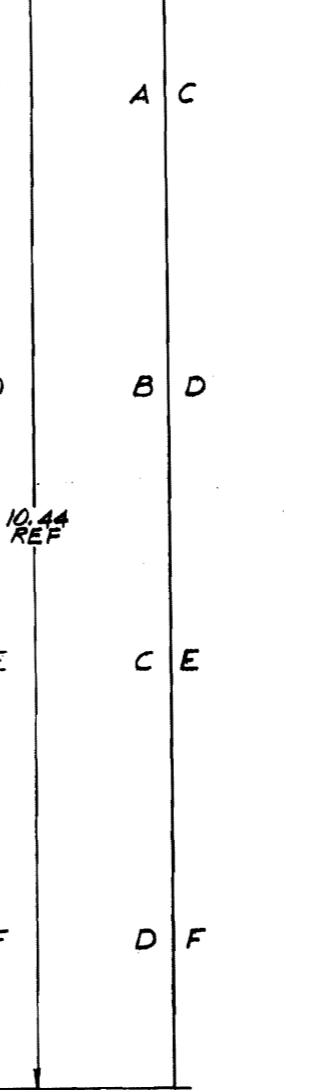


CA2, DA2, EA2, FA2 +5V

6.8µF 35V ±20%	6.8µF 35V ±20%	6.8µF 35V ±20%	6.8µF 35V ±20%	.010F, 100V	.01µF 100V 20%
C50	C51	C52	C63	C1 THRU C40	C63

CC2, DC2, EC2, FC2, CT1, DT1, ET1, FT1

PIN NOMENCLATURE MODULE SYSTEM UNIT



QTY	REF DESIGNATION	DESCRIPTION	PART NO.	ITEM NO.
		X-Y COORDINATE HOLE LOCATION	K-CO-M7258-B-4	1
		ASSY/DRILLING HOLE LAYOUT	D-H-M7258-B-5	2
		MODULE ECO HISTORY	E-1258-B-6	3
		ETCHED CIRCUIT	56-1232	4
3	C59, C60, C57	CAP 47PF, 100V 5% D.M.	1000011	5
1	C82	CAP 330PF 100V 5% D.M.	1000023	6
1	C81	CAP 470PF 100V 5% D.M.	1000024	7
4	C50-C53	CAP 6.8UF 35V 20% S.TANT	1000067	8
50	C1-C49, C63	CAP .01UF 100V 20% DISC	1001610	9
2	C54, C55	CAP 22UF 35V 20% S.TANT	1002473	10
6	D1-D6	DIODE D664	1100114	11
1	E26	SOCKET I.C.	1209838	12
1		CONN. BERG 40 PIN	1209941	13
		RES. 47, 1/4W, 5%	1300202	14
1	R85	RES. 100 1/4W, 5%	1300229	15
1	R3	RES. 330 1/4W, 5%	1300295	16
1	R1	RES. 380, 1/4W, 5%	1300309	17
22	R15, R17, R19, R21-R24, R26, R28, R30-R32, R34, R36, R38, R40, R44, R46, R48, R50, R51, R53	RES. 1K, 1/4W, 5%	1300365	18
18	R5, R7, R9, R10, R13, R49, R52-R52, R64	RES. 10K, 1/4W, 5%	1300479	19
1	R2	RES. 180, 1/4W, 5%	1301322	20
1	R4	RES. 750, 1/4W, 5%	1301401	21
4	R6, R8, R11, R12	RES. 30K, 1/4W, 5%	1302384	22
1	E17	IC DEC 7474	1905547	23
3	E18, E45, E52	IC DEC 7400	1905575	24
3	E4, E7, E8	IC DEC 7430	1905578	25
3	E27, E35, E44	IC DEC 7402	1909004	26
1	E36	IC DEC 7400	1909058	27
10	E1, E3, E18, E20, E28, E29, E30, E33, E34, E39	IC DEC 380	1909485 **	28
3	E51, E47, E53	IC DEC 74174	1909687	29
1	E22	IC DEC 7404	1909886	30
5	E8, E31, E38, E43, E48	IC DEC 8801	1909705	31
3	E32, E37, E42	IC DEC 8242	1909712	32
3	E12, E40, E41	IC DEC 8815	1909713	33
4	E10, E11, E13, E19	IC DEC 7437	1910091	34
4	E15, E21, E49, E50	IC DEC 7408	1910155	35
3	E23, E24, E25	IC DEC 74123	1910436	36
2	E2, E5	IC DEC 74175	1910651	37
1	E14	IC DEC 74174	1910652	38
8		EYELET #6S4-7 EB STIMPSON	9006732	39
4		HANDLE FLIP CHIP-MAGENTA	9008337-06	40
1	E46	IC DEC 74104	1909931	41
1	R42	RES 220 1/4W 5%	1300271	42
2	C56, C58	CAP 100 PF, 100V, 5% DM	1000016	43
14	W1-W4, W6-W15	INSULATED JUMPERS	9001985 *	44

FIRST USED ON OPTION MODEL PDP 11

PARTS LIST			
DRG.	DATE	CHK'D.	DATE
DRG.	DATE	CHK'D.	DATE
ENG.	DATE	CHK'D.	DATE
PROJ. ENG.	DATE	CHK'D.	DATE
PROD.	DATE	CHK'D.	DATE
NEXT HIGHER ASSY			
C-1258-B-6			
C-1258-B-7			
SCALE	SIZE CODE		
SHEET 1 OF 4	NUMBER M7258-0-1		
REV. E			

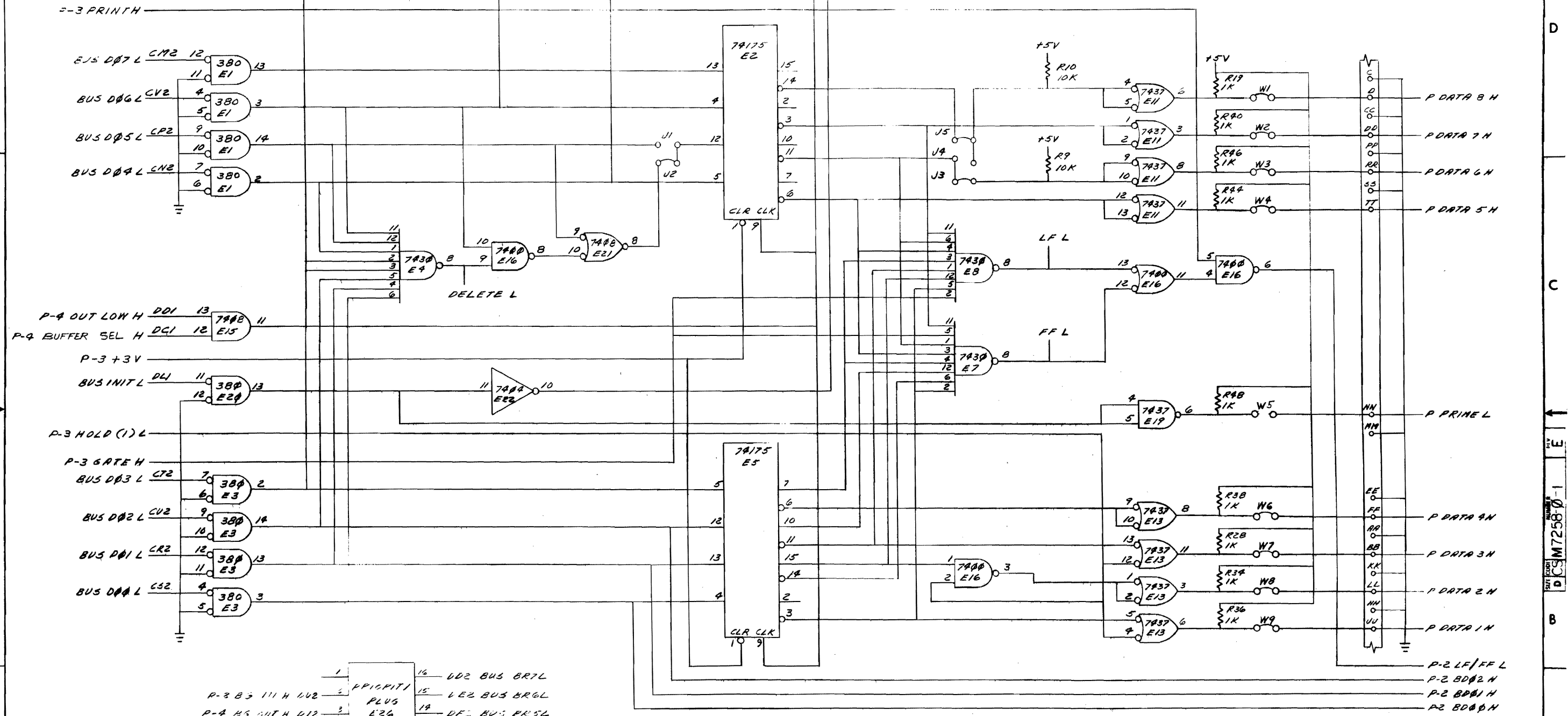
SEMICONDUCTOR CONVERSION CHART			
DEC. NO.	EIA NO.	DEC. NO.	EIA NO.

IC PIN LOCATIONS		
IC TYPE	GND	+5V
74123	8	16
74174	8	16
74175	8	16
380	1	8

GND AND 5V ARE USUALLY PIN 7 AND 14 RESPECTIVELY EXCEPTIONS ARE STATED ABOVE

This drawing and specifications herein are the property of Digital Equipment Corporation and shall not be reproduced or copied or used in whole or in part as the basis for the manufacture or sale of items without written permission.

© DIGITAL EQUIPMENT CORPORATION



- | | | | |
|---|----------|----|----------------------|
| 1 | PPICRIT1 | 16 | UD2 BUS BR7L |
| 2 | PLUS | 15 | LE2 BUS BR6L |
| 3 | E26 | 14 | DF2 BUS BR5L |
| 4 | | 13 | UH2 BUS BR4L |
| 5 | | 12 | US2 P-4 BUS ALPQESTL |
| 6 | | 11 | DM2 BUS B87 IN H |
| 7 | | 10 | UL2 BUS B87 OUT H |
| 8 | | 9 | VM2 BUS B86 IN H |

REV	NO	DATE
1		

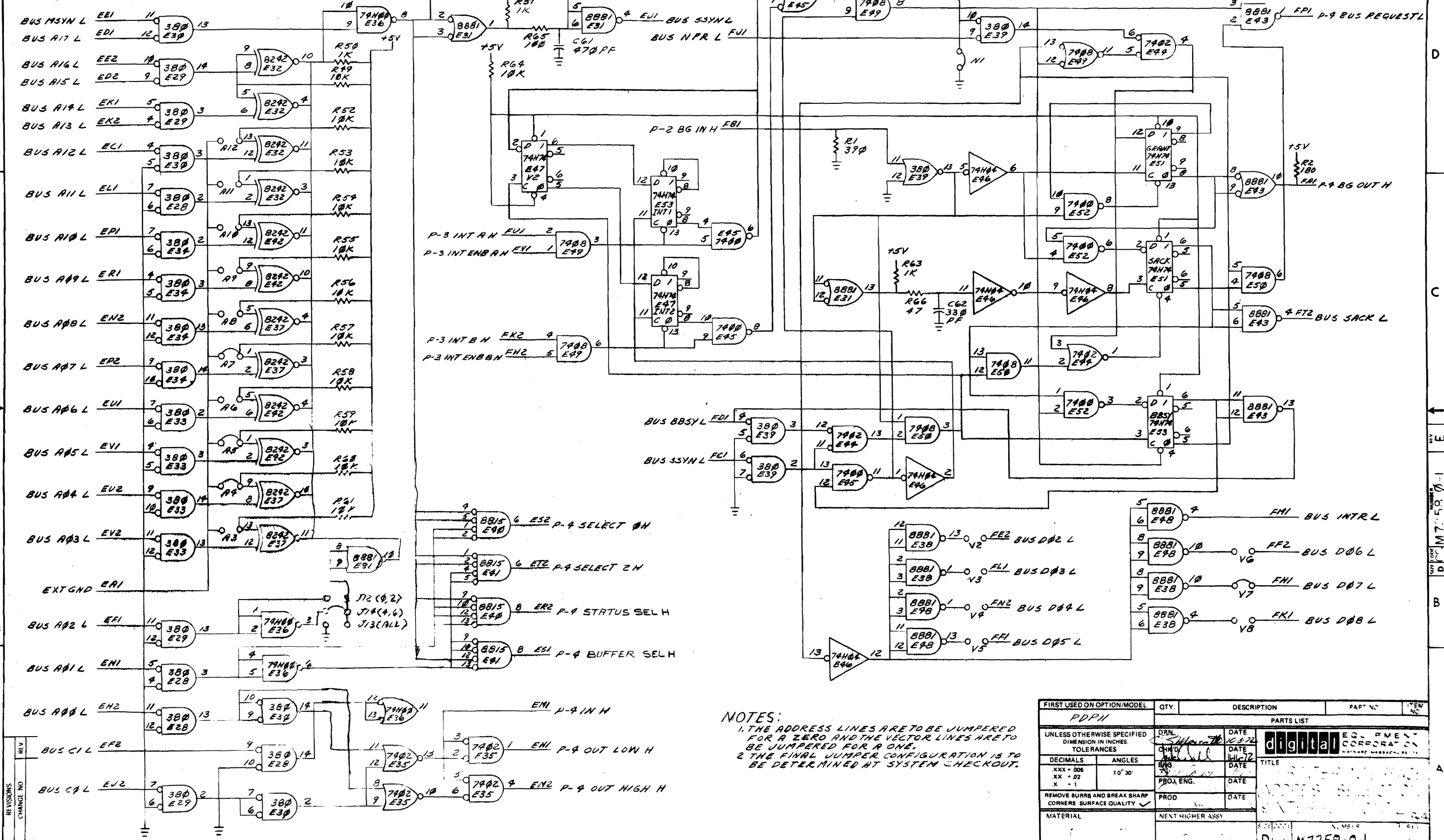
REVISIONS	CHK	DATE
1		

FIRST USED ON OPTION/MODEL	QTY.	DESCRIPTION	PART NO.	ITEM NO.
PDF11				
UNLESS OTHERWISE SPECIFIED DIMENSION IN INCHES. TOLERANCES				
DECIMALS	ANGLES	TITLE		
XXX + .005	±0° 30'	PRINTER INTERFACE (DATA REGISTER)		
XX - .02		D-2		
X - .1		REV E		
MATERIAL	NEXT HIGHER ASSY.	SIZE CODE NUMBER		
FINISH	SCALE	DCS M7258-01		
	SHEET	DIST		
	2 OF 4			

This drawing and specifications herein are the property of Digital Equipment Corporation and shall not be reproduced or used in whole or in part on the basis for the manufacture or sale of items without written permission.

COPYRIGHT © DIGITAL EQUIPMENT CORPORATION

REV. 10-72
M7258-0-1



NOTES:
 1. THE ADDRESS LINES ARE TO BE JUMPERED FOR A ZERO AND THE VECTOR LINES ARE TO BE JUMPERED FOR A ONE.
 2. THE FINAL JUMPER CONFIGURATION IS TO BE DETERMINED AT SYSTEM CHECKOUT.

FIRST USED ON OPTION/MODEL	QTY.	DESCRIPTION	PART NO.	ITEM NO.
PDP-11				
PARTS LIST				
UNLESS OTHERWISE SPECIFIED DIMENSION IN INCHES TOLERANCES	DRN 10-3-72	DATE	digital EQUIPMENT CORPORATION	
DECIMALS	CHD 11-1-72	DATE	TITLE	
ANGLES	ENG 11-1-72	DATE	M7258-0-1	
XXX = 008 XX = 02 X = 1	PROJ. ENG.	DATE		
REMOVE BURRS AND BREAK SHARP CORNERS SURFACE QUALITY	PROD.	DATE		
MATERIAL	NEXT HIGHER ASSY			
FINISH	SCALE	D		
	SHEET	4 4		

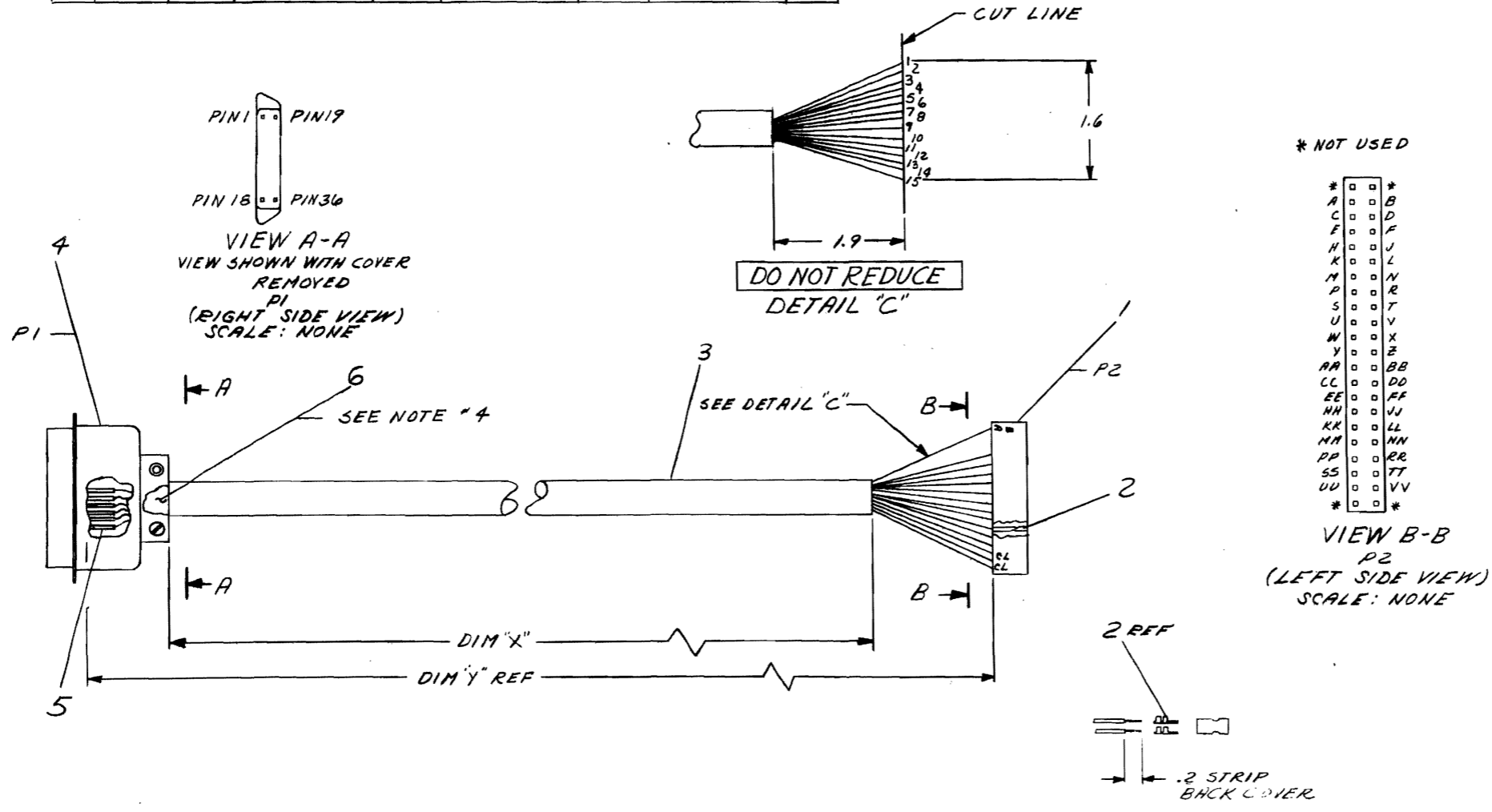
This drawing and specifications herein are the property of Digital Equipment Corporation and shall not be reproduced or copied in whole or in part without the express written permission of Digital Equipment Corporation.

THIS DOCUMENT CONTAINS CONFIDENTIAL INFORMATION. IT IS TO BE CONTROLLED AND NOT TO BE DISCLOSED TO PERSONS OUTSIDE THE EMPLOY OF DEC BY DEC PERSONNEL SO AUTHORIZED BY DEC. AND ONLY FOR USE IN SUCH OTHER AREAS AS THE DESIGN, PRODUCTION AND MANUFACTURE OF PRODUCTS FOR DEC.

WIRE TABLE							
ITEM NO.	DESCRIPTION	FROM	TO	CUT POINT			
3	24 TWP	RED PI-2	SOLDER P2-JJ	ITEM 2 PDATA 1	10		
		GRY PI-20	ITEM 5 P2-HH	RETURN			
		RED PI-3	P2-LL	PDATA 2			
		BRN PI-31	P2-KK	RETURN		11	
		RED PI-4	P2-BB	PDATA 3		7	
		GRN PI-22	P2-AA	RETURN			
		WHT PI-5	P2-FF	PDATA 4		9	
		ORN PI-23	P2-EE	RETURN		14	
		WHT PI-6	P2-TT	PDATA 5		13	
		GRN PI-24	P2-SS	RETURN		8	
3	24 TWP	RED PI-7	P2-RR	PDATA 6	1		
		ORN PI-25	P2-PP	RETURN			
		BLU PI-8	P2-DD	PDATA 7			
3	24 TWP	BLK PI-26	P2-CC	RETURN	1		
		ORN PI-9	P2-D	PDATA 8			
3	24 TWP	BLK PI-27	ITEM 5 P2-C	ITEM 2 RETURN	1		

WIRE TABLE							
ITEM NO.	DESCRIPTION	FROM	TO	CUT POINT			
3	24 TWP	GRN PI-32	SOLDER P2-R	ITEM 2 PFAULT	3		
		BLK —	ITEM 5 P2-P	RETURN			
		WHT PI-14	P2-T	PHDWR (SS)		4	
		BRN —	P2-S	RETURN		5	
		BRN PI-12	P2-V	PAPER (PE)		2	
		BLK —	P2-U	RETURN		15	
		WHT PI-13	P2-N	PSELECT (SLCT)		6	
		BLU —	P2-M	RETURN			
		YEL PI-1	P2-VV	STROBE			
		GRN PI-19	P2-UU	RETURN			
3	24 TWP	WHT PI-10	P2-X	PDEMAND (CKNLS)	12		
		GRY PI-28	P2-W	RETURN			
		GRY PI-31	P2-NN	INIT (PRIME)			
3	24 TWP	BLK PI-30	ITEM 5 P2-MM	ITEM 2 RETURN	1		

- NOTES:**
- P2 PINS (ITEM 2) ARE TO BE MACHINE CRIMPED.
 - P1 PINS ARE TO HAVE TUBING (ITEM 5)
 - WIRES HAVING NO P1 CONNECTIONS ARE TO BE CUT FLUSH WITH THE OUTER COVER OF THE CABLE AT THE P1 END.
 - CABLE DIAMETER TO BE INCREASED BY WRAPPING 1/2" WIDE TAPE (ITEM 6) AT THE P1 END TO INSURE THAT THE CABLE CLAMP GRIPS CABLE FIRMLY.
 - ALL UNUSED WIRES ARE TO BE CUT FLUSH WITH THE OUTER COVER OF THE CABLE AT BOTH ENDS.



NUMBER	VARIATION
7009087-25	25 FT ± 3 IN. 25 FT 3 IN. ± 3 IN.

QTY.	DESCRIPTION	PART NO.	ITEM NO.
6	AIR TAPE, DBL COATED #4032	9007834	6
5	AIR TUBING	9107295-11	5
4	1 CONN, AMPHENOL #57-30360	1203466-1	4
3	AIR CABLE, 36 COND, 18 PR	9107700	3
2	30 SOCKET, BERG #48015	1210089-05	2
1	HOUSING	1210090-0-0	1

FIRST USED ON OPTION/MODEL P1/P2	DRN: [Signature]	DATE: [Date]	PARTS LIST digital EQUIPMENT CORPORATION MAYNARD MASSACHUSETTS
UNLESS OTHERWISE SPECIFIED DIMENSION IN INCHES. TOLERANCES	ENG: [Signature]	DATE: [Date]	
DECIMALS .XXX = .005 .XX = .02 .X = .1	PROJ. ENG.	DATE: [Date]	
ANGLES ±0°30'	PROD. [Signature]	DATE: [Date]	
REMOVE BURRS AND BREAK SHARP CORNERS SURFACE QUALITY	NEXT HIGHER ASSY.		TITLE LSII INTERFACE CABLE
MATERIAL	C-UA-LSII-0-0	SIZE CODE DIA	NUMBER 7009087-0-0
FINISH	SCALE	SHEET	REV.

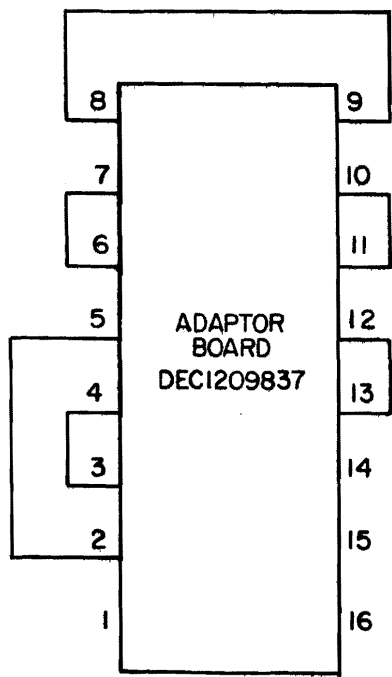
REV. 1
2
3
4
5
6
7
8

REV. 1
2
3
4
5
6
7
8

↓

REV. A	NUMBER 5408776-0-1	SIZE CODE B CS
--------	--------------------	----------------

THIS SCHEMATIC IS FURNISHED ONLY FOR TEST AND MAINTENANCE PURPOSES. THE CIRCUITS ARE PROPRIETARY IN NATURE AND SHOULD BE TREATED ACCORDINGLY. COPYRIGHT 1970 BY DIGITAL EQUIPMENT CORPORATION



REVISIONS CHK CHG NO. REV. 00001 A	DRN. NANCY MOORE	DATE 4/22/70	TRANSISTOR & DIODE CONVERSION CHART				digital EQUIPMENT CORPORATION MAYNARD, MASSACHUSETTS	TITLE PRIORITY JUMPER LEVEL #4 5408776			
	CHK'D <i>[Signature]</i>	DATE 4/23/70	DEC	EIA	DEC	EIA		SIZE B	CODE CS	NUMBER 5408776-0-1	REV. A
	ENG <i>[Signature]</i>	DATE 4/23/70									
	PROD.	DATE									
PRINTED CIRCUIT REV.							A	B			

M5720 P2



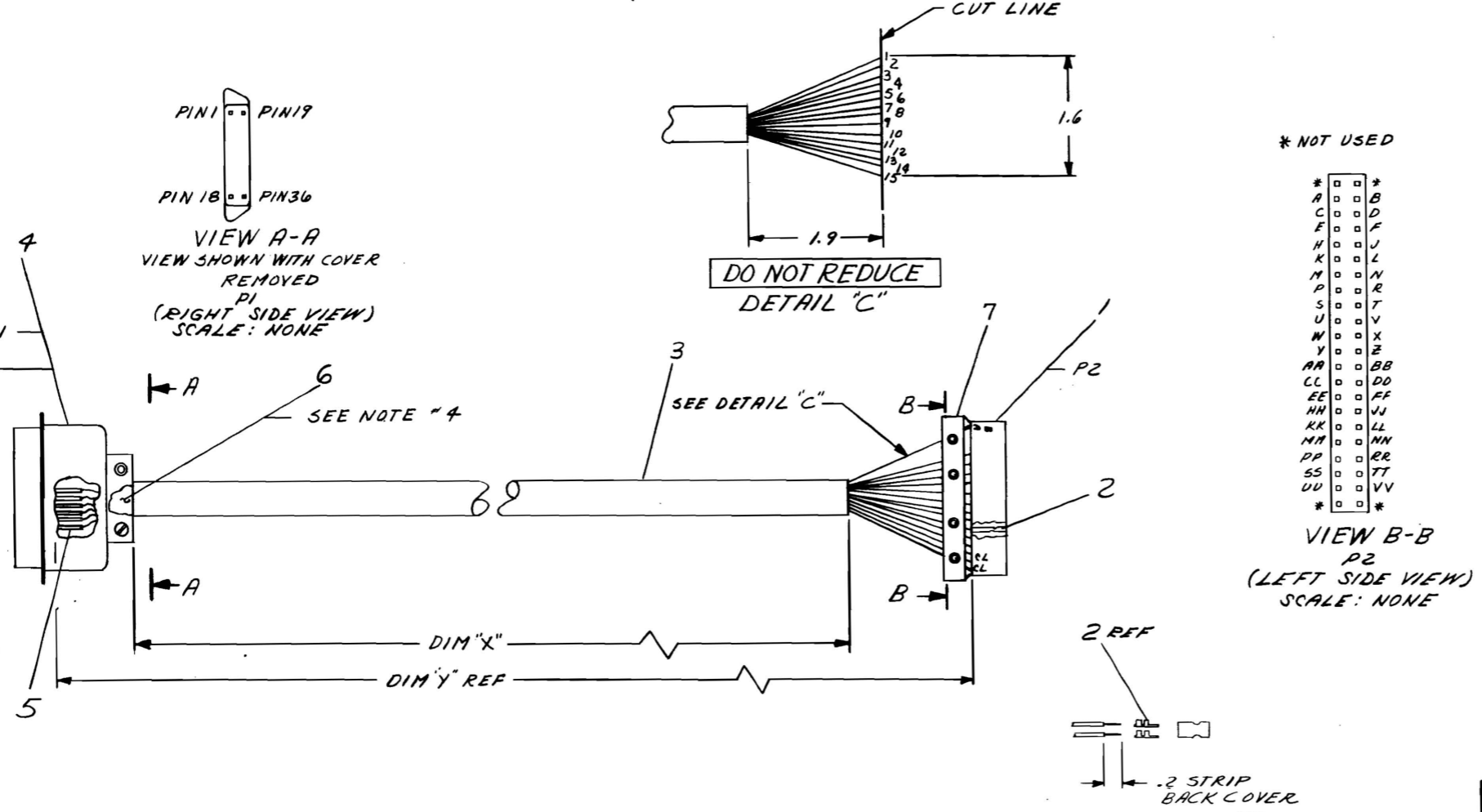
5

DIST. 324,434,433 Pink

WIRE TABLE								WIRE TABLE											
ITEM NO.	AWG	COLOR	CONNECTION FROM	WITH	CONNECTION TO	WITH	SIGNAL	CUT POINT	ITEM NO.	AWG	COLOR	CONNECTION FROM	WITH	CONNECTION TO	WITH	SIGNAL	CUT POINT		
3	24	TWP	RED	PI-2	SOLDER	P2-JJ	ITEM2	PDATA 1	10	3	TWP	GRN	PI-32	SOLDER	P2-R	ITEM2	PFAULT	3	
			GRY	PI-20	ITEM5	P2-HH		RETURN					BLK		ITEM5	P2-P			RETURN
			RED	PI-3		P2-LL		PDATA 2					WHT	PI-14		P2-T			PHDWR (SS)
			BRN	PI-21		P2-KK		RETURN					BRN			P2-S			RETURN
			RED	PI-4		P2-BB		PDATA 3					BRN	PI-12		P2-V			P PAPER (PE)
			GRN	PI-22		P2-AA		RETURN					BLK			P2-U			RETURN
			WHT	PI-5		P2-FF		PDATA 4					WHT	PI-13		P2-N			PSELECT (SLCT)
			ORN	PI-23		P2-EE		RETURN					BLU			P2-M			RETURN
			WHT	PI-6		P2-TT		PDATA 5					YEL	PI-1		P2-VV			STROBE
			GRN	PI-24		P2-SS		RETURN					GRN	PI-19		P2-UU			RETURN
3	24	TWP	RED	PI-7		P2-RR		PDATA 6	8	3	TWP	GRY	PI-31	SOLDER	P2-NN		INIT (PRIME)	12	
			ORN	PI-25		P2-PP		RETURN					GRY	PI-28		P2-W			RETURN
			BLU	PI-8		P2-DD		PDATA 7					BLK	PI-30	ITEM5	P2-MM	ITEM2		RETURN
			BLK	PI-26		P2-CC		RETURN											
			ORN	PI-9	SOLDER	P2-D		PDATA 8											
			BLK	PI-27	ITEM5	P2-C	ITEM2	RETURN											

NOTES:

- P2 PINS (ITEM 2) ARE TO BE MACHINE CRIMPED.
- PI PINS ARE TO HAVE TUBING (ITEM 5)
- WIRES HAVING NO PI CONNECTIONS ARE TO BE CUT FLUSH WITH THE OUTER COVER OF THE CABLE AT THE PI END.
- CABLE DIAMETER TO BE INCREASED BY WRAPPING 1/2" WIDE TAPE (ITEM 6) AT THE PI END TO INSURE THAT THE CABLE CLAMP GRIPS CABLE FIRMLY.
- ALL UNUSED WIRES ARE TO BE CUT FLUSH WITH THE OUTER COVER OF THE CABLE AT BOTH ENDS.



REVISIONS

REV.	DATE	DESCRIPTION
1	11-30-72	INITIAL DESIGN
2	12-1-72	REVISED TO ADD TAPE

CHK: [Signature]
L. CONDON

FIRST USED ON OPTION/MODEL: PDP11

UNLESS OTHERWISE SPECIFIED DIMENSION IN INCHES. TOLERANCES: DECIMALS .XXX ± .005, .XX ± .02, .X ± .1; ANGLES ± 0° 30'

REMOVE BURRS AND BREAK SHARP CORNERS SURFACE QUALITY

MATERIAL: + +

FINISH: + +

DATE: 7-22-72
DATE: 11-14-72
DATE: 11-27-72

DRN: [Signature]
CHK: [Signature]
ENG: [Signature]
PROJ. ENG. [Signature]
PROD. [Signature]

digital CORPORATION
MAYNARD, MASSACHUSETTS

TITLE: LSII INTERFACE CABLE

SIZE CODE: DIA 7009087-0-0
NUMBER: 7009087-0-0
REV. A

SCALE: 1/1
SHEET 1 OF 1