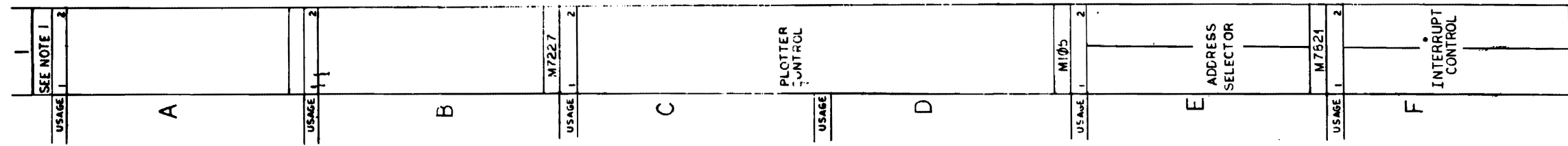


FIRST USED ON OPTION/MODEL	QTY.	DESCRIPTION	PART NO.
PDR11			
UNLESS OTHERWISE SPECIFIED			
DIMENSION IN INCHES			
TOLERANCES			
FRACTIONS ANGLES			
DECIMALS ± 1/64 ± 0.001			
FINAL SURFACE QUALITY REMOVE BURRS AND BREAK SHARP CORNERS			
MATERIAL			
NEXT HIGHER ASSY			
A-ML XY11-0			
SCALE NONE			
SHEET 1 OF 1			
EQUIPMENT CORPORATION			TITLE
DEVICE CONTROL			
DBS 7630070			

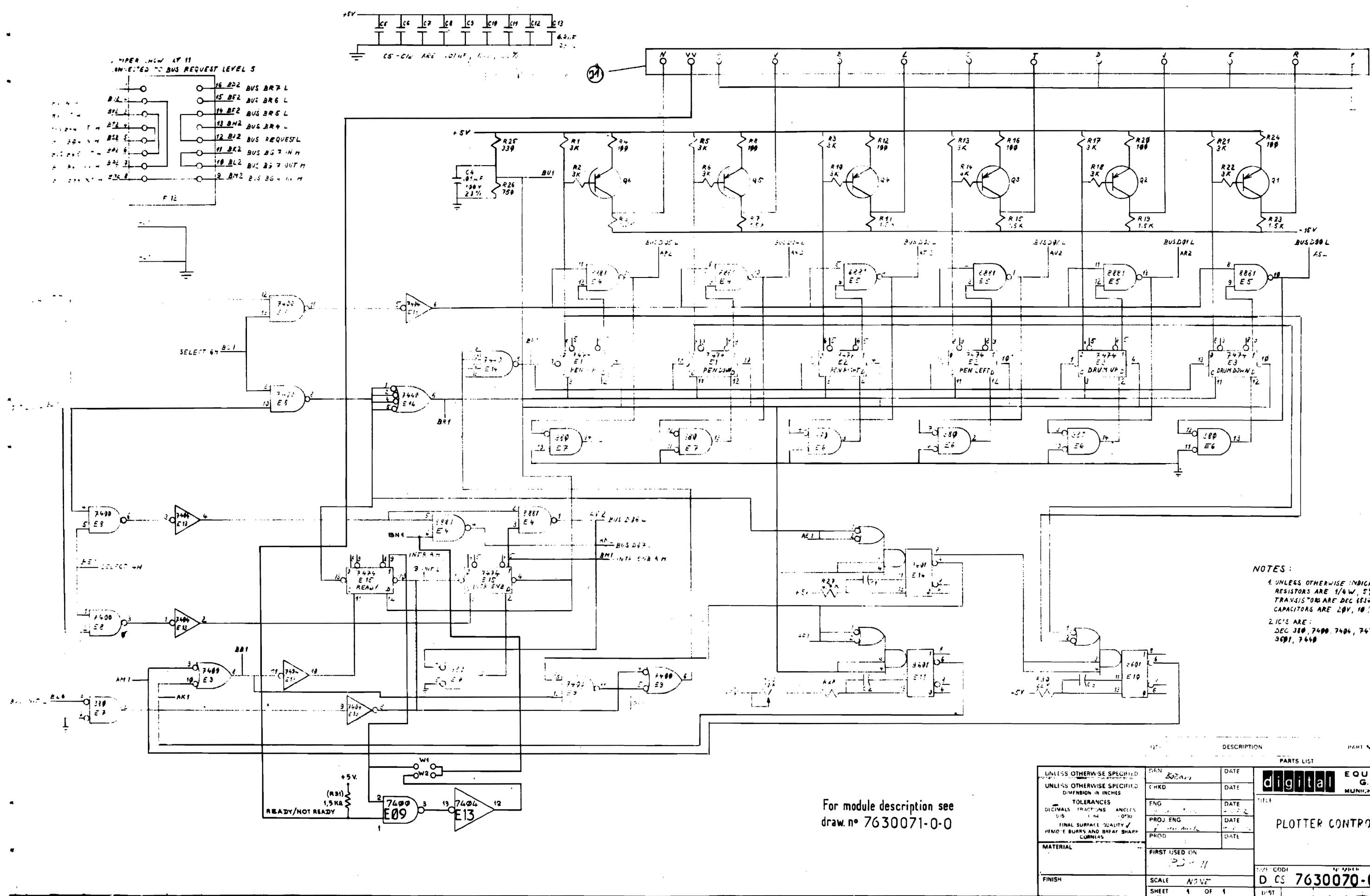
7630070-0-1

NOTE:

1 SLOT 13 OR 14 IN THE KAI1  
 PROCESSOR OR SLOT 1,2,3 OR  
 4 IN THE DD11-A.



FIRST USED ON OPTION/MODEL	QTY.	DESCRIPTION	PART NO.
PDR11			
PARTS LIST			
UNLESS OTHERWISE SPECIFIED DIMENSION IN INCHES. TOLERANCES	DRN. <i>1/2/76</i>	DATE <i>2/2/76</i>	<p><b>MODULE UTILIZATION</b></p>
DECIMALS . ANGLES	CHK'D. <i>1/2/76</i>	DATE <i>2/2/76</i>	
.XXX - .000 .XX - .02 .X - .1	ENG. <i>1/2/76</i>	DATE <i>2/2/76</i>	
REMOVE BURRS AND BREAK SHARP EDGES SURFACE QUALITY	PROD. <i>1/2/76</i>	DATE <i>2/2/76</i>	
MATERIAL	NEXT HIGHER ASSY.		
FINISH	A-MU-XVII-0		DMU 7630070-0-0

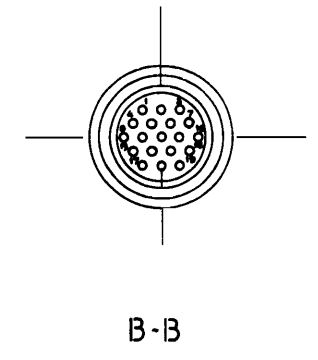
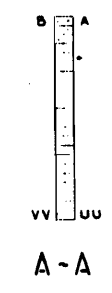
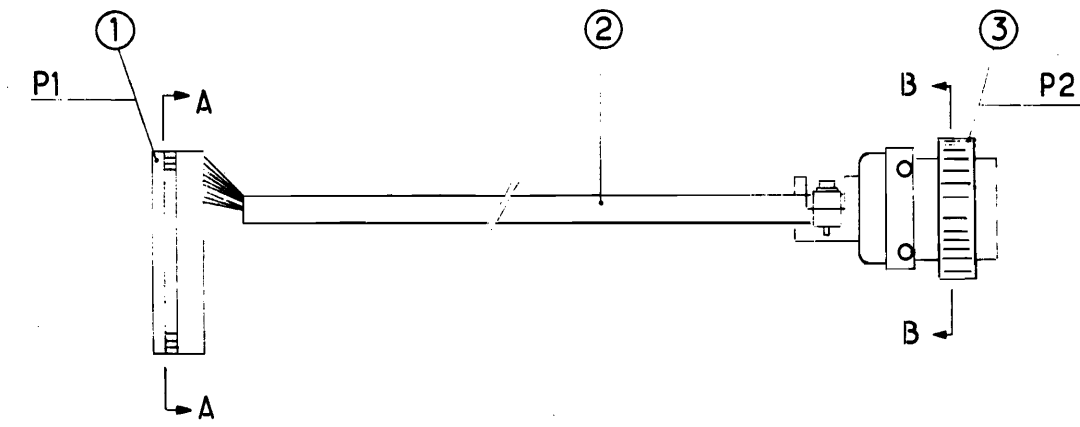


NOTES:  
 1. UNLESS OTHERWISE INDICATED:  
 RESISTORS ARE 1/4W, 5%  
 TRANSISTORS ARE DEC 151-B  
 CAPACITORS ARE 20V, 10%  
 2. IC'S ARE:  
 DEC 380, 7400, 7404, 7474, 8821  
 3691, 7440

For module description see  
 draw. n° 7630071-0-0

UNLESS OTHERWISE SPECIFIED		DATE	PARTS LIST
UNLESS OTHERWISE SPECIFIED		DATE	
DIMENSION IN INCHES		DATE	<b>digital</b> EQUIPMENT G.M.B.H. MUNICH GERMANY TITLE <b>PLOTTER CONTROL</b>
TOLERANCES		DATE	
DECIMALS FRACTIONS ANGLES		DATE	
0.15 1/16 0.030		DATE	
FINAL SURFACE QUALITY		DATE	
HOMOGENEOUS AND BREAK SHARP		DATE	DCS 7630070-0-2 SHEET 4 OF 1
MATERIAL		DATE	
FINISH		DATE	
FIRST USED ON		DATE	SCALE 1/8" = 1" SHEET 4 OF 1

D 7630070-0-2

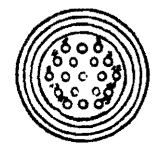
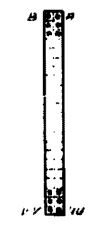
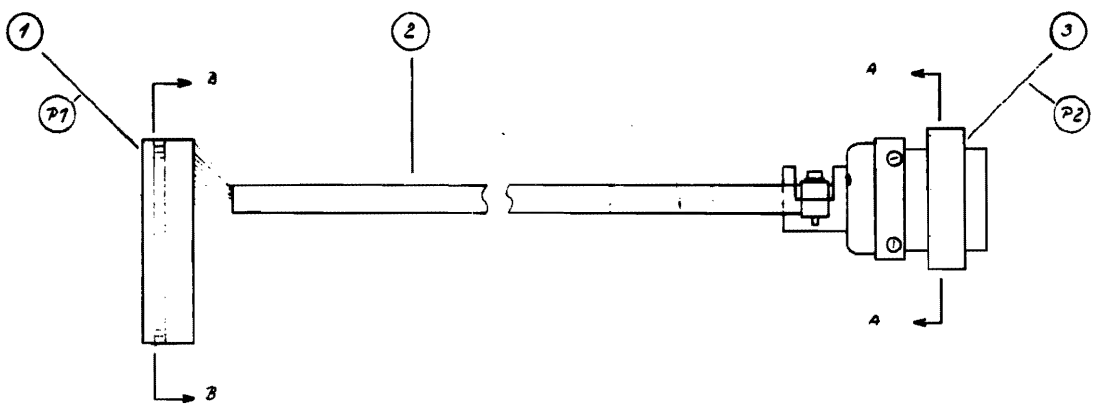


Note - It is necessary to use a filler around the cable to cause a secure holding of the cable to the connector hood.

Signal name	From		to	
	Pin	With	Pin	With
PEN. UP	P1. N	GRIMPED	P2. 9	SOLD
PEN. DOWN	P1. V	↑	P2. 10	↑
CARRIAGE DOWN	P1. L	↑	P2. 4	↑
CARRIAGE UP	P1. T	↑	P2. 3	↑
CHART RIGHT	P1. J	↑	P2. 1	↑
CHART LEFT	P1. R	↑	P2. 2	↑
GND	P1. A	↑	P2. 13	↑
GND	P1. B	↑	P2. 13	↑
GND	P1. C	↑	P2. 13	↑
GND	P1. D	GRIMPED	P2. 13	SOLD

QTY	DESCRIPTION	PART NO.
1	connector IIT cannon P2	SK.19.21c 1/2
1.2	Signalleitung to ADRIG	92.F6.72
1	BERG connector P1	12.10090

UNLESS OTHERWISE SPECIFIED		DRN. J. [Signature]	DATE 26.05.75	<b>digital EQUIPMENT</b> PARIS FRANCE
UNLESS OTHERWISE SPECIFIED		CHK'D.	DATE	
DIMENSION IN INCHES		ENG.	DATE	TITLE <b>Cable HOUSTON DP1 and DP10 PLOTTER</b>
TOLERANCES		PROJ. ENG.	DATE	
DECIMALS ± .005 FRACTIONS ± 1/64 ANGLES ± 0'30" FINAL SURFACE QUALITY ✓ REMOVE BURRS & BREAK SHARP CORNERS		PROD.	DATE	
MATERIAL		FIRST USED ON		PART NO. <b>DAD 7630070-0-3</b> SHEET 1 OF 1
FINISH		SCALE none		



NOTES: IT IS NECESSARY TO USE A FILLER AROUND THE CABLE TO CAUSE A SECURE HOLDING OF THE CABLE TO THE CONNECTOR HOOD

FOR CABLE LENGTH 14.5 IN  
 TWISTED PAIR 24 25A 49416  
 SAUERBROTHERS  
 METZGERBERG BERLIN

SIGNALNAME	FROM		TO		COLOUR
	PIN	WITH	PIN	WITH	
PEN UP	P1-N	CRIMPED	P2-9	SOLD	PINK
PEN DOWN	P1-V		P2-10		WHT/BRN
PEN RIGHT	P1-L		P2-4		GY
PEN LEFT	P1-T		P2-3		BLU
DRUM UP	P1-J		P2-1		WHT
DRUM DOWN	P1-R		P2-2		YEL
GND	P1-A		P2-13		YEL/GRN
GND	P1-B		P2-13		GRN
GND	P1-C		P2-13		BRN
GND	P1-D	CRIMPED	P2-13	SOLD	RED

SIGNALNAME	FROM		TO		COLOUR
	PIN	WITH	PIN	WITH	
PEN UP	P1-N	CRIMPED	P2-9	SOLD	PINK
PEN DOWN	P1-V		P2-10		WHT/BRN
PEN RIGHT	P1-L		P2-4		WHT/GRN
PEN LEFT	P1-T		P2-3		BLU
DRUM UP	P1-J		P2-1		WHT
DRUM DOWN	P1-R		P2-2		YEL
GND	P1-A		P2-13		GRN
GND	P1-B		P2-13		BRN/GRN
GND	P1-C		P2-13		GRN
GND	P1-D		P2-13		RED
GND	P1-E		P2-13		GRN, GY
GND	P1-F	CRIMPED	P2-13	SOLD	GY

FOR DEC STANDARD CABLES  
 TWKT-NO 70-8569

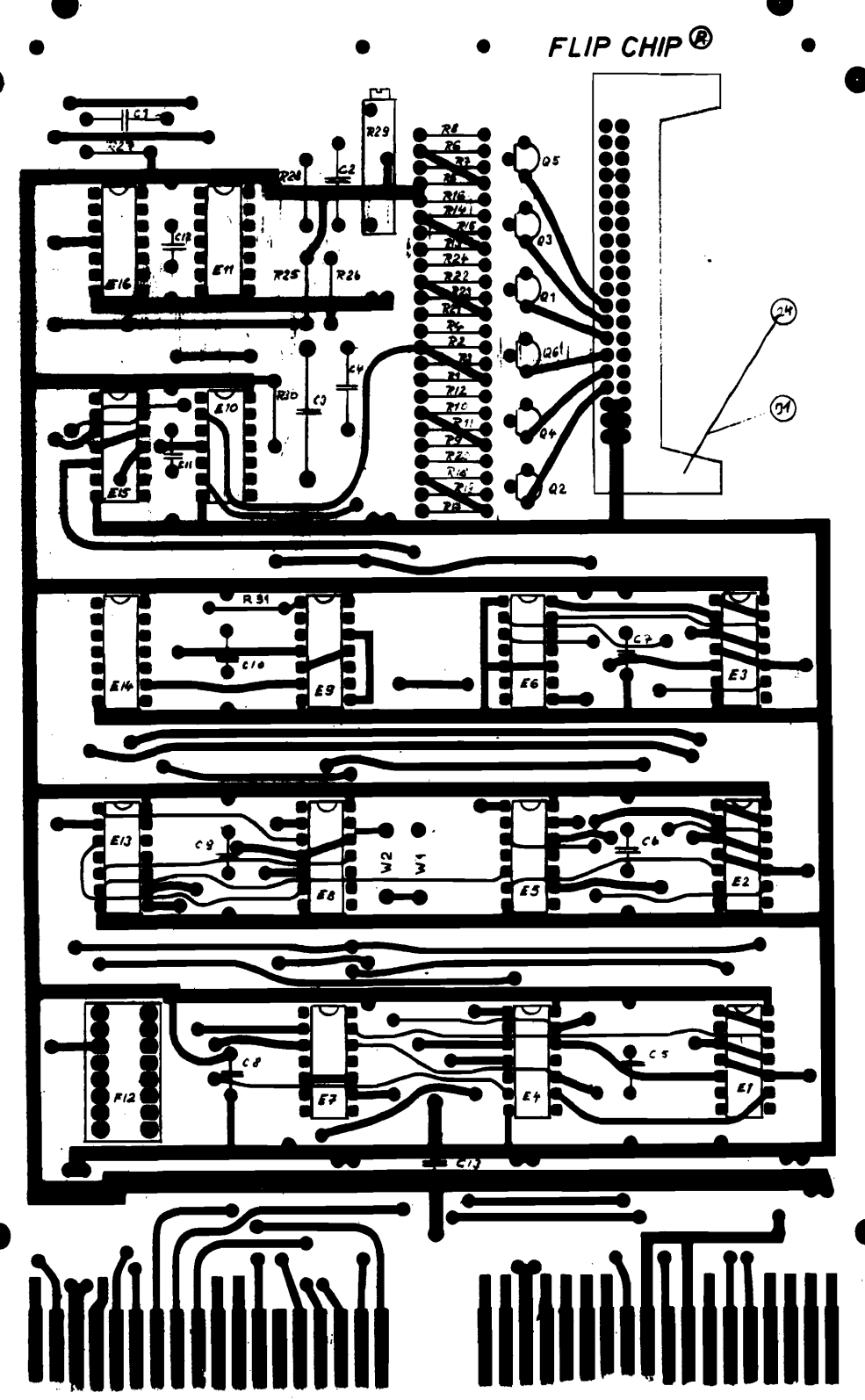
SIGNALNAME	FROM		TO		COLOUR
	PIN	WITH	PIN	WITH	
PEN UP	P1-N	CRIMPED	P2-9	SOLD	ORG
PEN DOWN	P1-V		P2-10		BLK
PEN RIGHT	P1-L		P2-4		WHT
PEN LEFT	P1-T		P2-3		BRN
DRUM UP	P1-J		P2-1		BLU
DRUM DOWN	P1-R		P2-2		RED
GND	P1-N	CRIMPED	P2-13	SOLD	YEL

QTY.	DESCRIPTION	PART No.
1	CONNECTOR IIT BRANDON .72	SK-18-5101/2
1	SIGNALLEITUNG 70-4BR16	8276 78
1	BERG-CONNECTOR .71	12-10099

UNLESS OTHERWISE SPECIFIED DIMENSION IN INCHES TOLERANCES DECIMALS FRACTIONS ANGLES ± .008" ± .01" ± 0°30' FINISH SURFACE QUANTITY REMOVE BURRS AND BREAK SHARP CORNERS	DRN. <i>P. Dreyer</i>	DATE 6.7.73	<b>digital EQUIPMENT</b> <b>G.M.B.H.</b> <b>MUNICH - GERMANY</b>
	CHKD. <i>H. Huber</i>	DATE 6.7.73	
	ENG. <i>H. Huber</i>	DATE 6.7.73	
	PROD. <i>H. Huber</i>	DATE 6.7.73	
MATERIAL	FIRST USED ON	11.12.71	TITLE <b>CABLE</b> <b>CALCOMP 565</b> <b>PLOTTER</b>
FINISH	SCALE 1:1	SHEET 1 OF 1	SIZE CODE <b>DVD 7630070-0</b>

7630070-0-4





STRAP POS.	PLOTTER TYPE	PLOTTING SPEED	REF. DESIGNATION	QTY	DESCRIPTION	PART N°
W1	CALCOMP 563 CALCOMP 565 HOUSTON DP 2 HOUSTON DP 10	200 steps/sec. 300 steps/sec. 300 steps/sec. 300 steps/sec.	R28	1	Resistor 0.2K 1/4 W 5%	13 02179
			C1	1	Capacitor 0.01µF 100V	10 01610
			C2	1	Capacitor 1µF 35V 10%	10 01778
W1	HOUSTON DP4	400 steps/sec.	R28	1	Resistor 0.2K 1/4 W 5%	13 02179
			C1	1	Capacitor 0.47µF 35V 10%	10 03963
			C2	1	Capacitor 0.68µF 35V 10%	10 03964
W2	BENSON 111 BENSON 121	1000 steps/sec. 900 steps/sec.	R28	1	Resistor 10K 1/4 W 5%	13 00479
			C1	1	Capacitor 0.01µF 100V 20%	10 01610
			C2	1	Capacitor 0.22µF 100V 10%	10 00037
			C3	1	Capacitor 3.3µF 20V 10%	10 03884

TIMING ADJUSTMENT TABLE

R31	1	RES. 1.5 KΩ	13 00391
	2	HANDLE, FLIP CHIP MAGELITH	900 8337-6
D1	1	BERG CONNECTOR	120 9947
F12	1	SOCKET	
Q1-Q6	6	TRANSISTOR DEC 6534 B	15 11409
R29	1	RES 10K POT	13 914310
R28			
R30	1	RES 22K, 1/4 W, 5%	13 01804
R26	1	RES 750Ω, 1/4 W, 5%	13 01401
R27	1	RES 4.7K, 1/4 W, 5%	13 00447
R1, R2, R3, R6, R9, R10 R8, R7, R11, R18, R21, R22	10	RES 3K 1/4 W, 5%	13 00432
R3, R4, R11, R15, R19, R23	6	RES 1.5K 1/4 W, 5%	13 00391
R25	1	RES 330Ω, 1/4 W, 5%	13 00285
R4, R8, R12, R16, R20, R24	6	RES 100Ω, 1/4 W, 5%	13 00220
C3			
C8	1	CAP 6.8µF, 35V, 20%	10 03306
C2			
C1			
C4, C5, C6, C7, C9, C10, C11, C12	9	CAP .01µF, 100V, 20%, DISC	10 01610
E13	1	IC DEC 7404	19 02686
E14	1	IC DEC 7440	19 05579
E8, E9	2	IC DEC 7400	19 05575
E6, E7	2	IC DEC 0640	19 11469
E10, E11, E16	3	IC DEC 9601	19 09373
E1, E2, E3, E15	4	IC DEC 7474	19 05547
E4, E5	2	IC DEC 8881	19 09705

Note:  
\* See Timing Adjustment Table.

For logic drawing see : 7630070-02

DATE 6-21-72 DATE 4-29-72 DATE 4-27-72	
PLOTTER CONTROL	D CS 7630071-0